

Single Point

BC

Rated Capacity | 3, 5, 6, 12, 15, 30, 60, 100, 150(kg)

Material | Aluminum

사용용도 | Bench, Checker

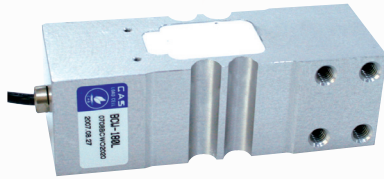


BCW

Rated Capacity | 60, 70, 150, 180, 200(kg)

Material | Aluminum

사용용도 | Bench, Platform

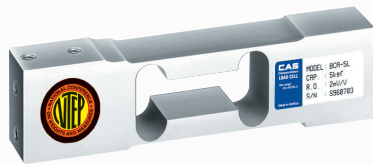


BCA

Rated Capacity | 5, 10, 15, 20, 30, 50, 75, 100(kg)

Material | Aluminum

사용용도 | Bench, Checker



BCM

Rated Capacity | 50, 75, 100, 150, 200, 300, 500, 750(kg)

Material | Aluminum

사용용도 | Bench, Platform

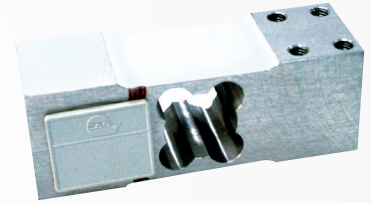


BCO

Rated Capacity | 60, 70, 150, 180, 200(kg)

Material | Aluminum

사용용도 | Bench, Platform

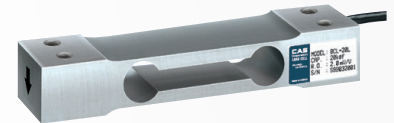


BCL

Rated Capacity | 1, 2, 3, 6, 10, 15, 20, 30, 60, 100, 150, 200(kg)

Material | Aluminum

사용용도 | Bench, Checker

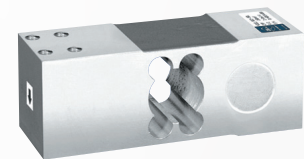


BCD

Rated Capacity | 100, 150, 250, 300, 500(kg)

Material | Aluminum

사용용도 | Bench, Platform



BC-F

Rated Capacity | 300, 600(kg)

Material | Aluminum

사용용도 | Large Bench, Platform

