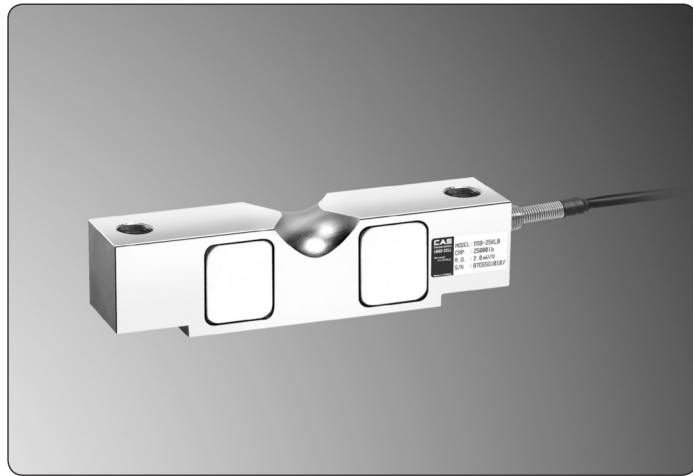


# DSB1

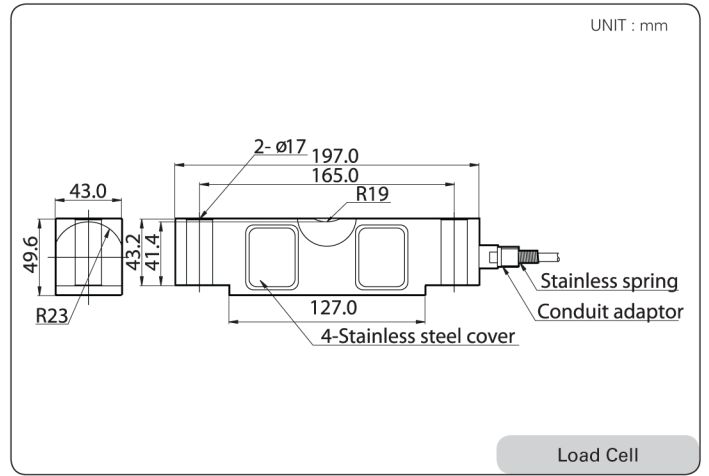
## Truck and Tank Weighing Load Cell



### LOAD CELL



### DIMENSION



Load Cell

### FEATURES

- Nickel plated steel construction
- NTEP III L 10,000M pending (Handbook 44)
- Compatible with other sources
- Designed according to IP67

### ACCESSORY FEATURES

- Easy Load Cell replacement
- Appropriate for tank and hopper application
- Designed for safety
- High resistance against side force
- high durability

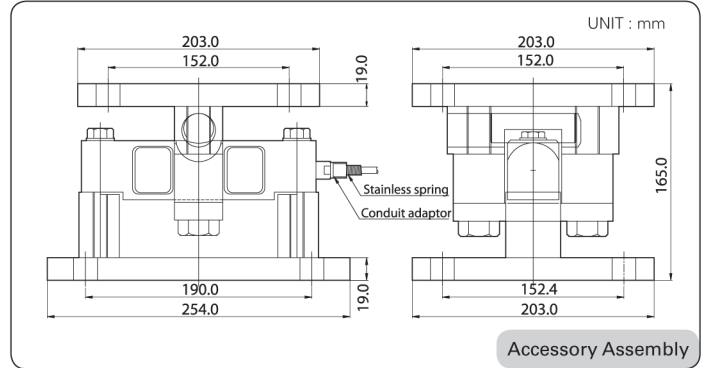
### ACCESSORY OPTION

- DSB1\_TW Accessory(SET)

### MANUAL

- Check the Load Cell level with the surface
- Fix tightly the accessories with the Load Cell

### SPECIFICATION



Accessory Assembly

Capacity		klb	10, 20, 25, 50, 60, 75	
Rated Output		mV / V	3.0 ± 0.0075	
Zero Balance		mV / V	0.0 ± 0.03	
Accuracy Class		-	D3	B10(III L 10,000M)
Non-Linearity		% R.O.	≤ 0.05	≤ 0.03
Hysteresis		% R.O.	≤ 0.05	≤ 0.03
Combined Error		% R.O.	≤ 0.05	≤ 0.03
Repeatability		% R.O.	≤ 0.03	≤ 0.015
Creep for 30min.		% R.O.	≤ 0.05	≤ 0.02
Return for 30min.		% R.O.	≤ 0.05	≤ 0.02
Resolution		-	≤ 1/2000	≤ 1/3000
Division		mV / V	0.0015	0.001
Temperature Effect on	-Zero Value	%/10°C	≤ 0.03	≤ 0.014
	-Output Value	%/10°C	≤ 0.02	≤ 0.011
Excitation	-Recommended	V	10	
	-Maximum	V	15	
Resistance	-Input	Ω	800 ± 40	
	-Output	Ω	700 ± 7	
	-Insulation	MΩ	> 2000	
Compensated Temperature Range		°C	- 10 to + 40	
Operating Temperature Range		°C	- 20 to + 80	
Material & Plate		-	Nickel plated steel	
Cable Specification		-	ø5.4 x 4P x 10M (Urethane)	
Safety Overload		% R.L.	150% R.L.	
Platform Size		mm	No Platform type	