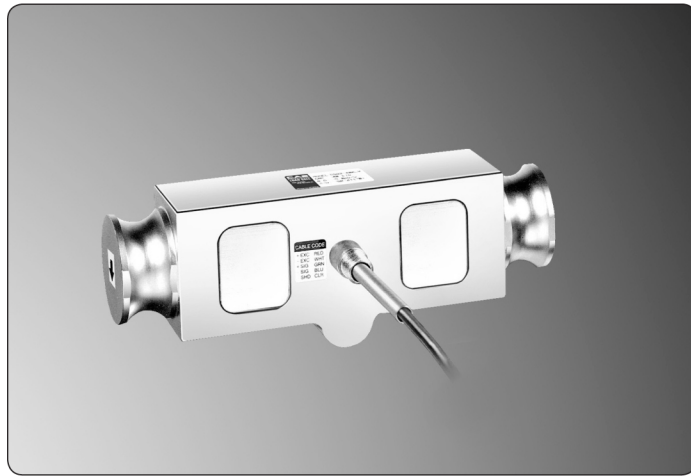


# DSB2

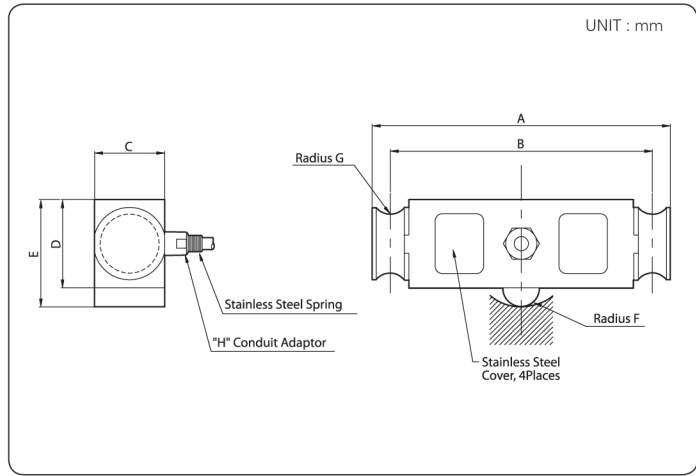
## Truck and Tank Weighing Load Cell



### LOAD CELL



### DIMENSION



### FEATURES

- Double end link beam application
- NTEP IIIIL 10,000M pending (Handbook 44)
- Compatible with other sources
- Nickel plated steel construction
- Designed according to IP67

### ACCESSORY OPTION

- NTEP approved class
- DSB2\_TW accessory

### SPECIFICATION

Capa.	A	B	C	D	E	F	G	H
25klb	209.6	184.2	49.3	62	75.5	12.7	12.7	1/4 - 18NPT
40klb								
75klb	292.1	254	49.3	74.7	88.15	25.4	19.1	1/2 - 14NPT

Capacity		lb	25K, 40K, 75K	
Rated Output		mV / V	3.0 ± 0.0075	
Zero Balance		mV / V	0.0 ± 0.03	
Accuracy Class		-	D3	B10(IIIIL 10,000M)
Non-Linearity		% R.O.	≤ 0.05	≤ 0.03
Hysteresis		% R.O.	≤ 0.05	≤ 0.03
Combined Error		% R.O.	≤ 0.05	≤ 0.03
Repeatability		% R.O.	≤ 0.03	≤ 0.015
Creep for 30min.		% R.O.	≤ 0.05	≤ 0.02
Return for 30min.		% R.O.	≤ 0.05	≤ 0.02
Resolution		-	≤ 1/2000	≤ 1/3000
Division		mV / V	0.0015	0.001
Temperature Effect on	-Zero Value	%/10°C	≤ 0.03	≤ 0.014
	-Output Value	%/10°C	≤ 0.02	≤ 0.011
Excitation	-Recommended	V	10	
	-Maximum	V	15	
Resistance	-Input	Ω	800 ± 40	
	-Output	Ω	700 ± 7	
	-Insulation	MΩ	> 2000	
Compensated Temperature Range		°C	- 10 to + 40	
Operating Temperature Range		°C	- 20 to + 80	
Material & Plate		-	Nickel plated steel	
Cable Specification		-	ø5.4 x 4P x 12M (Urethane)	
Safety Overload		% R.L.	150% R.L.	
Platform Size		mm	No Without Limit	