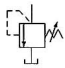
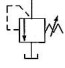
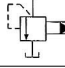
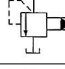
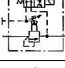

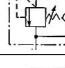
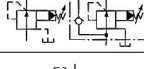
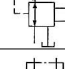



C

PRESSURE CONTROLS

Valve Type	KS Graphic Symbols	Max.oper ating Pressure MPa {kgf/cm ² }	Max. Flow L/min																Page
			1	2	3	5	10	20	30	50	100	200	300	500	1000	2000			
Remote Cont. Relief Valves		25 {255}	01																C-3
Direct Type Relief Valves		21 {214}	02																C-5
Pilot Operated Relief Valves		25 {255}	030610																C-7
Low Noise Type Pilot Relief Valves		25 {255}	0306																C-11
Sol. Cont. Relief Valves		25 {255}	030610																C-14
H Type Press. Cont. Valves		21 {214}	030610																C-23
HC Type Press. Cont. Valves		21 {214}	030610																C-29
Press. Reducing & Check Valves		21 {214}	0306																C-34
Press. Reducing & Relieving Valves		03:14 {143}	03																C-40
Unloading Relief Valves		21 {214}	06																C-43

Hydraulic Fluids

1. Fluid Types

Any type of hydraulic fluid, listed in the table below can be used.

Petroleum based oil	Use fluids equivalent to ISO VG32 or VG46.
Synthetic fluids	Use phosphate ester or polyol ester fluid. When phosphate ester fluid is to be used, prefix "F-" to the model number because a special seal (fluororubber) will be used.
Water containig fluids	Use water - glycol fluid.

Note: For use with hydraulic fluids other than those listed above, please consult your SEWON represestatives in acvance.

2. Recommended Fluid Viscosity and Temperature

Use under conditions where the viscosity and temperature of the hydraulic fluid remain in the ranges indicated in the following table.

Name		Viscosity	Temperature
Remote Control Relief Valves	H Type Presure Control Valves	15~400mm ² /s{cSt}	-15~+70℃
Direct Type Relief Valves	HC Type Pressure Control Valves		
Pilot Operated Relief Valves	Pressure Reducing Valves		
Low Noise Type Pilot Operated Relief	Valves Pressure Reducing and Check Valves		
Solenoid Controlled Relief Valves	Pressure Reducing and Relieving Valves		

* If the valve is provided with a vent ristrictor (ex.: A-BSG-03), the viscosity range should be 15-200cSt (80-900 SSU).

3. Control of Contamination

Due caution must be paid to maintaining control over contamination of the hydraulic fluids which may otherwise lead to breakdowns and shorten the life of the valve. Please maintain the degree of contamination within NAS 1638-Grade 11. Use 25μm or finer line filter.

4. Drain Piping

Drain port must be connected directly to the tank in condition back pressure is lower than the atmospheric pressure. That line pressure can be increased infinitely can be caused a serious accident.

Remote Control Relief Valves

This valve is used as a remote control valve for pilot operated type pressure control valves.

Ratings

Model Numbers		Max. Operating Pres. MPa {kgf/cm ² }	Mass kg	
Threaded Connections	Sub-Plate Mounting		DT type	DG type
DT-01-22	DG-01-22	25 {255}	1.6	1.4

Model Number Designation

D	T	-01	-22
Series Number	Type of Mounting	Valve Size	Design Number
D: Remote Control Relief Valves	T: Threaded Connections G: Sub-Plate Mounting	01	22 (Standard) 2230 (Low Press. Control)

Attachment

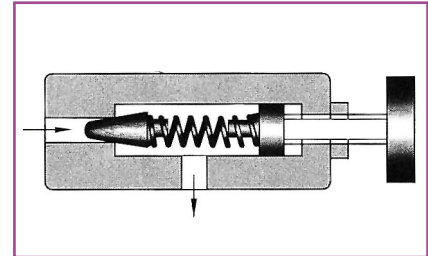
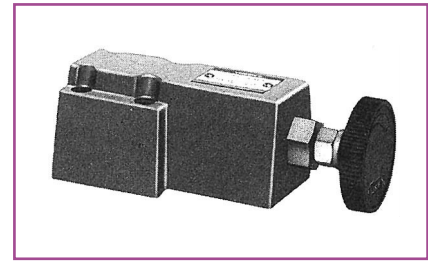
- Mounting bolt

Valve Model Numbers	Socket Head Cap Screw
DG-01	M5 ×45L 4Pcs.

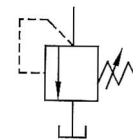
Sub-Plate

Valve Model Numbers	Sub-Plate Model Numbers	Piping Size	Mass kg
DG-01	DGM-02-20	Rc 1/4	0.7

- Sub-plates are available. Specify sub-plate model from the table above. When sub-plate are not used, the mounting surface should have a good machined finish.



KS Graphic Symbol

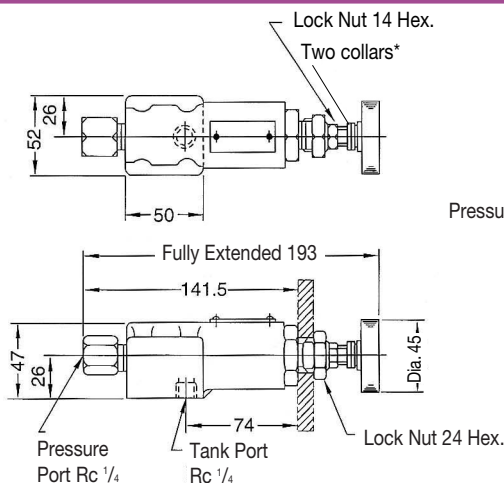


Remote Control Relief Valves

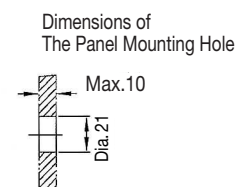
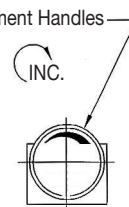
Instructions

- To adjust the pressure, loosen the lock nut and turn the handle slowly clockwise for higher pressures or anti-clockwise for lower pressures.
- After adjustments, do not forget to tighten the lock nut.
- If the internal volume of the vent line is too large, chattering is likely to occur.
- Piping of the tank line should not be connected to any tank line of the other valves, but connected directly to the tank.

DT-01

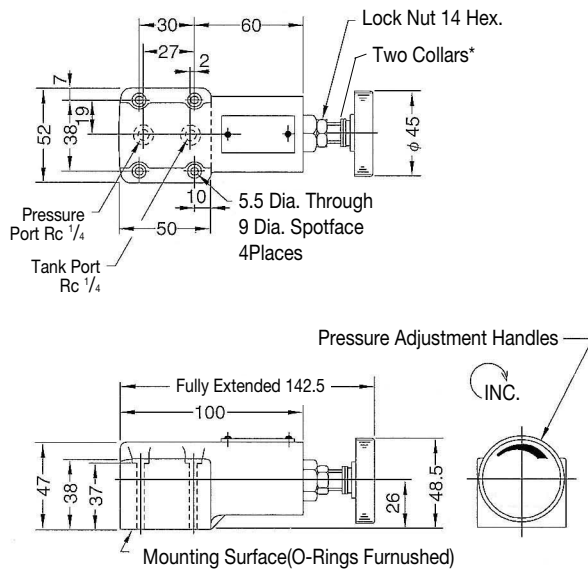


★ Pressure is limited by collars fitted. If a working pressure cannot be attained, remove some collars. One collar is equivalent to 10 Mpa.

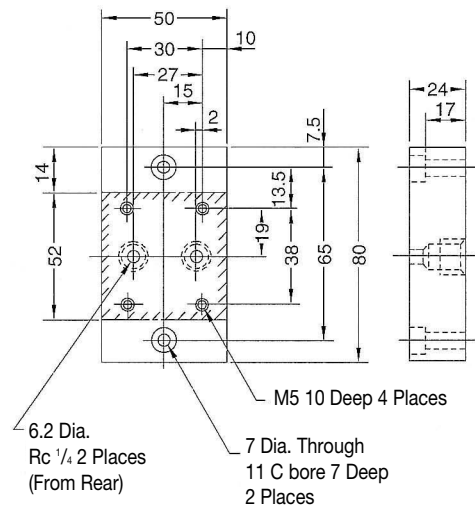


DG-01

★ Pressure is limited by collars fitted. If a working pressure cannot be attained, remove some collars. One collar is equivalent to 10 Mpa. {102kgf/cm²}



Sub-plate: DGM-02

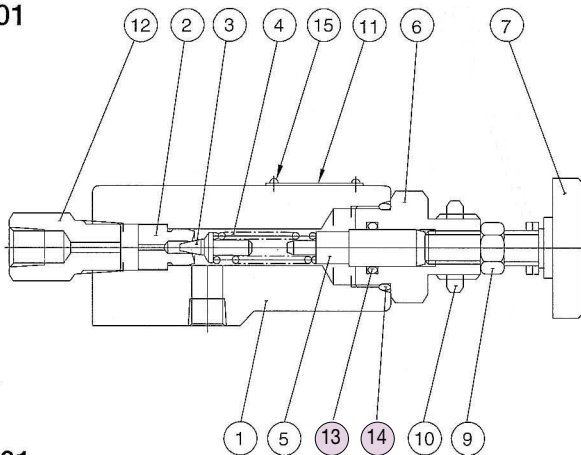


CAUTION

When making replacement of seals, please do it carefully after reading through the relevant instructions in the Operator's Manual.

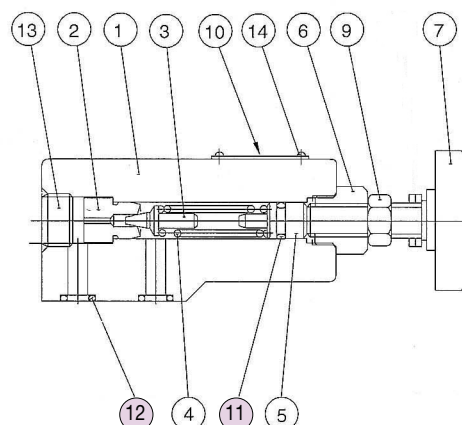
List of Seals

DT-01



Item	Name of Parts	Part Numbers	Qty
13	O-Ring	JIS B 2401 -1A-P12	1
14	O-Ring	JIS B 2401 -1B-P22.4	1

DG-01



Item	Name of Parts	Part Numbers	Qty
11	O-Ring	JIS B 2401 -1A-P9	1
12	O-Ring	JIS B 2401 -1B-P9	2

Direct Type Relief Valves

This valve is used in a hydraulic circuit to prevent damage due to over pressure and to adjust the maximum circuit pressure of small capacity.

Ratings

Model Numbers		Max. Operating Pressure MPa {kgf/cm ² }	Pres. Adj. Range MPa {kgf/cm ² }	Max. Flow l/min	Mass kg	
Threaded Connections	Sub-Plate Mounting				DT type	DG type
DT-02-※-22	DG-02-※-22	21 {214}	★	16	1.5	1.5

★ Refer to the Model Number Designation.

Model Number Designation

D	T	-02	-B	-22
Series Number	Type of Mounting	Valve Size	Pres. Adj. Range	Design Number
D: Direct Type Relief Valves.	T: Threaded Connections	02	B: ★~7 {★~71.4} C: 3.5~14 {35.7~143} H: 7~21 {71.4~214}	22
	G: Sub-Plate Mounting			22

★ Refer to the Minimum Adjustment Pressure Characteristics.

Instructions

- To adjust the pressure, loosen the lock nut and turn the handle slowly clockwise for higher pressures or anti-clockwise for lower pressures. After adjustments, do not forget to tighten the lock nut.
- Piping of the tank line should not be connected any tank line of the other valves, but connected directly to the tank.

Attachment

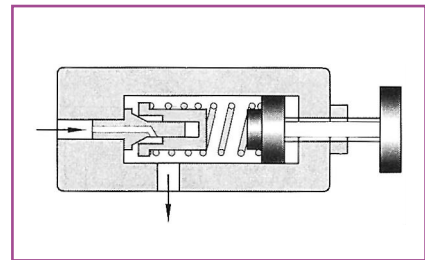
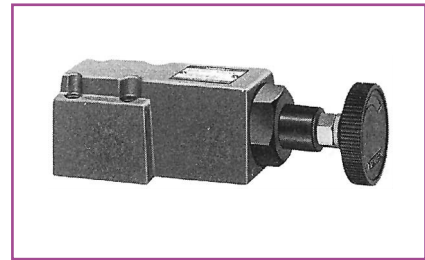
- Mounting bolts

Valves Model Numbers	Socket Head Cap Screw
DG-02	M5 × 45L 4Pcs.

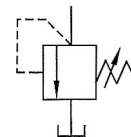
Sub-Plate

Valves Model Numbers	Sub-Plate Model Numbers	Piping Size	Mass kg
DG-02	DGM-02-20	Rc 1/4	0.7

- Sub-plates are available. Specify sub-plate model from the table above. When sub-plates are not used, the mounting surface should have a good machined finish.
- The sub-plates are those for remote control relief valves. For dimensions, see page C-4.

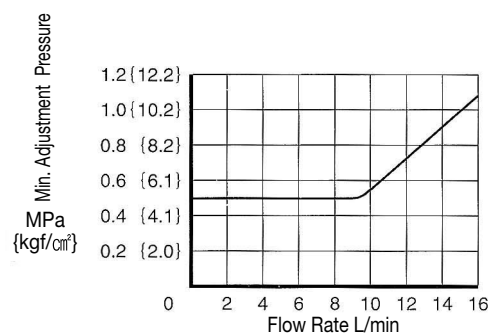


KS Graphic Symbol



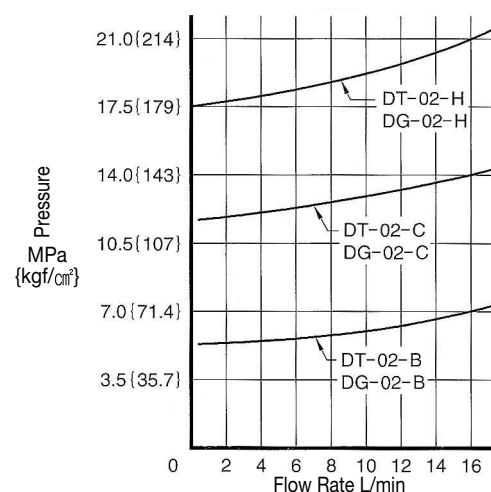
C
Direct Type Relief Valves

Min. Adjustment Pressure

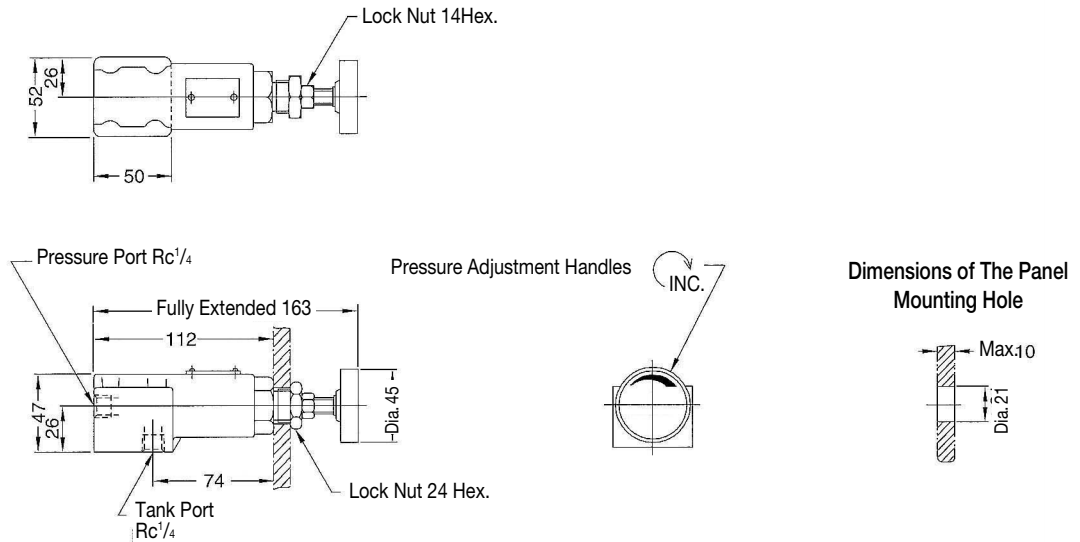


Nominal Override Characteristics

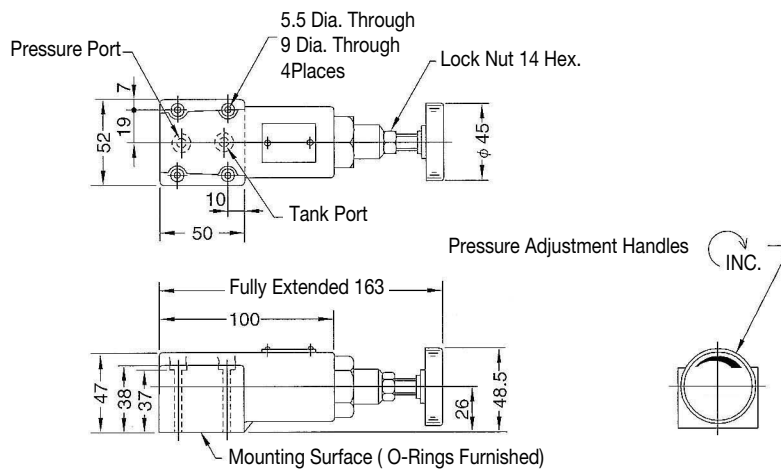
Hydraulic Fluid : Viscosity 35 cSt
Specific Gravity: 0.850



DT-02



DG-02

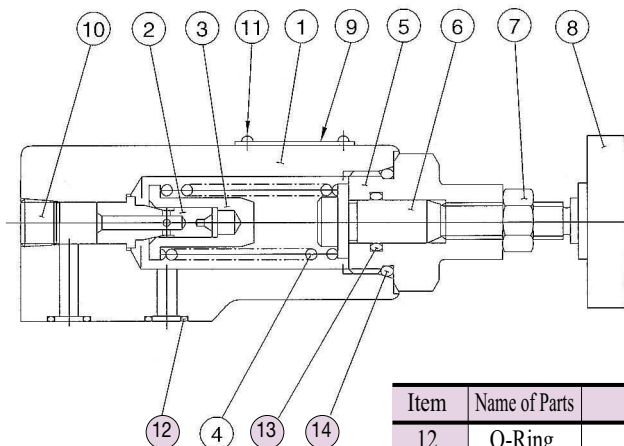


For dimensions of the valve mounting surface, see the dimensional drawing (C-4) of the sub-plate used together.

CAUTION

When making replacement of seals, please do it carefully after reading through the relevant instructions in the Operator's Manual.

List of Seals



Item	Name of Parts	Part Numbers	Qty	Remarks
12	O-Ring	JIS B 2401-1B-P9	2	Use only for DG-02
13	O-Ring	JIS B 2401-1A-P12	1	
14	O-Ring	JIS B 2401-1B-P22.4	1	