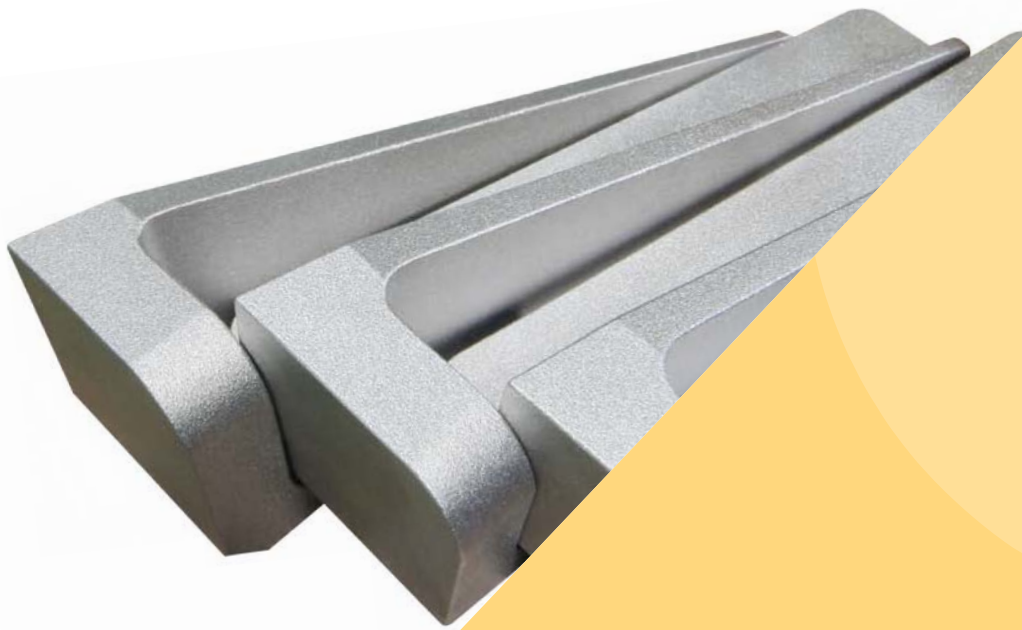


# Shot Peening

COTEC has various surface treatment technologies and the company concentrates on products development and quality control to develop various surface treatment items



## Production items and applications

Department / Material		Aircraft, Defense industry, Atomic power / Ti, STS	
Usage		Increases the fatigue life of products and inhibit stress corrosion crack	
Applied specifications	AMS 2430 BAC 5730 API 02-02-004 ABP 1-2028/2353 ABP 1-2029 ABP 1-2026 PCS 2300 NE 40-072 KDS85MP0132 TPS 1-434	Almen strip : A, N type	
		Shot : ASH 230 (AMS2431/2), AWCH 32 (AMS2431/8)	
		Intensity : 0.003A~0.0021A	
Acceptance		External	BOEING, AIRBUS, BOMBARDIER, NADCAP, MBD, LOCKHEED MARTIN
		Internal	ADD, KAI, KAL

# Shot Peening

Capable of coating complex parts

## COTEC Plating Process



## Our technologies and their applications

### Sacheon plant

Lance peening No.1 equipment : 2,000(500) × 2,400(500) × 3,950(1,600) mm  
(Applicable length 300 mm)

Lance peening No.2 equipment : 2,130(400) × 9,200(8,000) × 2,800(1,200) mm  
(Applicable length 300 mm)

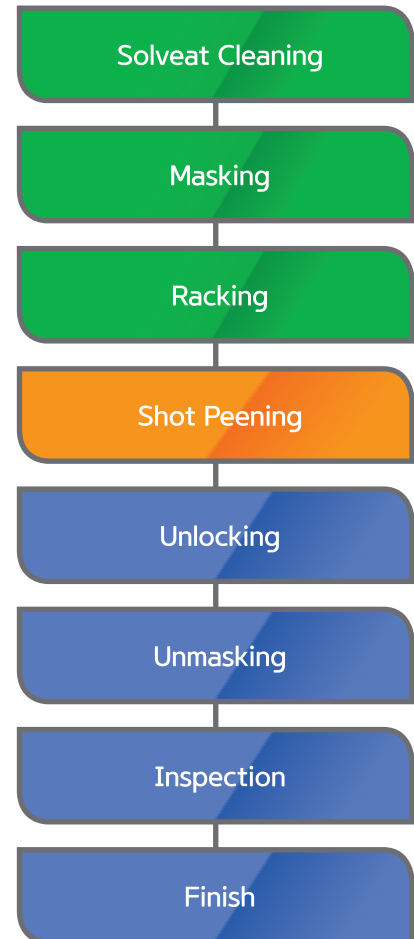
Lance peening No.3 equipment : 2,100(300) × 8,000(4,000) × 2,800(900) mm  
(Applicable length 1,000 mm)

Portable peening equipment : 1,800 × 2,000 × 2,500

Manual peening equipment : 1,500(800) × 1,500(500) × 2,000(500) mm



## Process



The above plating process is property of COTEC Corporation. Unauthorized copy or use of the contents are prohibited. Please contact us for further information.