



DASAN Aerial work platforms

SKYMAN Zero tail type



If you give priority to Safety & Efficiency of high aerial works, the answer is absolutely DASAN 'SKYMAN' series - Aerial work platforms.



When choosing the optimal Aerial work platforms,
DASAN series have priorities before any other brands.



DS 260 QT

CRANE with bucket on 2.5 ton of Cuty Highsuper Short-Wheelbase safely performs various high aerial works. Now, New-standard in the combined downtown works.



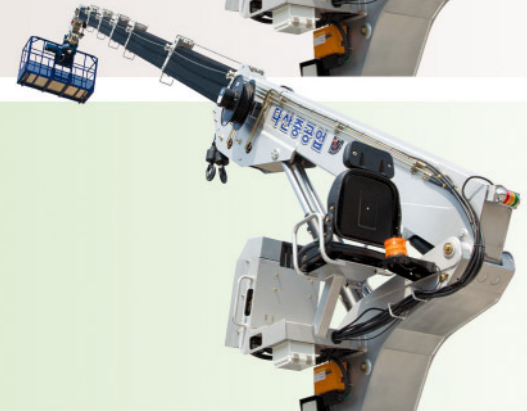
DS 280 ES

Aerial work platform on 3.5 ton of Super Short-Wheelbase has been upgraded through the consistent improvement for years. the quality & function are recognized as the best model among the same classes.



DS 300 EL

Aerial work platform on 3.5 ton of Super Cap Gold Long-Wheelbase is largely recommended as the most advanced & ideal model with high efficiency & maximum working-height.



DASAN 'SKYMAN' series - Aerial work platforms.

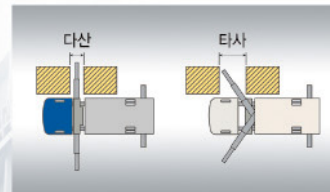
DS 260 QT | DS 280 ES | DS 300 EL

Maximum lifting height, Maintenancing stability and Safety.
 Appropriate for various working conditions - 'SKYMAN series'
 Ultimate Product of DASAN philosophy - DASAN compact Aerial work platform series.
 Now, See DASAN high-quality wide selection with your own eyes.



Zero tail type Aerial work platforms for downtown works

Minimized rear-radius rotation allows efficient high aerial works in the combined alley of the downtown.



STABLE & EFFICIENT OUTRIGGER

Carries out efficient works by extension outriggers under working conditions with many obstacles as well as in the combined alley of the downtown. Especially, 2-stage main wide-range outriggers perform the nation's largest extension length, which is organized as horizontal extension system. it prevents the outrigger-lowering due to self-weight.



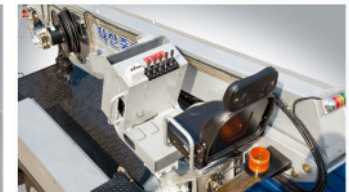
Easy removable bucket application

Electric motor-driven type bucket makes it easy to remove bucket, which makes it faster to convert from winch operation to bucket one. Especially, newly-developed intergrated Bearing reduction gear has little tolerance, which allows safe operation and reduces shocks due to built-in circuit for soft Start & Stop in high aerial works.



High -performance remote control (DANFOSS.MCV)

STABILITY & CONVENIENCE have been highly strengthened by application of HETRONIC-German global brand. WORK EFFICENCY & SAVING HOURS have been accomplished by user's direct-confirmation on working site.



Convenient & comfortable Top seat (DS280ES · DS300EL)

For efficient operation, bucket spinning pedal & excel are installed in top seat, which highly increased the convenience of working conditions.



Rear outrigger for stable operation on sloping place

Vertical extension range of rear outrigger is maximized for stable operation at the sloping places and Cross-axis wide-range pedal keeps the durable support on rough ground.



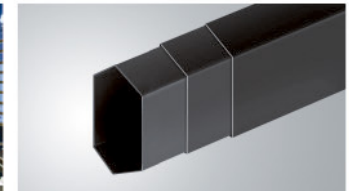
High pressure Filter

The lifetime is highly increased by using High pressure Filter for Super-fine hydraulic components. Indicator on the upper part automatically shows its changing time.



High-efficiency Oil cooler

Oil cooler installed even at small-class models (such as DS260QT, DS280ES and DS300) keeps ideal oil temperature. it leads to lifetime increase & durability of Hydraulic equipments



Strong hexagonal structure

Hexagonal boom optimally designed by FEM is the lighter, stronger, it sharply reduces the noise & the shivering between booms and leads to accurate & safe operation.

Stable BOOM SYSTEM

Use 6 booms with 2 cylinders compared to other brands with 1 cylinder only. The minimized tension at extended wire reduces the possibility of unexpected accidents from wire & cylinder damage. Horizontal folding-capacity is superior to other models with 1 cylinder.

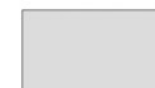


		DS 260 QT	DS 280 ES	DS 300 EL
Winch working capacity		1000 kgf (Single strand)	1000 kgf (Single strand)	1000 kgf (Single strand)
Maximum working radius		19.85 m	21.5 m	23.6 m
Maximum working height	Winch	22.7 m	24.4 m	26.5 m
	Bucket	24.3 m	26.3 m	28.4 m
Neutral flow		40 ℓ / min	40 ℓ / min	40 ℓ / min
Oil tank capacity		55 ℓ	75 ℓ	75 ℓ
Extension/folding Speed		16.7 m / 42 sec	18 m / 45 sec	19 m / 48 sec
Up / down Speed		79 ° ~ -13 ° / 36 sec	79 ° ~ -13 ° / 36 sec	79 ° ~ -13 ° / 36 sec
Rotation angle		360 ° (360-degree revolution)	360 ° (360-degree revolution)	360 ° (360-degree revolution)
Rotation speed		1 rpm	1 rpm	1 rpm
Main winch	Wire rope	φ 8 X 55 m, 19 X 7 (Rotation-resistant wire rope)	φ 8 X 60 m, 19 X 7 (Rotation-resistant wire rope)	φ 8 X 65 m, 19 X 7 (Rotation-resistant wire rope)
	Wire speed	42 m / min (Outside speed)	42 m / min (Outside speed)	42 m / min (Outside speed)
Outrigger	Main : Horizontal Vertical Automatic Extension (5.7m)		Main : Horizontal Vertical Automatic Extension(6.2m)	
	Rear (H) : Vertical automatic Extension (3.9m)		Rear (H) : Vertical automatic Extension (4.0m)	
			Front (A) : Vertical automatic Extension (1.4m)	
Safety device	Safety valve (relief valve)			
	Overcenter valve for preventing dropping of boom			
	Double overcenter valve for preventing extract, entrance of booms			
	Winch automatic brake for preventing dropping of hook.			
	Double pilot check valve for preventing extract, entrance of jack cylinder			
	Safety hook for preventing the breakaway from force			
	Fuse valve preparing hose breakage.			
	Safety approval, emergency stop, emergency pump			
	Upper & lower interlock / 3 color light (buzzer attached)			
	Preventive device from being overthrown.			
	Alarm & preventive device of being overwinded			
	Bucket shock prevention device			
	Main winch / sub-winch			
	2-stage main wide range outrigger (horizontal / vertical)			
Basic specification	Front outrigger (Vertical auto)			
	Rear outrigger (horizontal / vertical)			
	Remote control, Working light, Diverter valve, OVEM tool			
	Wire reels, Automatic horizontal device, Inverter (6kw)			
Vehicles		Hyundai 2.5 ton - Short Wheelbase	Hyundai 3.5 ton - Short Wheelbase	Hyundai 2.5 ton - Long Wheelbase

Product Color



Metallic Blue



Metallic Silver