

BLOCKAGE & BUILD-UP REMOVAL

AIRCHOC® WIRELESS - MACSYS WIRELESS



INNOVATIVE PROCESSES FOR BULK HANDLING

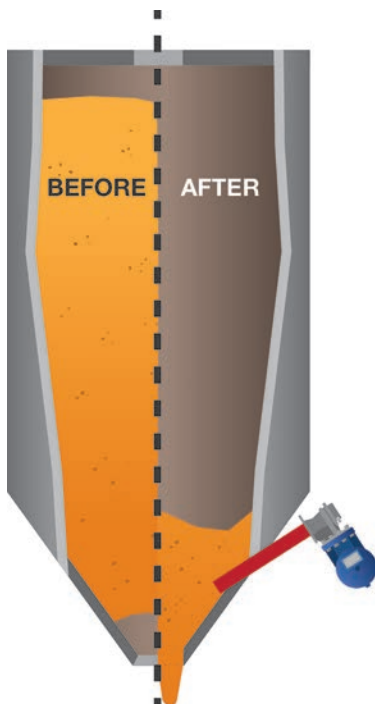
OUR SOLUTIONS

Powerful and innovative solutions for eliminating clogging and build-up.

We offer preventive solutions to enable you to optimise productivity and help you to recover all your storage capacity.

IN USE AT

- Cement plants
- Steel industry
- Foundries
- Thermal power plants
- Cleaning companies
- Glass factories
- Mines and quarries
- Limeworks
- Coke works
- Incineration plants
- Mills
- Food industry
- Petrochemicals
- Chemicals
- (...)



ADVANTAGES

- **Impact:** Aerodynamics of the head / Ratio between the volume of the tank and the diameter of the head output
- **Safety:** No blast with air pressure drop
- **Quality:** Fully galvanized tank / Cast iron head / Extended lifetime
- **Maintenance:** Direct easy access to the mechanism
- **Reliability:** Protected quick exhaust valve / Self-aligning piston

RELATED SERVICES

- Visits & technical recommendations (dimensioning & positioning)
- Supply of the installation drawing
- We offer complete installation of our equipment if needed
- Up to 3-year warranty
- In-house & external training (STANDARD INDUSTRIE training institute: IFSI - No. 31 59 05660 59)
- After-sales service & maintenance contract
- Standards compliance

OPTIONS

- **Stainless steel chamfer piston:** Increased lifespan and aggressive atmospheres proof (chemicals, incineration, cement works)
- **Pneumatic distributor:** Activates AIRCHOC®/MACSYS blasts pneumatically by positive surge

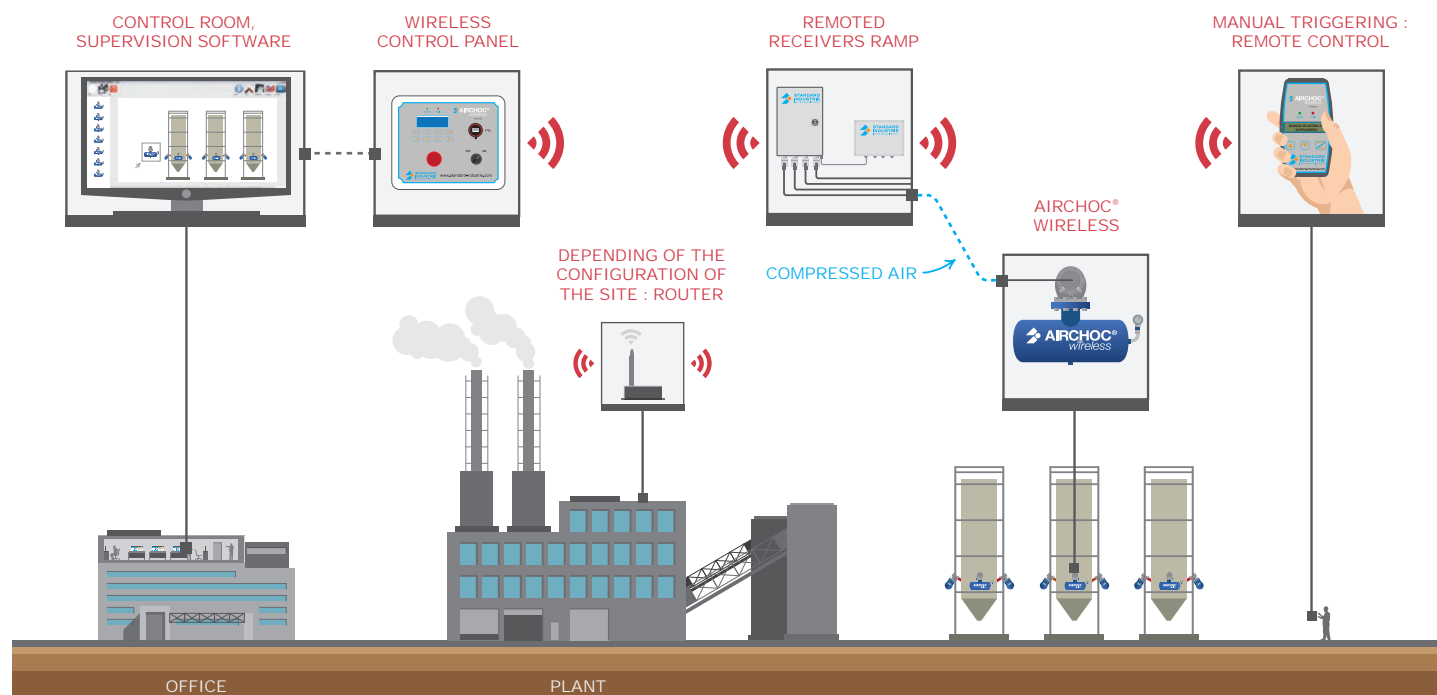
ACCESSORIES

- **Deflectors:** Direct the air flows towards sensitive clogging zones - Steel or refractory stainless steel version
- **Insulation device:** Secured maintenance operations: high temperature, aggressive products, back flow risk
- **Safety device:** Safe use AIRCHOC®/MACSYS (pressure gauge, pressure relief valve, shut-off valve etc.)


**40 YEARS
OF EXPERTISE
AT YOUR SERVICE**

THINK DIFFERENT, THINK **WIRELESS** !

LONG DISTANCE TRANSMISSION AND COMMAND POSSIBLE VIA YOUR CONTROLLER



YOUR ANSWER FOR BLOCKAGE & BUILD-UP REMOVAL: **AIRCHOC® WIRELESS**

- **AIRCHOC®** acts directly on the product
- **Compressed air** from **4** to **400 L** is instantly released through a suitable outlet port
- **25** to **300mm** nominal outlet diameter
- 4 versions:
 - **Standard**
 - **High temperature**
 - **ATEX Zone 20** 
 - **Food-grade stainless steel**
- More than **50,000 AIRCHOC® installations** in more than **90 countries**



SOLUTION FOR SECURING AREAS WITH DIFFICULT ACCESS: **MACSYS WIRELESS**

- Number of heads **2** to **8**
- Nominal outlet diameter of **100** to **150 mm**
- Tank capacity of **200 L**
- **Reinforced metal** or **rubber** flexible tubes
- 2 configurations available:
 - **Standard**
 - **High temperature**



AIRCHOC® WIRELESS - MACSYS WIRELESS



CHROME - Heat exchanger



BIOMASS - Boiler



LIME - Silo and extraction to conveyor belt



SAND - Storage hoppers

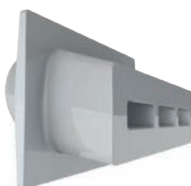
ACCESSORIES AND SPARE PARTS



Piston



Deflectors



Guillotine isolator



Blowpipe

AIRCHOC® WIRELESS - MACSYS WIRELESS



CONCRETE PLANT - Flat bottom silo



QUARRY - tunnel under stock pile



CEMENT - Feeding chute



CONCRETE PLANT - Silo



CONTROL ROOM - Monitoring software



CEMENT - Kiln inlet

CONTACT US !

11 BRANCHES & REPRESENTATIVES AROUND THE WORLD

