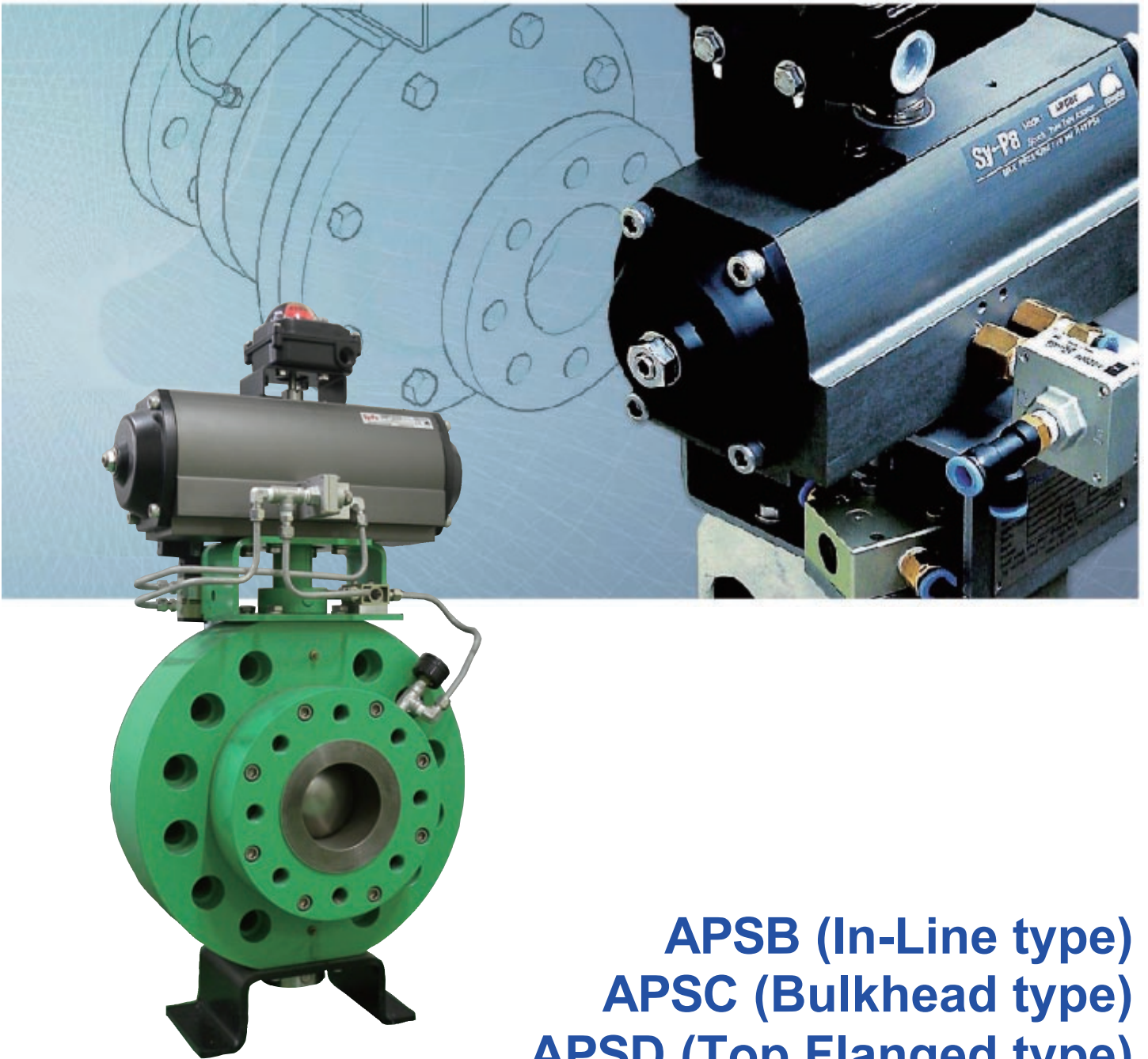


Air-Plus[®]

Inflatable Seat Valve

Dome Type



APSB (In-Line type)

APSC (Bulkhead type)

APSD (Top Flanged type)

APSE (Bottom Flanged type)

INTRODUCTION

Air-Plus Dome type valve is a high performance special valve and is used all over the world in Material Handling Systems in a wide range of industries. **Air-Plus** Dome type valves are capable of handling powdery and granular materials like flyash, bottom ash, boiler bed sand and limestone. The **Air-Plus** Dome type valve has a simple construction and automatically inflating sealing mechanism which operates with compressed air ensuring minimized wearing. The **Air-Plus** Dome type valve closes also through the material, opening the material flow only a quarter turn from fully closed to fully open. The design of **Air-Plus** Dome type valve makes it extremely reliable and easy to maintain, providing long maintenance intervals.

PERFORMANCE FEATURES

- Simple and reliable construction
- Longer valve life
- Minimal seat wear
- Ultra-low torque requirements
- Lower actuator costs
- Full opening for material flow
- More seal contact area
- Proven excellent for abrasive and dry solids
- Shaft wiper seals
- Low maintenance

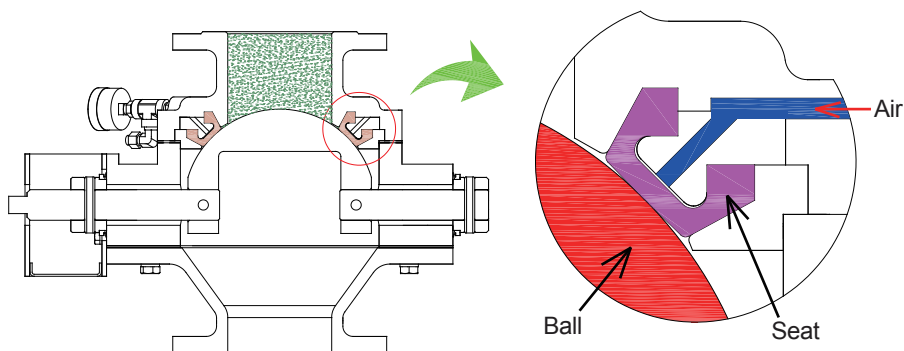
MATERIALS HANDLED

Powders, Granules, Chemicals, Minerals, Cohesive, Abrasive, Hazardous, Toxic, Friable, Detergents

PRINCIPLE OF OPERATION

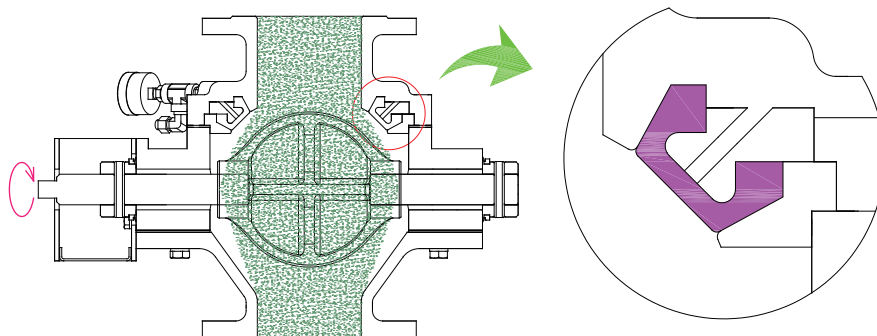
INFLATED SEAT

The seat deflates during open and close, therefore avoiding contact with the ball and eliminating wear.



DEFLATED SEAT

The seat inflates only when the ball is closed. Providing more sealing surface and an even pressure distribution against the ball.

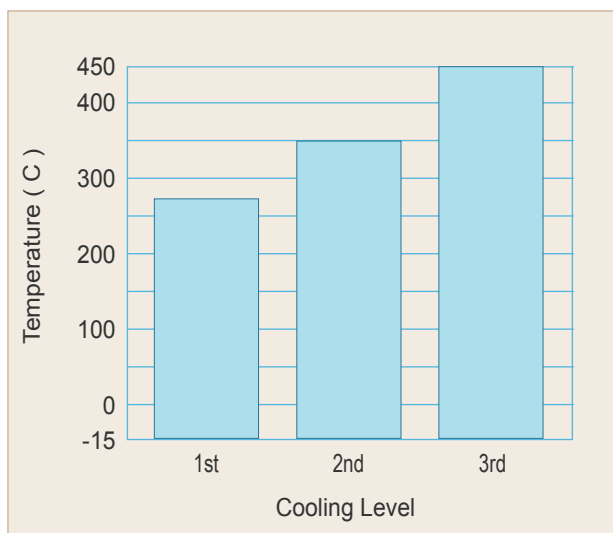


• SEAT ELASTOMER OPTIONS

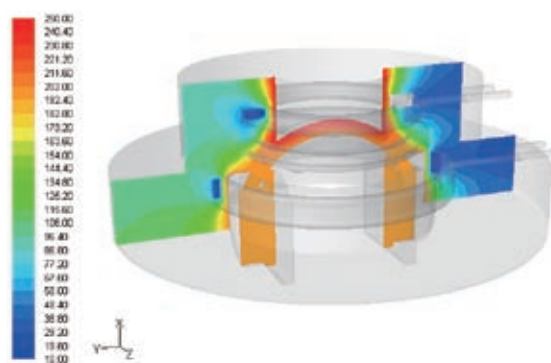
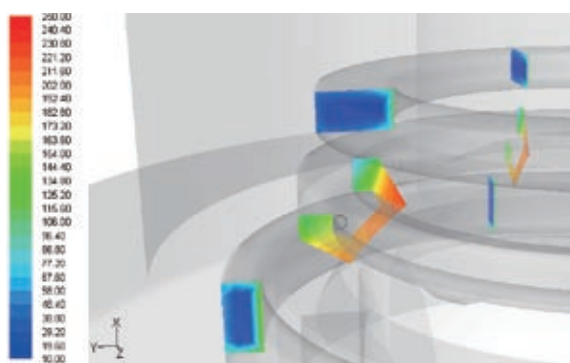
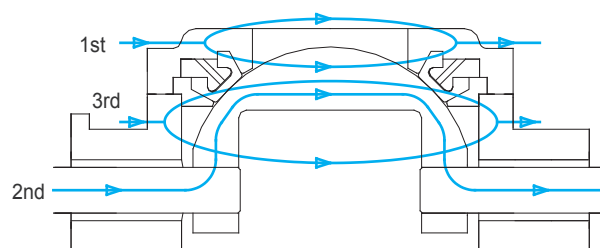
Symbol	Common Name	Generally Applied To
NBR	Buna-N / Nitrile	Ozone Ketones, Esters, Aldehydes, Luboil, Nitro Hydrocarbons
EPDM	Nordel / Royalene	Mineral Oils, Solvents, Aromatic Hydrocarbons
SI	Silicone Rubber	Sodium Hydroxide, Oils, Concentrated Acids, Solvents
FKM FPM	Viton / Flourel	Solvents, Ketones, Nitro Containing, Compounds, CH Products Chemicals



• WATER COOLED OPTIONS



- 2nd : with 1st cooled options
- 3rd : with 1st and 2nd cooled options

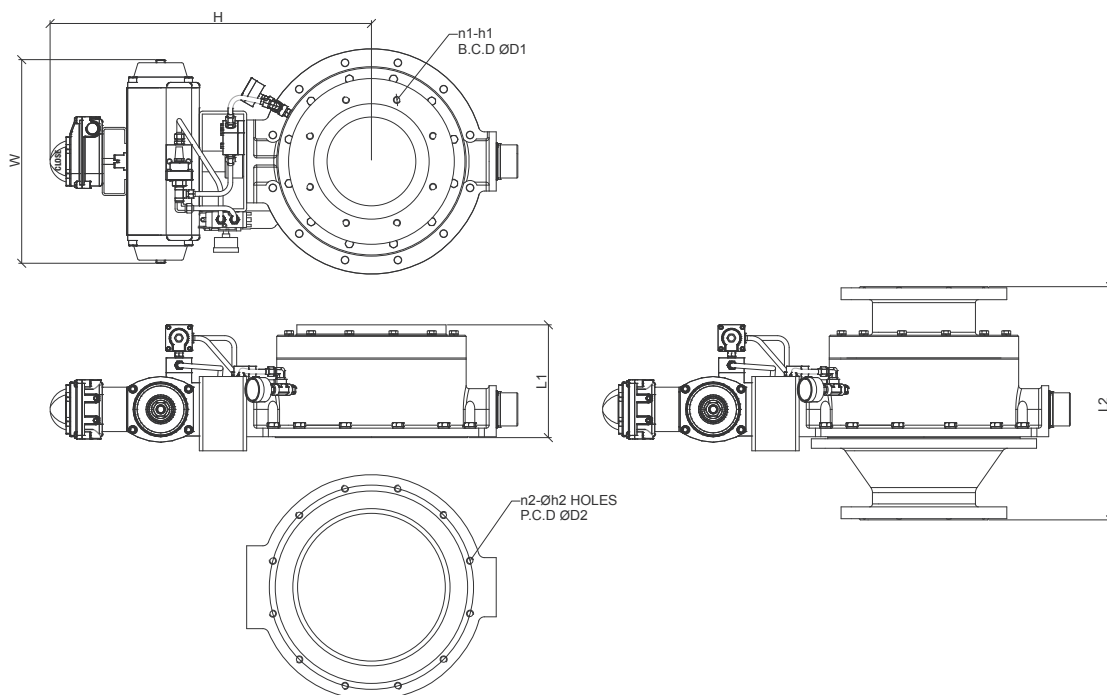


• INTERNAL COATED OPTIONS

- TUNGSTEN-CARBIDE HARD COATING
- NICKEL-CHROME COATING
- TEFLON COATING
- EPOXY RESIN COATING



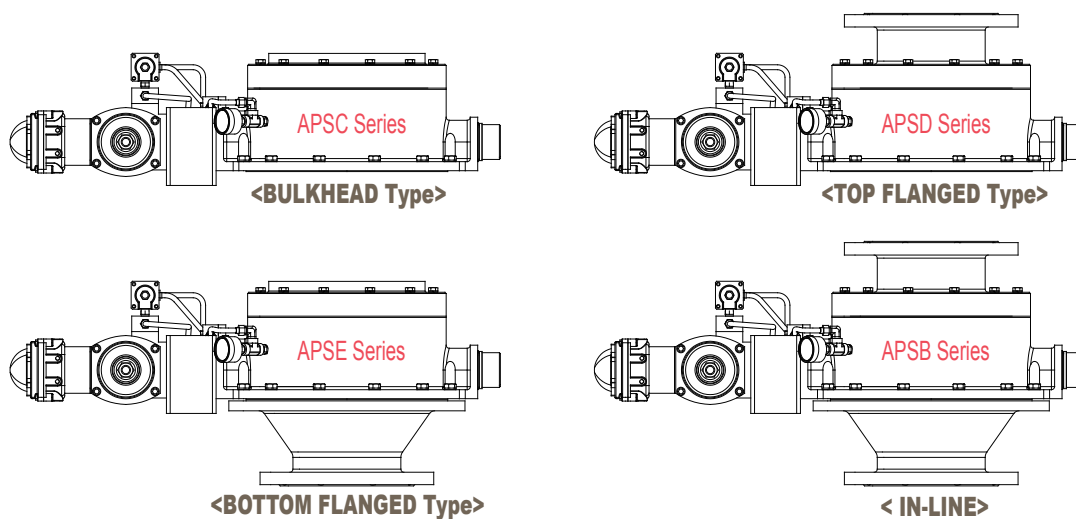
DIMENSIONS

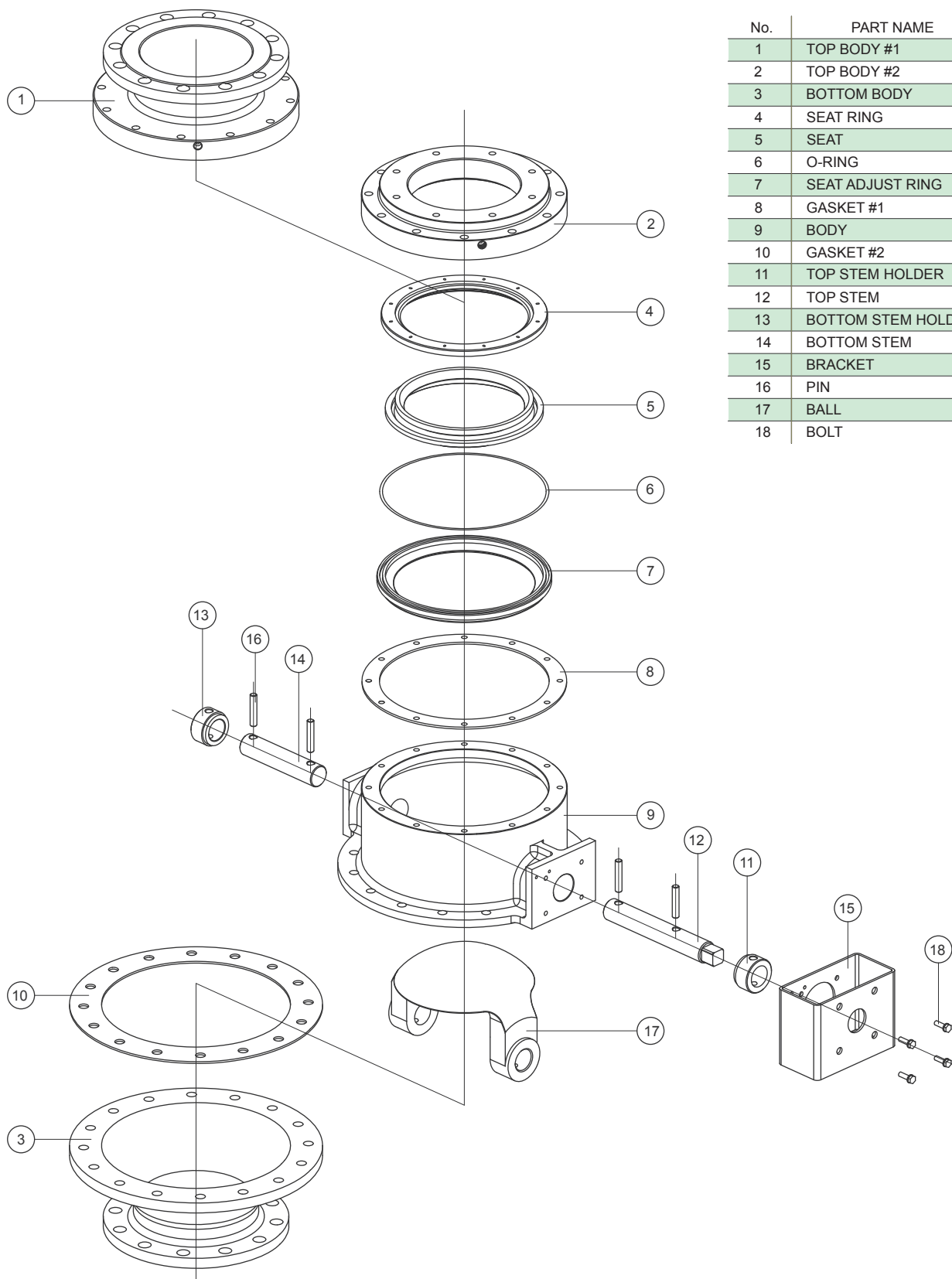


(Units : mm)

Inch	2	2-1/2	3	4	5	6	8	10	12
mm	50	65	80	100	125	150	200	250	300
H	408	432	457	483	502	530	613	682	787
L1	107	130	137	146	189	189	225	264	306
L2	212	270	270	317	422	422	477	521	565
W	244	282	282	282	282	366	366	450	735
ØD1	96	116	126	151	182	212	261	311	380
n1-h1	8-M8	8-M8	8-M8	8-M10	8-M10	8-M12	8-M12	8-M16	8-M16
ØD2	144	187	240	275	360	435	400	490	590
n2-h2	8-Ø9	8-Ø9	8-Ø11	12-Ø14	12-Ø14	12-Ø14	12-Ø18	12-Ø18	12-Ø18
Weight(SB)	21	40	46	65	86	93	128	267	541
Weight(SC)	16	29	34	48	63	69	94	196	396

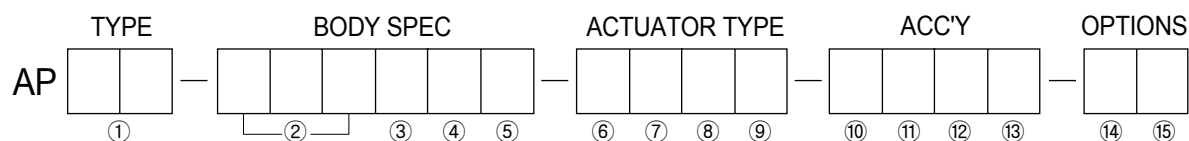
VALVE CONFIGURATIONS





No.	PART NAME
1	TOP BODY #1
2	TOP BODY #2
3	BOTTOM BODY
4	SEAT RING
5	SEAT
6	O-RING
7	SEAT ADJUST RING
8	GASKET #1
9	BODY
10	GASKET #2
11	TOP STEM HOLDER
12	TOP STEM
13	BOTTOM STEM HOLDER
14	BOTTOM STEM
15	BRACKET
16	PIN
17	BALL
18	BOLT

ORDERING INFORMATION



① Valve Type	SB SC SD SE	IN-LINE Type BULKHEAD Type TOP FLANGED Type BOTTOM FLANGED Type
--------------	----------------------	---

② Size	SIZE (mm)
--------	-----------

③ Body Mat'l	C D E F K G H	A395 A216-WCB A351-CF8 A351-CF8M A351-CF3M MONEL HASTELLOY B or C
--------------	---------------------------------	---

④ Connection	1 2 9	RF(IN-LINE) FF (IN-LINE) BULKHEAD
--------------	-------------	---

⑤ Rating	1 2 3 4 5 6 7 8 9 0	JIS 10K JIS 20K JIS 30K ANSI 150# ANSI 300# ANSI 600# DIN10 DIN16 DIN 25 OTHERS
----------	--	--

⑥ Operating	L G C P H E O	LEVER GEAR PNEUMATIC PISTON HYDRAULIC ELECTRIC NONE
-------------	---------------------------------	---

⑦ Manual H/Wheel	1 2 3 0	LEVER TYPE SIDE HANDWHEEL DECLUTCHABLE NONE
------------------	------------------	--

⑧ Fail Position	1 2 3	LAST CLOSE OPEN
-----------------	-------------	-----------------------

⑨ Action Type	1 2 3	ON-OFF CONTROL 2-STAGE ACTION
---------------	-------------	-------------------------------------

⑩ Air Set	1 2 3 4 0	FILTER + REGULATOR F + R + LUBRICATOR F + R (LOW TEMP) SPECIAL TYPE NONE
(ELECTRIC)	5 6	1PH 3PH

⑪ Solenoid	1 2 3 4 5 0	3WAY (STANDARD) 5WAY (STANDARD) 3WAY (DOUBLE COIL) 5WAY (DOUBLE COIL) SPECIAL TYPE NONE
(ELECTRIC)	6 7 8 9	110V/60Hz 220V/60Hz 380V/60Hz 440V/60Hz

⑫ Limit s/w	1 2 3 4 5 0	STANDARD STANDARD BOX TYPE PROXIMITY SENSORS DPDT TYPE SPECIAL TYPE NONE
-------------	----------------------------	---

⑬ Enclosure	1 2	WEA-PROOF EX-PROOF
-------------	--------	-----------------------

⑭ Options (Surface Coating)	1 2 3 4 5	TUNGSTEN CARBIDE NICKEL CHROME PTFE EPOXY RESIN NONE
--------------------------------	-----------------------	--

⑮ Options (Water Cooling)	1 2 3 4	1st WATER COOLING 2nd WATER COOLING 3rd WATER COOLING NONE
------------------------------	------------------	---

Example: The above designates a 6" ANSI Class 150 bulkhead design valve with stainless steel body, stainless steel ball (nickel-chrome coating), pneumatic operation, explosion proof.

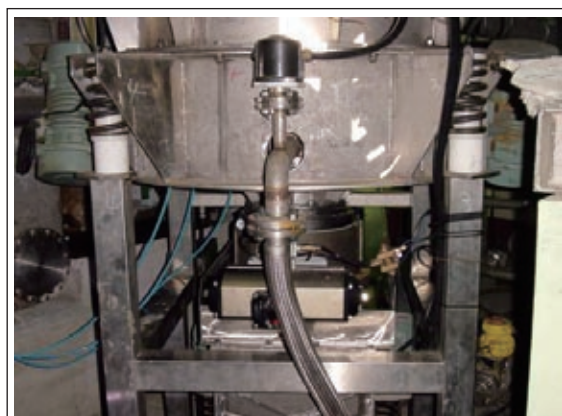
APSC-150E94-C011-1222-24



• Conveying Detergent Granules Process



• Conveying Coal Powder for Manufacture of Cement



• Conveying Ag(Silver) Manufacture Process



• Conveying ABS Resin Process



• CVD (Continuous Vacuum Dryer)



• Conveying PAC(Powdered Activated Carbon) Process



• Coke Oven Gas, Lindz Donawitz Gas Recovery Process



The specifications are subject to change without notice. Please consult us for the latest specifications.

363-19, Nusan-li, Yangchon-myeon, Gimpo-city, Gyeonggi-do, Korea

Tel : +82-31-996-4133 Fax : +82-31-996-4134

<http://www.dongjooAP.com> E-mail : dongjooAP@dongjooAP.com



dongjooAP