

desco drill rig

Desco Inc.(HQ/Manufacturer)

HEAD OFFICE: 1240-1, Ok-Dong, Gwangsan, Gwangju, Korea

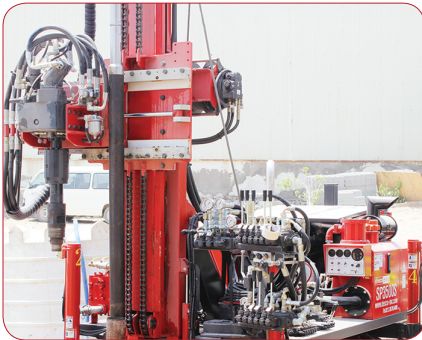
TEL : 82.62.952.4564 / FAX : 82.62.953.1593

EXPORT DIVISION

2607 jidong, Lottecastle, 76, Soongin-Dong, Jongno-Gu, Seoul, Korea

TEL : 82-2-3670 6400 / FAX : 82-2-3670 6399

E-mail : desco@desco-inc.com



SP3500S

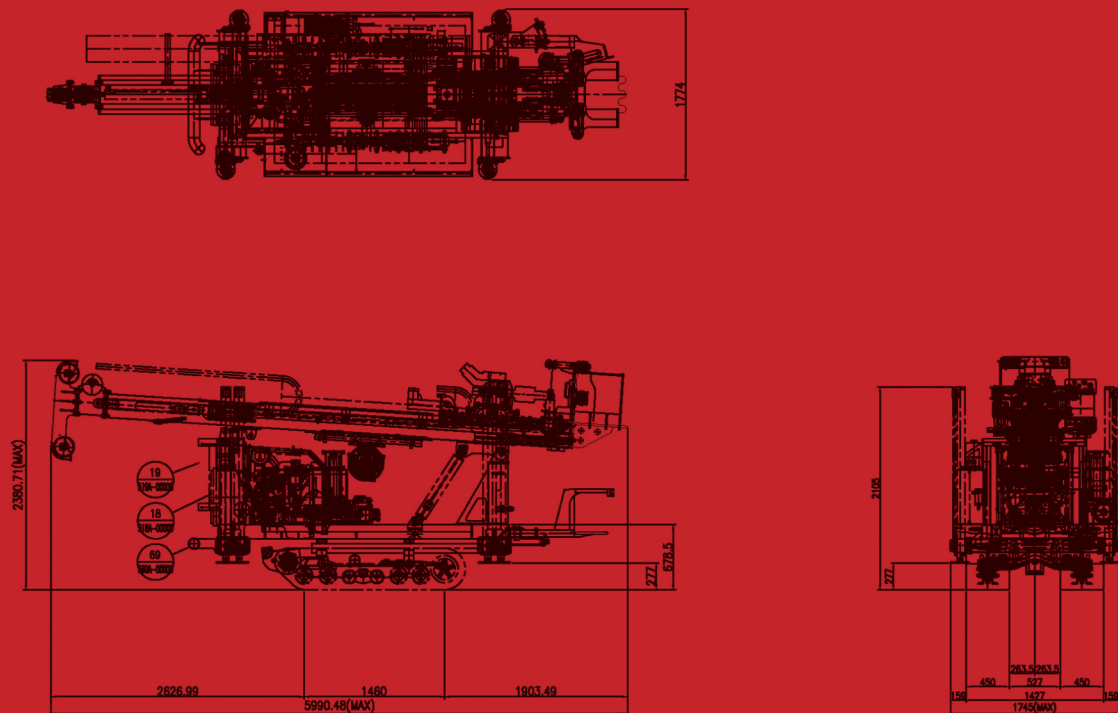
Exploration Drilling Equipment



SP3500S (Desco's smallest model)

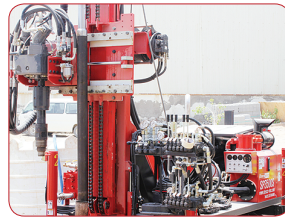
As one of the most compact drills upto NQ-300M depth for exploration diamond drilling, SP3500S surface coring drill is an advanced addition to the SP-S series featuring a telescopic mast. SP3500S is capable of both wireline and conventional coring, as well as DTH, rotary drilling methods with pullback capacity of 10 ton and a torque can be increased. Compactable size enables drillers to easily operate & manage in working place. SP3500S can also include a advanced rod management system that ensures safe and efficient operation.

- * SP3500S for exploration diamond drilling
- * Design for drilling up to NQ 300M
- * Diamond drilling methods (Main)
- * Wireline system
- * Percussion & rotary drilling methods (Additional)
- * Foot clamping system
- * All instrument & control levers are concentrated.
- * Mounted full package on drill rig
- * Self-loading system
- * Installed major hyd. Parts so easy to find spare parts in the market
- * Options - inverter, pre-heating system, wireless remote control and so on



The design & dimension can be changed as drill rig's specification

If you want the kind of drill rigs,
DESCO INC. is at your solution and service.



desco drill rig

TECHNICAL SPECIFICATION

Top head rotation

Rotation torque
Rotation speed
Rotation speed & torque can be controlled

Two speed motors

200kg.M (low) / 40kg.M (high)
0 ~ 120 rpm (low) / 0 ~ 1300 (high)

Feed System

Feed system type
Feed hydraulic cylinder
Feed stroke
Pull-back force
Down force

Variable Speed Hydraulic Cylinder
90mm*55mm*1800mm
3.8M (Drill Pipe - Std. 3.0M)
8ton
3ton

Dimension & Weight

Net weight
Width
Length (mast folded / unfolded)
Height (mast folded / unfolded)

4.2ton
1.7M
5.9M
2.2M

Engine

Engine model
Engine power
Cooling system
Fuel tank
Electrical system

Doosan DB58
85HP@1800rpm
Water
150 Liters
24V DC

Hydraulic system

General
Pump model
System hyd. oil flow
Hydraulic tank
Operating pressure

Single variable displacement pump, pressure & flow controlled
K3V63*2+32 (3 pumps)
180LPM
150 Liters
250 Bar

Working table & hyd. clamp

Max. diameter
Hyd clamp

6"
6"

Outrigger (Self-loading system)

Four hyd. Jacks & outriggers - Front jacks & outriggers (swing 45°)
Ground clearance
Width

700mm
1300mm

Crawler base

Desco model (Rubber)

Main hoist

Hoist type
Linepull capacity
Spool capacity
Wire line

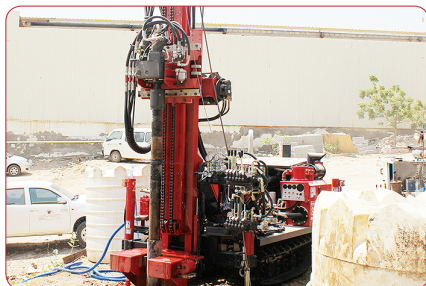
Variable speed planetary c/w brake
3ton
12mm * 25M
Drum for 300M * Dia 5mm (300kg)

Mud pump

Hydraulic cylinder operated duplex piston pump
Capacity
Max. pressure

150 LPM
40 bar

If you want the kind of drill rigs, DESCO INC. is at your solution and service.



STANDARD / OPTIONAL

	STANDARD	OPTIONAL	OPTIONAL REQUEST
Drill head			
Drill head	DSDH-750F	DSDH-850F	
Drill head - sliding	0		
Feed system			
Mast slide (dump up and down)	0		
Bolted mast foot	0		
Control panel	0		
Hydraulic system			
Auxiliary hydraulic ports		0	
Hydraulic breakout table			
Max. diameter	max. 6"	over 6"	
Single clamp	0		
Double clamp		0	
Crawler base			
Rubber track	0		
Steel track with rubber pad		0	
Main hoist			
Main winch	max. 3ton	over 3ton	
Jib with winch		0	
Wireline	0		
Mud pump			
Capacity	150LPM		
Water injection pump		0	
Triplex mud pump		0	
Inverter (5.5kw / 100V ~ 220V)		0	
DTH oil lubricator		0	
Auto rod changer		0	
SPT device		0	
Preheating system		0	
Safety cage		0	

Notice As your optional list, engine, hyd. system, cralwer and so on can be changed and design of drill rigs can be changed.

Specifications are general and subject to change without notice. Due to selected options, delivered equipment may not necessarily match that shown.

