

**desco drill rig**

Desco Inc.(HQ/Manufacturer)

HEAD OFFICE: 1240-1, Ok-Dong, Gwangsan, Gwangju, Korea

TEL : 82.62.952.4564 / FAX : 82.62.953.1593

EXPORT DIVISION

2607 jidong, Lotteccastle, 76, Soongin-Dong, Jongno-Gu, Seoul, Korea

TEL : 82-2-3670 6400 / FAX : 82-2-3670 6399

E-mail : desco@desco-inc.com



# SP7000SA-RC

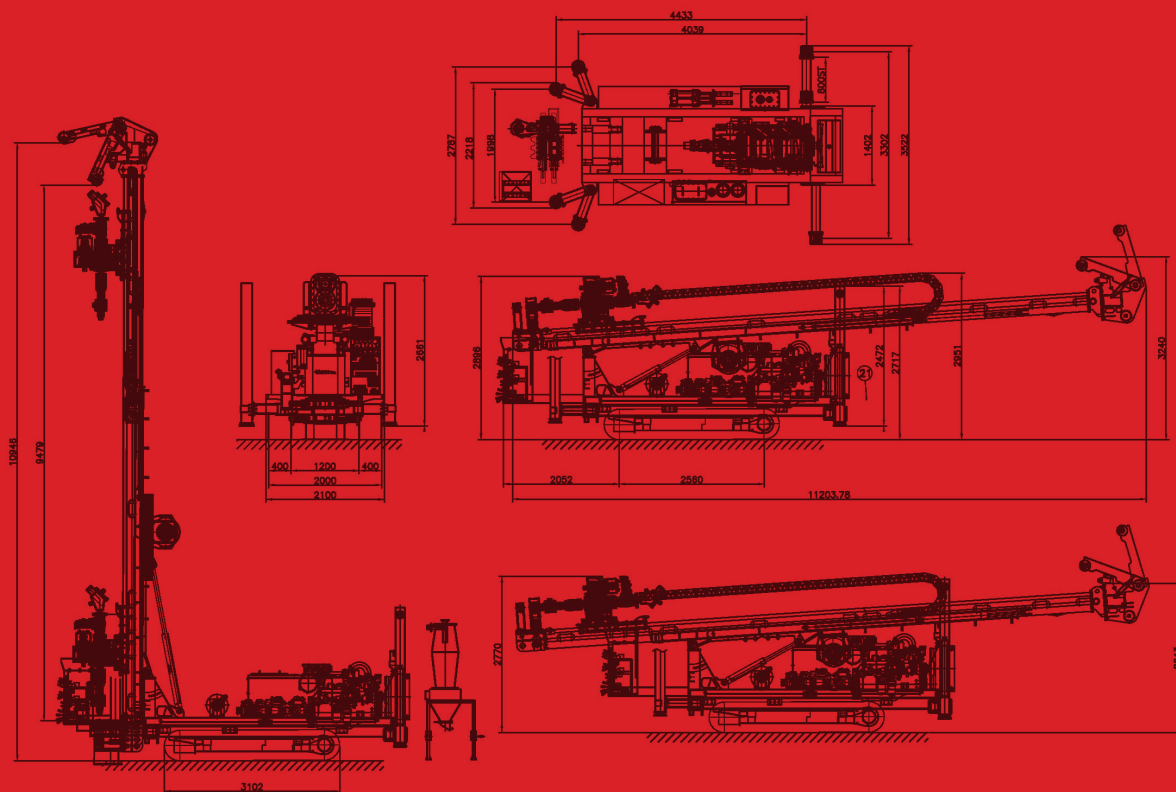
## Multi-purpose Drilling Equipment



# SP7000SA-RC (Deep exploration diamond drilling)

As one of the most standard drills upto RC 4" -500M, HQ-1100M depth for exploration drilling (RC & Diamond), SP7000SA-RC surface coring drill is an advanced addition to the SP-SA-RC series featuring a telescopic and dump mast. SP7000SA-RC is capable multi-purpose of both reverse circulation & diamond coring as well as DTH, rotary drilling methods with pullback capacity of 25 ton and a torque can be increased. SP7000SA-RC can also include an advanced rod management system that ensures safe and efficient operation. The reverse circulation (RC) drilling method utilizes to collect rock samples quickly and efficiently. The high drilling speed and low cost of RC drilling makes it an ideal method for exploration project of deeper RC & diamond drilling.

- \* SP7000SA-RC for exploration RC & diamond drilling
- \* Design for drilling up to RC - 500M & HQ - 1100M
- \* Multi-purpose (reverse circulation & diamond drilling methods)
- \* Wireline system
- \* Percussion & rotary drilling methods (Additional)
- \* Vertical, Angle Drilling (45 degree - 90 degree) capability
- \* Foot clamping system
- \* All instrument & control levers are concentrated.
- \* Mounted full package on drill rig
- \* Self-loading system
- \* Installed major hyd. Parts so easy to find spare parts in the market
- \* Options - inverter, auto rod changer, pre-heating system, wireless remote control and so on



If you want the kind of drill rigs,  
DESCO INC. is at your solution and service.





**desco** drill rig

## TECHNICAL SPECIFICATION

### Top head rotation

Rotation torque  
Rotation speed  
Rotation speed & torque can be controlled

### Two speed motors

500kg.M (low) / 100kg.M (high)  
0 ~ 100 rpm (low) / 0 ~ 1200 (high)

### Feed System

Feed system type  
Feed hydraulic cylinder  
Feed stroke  
Pull-back force  
Down force

Variable Speed Hydraulic Cylinder  
150mm\*110mm\*3750mm  
7.5M (Drill Pipe - Max. 6.0M)  
25ton  
12ton

### Dimension & Weight

Net weight  
Width  
Length (mast folded / unfolded)  
Height (mast folded / unfolded)

16.5ton  
2.3M  
10.5M  
2.8M

### Engine

Engine model  
Engine power  
Cooling system  
Fuel tank  
Electrical system

Hyundai D6AZ  
270HP@1800rpm  
Water  
300 Liters  
24V DC

### Hydraulic system

General  
Pump model  
System hyd. oil flow  
Hydraulic tank  
Operating pressure

Single variable displacement pump, pressure & flow controlled  
K3V140\*2+28\*2 (4 pumps)  
480LPM  
400 Liters  
280 Bar

### Working table & hyd. clmap

Foot clamping system  
Max. diameter  
Hyd clamp

8"  
8"

### Outrigger (Self-loading system)

Four hyd. Jacks & outriggers - Front jacks & outriggers (swing 45°)  
Ground clearance  
Width

800mm  
3000mm

### Crawler base

Doosan model (Steel)

### Main hoist

Hoist type  
Linepull capacity  
Spool capacity  
Wire line

Variable speed planetary c/w brake  
10 ton  
14mm \* 30M  
Drum for 1300M \* Dia 6mm (900kg)

### Mud pump

Hydraulic cylinder operated duplex piston pump  
Capacity  
Max. pressure

300 LPM  
40 bar

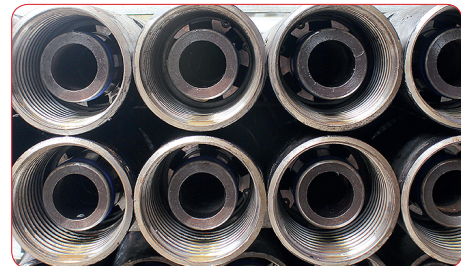
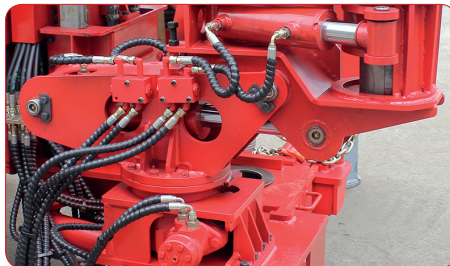
### Cutting cyclone device

Discharge hose

### Sample cyclone unit

ID 3" - 6M long flexible hose

# If you want the kind of drill rigs, DESCO INC. is at your solution and service.



## STANDARD / OPTIONAL

	STANDARD	OPTIONAL	OPTIONAL REQUEST
<b>Drill head</b>			
RC Drill head	DSDH-900FF	DSDH-950FF	
Drill head - sliding	0		
<b>Feed system</b>			
Mast slide (dump up and down)	0		
Bolted mast foot	0		
Control panel	0		
<b>Hydraulic system</b>			
Auxiliary hydraulic ports		0	
<b>Hydraulic breakout table</b>			
Max. diameter	max. 8"	over 8"	
Single clamp		0	
Double clamp	0		
<b>Crawler base</b>			
Steel track	0		
Steel track with rubber pad		0	
<b>Main hoist</b>			
Main winch	max. 10ton	over 10ton	
Jib with winch		0	
Wireline	0		
<b>Mud pump</b>			
Capacity	300LPM		
Design for angle drilling	0		
Foot clamping system	0		
Cutting cyclone device	0		
Water injection pump		0	
Triplex mud pump		0	
Inverter (5.5kw / 100V ~ 220V)		0	
DTH oil lubricator		0	
Auto rod changer		0	
Preheating system		0	
Wireless remote travel		0	
Safety cage		0	

**Notice** As your optional list, engine, hyd. system, crawler and so on can be changed and design of drill rigs can be changed.

Specifications are general and subject to change without notice. Due to selected options, delivered equipment may not necessarily match that shown.

