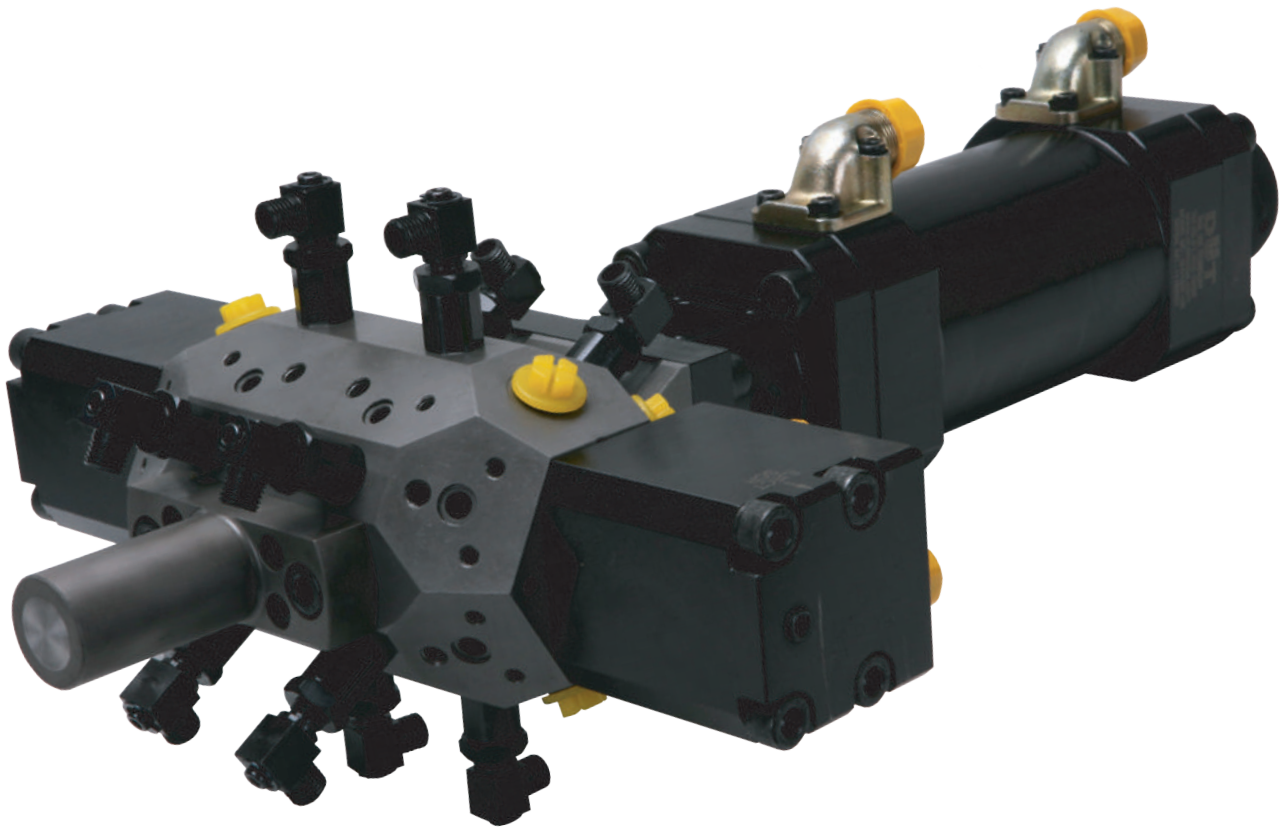


ULTIMATE HIGH PRESSURE MIXING HEAD

HIGH PRESSURE MIXING HEAD





DUT KOREA is specialist of PU machine and offers high pressure mixing head, metering pump, foaming machine and all kinds of PU solutions.

DUT KOREA

DUT has established in 1992 and became a leading company as manufacturer & specialist in field of High Pressure PU Solutions including Foaming Machine, Mixing Head, Metering Pump and all kinds of PU Applications in Korea. DUT started PU business with high quality of Mixing Head which is core of PU technology then the business expanded to all kinds of PU applications. DUT's market share of this field is getting bigger rapidly.

Solution for Polyurethane

DUT's slogan is "Solution for Polyurethane". It means we do not just sell the product but care of products until customer's satisfaction. Our technology of polyurethane is started from customer's need and finished by their satisfaction.

Huge Sales Network

Sales Department has huge international network over 57 countries including USA, Germany, Italy, UK, Poland, Hungary, Egypt, China, Mexico, Japan, India, Iran, Thailand, New Zealand, and Brazil so customers are able to contact easily in their region.



DUT KOREA introduces premium Mixing Head.

Our Mixing Head is focused on operator's convenience and high level of working efficiency.

Efficiency

DUT's mixing head has developed via advantages of previous L-type mixing head and it has patented as "Double Tilted Injection System". The system called "Double Tilted Injection System" is combined with precise nozzle then it makes best condition of laminar flow.

Compatibility

DUT has over 50 models of mixing head so customer can choose their applicable models.

Cost efficiency

From DUT's premium mixing head, customers are able to get maximum competitiveness by minimum investment and simplified design of mixing head helps you to reduce cost for maintenance and repair.

INDEX

INTRODUCTION OF MIXING HEAD

- 2K, 3K, 4K AND 4KSH TYPE

DTRC SERIES

DHV SERIES

- FEATURES
- SPECIFICATION

DHVA SERIES

- FEATURES
- SPECIFICATION

DHS SERIES

- FEATURES
- SPECIFICATION

INTRODUCTION OF MIXING HEAD

Mixing Head is a core part of foaming machine. It decides quality of end products and affects to efficiency of raw materials. DUT's mixing head has improved from advantages of L-type mixing head, and it has patented as "Double Tilted Injection System"

Long range of model helps you to choose your fitted applicable mixing head.

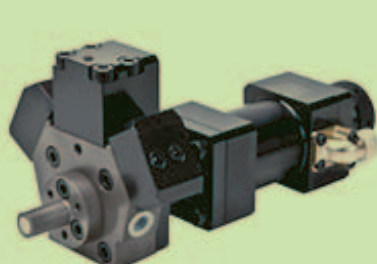
Double Tilted Nozzle and Reared Chamber Injection - DTRC

L-Type - DHVA Series

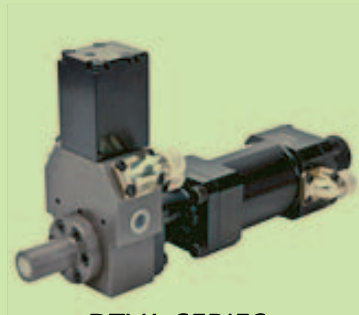
R-Type - DHS Series



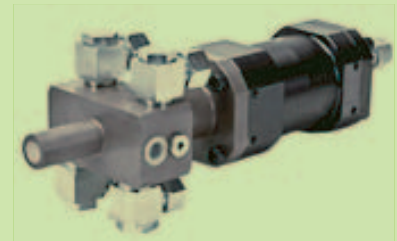
DTRC SERIES



DHV SERIES



DTVA SERIES



DHS SERIES

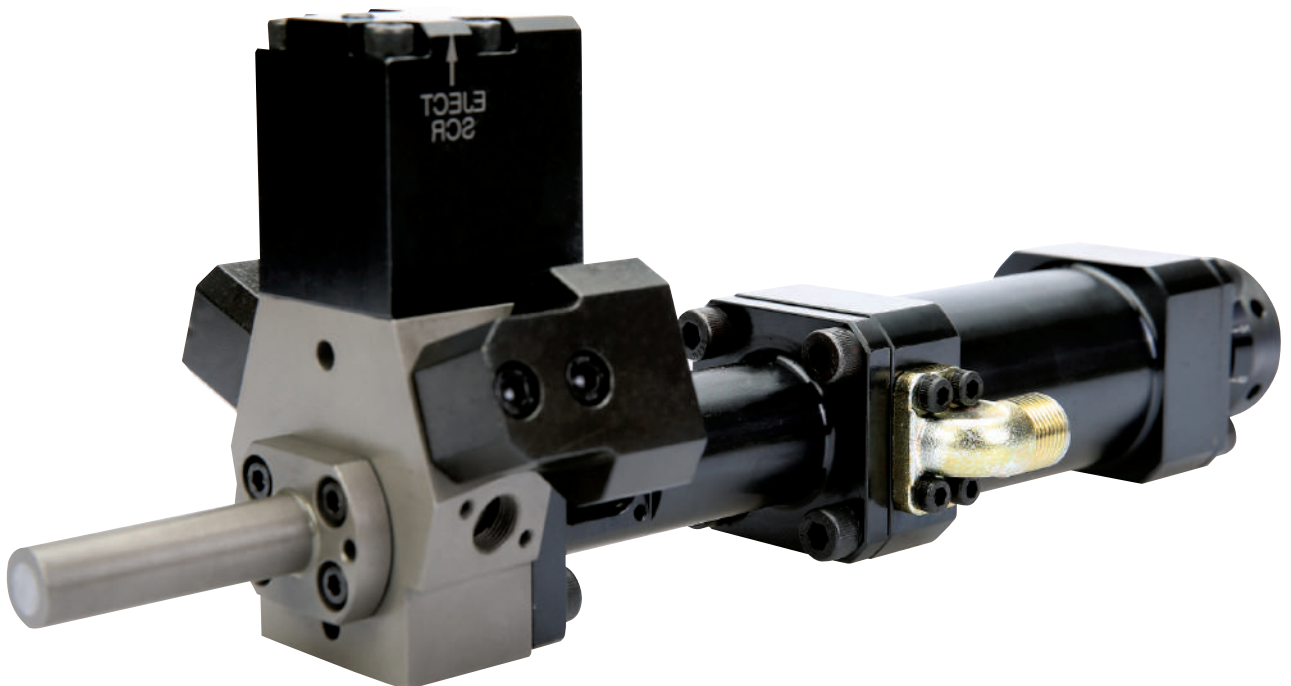
2K,3K,4K AND 4KSH TYPE

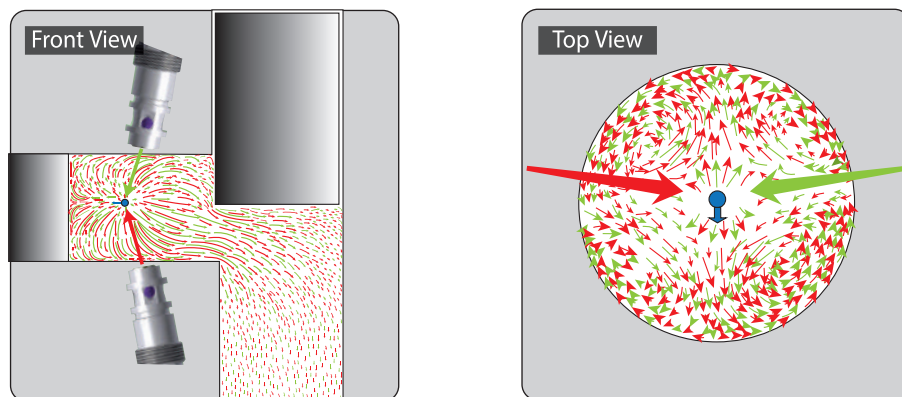
- 2K – 2Components Mixing Head with 2nozzles(POL/ISO)
- 3K – 3Components Mixing Head with 2nozzles and a pigment nozzle.
(POL/ISO/Pigment)
- 4K – 4Components Dual Mixing Head with 4nozzles(POL/ISO)
- 4KSH – 4Components SH Mixing Head with 4 nozzles(POL/ISO)

DTRC SERIES

FEATURES

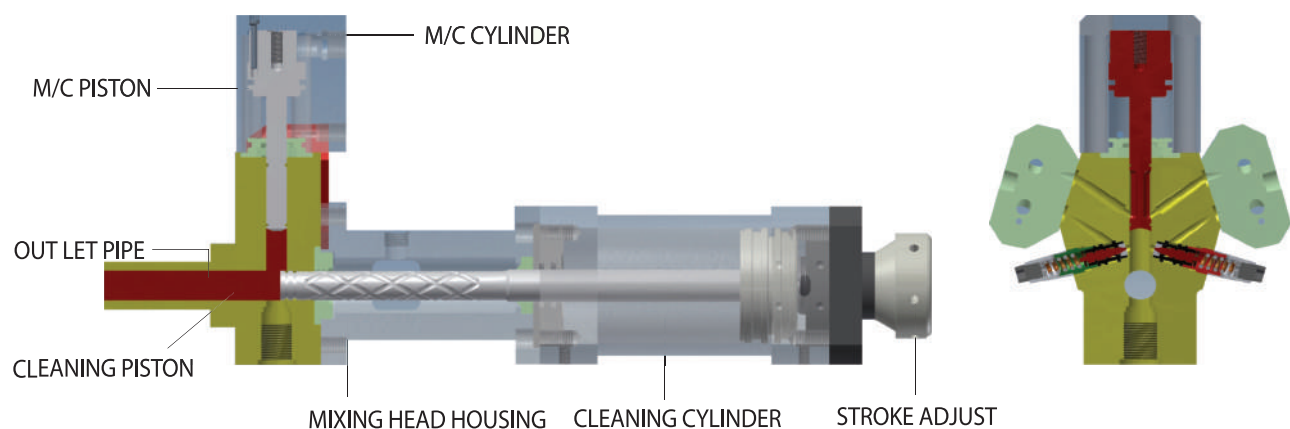
- Maximum efficiency by "Double Tilted Rear Chamber Mixing System"
- Ability to obtain the best mixing efficiency with lower pressure than other OEM's mixing systems
- High compatibility with various type of foaming machine
- Innovative nozzle control for minimum switching times for use with multi-component
- Anti-stick locking design(X-groove technology has applied to cleaning piston) & Anti-scrap floating design.
- Long life cycle & low maintenance costs
- Repeatable Stroke adjustments (for L-Style Mix Heads) from one mix head to the next
- The enhancement of the initial kinetic energy, which is caused by 1st and 2nd collisions
- The kinetic energy and laminar flow are further enhanced by the reversing effect in the extended mixing chamber
- With high viscosity materials, the DTRC maximizes the mixing efficiency by offsetting the process of kinetic energy
- The DTRC provides the softest laminar flow available with the best mixed Polyurethane





Double Tilted Rear Chamber

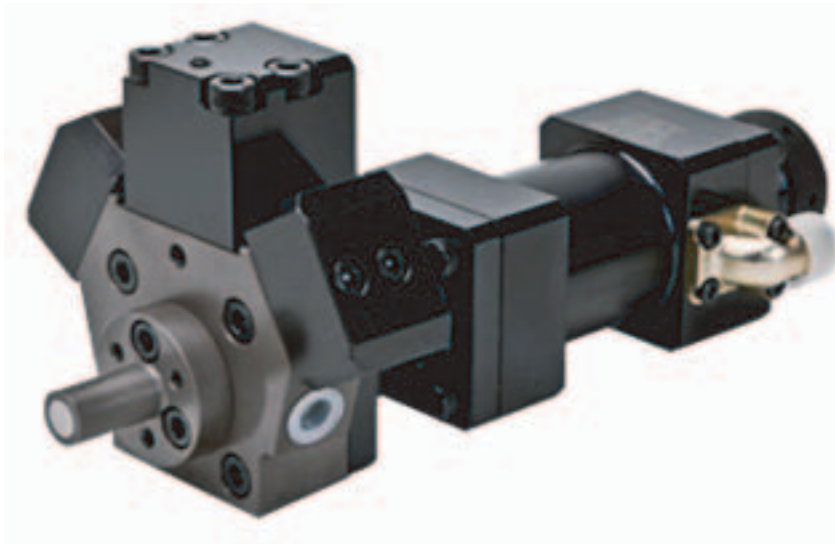
DUT's Double Tilted Rear Changer Mixing Head System(DTRC) is designed to make maximum mixing efficiency while still maintaining a desirable laminar flow. The DTRC Mix Heads are engineered to provide more chemical stream collisions (Impingement) inside the mix head's mixing chamber via double tilted nozzle angle. Moreover, the additional space provided in the mixing chamber for mixing is then able to provide the customers with the best mixing efficiency with lower pressure than previous L-type systems that are currently available by other OEM's.



DHV SERIES

DHV Series has designed for customers who need ultimate quality of end products and it has PCT patent (Double Tilted Injection System)

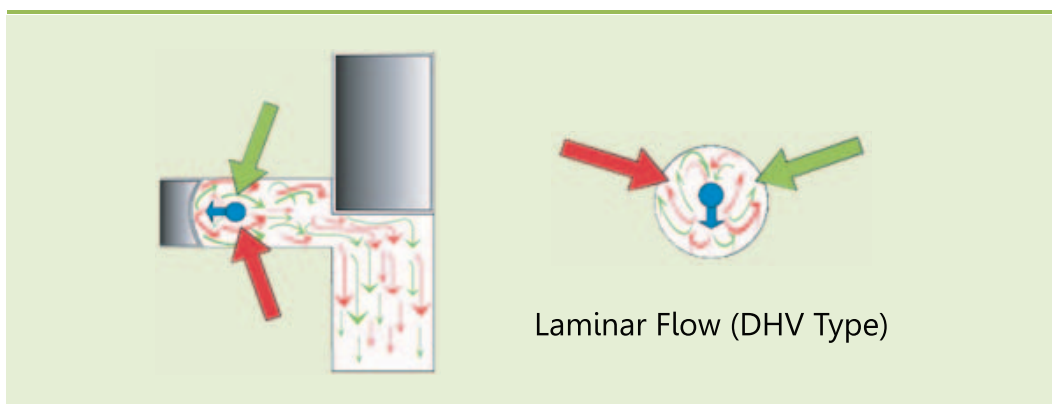
DHVM Series is special type for length of outlet pipe and it is applied to close mold.



FEATURES

Injected raw materials(POL/ISO) by double tilted angle make optimal laminar flow in housing.

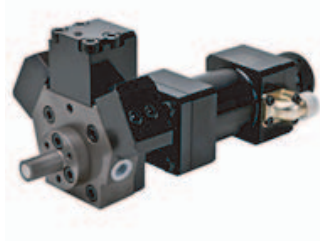
- High quality of end products are produced by dense cell structure
- Easy maintenance and repair by simple design
- Anti-Locking system for cleaning piston has applied.
- Stable compatibility with various type of PU industries
- High quality of end products with lower pressure
- Helps to make longer life time for metering pump
- Maximum of 300,000 shots with an year warranty



SPECIFICATION

DHV - 2K Series (POL/ISO)

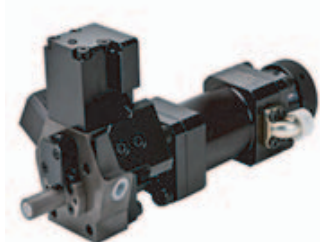
Double tilted injection type mixing head for all kinds of rigid, flexible and integral foams.



Model	Mixing Ratio	Close Mold(g/s)			Open Mold(g/s)
		1:1	1:2	1:3	
DHV 0507-2K		30~190	45~180	45~165	30~80
DHV 0507-2K-72L		30~190	45~180	45~165	30~80
DHV 0812-2K		40~420	50~320	70~280	50~180
DHV 1014-2K		50~450	60~380	80~340	60~250
DHV 1218-2K		130~1100	140~900	150~750	120~500
DHV 1422-2K		280~2000	250~1800	240~1500	230~550
DHV 1625-2K		370~3500	380~2300	600~2100	400~900

DHV - 3K Series (POL/ISO/PIGMENT)

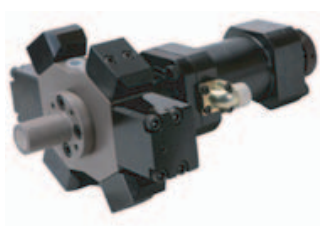
Double tilted injection type mixing head for all kinds of rigid, flexible and integral foams.



Model	Mixing Ratio	Close Mold(g/s)			Open Mold(g/s)
		1:1	1:2	1:3	
DHV 0812-3K		40~420	50~320	70~280	50~180
DHV 1014-3K		50~450	60~380	80~340	60~250
DHV 1218-3K		130~1100	140~900	150~750	120~500

DHV - 4K Series (Dual Head)

Double L- type Mixing head for automotive seat line



Model	Mixing Ratio	Close Mold(g/s)			Open Mold(g/s)
		1:1	1:2	1:3	
DHV 1422-4K		280~2400	200~1100	220~1000	250~600
DHV 1625-4K		320~3800	430~2300	450~1800	400~800

DHVM - 2K Series (2K Mixing Head with changeable outlet pipe)

2K Mixing Head with changeable outlet pipe to inject deep in mould



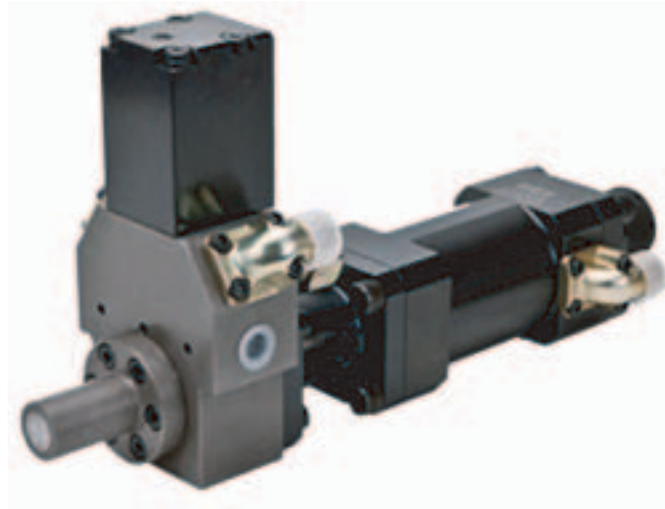
Model	Mixing Ratio	Close Mold(g/s)			Open Mold(g/s)
		1:1	1:2	1:3	
DHV 0507-2K		30~190	45~180	45~165	30~80
DHV 0812-2K		40~420	50~320	70~280	50~180
DHV 1014-2K		50~450	60~380	80~340	60~250
DHV 1218-2K		130~1100	140~900	150~750	120~500
DHV 1422-2K		280~2000	250~1800	240~1500	230~550
DHV 1625-2K		370~3500	380~2300	600~2100	400~900

DHVA SERIES

DHVA Series is L-type mixing head and offers high efficiency with economical price. It consists of 4 types as 2K, 3K, 4K and 4KSH.

4K and 4KSH type mixing heads are designed to produce 2 and more different type of foams by one mixing head.

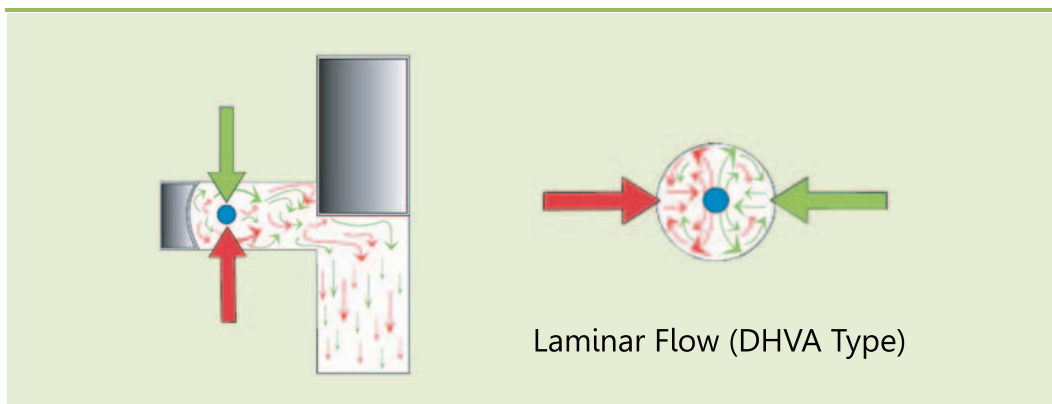
Also "Tungsten Carbide" process has applied to 2KF and 4KSHF to minimize abrasion inside of mixing head.



FEATURES

DHVA makes optimal mixing efficiency by simple structure and economical price gives customer's high competitiveness in their field.

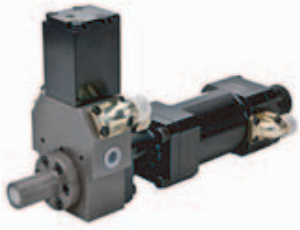
- High mixing efficiency with economical price
- Easy maintenance and repair by simple design
- Various type of foams can be produced by one mixing head (4KSH)
- Anti-Locking system for cleaning piston has applied.
- Stable compatibility with various type of PU industries.
- Maximum of 300,000 shots with an year warranty



SPECIFICATION

DHVA-2K SERIES

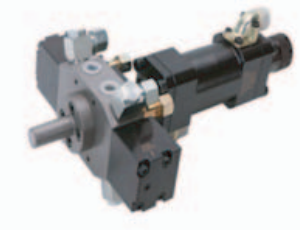
L- type mixing head for all kinds of rigid, flexible and integral foams.



Model	Mixing Ratio	Close Mold(g/s)			Open Mold(g/s)
		1:1	1:2	1:3	
DHVA 0507-2K		30~190	45~180	45~165	30~80
DHVA 1220-2K		130~1000	130~700	150~600	130~500

DHVA - 4K Series (Dual Head)

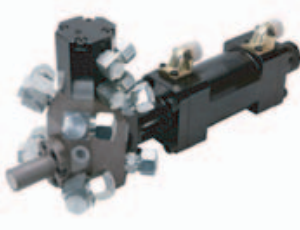
Double L- type 4K Mixing head



Model	Mixing Ratio	Close Mold(g/s)			Open Mold(g/s)
		1:1	1:2	1:3	
DHVA 0814-4K		80~700	60~320	70~280	50~250
DHVA 1016-4K		110~800	80~450	80~350	80~300
DHVA 1220-4K		130~1000	250~1000	250~700	150~500

DHVA - 4KSH Series (SH Type)

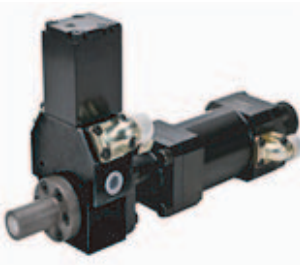
Various type of foams can be manufactured



Model	Mixing Ratio	Close Mold(g/s)			Open Mold(g/s)
		1:1	1:2	1:3	
DHVA 1220-4KSH		130~1100	130~950	150~700	130~550

DHVA-2KF

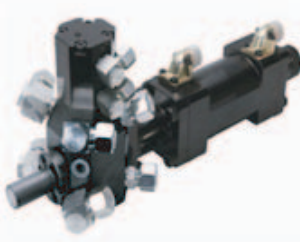
"Tungsten Carbide" process has applied



Model	Mixing Ratio	Close Mold(g/s)			Open Mold(g/s)
		1:1	1:2	1:3	
DHVA 1220-2KF		130~1000	130~700	150~600	130~500

DHVA-4KSHF

"Tungsten Carbide" process has applied



Model	Mixing Ratio	Close Mold(g/s)			Open Mold(g/s)
		1:1	1:2	1:3	
DHVA 1014-4KSHF		100~720	80~840	120~600	80~350

DHS SERIES

DHS Series called R-type mixing head in common and it is applied to inject big volume of output.

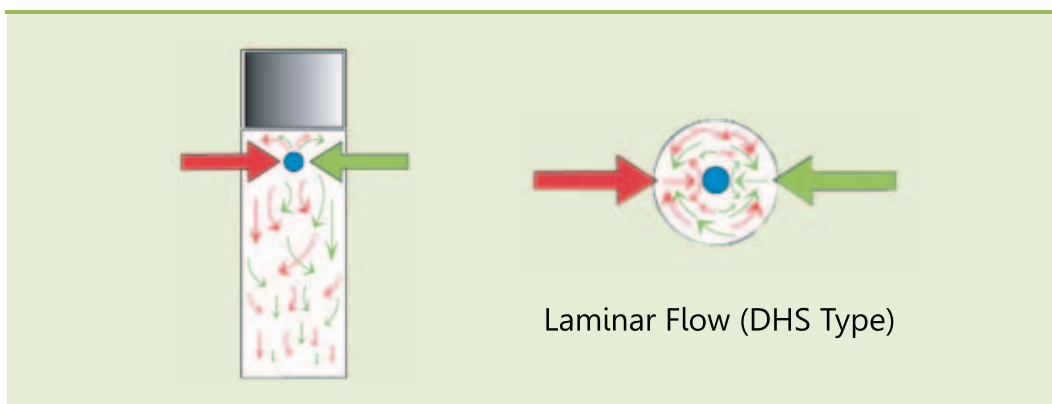
DHS NA type is special type for PU sandwich panel line.



FEATURES

DHS has straight structure for injection and simply designed system makes optimal mixing efficiency furthermore, economical price gives customer's high competitiveness in their field.

- High mixing efficiency with economical price
- Injection for big volume of output and long distance
- Easy maintenance and repair by simple design
- Quick operating
- Wide injection range
- Stable compatibility with various type of PU industries
- Maximum of 300,000 shots with an year warranty



SPECIFICATION

DHS - 2K (R-Type Mixing Head)

R-Type mixing head to inject big volume of output



Model	Mixing Ratio	Close Mold(g/s)			Open Mold(g/s)
		1:1	1:2	1:3	
DHS 12R-2K		150~1300	230~1000	250~900	150~80
DHS 16R-2K		400~2000	250~1300	270~1300	-
DHS 18R-2K		400~2500	450~2300	500~2000	-
DHS 25R-2K		1000~5000	1250~4500	1400~4100	-
DHS 30R-2K		1000~8000	1250~4500	1400~4100	-
DHS 36R-2K		3000~10000	3050~10200	3500~9000	-

DHS - 3K (R-Type 3K Mixing Head)

R-Type mixing head to inject big volume of output



Model	Mixing Ratio	Close Mold(g/s)			Open Mold(g/s)
		1:1	1:2	1:3	
DHS 16R-3K		400~2000	250~1300	270~1300	-

DHS - 4K (R-Type 4K Mixing Head)

R-Type mixing head to inject big volume of output



Model	Mixing Ratio	Close Mold(g/s)	Open Mold(g/s)
		1:1	
DHS 36R-4K		3000~10000	-

DHS-08VN

For PU sandwich panel continuous production line.



Model	Mixing Ratio	Close Mold(g/s)			Open Mold(g/s)
		1:1	1:2	1:3	
DHS-08VN		-	-	-	30~300

GLOBAL NETWORK

 **DUT-China**
SHANGHAI
E-mail : Kimhongam@hotmail.com



DUT-Korea Head Office
914-4, Janglim-dong, Saha-gu, Busan, Korea 604-040
E-mail : webmaster@dutkorea.com



 **DUT-Russia**
MOSCOW
E-mail : khmile@lprglobal.com

 **DUT-Europe**
LUXEMBOURG
E-mail : fssselbrandjy@pofi.lu

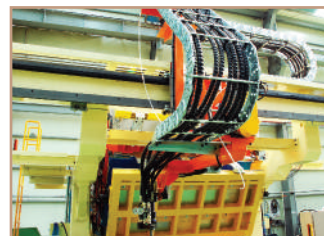
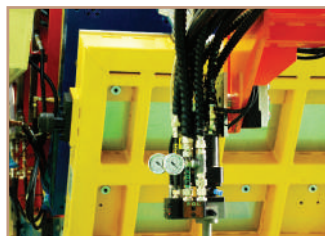
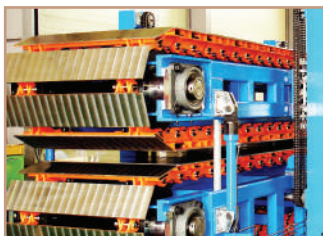


 **DUT-Iran**
TEHRAN
E-mail : info@bfgco.com

 **DUT-middle East**
DUBAI
E-mail : business@dutkorea.com

 **DUT-South Africa**
E-mail : africa@dutkorea.com

 **DUT-India**
BANGALORE
E-mail : siddhifoams@airtelmail.in
siddhi@bgl.vsnl.net.in



GLOBAL NETWORK



ULTIMATE HIGH PRESSURE MIXING HEAD

HIGH PRESSURE MIXING HEAD

R&D

DUT's R&D Team consists of PU specialists. They are always consider to solve customer's difficulties and DUT's innovative technology is created from customer's requirement. DUT's R&D center is totally set by customers.

Q/A

To offer reliable products, Q/A team has been working to control product's quality. The technical data and troubleshootings are stored in DUT's Q/A database, and it helps to produce DUT's better products.

PRODUCTION

The Production team has organized by skilled engineers and they manufacture DUT's innovative products by reliable equipments.

Korea Head Office

Address : 914-4, Janglim-dong, Saha-gu, Busan, Korea
604-040
E-mail : webmaster@dutkorea.com
Tel : + 82 51 202 0586
Fax : + 82 51 202 0647

China Office

Address : Rm501-A, Hengjie Bldg, No.1234,
Xinsongjiang Road, Songjiang Shanghai, China, 201600
E-mail : Kimhongam@hotmail.com
Tel : + 86 216 782 5061
Mobile : + 86 13801883360

India Office

Address : 106/64, byraveshwara Industrial Estate,
Andrahail Main Road, Hegganahalli, Peenya IIInd Stage,
Bangalore-560 091
E-mail : siddhihoams@airtelmail.in, siddhi@bgl.vsnl.net.in
Tel : +91 802 836 4563
Mobile : +91 984 527 1701

Europe Office

Address : 19, rue de Luxembourg L-4391 PONTPIERRE
E-mail : fisselbrandjy@pofl.lu
Mobile : + 33 6 78 66 41 26
Fax : (00 352) 26 55 68 55

Brazil Office

Address : Rua Dona Maria Fidélis, 161, Diadema - SP-
Brasi, BRAZIL
E-mail : comex@amino.com.br
Tel : + 55 11 4077 3777

North America Office

USA Office,
Address : 2425 Amesbury Road - Akron, OH 44313,
USA
E-mail : Jeff@hunterpure.com
Tel : + 1 330 805 4414
Mobile : +1 330 801 6766
Fax : +1 330 805 4414

Canada Office

Address : Toronto, Ontario, Canada
E-mail : khmile@lprglobal.com
Tel : + 1 905 370 0410
Fax : +1 416 572 3736

Iran Office

Address : No.11,Second floor, Build, NO.382, Moalem
Blvd, Yaft Abad, Tehran-Iran
E-mail : info@bfgco.com
Tel : +9821 66211 994
Fax : +9821 6629 6919