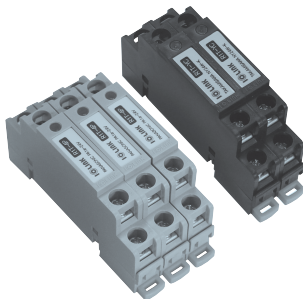


R1T Series 1 form A

User's Guide



Thank you for purchasing product of SAMWON ACT.
Please check model of product that you purchase first, and read this manual prior to use it.

• Caution for Safety

⚠ Caution Case that results in serious damage in human body or equipment, and fire if user handles this equipment wrongly

⚠ Warning Case that results in slight damage in human body or equipment, and fire if user handles this equipment wrongly

⚠ Caution

1. Do Not use other voltage except appointed voltage. It may be the cause of fire or damage of equipment.
2. Use it within nominal voltage and current which are marked on load.
It may be the cause of fire or damage of equipment.
3. Check COMMON polarity of using controller (PLC, etc) first, and then select proper product.
It may be the cause of fire or damage of this equipment and user's.
4. Make controller and connection cable between relay boards after checking internal wiring of relay board and PIN (terminal or socket) array of controller if you want to make it for yourself.
It may be the cause of fire, and malfunction or damage of this equipment and user's.

※ The connection cable for PLC of various makers is provided by us. Please refer to the catalogue or contact Head or branch office if you need more detail models and specifications.

⚠ Warning

1. Plug or unplug power line and/or connector for signal after making sure to shut off power so as that it is prevented to be damaged or malfunctioned.
2. Read this user's guide which is attached to product, and check product's performance, specification, operation pattern, signal, and how to handle prior to use. Keep user's guide please.
3. When wiring the terminal block, please tighten it with the specified torque using the appropriate tool. If it is outside of this range torque, it may cause malfunction due to breakage or looseness of tightening surface terminal.

Model Selection

Model	Installation Relay	IO Point(s)	Coil Rated voltage	Common		Interface		Dimensions (W×Dmm)	Mounting method
				Coil	Contact	Coil	Contact		
R1T-YC	TAKAMISAWA NYP-24W-K	1Point (1a×1)	24V DC	Individual Power (Short bar built)	Individual Com. (Short bar built)	Screw Terminal	M3 Screw	10,0×67,0	DIN Rail (Channel)
R1T-4P	PANASONIC APAN3124								

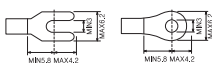
Relay Specification

Item		NYP-24W-K	APAN3124
Contact	Arrangement	1Form C (1a)	1 Form A (Bifurcated)
	Nominal switching capacity (resistive load)	5A 250V AC / 5A 30V DC	5A 250V AC / 5A 30V DC
	Max. switching current	5A	5A
	Max. switching voltage	270V AC / 150V DC	250V AC / 110V DC (0.4A)
Coil	Nominal voltage	24V DC	24V DC
	Pick-up voltage	16.1V DC	70% max. of Rated voltage
	Drop-out voltage	2.4V DC	5% min. of Rated voltage
	Coil resistance	4,800 Ω	5,236 Ω
	Nominal operation power	120mW	110mW
Surge voltage between contact and coil		5,080V	6,000V
Initial breakdown voltage between contact and coil		3,000V AC 1min	3,000V rms for 1min
Country of origin		JAPAN	CHINA

Material/Specification

Case	Modified PPO
P.C.B	Epoxy 1.6t / 2oz
Applicable wire	AWG22-16 (MAX / 1.5mm)
Terminal Screw	M3 X 6L
Screw torque	7~8kgf・cm (0.68~0.78 N・m)
Ambient temperature	-10℃ ~ +50℃ (No condensation)

Applicable crimp terminal

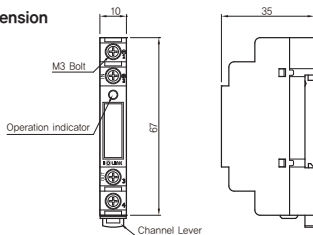


Accessories

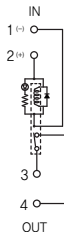
- 4Pole Short bar
(When purchasing 10 units,
5 embedded.)



Dimension



Wiring Diagram



※ The above specifications are subject to change without notice.

※ Please contact HQ or branch office where you purchased product for A/S of this product or technique.



삼원ACT(주)
SAMWON ACT Co., Ltd.

■ HQ : 47035, 28, Daedong-ro, Sasang-gu, Busan, Korea

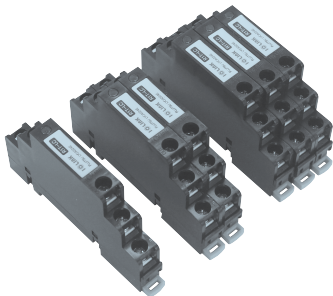
TEL : (051)320-7777 FAX : (051)312-2233

■ SEOUL Office: 501, Iljik-dong, Gwangmyeong-si, Gyeonggi-do

TEL : (02)837-2230 FAX : (02)837-2226

R1T-LC 1 form C

User's Guide



Thank you for purchasing product of SAMWON ACT.
Please check model of product that you purchase first, and read this manual prior to use it.

• Caution for Safety

⚠ Caution Case that results in serious damage in human body or equipment, and fire if user handles this equipment wrongly

⚠ Warning Case that results in slight damage in human body or equipment, and fire if user handles this equipment wrongly

⚠ Caution

1. Do Not use other voltage except appointed voltage. It may be the cause of fire or damage of equipment.
2. Use it within nominal voltage and current which are marked on load.
It may be the cause of fire or damage of equipment.
3. Check COMMON polarity of using controller (PLC, etc) first, and then select proper product.
It may be the cause of fire or damage of this equipment and user's.
4. Make controller and connection cable between relay boards after checking internal wiring of relay board and PIN (terminal or socket) array of controller if you want to make it for yourself.
It may be the cause of fire, and malfunction or damage of this equipment and user's.

※ The connection cable for PLC of various makers is provided by us. Please refer to the catalogue or contact Head or branch office if you need more detail models and specifications.

⚠ Warning

1. Plug or unplug power line and/or connector for signal after making sure to shut off power so as that it is prevented to be damaged or malfunctioned.
2. Read this user's guide which is attached to product, and check product's performance, specification, operation pattern, signal, and how to handle prior to use. Keep user's guide please.
3. When wiring the terminal block, please tighten it with the specified torque using the appropriate tool. If it is outside of this range torque, it may cause malfunction due to breakage or looseness of tightening surface terminal.

• Model Selection

Model	Installation Relay	IO Point(s)	Coil Rated voltage	Common		Interface		Dimensions (W×Dmm)	Mounting method
				Coil	Contact	Coil	Contact		
R1T-LC	FUJITSU FTR-LYCA024E	1Point (1c×1)	24V DC	Individual Power (Short bar built)	Individual Com. (Short bar built)	Screw Terminal M3 Screw		10.0×76.0	DIN Rail (Channel)

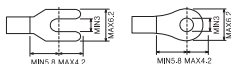
• Relay Specification

Item		FTR-LYCA024E
Contact	Arrangement	1Form C (1a)
	Nominal switching capacity (resistive load)	6A 250V AC/6A 24V DC
	Max. switching current	6A
	Max. switching voltage	250V AC
Coil	Nominal voltage	24V DC
	Pick-up voltage	15.9V DC
	Drop-out voltage	1.2V DC
	Coil resistance	3,390Ω
	Nominal operation power	170mW
Surge voltage between contact and coil		6,000V (1.2x50 Standard wave)
Initial breakdown voltage between contact and coil		4,000V AC (50/60Hz) 1min
Country of origin		CHINA

• Material/Specification

Case	Modified PPO
P.C.B	Epoxy 1.6t / 2oz
Applicable wire	AWG22~16 (MAX / 1.5mm ²)
Terminal Screw	M3 X 6L
Screw torque	7~8kgf · cm (0.68~0.78 N · m)
Ambient temperature	-10℃ ~ +50℃ (No condensation)

• Applicable crimp terminal

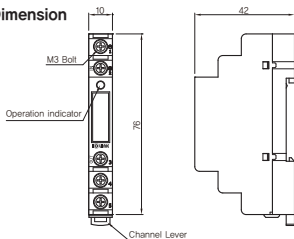


• Accessories

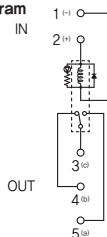
- 4Pole Short bar (When purchasing 10 units, 5 embedded.)



• Dimension



• Wiring Diagram



※ The above specifications are subject to change without notice.

※ Please contact HQ or branch office where you purchased product for A/S of this product or technique.



삼원ACT(주)
SAMWON ACT Co. Ltd.

■ HQ : 47035, 28, Daedong-ro, Sasang-gu, Busan, Korea

TEL : (051)320-7777 FAX : (051)312-2233

■ SEOUL Office: 501, Iljik-dong, Gwangmyeong-si, Gyeonggi-do

TEL : (02)837-2230 FAX : (02)837-2226