



# EVERDIGM Telescopic Boom Type Lorry Crane



# High value added **LORRY CRANE**

*Designed with dedicated efforts to become 1st player in lifting industry*

*To manufacture 'MASTERPIECE' crane HKTC thinks ahead to be perfect and leaps ahead to be customer-oriented, through the continuous field test.*

---

#### **Durable boom & best performance**

All booms made by ATOS80 having high tensile strength are designed to maximize durability under the smooth & powerful performance.

#### **Stable & safe outriggers**

Outriggers having the maximum span can guarantee operation safety and protect truck and crane during the operation. Main outriggers are optionally designed in slewing type, not to be damaged during the drive on sloping ground.





## Never stop evolving

To pioneer new way up to the invisible beyond customer's expectation, EVERDIGM offers high-end cranes, which are new things to be seen and to be felt.

Roller bearing to slide outriggers is advantageous to cost effective maintenance and smooth movement of outriggers.



# Premier Performance

## Reliable, Durable, Maneuverable and Innovative Telescopic Truck-Mounted Crane

Designed to maximize capability, durability and convenience, starting from development stage.



### Boom Sliding Pad

By thin groove on pad surface, cost effectiveness for grease injection can be made.

### 3 Plating Galvanization

All components are fully galvanized to prevent rust.



### Over center valve

By high-quality over-center valve, durability is improved. Overload can be controlled by pressure switch.



### Hoist Winch

For safety, automatic mechanical brake is equipped and running noise is small.



### Over-hoisting prevention device

By wireless over-hoisting prevention device, it can prevent damage and breakdown of wire and reel.



### Top seat console

Optimally & ergonomically designed top seat console guarantees all day comfort to operator.



### Slewing reduction gear

For smooth but powerful operation, hydraulic internal brake and worm reduction gear are equipped.



### Wire separation prevention device

It guarantees 3 full turns of wire rope to remain on winch drum, to prevent wire from being separated.



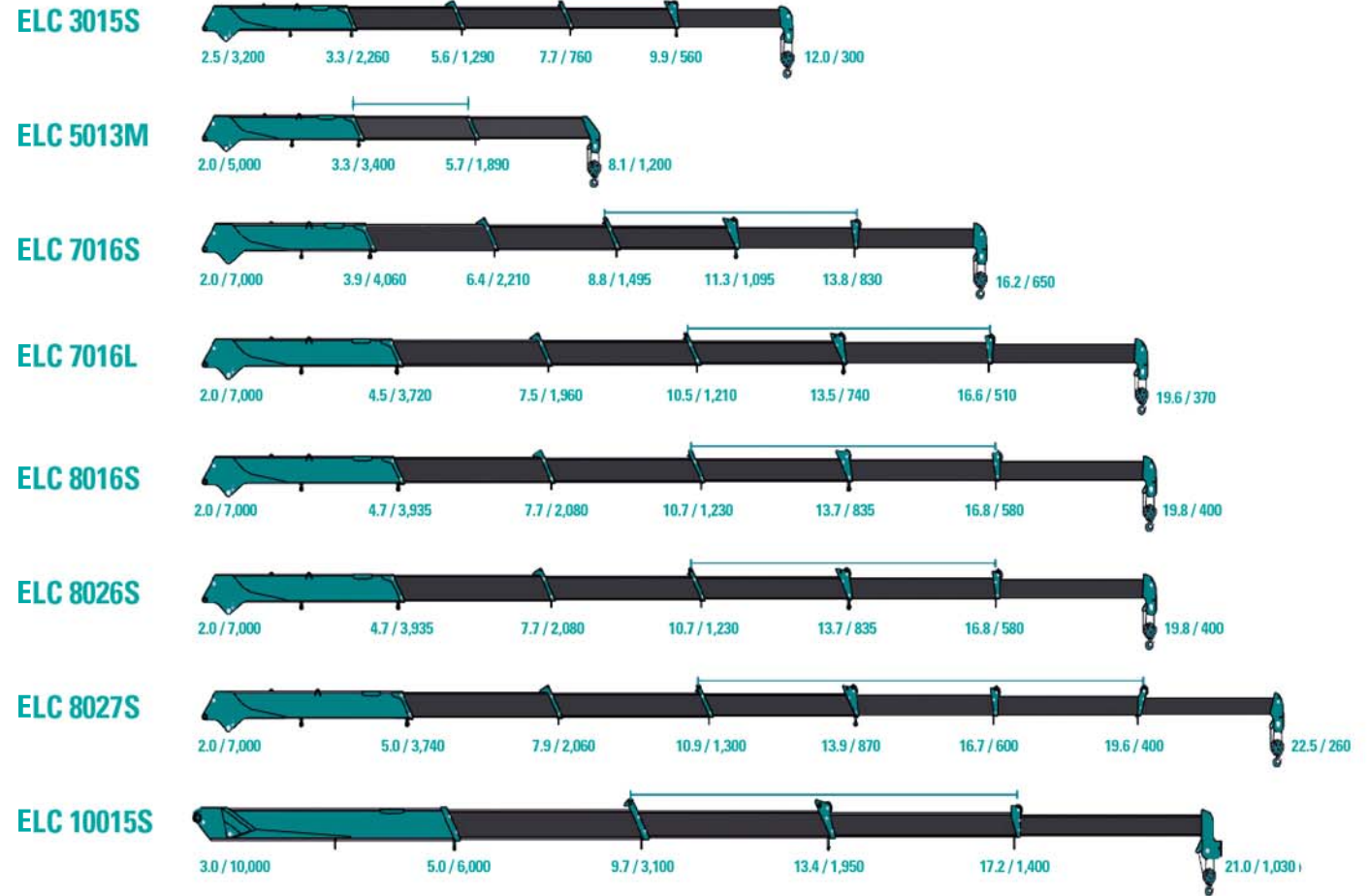
### Main outrigger

180° slewing type of main outriggers help protect against damage during the drive.

Manufactured in compliance  
with the highest standards  
in design, durability and safety,  
EVERDIGM cranes ensure optimized  
performance.



Loading Capacity m / kg



\* According to Boom section adjustment and optional item application, variant models can be available.  
\* The last alphabet on model code can be changed, according to variant models.

# Telescopic boom type lorry crane

		ELC-3015S	ELC-5013M	ELC-7016S	ELC-7016L	ELC-8016S	ELC-8026S	ELC-8027S	ELC-10015S
Lifting Capacity		7.7 ton.m	11.0 ton.m	15.5 ton.m	15.5 ton.m	18.0 ton.m	18.0 ton.m	18.0 ton.m	36 ton.m
		3.2 ton / 2.5m	5.0 ton / 2.0 m	6.0 ton / 2.4 m	7.0 ton / 2.0 m	7.0 ton / 2.4 m	7.0 ton / 2.4 m	7.0 ton / 2.4 m	10.0 ton / 3.0 m
Section-wise rated Capacity	1st	2,390 kg / 3.4 m	3,200 kg / 3.3 m	4,060 kg / 3.9 m	3,405 kg / 4.5 m	3,935 kg / 4.7 m	3,935 kg / 4.7 m	3,740 kg / 5.0 m	6,000 kg / 5.9 m
	2nd	1,280 kg / 5.6 m	1,850 kg / 5.7 m	2,210 kg / 6.4 m	1,670 kg / 7.5 m	2,080 kg / 7.7 m	2,080 kg / 7.7 m	2,060 kg / 7.9 m	3,100 kg / 9.7 m
	3rd	850 kg / 7.8 m	1,200 kg / 8.1 m	1,495 kg / 8.8 m	1,060 kg / 10.5 m	1,230 kg / 10.7 m	1,230 kg / 10.7 m	1,300 kg / 10.9 m	1,950 kg / 13.4 m
	4th	690 kg / 10.0 m	-	1,095 kg / 11.3 m	740 kg / 13.5 m	835 kg / 13.7 m	835 kg / 13.7 m	870 kg / 13.9 m	1,400 kg / 17.2 m
	5th	520 kg / 12.2 m	-	830 kg / 13.8 m	510 kg / 16.6 m	580 kg / 16.8 m	580 kg / 16.8 m	600 kg / 16.7 m	1,030 kg / 21.0 m
	6th	-	-	650 kg / 16.2 m	370 kg / 19.6 m	400 kg / 19.8 m	400 kg / 19.8 m	400 kg / 19.6 m	-
	7th	-	-	-	-	-	-	260 kg / 22.5 m	-
Maximum working Radius		12.2 m	8.1 m	16.2 m	19.6 m	19.8 m	19.8 m	22.5 m	21.0 m
Maximum working Height		14.4 m	10.4 m	18.5 m	22.0 m	22.0 m	22.0 m	24.6 m	23.2 m
Hydraulic Fluids	Rated Flow (1,000 rpm)	45 ℓ / min			61 ℓ / min				(80 ℓ + 80 ℓ) / min
	Rated Pressure	210 bar							
Boom	Shape	Hexagonal	Pentagonal	Hexagonal					
	Section	5	3	6	6	6	6	7	5
	Structure	3 Cylinders + 1 Wire	1 Cylinder + 1 Wire	3 Cylinders + 2 Wires				3 Cylinders + 3 Wires	2 Cylinders + 2 Wires
	Angle	0° ~ 80°					-16° ~ 79°		0° ~ 80°
Body	Slewing speed	2.0 rpm					1.8 rpm		2.0 rpm
Outrigger	Supply Scope		Main; 2EA			Main; 2EA + Rear; 2EA			
	Movement	Horizontal	Hydraulically automatic	Manual		Hydraulically automatic			
		Vertical		Hydraulically automatic					
Recommendable Truck Chassis (Payload basis)		Over 4.5 ton		Over 5.0 ton	Over 7.0 ton			Over 11.0 ton	

## Remarks

1. According to Boom section adjustment and optional item application, variant models can be available.
2. The specifications are subject to change without prior-notice, according to product improvements.
3. Rated capacity can be changed, according to crane strength, vehicle weight, loaded condition, crane mounting position, operating condition and the likes.
4. The separate Contract with specification sheet prevails the above-mentioned Specification.



### Sales & Marketing

Room#1203, WoolimLion's Valley2,  
2 Gasan digital 1-ro, Geumcheon-gu, Seoul, Korea  
Tel +82-2-801-0800 Fax +82-2-801-0899

### Head office & Factory

49, Buyeong-gil, Jincheon-eup, Jincheon-gun,  
Chungcheongbuk-do, Korea  
Tel +82-43-530-3300 Fax +82-43-530-3429