

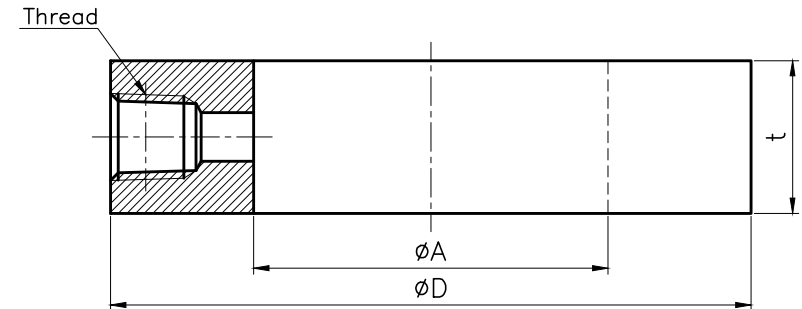
* Surface type : RF

Unit : mm

Flange rating		D							A						
		150#	300#	400#	600#	900#	1500#	2500#	150#	300#	400#	600#	900#	1500#	2500#
B16.5	1/2"	47.8		54.1		63.5		69.9				14.2			
	3/4"	57.2		66.8		69.9		76.2				20.6			
	1"	66.8		73.2		79.5		85.9				26.9			
	1 1/2"	85.9		95.3		98.6		117.6			44.5			41.4	
	2"	104.9		111.3		143		146.1			55.6			52.3	
	2 1/2"	124		130.3		165.1		168.4			66.5			63.5	
	3"	136.7		149.4		168.4	174.8	196.9			81			78.7	
	4"	174.8	181.1	177.8	193.8	206.5	209.6	235	106.4		102.6			97.8	

Flange rating		D						A					
		10K	16K	20K	30K	40K	63K	10K	16K	20K	30K	40K	63K
JIS	15A	57			64		69	22				18	
	20A	62			69		75	28				23	
	25A	74			79		80	34				29	
	32A	84			89		90	43				38	
	40A	89			100		107	49				43	
	50A	104			114		125	61				55	
	65A	124			140		152	77			68		

Flange rating		Available		Unavailable	
		Thread(t)			
		1/4"(25)	3/8"(30)	1/2"(30)	3/4"(45)
1/2"	150#				
	300#				
	900, 1500, 2500#				
3/4"	150#				
	300, 400, 600, 900, 1500, 2500#				
1"	150, 300, 400, 600, 900, 1500, 2500#				
1 1/2"	150, 300, 400, 600, 900, 1500, 2500#				
2"	150, 300, 400, 600, 900, 1500, 2500#				
2 1/2"	150, 300, 400, 600, 900, 1500, 2500#				
3"	150, 300, 400, 600, 900, 1500, 2500#				
4"	150, 300, 400, 600, 900, 1500, 2500#				



- Main order -

1. Base model : A100 (Flushing ring)

2. Flushing ring material

- ☐ BX : 304SS ☐ DX : 304L SS ☐ CX : 304SS ☐ EX : 316L SS
☐ LX : Monel ☐ KX : Hastello-C ☐ RX : 304SS with PTFE Coating
☐ SX : 316SS with PTFE Coating ☐ 51 : 316L SS with PTFE Coating
☐ 53 : Teflon ☐ 54 : PVC ☐ ZZ : Other _____

3. Process connection type

XXX Refer to process connection type table

4. Plug connection size

- ☐ 0 : One-1/4"NPT(F) ☐ 1 : One-3/8"NPT(F) ☐ 2 : One-1/2"NPT(F)
☐ 3 : Two-1/4"NPT(F) ☐ 4 : Two-3/8"NPT(F) ☐ 5 : Two-1/2"NPT(F)
☐ 9 : Other _____

5. Nipple and plug connection type

- ☐ A : One - With plug ☐ B : Two - With plug
☐ C : With plug and nipple ☐ D : Two - With nipple ☐ Z : Other _____

6. Isolation valve material

- ☐ A : None ☐ B : 316SS AND 316L SS ☐ C : Monel
☐ D : Hastelloy-C ☐ E : Teflon ☐ Z : Other _____

7. Valve gasket material

- ☐ 1 : Teflon ☐ 2 : Graphite

8. Flange gasket material

- ☐ 00 : None ☐ 10 : Teflon ☐ 20 : Spiral wound

1	2	3	4	5	6	7	8
A100	BX	XXX	0	A	B	1	00

2							
1							
NO	REASON	DATE	REVIEWED BY	CHECKED BY	APPROVED BY		

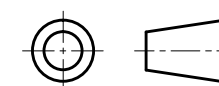
REVISION

This drawing and the specifications are the intellectual property of WISE CONTROL INC. therefore, without a prior written consent from WISE CONTROL INC., it is strictly prohibited to reproduce the drawing or manufacture the identical products according to its specifications provided here.

Unless otherwise specified

Decimal dimensions ± 5
 Angle dimensions $\pm 1'$
 Dimensions are in milli meter

THIRD ANGLE PROJECTION



	SIGNATURE	DATE
PREPARED BY	J.S.PARK	20.09.11
REVIEWED BY	S.M.JUNG	20.09.11
APPROVED BY	D.M.CHO	20.09.11
REV. NO.	0	

WISE®
 WISE Control Inc.

DRAWING TITLE :

Flushing ring

DWG NO.

A100-S.T.D

SCALE : N/S

W.T.

SHEET OF