

Single Channel Flame Proof Type Gas Detector Receiver

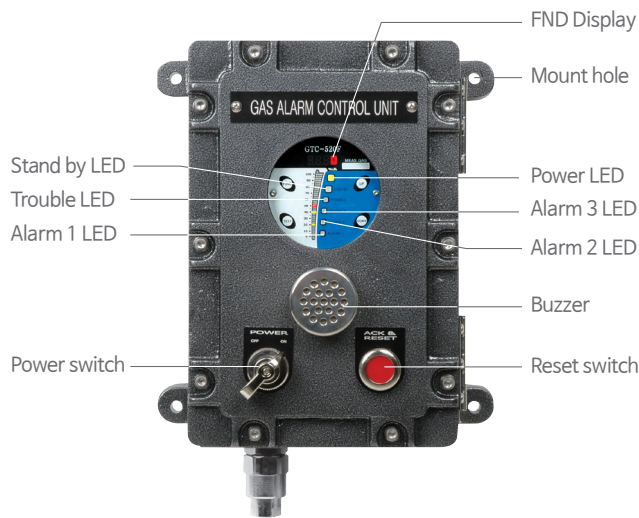
GTC-520F Series

Feature

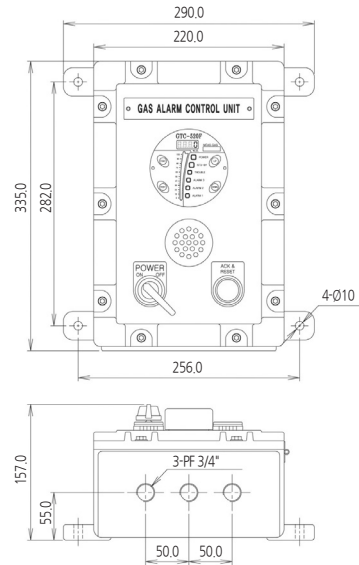
- ▷ Usable in explosion hazardous area with flame proof structure
- ▷ Connectable with various types of gas detectors
- ▷ Easy installation with a wall mount type
- ▷ Gas concentration display with 4-digit & Bar-graph (32 segment, 3-color LED)
- ▷ 3-color display according to alarm stages (Green, Yellow, Red)
- ▷ 3-stage alarm, 1-trouble LED display and relay contact output
- ▷ Easy configuration of monitoring system with RS-485 Modbus isolated serial data communication (Option)
- ▷ Programmable alarm setting (Level, Time delay)
- ▷ Peak hold
- ▷ Self diagnosis



General



Dimension (Unit:mm)



Accessories



RS-485
Communication Module



Cable gland

Specification

※Specifications are subject to be changed without prior notice.

EXPLOSION PROOF TYPE TYPE GAS DETECTOR RECEIVER GTC-520F SERIES	
Model	GTC-520F
Operation display	6-LED (Power, 3-stage alarm, Trouble, Stand-by)
Measuring display	4-Digit FND & Bar-graph
Measuring range	1-9999(programmable) / %LEL, ppm, %Vol
Alarm display	Visual 3-stage alarm, Trouble LED Audible : buzzer
Alarm output signal	3-Stage Alarm, Trouble / AC250V 5A relay contact (SPDT) Shut-off valve control signal (DC 12V)
Alarm level set	Programmable within detection range
Input signal	4-20mA DC (2-wire or 3-wire)
Output signal	4-20mA DC
Reset signal	RS-485 Communication Modbus(option) Reset switch and remote control
Program set mode	Alarm value (1, 2, 3 alarm) Alarm time (instant & delay) 1~30min Alarm dead band Relay output on/off
Operating temperature	-20°C ~ +60°C
Operating humidity	5~99%RH(non-condensing)
Operating power	Standard : AC90V~250V / 12W max 24V DC (Option) / 280mA max
Dimensions	290x347x137 (WxHxD)mm
Weight	12kg
Approval	Explosion proof type (Ex d IIB+H2 T6 IP65) KCs