

Gas Monitoring System

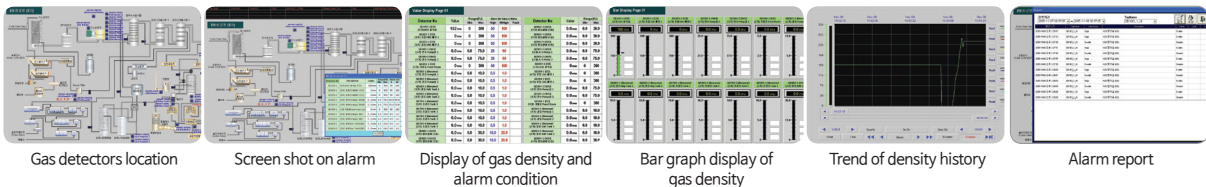
GMS-2000

Feature

- ▷ Integrated management of all gas detectors with one graphic
- ▷ Easy configuration with low cost by serial data communication (RS-422 or RS-485 Modbus)
- ▷ Easy output configuration on alarm (by group or single)
- ▷ Display switch to a trouble point screen when alarm is occurred
- ▷ Possible to check logged alarm history
- ▷ Real time logging data
- ▷ Easy expansion by serial port
- ▷ Ethernet applicable



Touch screen display



Gas detectors location

Screen shot on alarm

Display of gas density and alarm condition

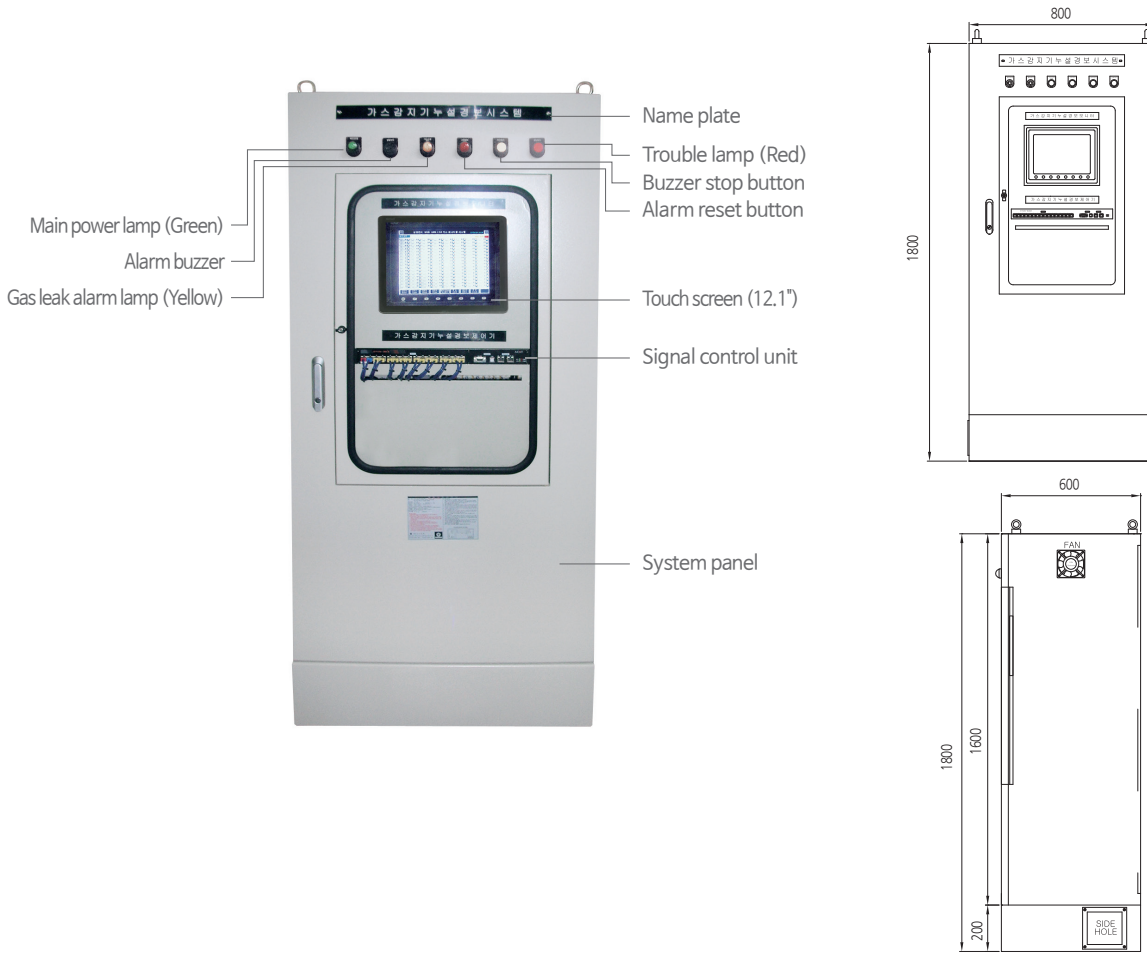
Bar graph display of gas density

Trend of density history

Alarm report

General

Dimension (Unit:mm)



Specification

※Specifications are subject to be changed without prior notice.

GAS LEAK MONITORING PANEL	
Model	GMS-2000
Measuring gas	Flammable gases & Toxic gases
Measuring range	0~100%LEL OR 9999 PPM
Alarm level set	Programmable within detection range
Normal display	Green lamp on
Trouble display	Red lamp on (Touch Screen) & buzzer, External red lamp on
Hi alarm display	Yellow lamp on (Touch screen) & buzzer, External yellow lamp on
HiHi alarm display	Yellow lamp on (Touch screen) & buzzer, External yellow lamp on
Input/Output signal	Input : RS-422/485 13 Port Output : RS-422,485, Ethernet 2 Port Speed : 1200, 2400, 4800, 9600, 19200 bps
Relay contact	Trouble, Hi/HiHi alarm : Relay dry contact (Option)
Operating temperature	-20°C ~ +40°C
Operating humidity	5 to 95% RH (Non-condensing)
Operating power	AC220V 60Hz 8 channel - Max 250W / 32 channel -Max 400W / 64 channel-Max 600W 128 channel - Max 1KW / 208~260 channel-Max 1.5KW
Dimensions	800 x 1800 x 600 (W x H x D)mm
Approval	KFI(AC220V, Separated type, Industrial, Immediately warning, Infrared, Diffusion, LNG) KFI, CCCF