

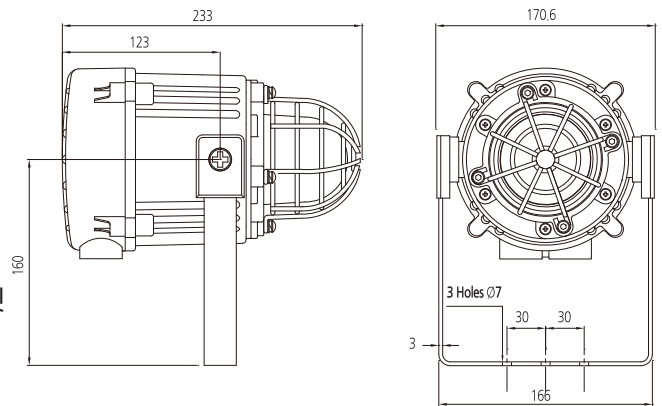
비방폭형 제논 스트로브 경광등

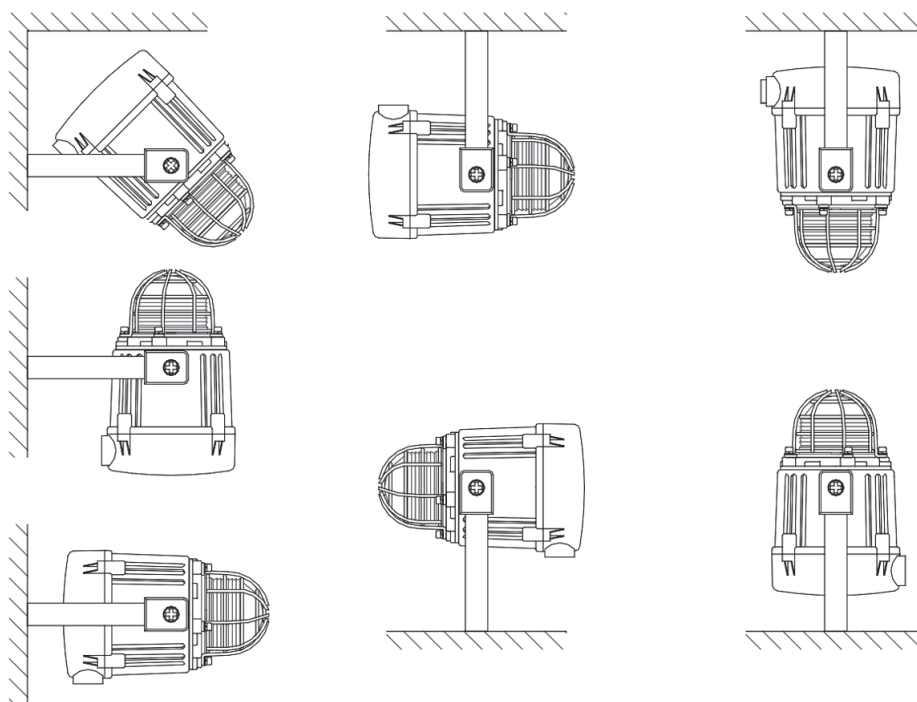
MB005

Dimension (Unit:mm)

제품의 특징

- ▷ 자동 동기화 플래시 또는 'flip-flop' 전환 모드
- ▷ 진동으로부터 안전한 제논 튜브
- ▷ 안정적인 속도 유지
- ▷ 스테인리스 스틸 고정대
- ▷ 360도 위치 선정을 위한 조정 가능한 스테인리스 스틸 'U' 브라켓
- ▷ 듀플리킷 케이블 터미네이션 (데이지 체인 설치를 위한 in&out)
- ▷ 열대지방 기준에 적합





Specification

Energy	5 Joules (5Ws)
Flash rate	1Hz (60 fpm)
Peak candela	500,000 cd - calculated from energy (J)
Effective intensity cd	250 cd - calculated from energy (J)
Peak candela	16,428 cd* - measured ref. to I.E.S.
Effective intensity cd	51 cd* - measured ref. to I.E.S.
Lens colours	Amber, Blue, Clear, Green, Red & Yellow
Voltages DC	12VDC; 24VDC; 48VDC
Voltages AC	115VAC; 230VAC
Ingress protection	IP66 & IP67 (Third party tested)
Housing material	High impact UL94 V0 & 5VA FR ABS
Colour	Grey (RAL7038)
Cable entries	2 x M20 supplied with 1 blanking plug
Lens material	Borosilicate glass dome with PC prismatic lens cover.
Guard	Stainless Steel dome guard as standard
Terminals	0.5 to 4.0mm ² cables.
Operating temp	-25°C to +55°C
Storage temp	-40°C to +70°C
Relative humidity	90% at 20°C
Weight	1.48kg
* Candela measurements representative of performance with clear lens at optimum voltage.	

Part codes

VERSION	PART CODE
12V dc	MB005DC12G-[xx]
24V dc	MB005DC24G-[xx]
48V dc	MB005DC48G-[xx]
115V ac	MB005AC115G-[xx]
230V ac	MB005AC230G-[xx]
[xx] = Lens colour AM: Amber, BL: Blue, CL: Clear, GN: Green, RD: Red, YW: Yellow	

Also available as the MCA112-05 combined alarm sounder and Xenon beacon and the MCL15-05 15W PA Loudspeaker with Xenon beacon.

Current consumption

Version	Voltage	(Current)
12V dc	10-14V dc	(750mA)
24V dc	20-28V dc	(270mA)
48V dc	42-54V dc	(180mA)
115V ac 50Hz/60Hz	±10%	(140mA)
230V ac 50Hz/60Hz	±10%	(55mA)