

G-geumgang Co., Ltd

Transplanting MULTI-SEEDER

MANUAL

TITLE : KDS-08MS



Introduction

Thank you for purchasing the Multi-Seeder from G-geumgang Co., Ltd.

This instruction manual describes in detail how to operate and handle the Multi-Seeder. Read the instructions carefully before using the device and use it to obtain the best performance and comfortable working conditions. G-geumgang Co., Ltd. will continue its research in order to produce the best and most convenient and safe products.

CEO KIM, Sik

G-gemgang Co., Ltd

[Features of Transplanting Multi-Seeder]

- ▶ According to seed and region condition, it can be used Hill-seeding and Drill-seeding. Compare to other products, it is more useful.
- ▶ It is efficient and easy to seed by user can choose seeding-method.
- ▶ It has a side manuring device attached to it to bury the chemical fertilizer in the ground. It can also reduce amount to about one-third of the fertilizer quantum.
- ▶ For prevent the case of planting multi-seed lifted high, a side fertilizer mast is detachable, you can make stable position.
- ▶ It can be used both in wet and dry paddy fields, and can also be used to seed field crops (barley, bean, corn, wheat, etc.).

[Contents]

1. General Caution	5
2. Inspection item before & after work	6
3. Specifications	7
4. Name of parts	8
5. Using tips and name of components	12
6. Adjustment of discharge quantum (Seed and Fertilizer)	18
7. Quality Certification	22
8. Cause of disorder and Solution	24

[List of Parts]

※ Main structure

A. Name of Each part	27
B. Layout for Main power transmission	28
C. Layout for Line draw marker	30
D. Layout for Block the soil overflow	31
E. Layout for Float	32
F. Layout for Seed plank drag	33
G. Layout for Rake device	34
H. Layout for row-volume controller	37
I. Layout for Multi discharge device	38
1) Arranged connection	
2) Multi discharge device	
3) Multi discharge device connection	
J. Layout for Nameplate	40
K. Layout for Seedbox	41
1) Seedbox connection	
L. Layout for Fertilizerbox	43
1) Fertilizerbox connection	
M. Layout for Driving wheel	45
N. Layout for Bevel gear(Top)	46
O. Layout for Bevel gear(Bottom)	47
P. Layout for Double gearbox	48
Q. Safety decal panels	49

1. General Caution

1) Before using a sower, be sure to check sower condition.

☞ Check point : ~~Engine-oil, belt, break, handle, wheel~~ etc.

2) Attach a sower to a tractor, stop the engine by all means, and then inspect it.

3) After attached transplanting multi-seeder, please check all conditions.

4) Before working, be sure to check whether there is an abnormality in the joint connected to the rice-planting machine and sower.

☞ Before attachment, check whether there is an abnormality in the joint, and after attachment, check whether there is an abnormal noise while operating it at a low speed, and then do work.

5) Get rid of foreign substance in the entrance of plank drag, please maintain smooth condition.

☞ If foreign substance enters a seedbox, it has possibility of losing seed.

6) Before working, check for adjusting-lever is on position, and then all emission parts will be operating.

7) For sowing, use a carefully selected and good fruit giving seed.

8) After using a sower, be sure to clean each discharger certainly.

9) Please keep in shade and dry place. In a bright and humid place, it can be possible problem. (transformed, twisted, etc)

2. Inspection Item before and after Work

- 1) Check whether there are foreign substances, etc. in each discharger, and take measures.
- 2) Be sure to apply grease to each rotating part(joint, axis, etc.) before and after use in order to prevent corrosion and damage.
- 3) Before working, be sure to check line draw masts are working.
☞ By working condition, the length of wire will be changed.
- 4) Check proper ranged angle of adjusting float.
- 5) For prevent damaged machine at the edge of Rice paddy, please set up Block the soil overflow.
- 6) Please fold a line draw mast, when you driving.

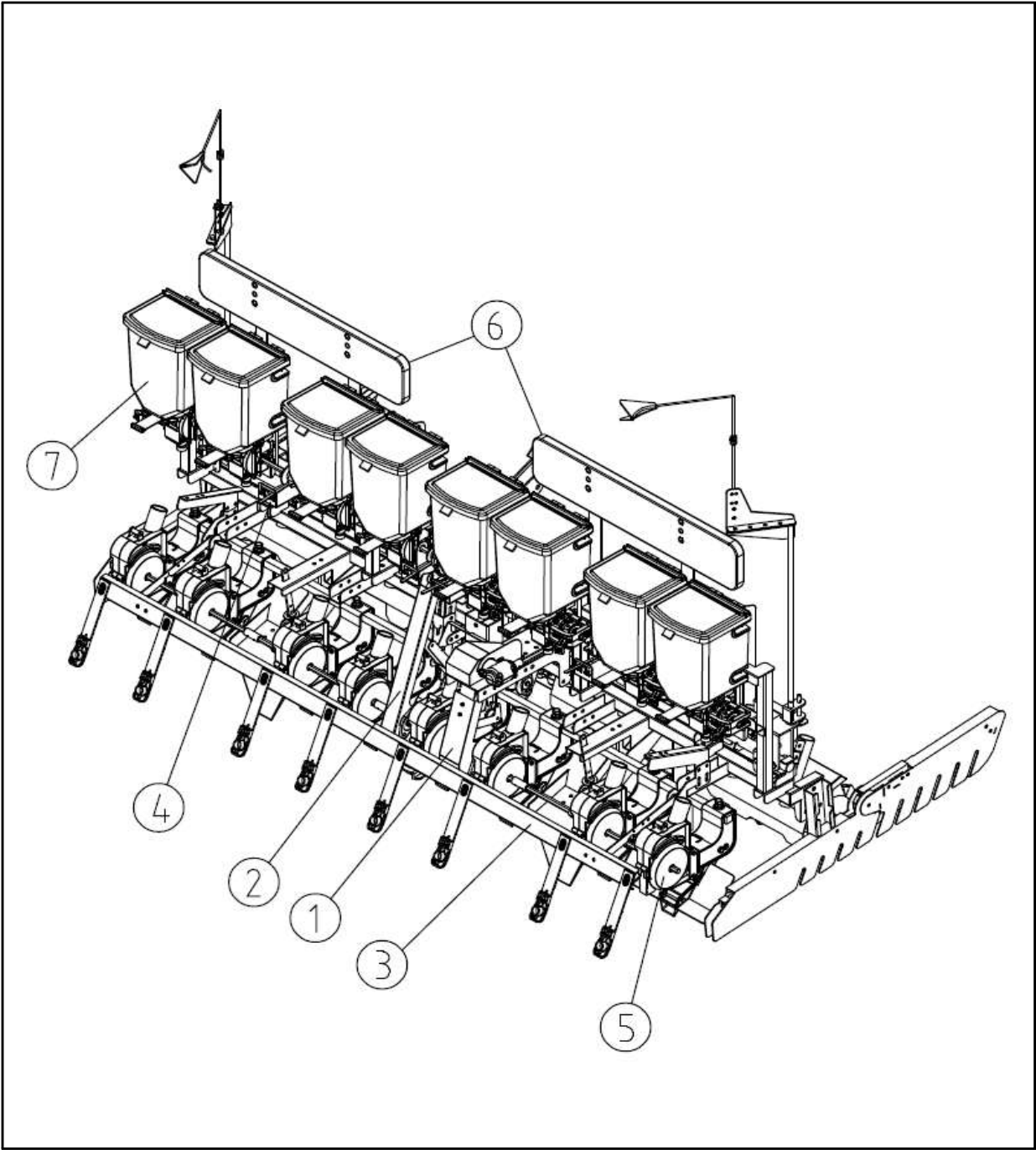
3. Specification

1) A Transplanting Multi-Seeder

Title	Transplanting Multi-Seeder	
Kinds of machinery	KDS-08MS	
Size	Seed sow part	Side fertilizer part
Length (mm)	1188	621
Depth (mm)	2290	2140
Height (mm)	1046	970
Weight (Kg)	180	143
Number of Seed boxes	8 boxes	
Capacity of seed hopper (Kg)	5 Kg*8box = 40 Kg	
Capacity of fertilizer box hopper(Kg)	10 Kg*8box = 80 Kg	
Regulation form for the quantity of sowed seeds	Slide roller home Method	
Roller running form for the seed dropping	Roller running form by drive shaft	
Length of row (mm)	235 ~265	
Sowing width(mm)	2200	
Available Model	A Transplanting Multi-Seeder (at least 12HP)	
Seeding Form	Hill seeding, Drill seeding	

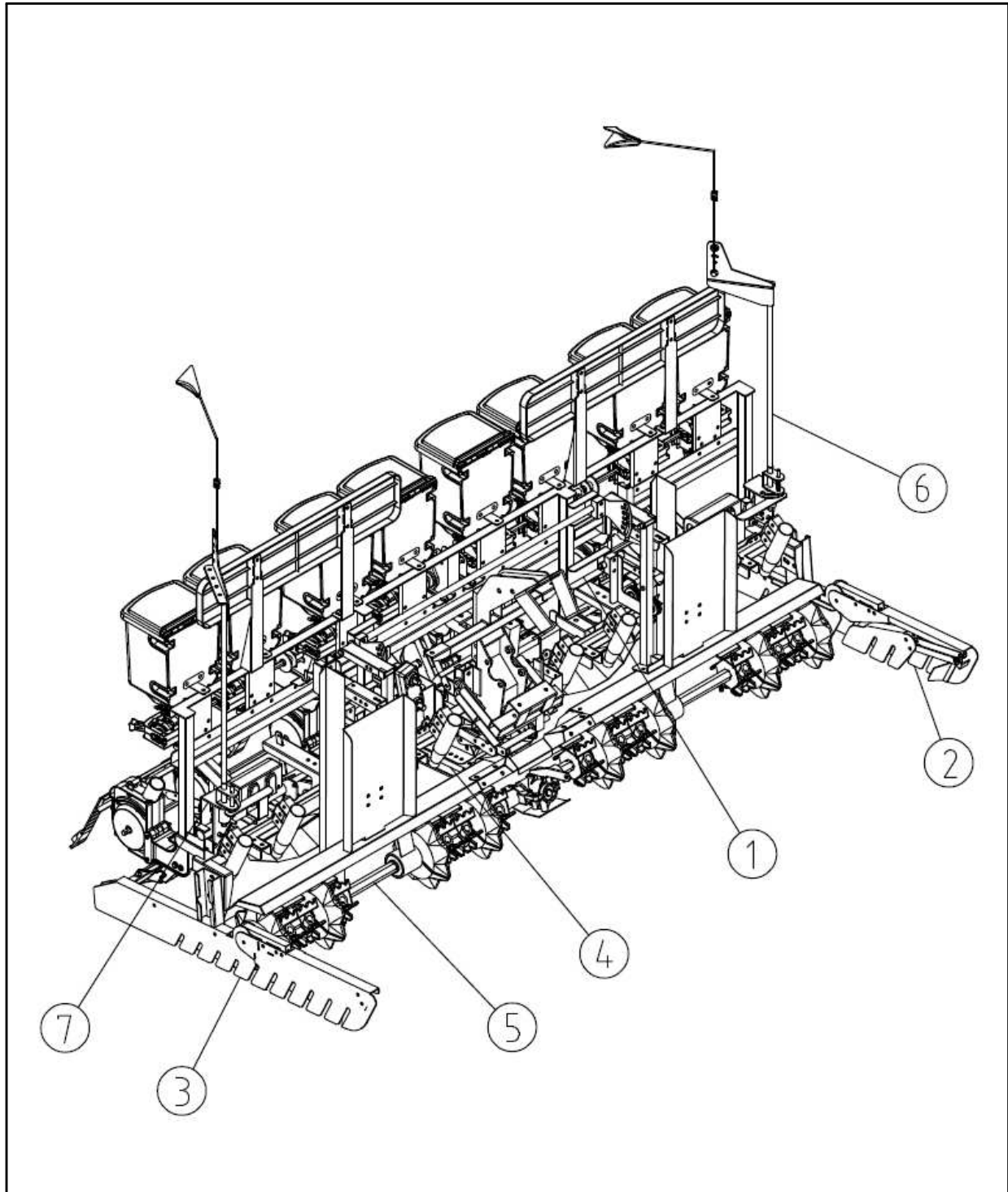
4. Name of Parts

1)Seeding Parts, Main constitution - front



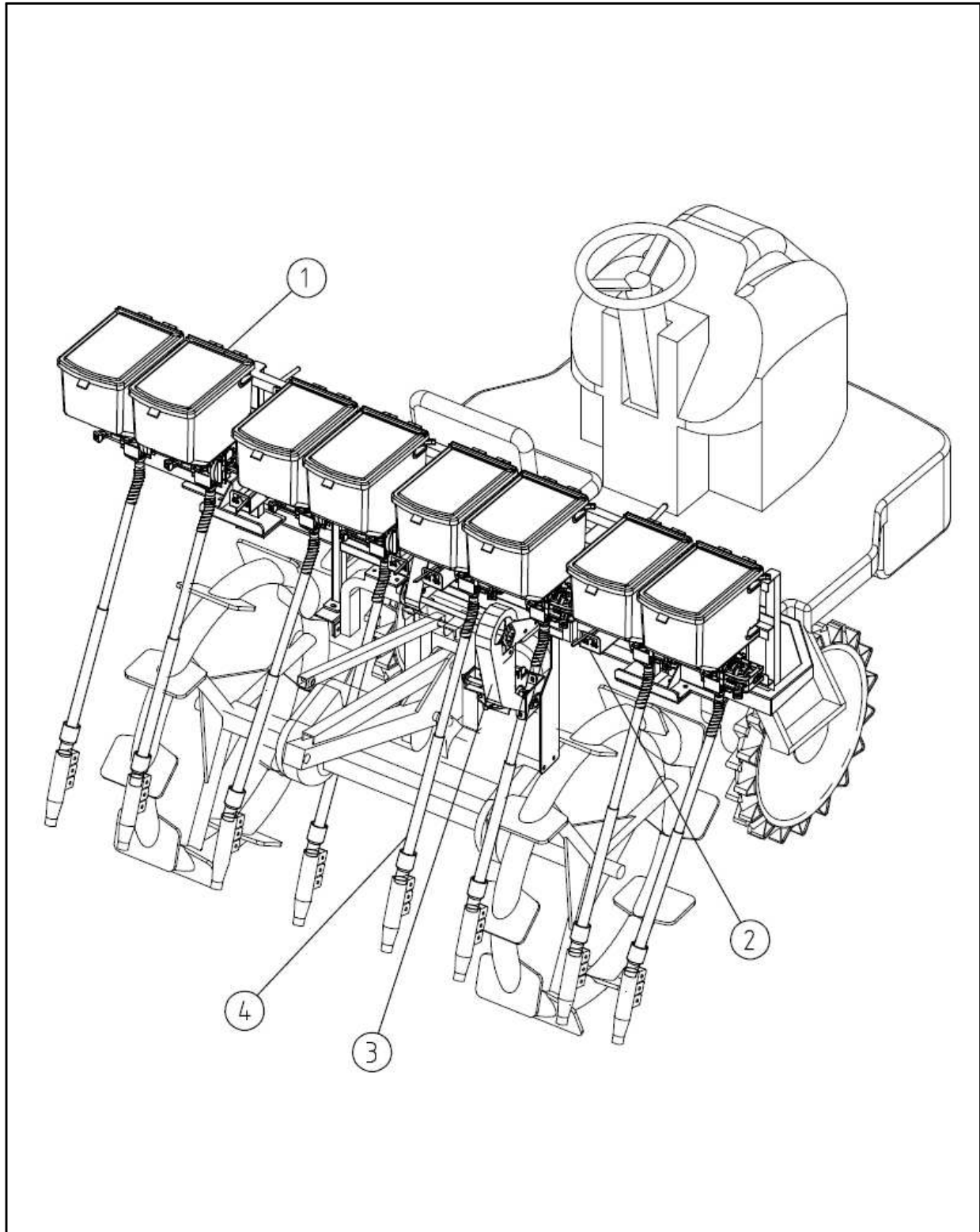
NO	Reference page	Name of Parts	Quantity	Note
1		Main power transmission		
2		Upper power transmission		
3		Seed plank drag		
4		Row quantum control device		Equal Seed and fertilizer part
5		Multi discharge device		
6		Nameplate		
7		Seedbox and discharger		

2)Seeding Parts, Main constitution - rare



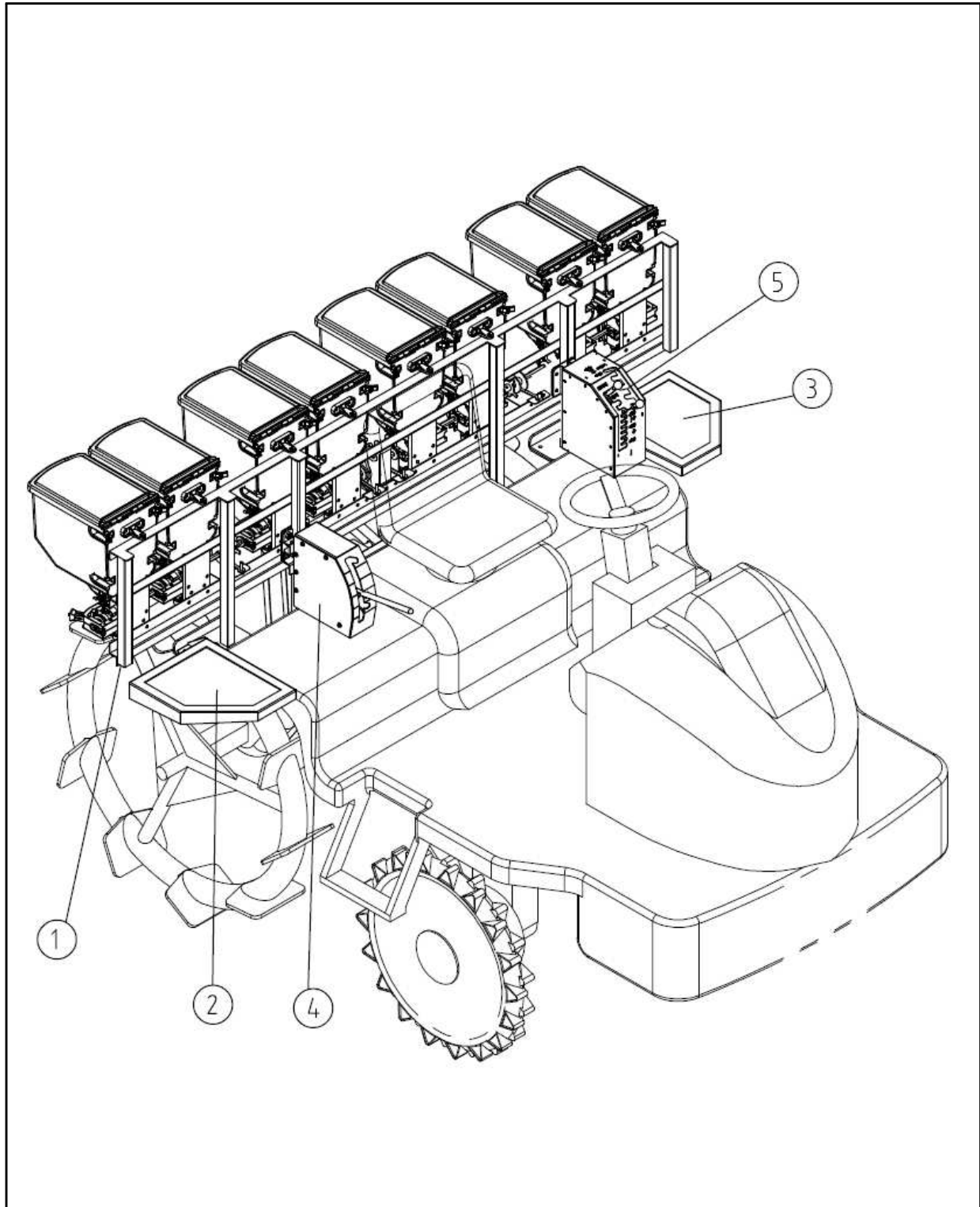
NO	Reference page	Name of Parts	Quantity	Note
1		Main frame		
2		Block the soil overflow-Left		
3		Block the soil overflow-Right		
4		Float		
5		Rake device part		
6		Line draw marker - Left		
7		Line draw marker - Right		

3)Side manuring parts, Main constitution - front



NO	Reference page	Name of Parts	Quantity	Note
1		Seedbox and discharger		
2		Row quantum control device		Equal Seed and fertilizer part
3		Power transmission		
4		Fertilizer pipe		

4)Side manuring parts, Main constitution - rare



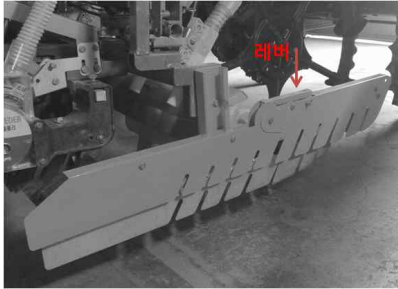
NO	Reference page	Name of Parts	Quantity	Note
1		Main frame		
2		Sub foothold - Left		
3		Sub foothold - Right		
4		Seed plank drag lever		
5		Rake, float lever		

5. Using tips and name of components

1) Usage of Block the soil overflow

Device outline : It minimizes the overflow soil to the outside when you sowing in a wet field. Normally, Position is putting down the lever like **picture1**.

(Tips) It can be happen damaged machine when you working on a ridge between rice field. Please fold a front side like **Picture2**.



Picture 1



Picture 2

2)Usage of Line draw marker

Device outline : Line draw marker is device for informed next working area.

(Tips) When you driving a rice machine, for preventing accident, Please push the button like **Picture4** and fix Line draw marker.

◦When you seeding, make line draw marker like **Picture3**, choose left or right side, then marker descends on choosing side.



Picture 3



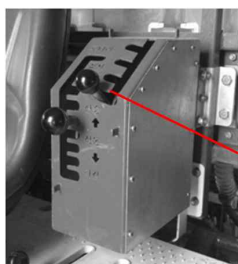
Picture 4

3)How to Use and control of Float

(1) Usage : If you control for height of rice machine, you can control by lever like **Picture5**.

Ex) ① User can control height of machine freely and control it each condition.

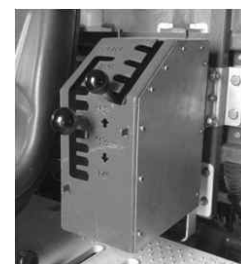
② Too dry field, descending proper height.



Picture 5



FLOAT Control lever Use

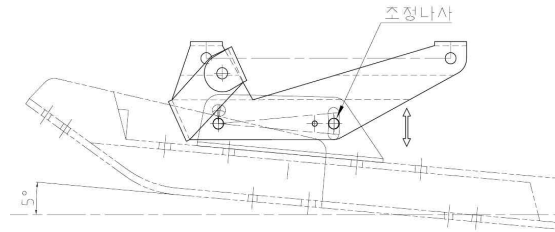


FLOAT Control lever non-use

(2) Angle control :

Unfasten fixed-screw
and adjusting angle for using
and fixing screw again.

(Picture 6)



Unused FLOAT Control lever

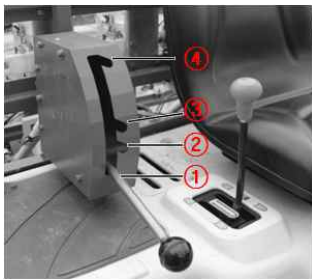
5) Seed plank drag control lever

◦Device outline : Seed plank drag makes seed for sticked on ground and more moisture and make germination rate high.

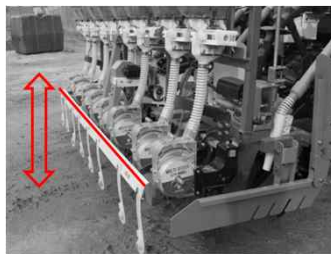
***Caution :** Don't use this method in too wet field, It can be happen buried too deep in ground, make germination percentage low.

◦Control

Control lever has four steps. First : full down,
Second : middle down, Third : a little down,
Fourth : full up.



Control lever



Seed plank drag



Proper seeding position

6) Usage of Rake

Device outline : It equalizes surface of crop field.

◦Usage

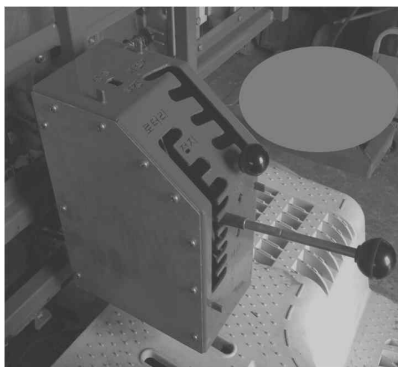
- (1) In normal field condition, rake be located like **Picture3** and lever be located **Picture2**.
- (2) Choose lever position according to field condition like **Picture1**.
- (3) Solution in emergency : If you can't control height of rake, Please use fixing-pin like **Picture3**.

※ Caution : 1) Please set up proper height for rake.

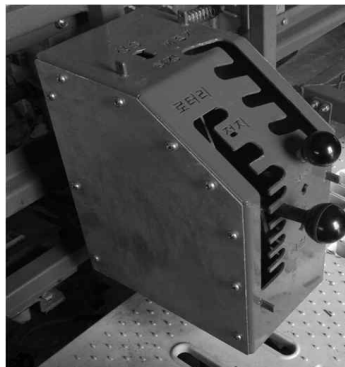
2) Possible problem

Too low position - It is possible rake propelled soil.

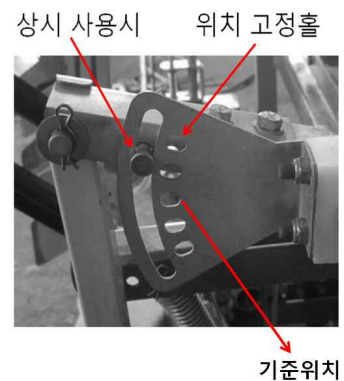
Too high position - It is possible rake float beneath ground.



Picture 1



Picture 2



Picture 3

7) Adjusting Length of Row

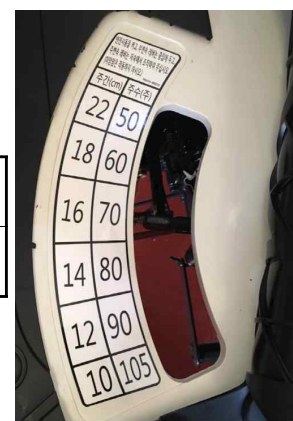
◦By using Length of row controller, can control rotation speed of discharge device.

◦ Range of length of row control(ERP 60D standard)

(measure unit : cm)

rice planting machine	10	12	14	16	18	22
Sower	10	12	14	15	18	21

※It would be gap by condition of field and wheel.



8) Operate to seed/fertilizer discharge device

◦Device outline : It is working by lever, slide roller home, it makes regular quantity of seed/fertilizer discharge. To adjust the discharge amount, turn the adjustment nut, and then a 2mm interval change per rotation takes place.

☞ Discharge amount range: Minimum 5 ~ maximum 30mm

※ Caution : ① Don't Push or pull obstinately.

② Make brush stick to working.

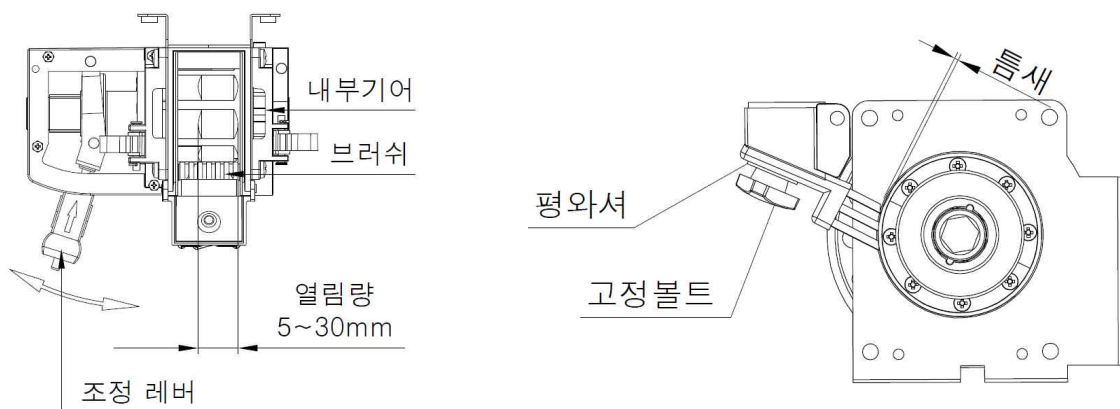
☞ Proper space of brush and roller is 0~0.3mm.

It can control by push lever and fix a bolt.

③ If you find defection of brush, replace new one.

※ Reason : If brush and roller have space expanded,
it can be possible wasting Seed and fertilizer.

④ Please put flat-washer when you fix bolt.



Discharge controller of Seed/Fertilizer

9) Sensitivity Controller

◦Device outline : It is interior device in rice-planting machine. it works getting balance of rice-planting machine in crop field.

- ① Wet and muddy field - Lever go to low number(up).
- ② Dry field - Lever go to high number(down).



10) Multi discharge device

◦Device outline : It can make choosing Hill-seeding or Drill-seeding.

◦Usage

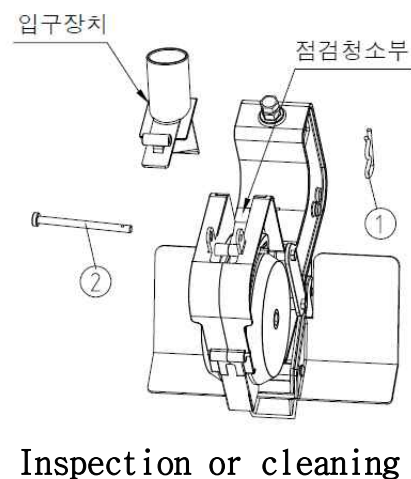
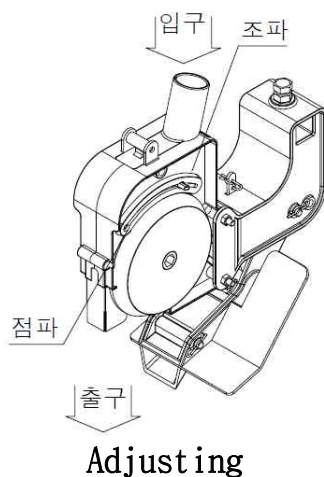
- Hill-seeding : Push controller and fix to Hill-seeding.
- Drill-seeding : Push controller and fix to Drill-Seeding.

※ Caution

When using a seed containing powder components(e.g. iron coating, etc.), clean the machine cleanly after using it. Keeping the machine in custody for a long time without cleaning it can cause adherence and disable the adjustment work

◦Inner cleaning

Remove pin ①·② and Push the entrance component and cleaning.



11) How to exchange a sesamoid

- Device outline : This device is provided with two basic kinds of furrow openers as a device devised to easily exchange and use a furrow opener

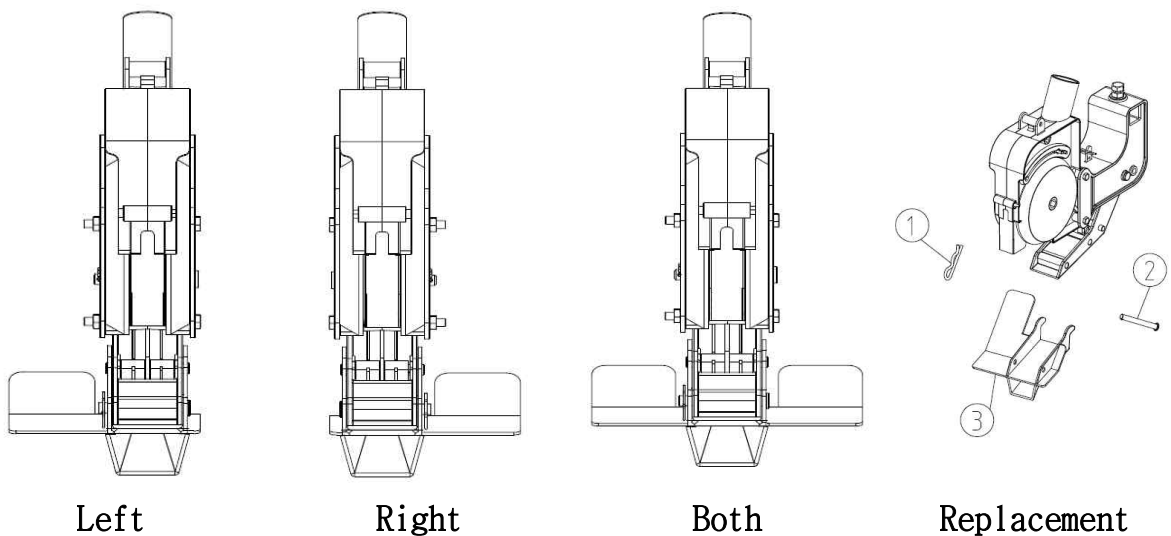
◦(1) How to exchange a furrow opener

- Remove the Holding-PIN(No.①&②).
- Exchange the furrow opener.
- Fix the Holding-PIN(No.①&②).

※Note : Furrow has L-type / R-type symmetry. Other furrow is a double-bladed type.

When you adapting furrow(L/R type), make a position to adapting-direction.

※Cause: It possible to leave a fixed-pin and lose a furrow.



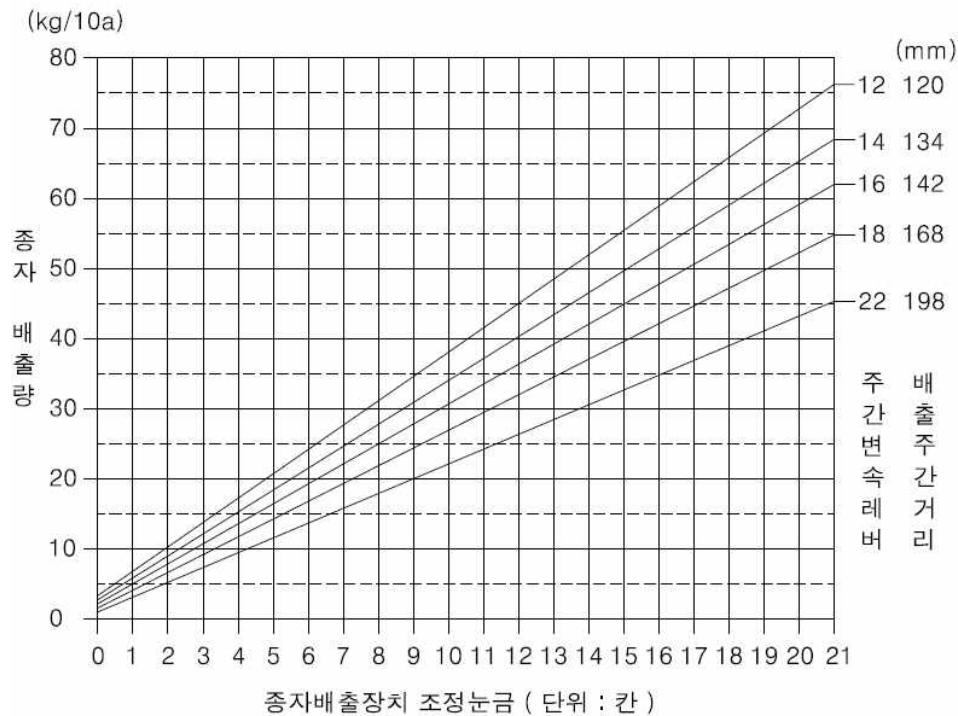
12) Check before Seeding

- Seed select / sprout
 - ①Please filter out impurities.
 - ②Please sterilize rice-seedbed when sprout "1mm" length.
 - ③Please natural drying in dry place until seeding.

6. Control of discharge quantity (Seed and Fertilizer)

(1) Discharge quantity - Seed/Fertilizer Relation.

1. Discharge seed quantity - Reference graph



(★) According to the type and condition of the seed to planting, Please should check and compare the seed emissions

2. Discharge seed quantity - Reference table

(Emission Unit : kg/10a)

Interval	Discharger adjusting gradation										
	1	3	5	7	9	11	13	15	17	19	21
12	7	14	21	28	35	42	49	55	62	69	76
14	6	12	18	25	31	37	43	50	56	62	69
16	5	11	16	22	28	34	39	45	51	56	62
18	4	9	14	19	24	30	35	40	45	50	58
22	3	7	12	16	20	24	29	33	37	41	45

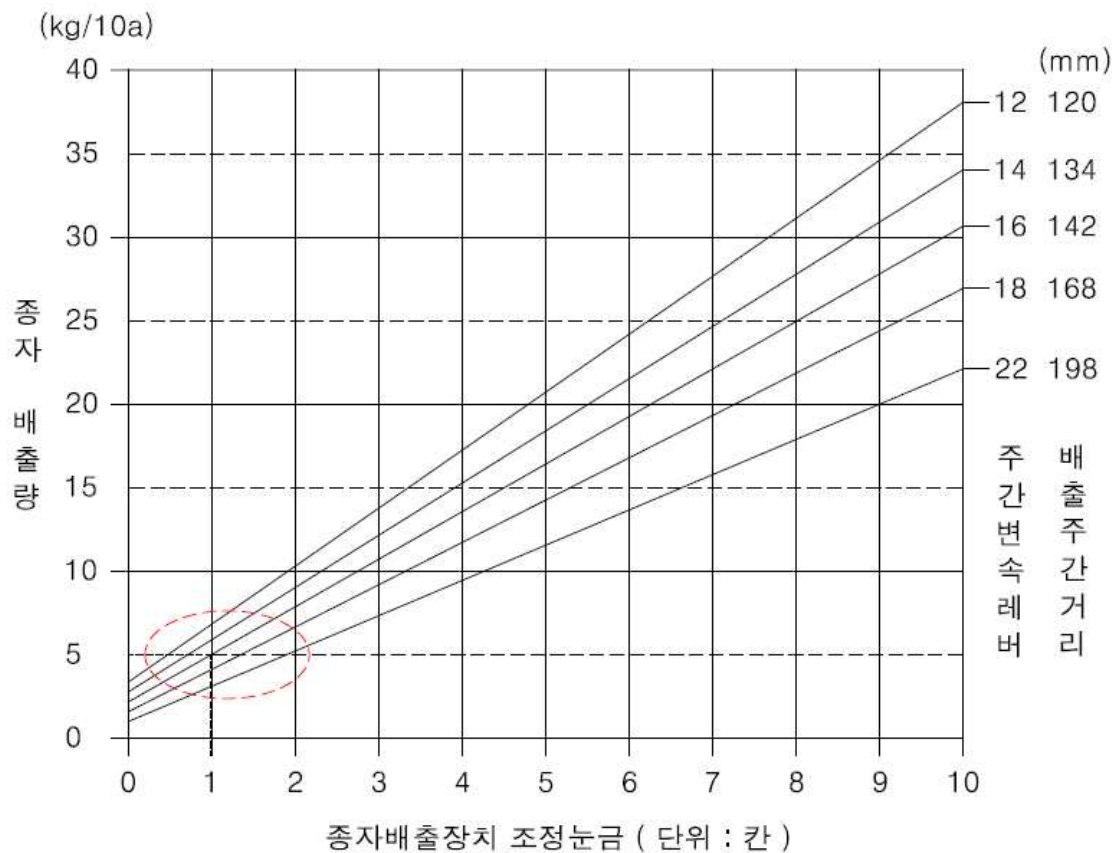
3. Reference for Table

1) Testing Seed

- (1) Kind of Seed : Japonica rice
- (2) Size : L: 6.8 * W:3.2 * H:2.2 (mm)
- (3) Weight : 0.6~0.8 (g/ml)

4. How to analyze Discharge seed quantity - Reference graph

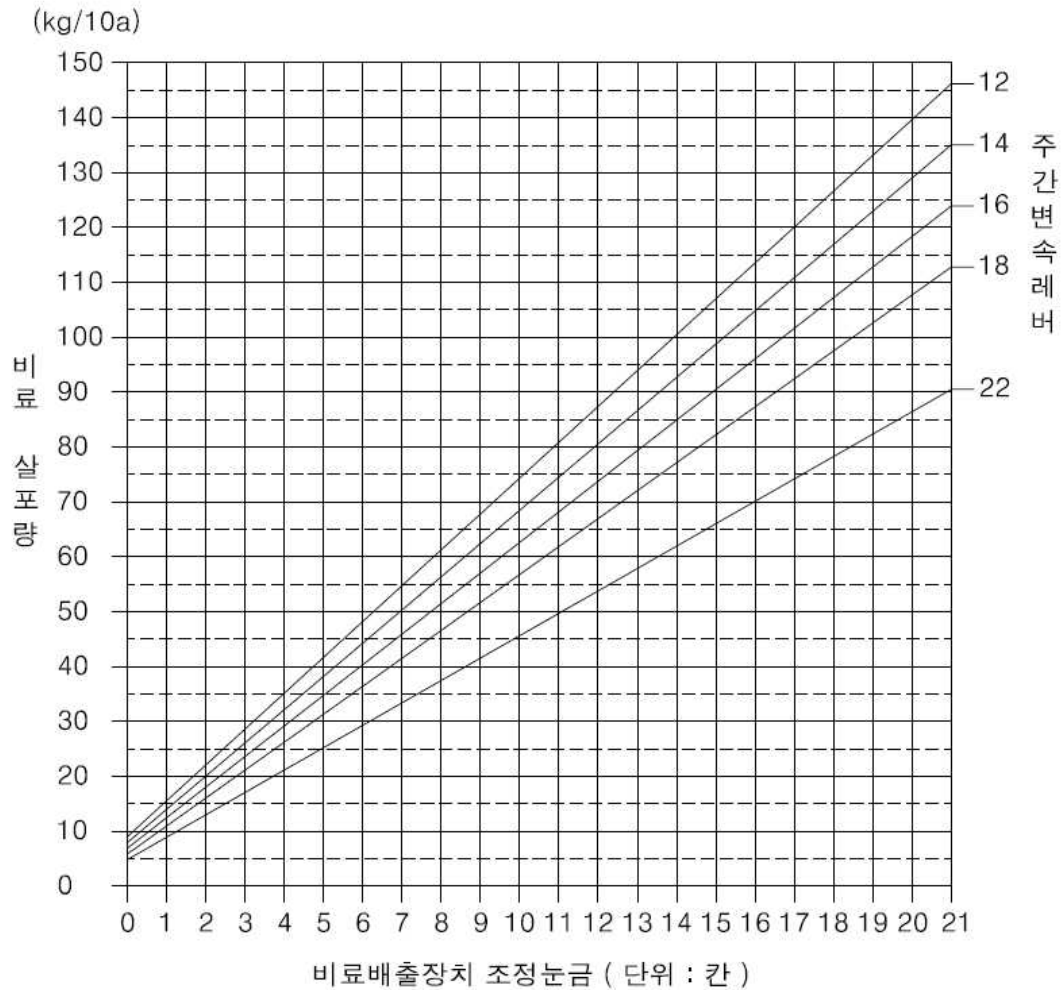
4-1. Normal range for Rice seeding



4-2. Set-up Range for rice seeding

- 1) Rice seeding (Standard - Field : 10a / Seed quantity : Max 5kg)
 - : ①Adjusting Seed-discharger on 0~2 level.
 - ②Adjusting length of row-change-lever on 16.
- 2) Reason for setting length of row-change-lever on middle point
 - : Actual emissions by planting when changes occur that increase or decrease depending on the condition and type of seeds, the amount set by adjusting when necessary, possible to use the lever.

5. Discharge Fertilizer quantity - Reference graph



(★) According to the type and condition of the seed to planting, Please should check and compare the seed emissions

6. Discharge Fertilizer quantity - Reference table

(Emission Unit : kg/10a)

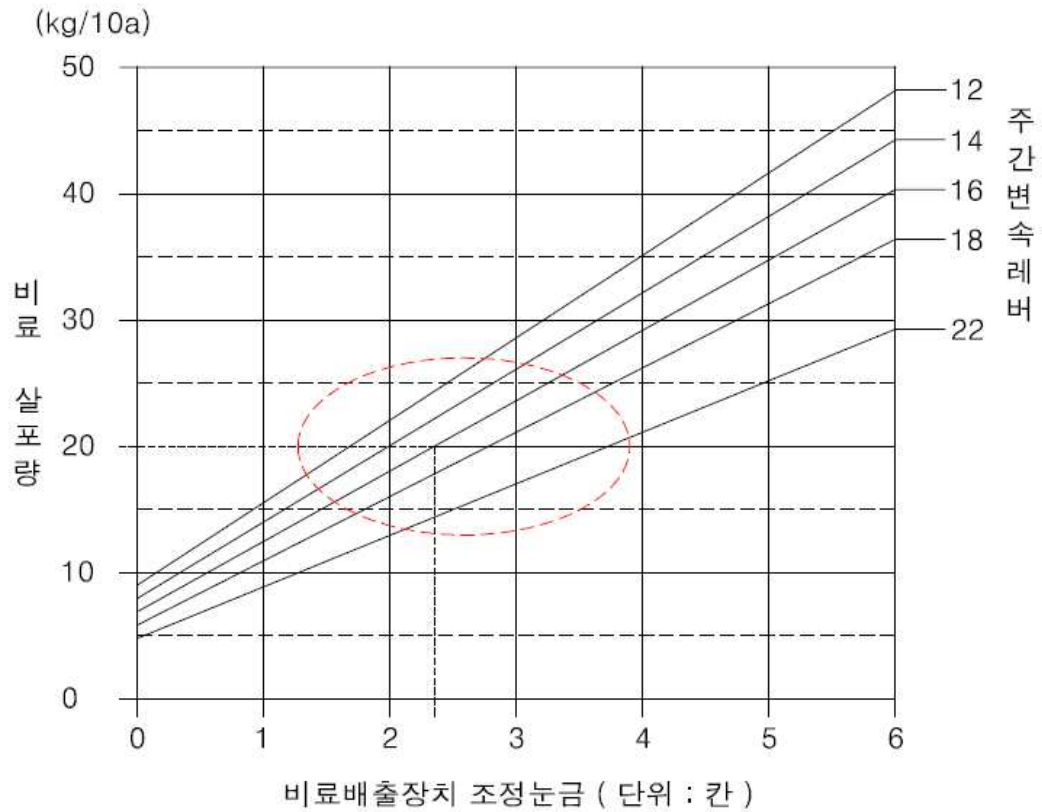
Interval	Discharger adjusting gradation										
	1	3	5	7	9	11	13	15	17	19	21
12	16	29	22	55	68	81	94	107	120	133	146
14	14	26	38	50	62	75	87	99	111	123	135
16	13	24	35	46	57	68	79	91	102	113	124
18	11	21	31	42	52	62	72	82	92	103	113
22	9	17	25	33	42	50	58	66	74	82	91

7. Reference for Table

1) Testing Seed

- (1) Kind of Fertilizer : General composited fertilizer
- (2) Size : $\varnothing 2 \sim 4.5$ (mm)
- (3) Weight : $0.9 \sim 1.3$ (g/ml)

8. Normal range for Fertilizer



8-1. Set-up Range for Fertilizer

- 1) Rice seeding (Standard - Field : 10a / Fertilizer quantity : Max 20kg)
 : ①Adjusting Fertilizer-discharger on 2~3 level.
 ②Adjusting length of row-change-lever on 16.
- 2) Standard position of change-lever is a cross point with
 discharger of adjusting gradation.

7. Quality Certification

품 질 보 증 서

제 품 명	승용 동력 파종기		
제 품 번 호		형 식	KDS-08MS
구 입 일		보 증 기 간	1년
고 객 명		상 호	
연 락 처		팩 스 번 호	
주 소			
제 조 회 사	(주)지금강이엔지	대 표 이 사	김 식 (인)
전 화 번 호	Tel) 061-393-1755 Fax) 061-393-1757		
주 소	전남 장성군 황룡면 홍길동로 595		

1. 제품의 보증안내

- 저희 (주)지금강 이엔지에서는 품목 별 소비자 피해 보상규정에 따라 제품에 대한 보증을 위와 같이 실시합니다.
- 제품의 고장 발생시 사용설명서를 참고하시고, 기타 문의사항이 있으시면 구입 대리점이나 본사 고객상담실로 연락하십시오.
- 보상여부 및 보증통보는 요구일로부터 7일 이내에, 피해보상은 통보일로부터 14일 이내에 해결해 드립니다.

2. 무료서비스

- 고객께서는 제품사용 중에 고장 발생시 1년 동안 무상서비스를 받으실 수 있는 소중한 권리가 있습니다. 단, 고객과실 및 천재지변에 의한 고장이 발생한 경우는 무상서비스 기간 내에도 유상 처리됨을 알려드립니다.

3. 유료서비스

- 고장이 아닌 경우에 사용설명서를 참조하지 않고 서비스를 요청시
- 소비자의 취급 부주의나 함부로 수리, 개조하여 고장이 발생하는 경우
- 저희 회사에서 미지정된 소모품이나 옵션품을 사용하여 고장이 발생하는 경우
- 사용상 부주의로 인하여 고장이나 손상이 발생하는 경우
- 화재, 수해 등의 천재지변에 의한 고장 발생시



(주)지금강이엔지 www.g-geumgangpia.com
 전남 장성군 황룡면 홍길동로 595
 TEL 061-393-1755 FAX 061-393-1757

『Guarantee for After service』

사후봉사이행보증서 (금융기관 대출용)

인증용
스티커
부착위치

1. 제조 업체명 : (주)지금강이엔지
2. 보증서 번호 : No. M-
3. 보 증 기 간 : 보증기대 판매일로부터 엔진(모터제외) 및 동력전달장치 2년,
그 외 장치 1년간
4. 판 매 일 자 : 년 월 일
5. 기 종 명 세

품 명	형 식 명	수 량	금 액	비 고
승용동력파종기	KDS-08MS	壹	원	• 부가가치세 별도

6. 사후봉사이행보증범위 : 상기농기계를 구입한 자가 사용설명서에 따라 정상적인 관리를 하였음에도 불구하고 발생하는 제작상 결함으로 인한 고장 또는 흠에 대하여 농업기계화촉진법시행규칙 제16조 제2항에서 정한 기간동안 무상수리를 보증하며, 동기간 이후 발생하는 고장에 대하여서는 유상 사후봉사 할 것을 당조합이 보증함.

- *주 ①보증기대 판매일자가 기재되어 있지 않거나 보증서 발급일로부터 1년이 경과된 경우는 보증효력이 없음.
- ② 이 증서의 사본이나 인증 스티커 미부착시 금융기관대출용으로 사용할 수 없음.
- ③ 상기 금액은 제조업자가 제시한 권장소비자가격으로써 업체사정 등에 의해 변경될 수 있음.

위와 같이 사후봉사이행보증을 함.

년 월 일

한국농기계공업협동조합 이사장



8.Cause of disorder and Solution

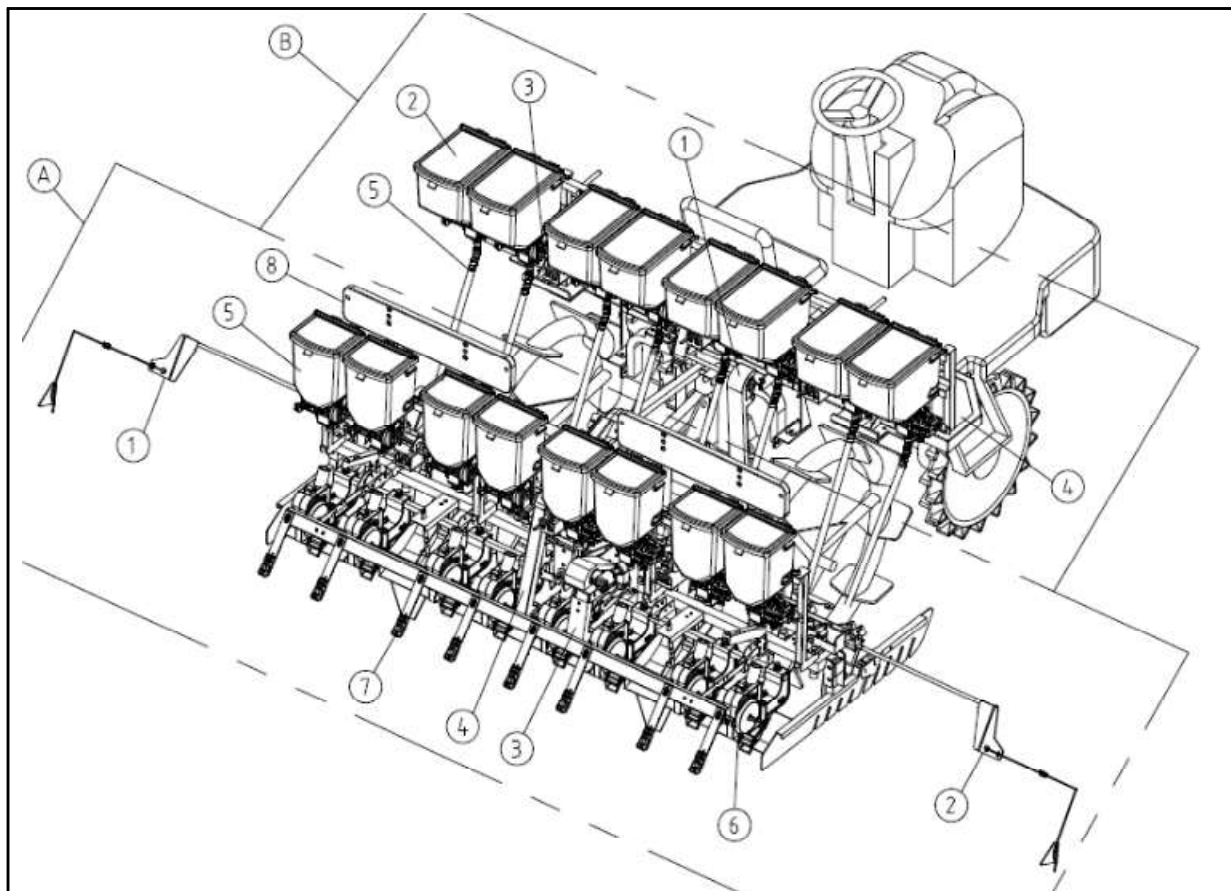
No.	Situation	How to inspect	Solution
1	Disorder discharger-Seed/Fertilizer	Disorder about PTO (Rice-planting Machine)s	Check change-lever a machine or gear-interlocking (Rice-planting Machine)
		Disorder about drive shaft (A sower drive shaft doesn't work)	Check power interlocking between PTO and Sower
		Discharger problem	Check discharger
		Doesn't discharge although discharger is working	Check entrance of discharger or connection
		Accumulated fertilizer(seed) in the pipe	Check edge of discharger entrance
2	A sower propelled soil	Float doesn't work with soil	Adjusting Sensibility of lever in rice-planting machine
		Float contact a lot of soil or put in ground	Adjusting angle of Float ※Standard angle 5° (P. 12)
3	Disorder of Line draw marker	Doesn't operate Marker control lever	Check control-lever in rice-planting machine or connection of actuator
		Rice-planting machine put in ground some, then marker arising	check wire-connection a sower and rice-planting machine How to inspect : Set a sower afloat about 30~35cm and adjusting cable come down to horizontal direction

4	Disorder of Seed plank drag	Plank drag doesn't work while lever working	Check wire-connection
		It's too heavy compare ordinary	Check(Replace) operating buffer-spring
5	Rake is propelled soil.	check rake-lever position	If lever is located beneath, adjusting lever to upside.
		Check sensibility controller of rice-planting machine	Adjusting sensibility lever controller to low number (Soft/wet field)
6	Rake doesn't spin.	Check joint spin function	Replace safety-pin of joint
		Check clutch wire	Adjusting nut of edge clutch wire
7	Unbalance between lever and rake position	Check lever and rake position (They have three steps - Top / Middle / bottom)	Using after fixed standard position
			Working Before and after, Check or adjust connection of lever and rake

Parts List

A. Name of Each parts

1)Full options Installed Layout (Add Side-fertilizer)

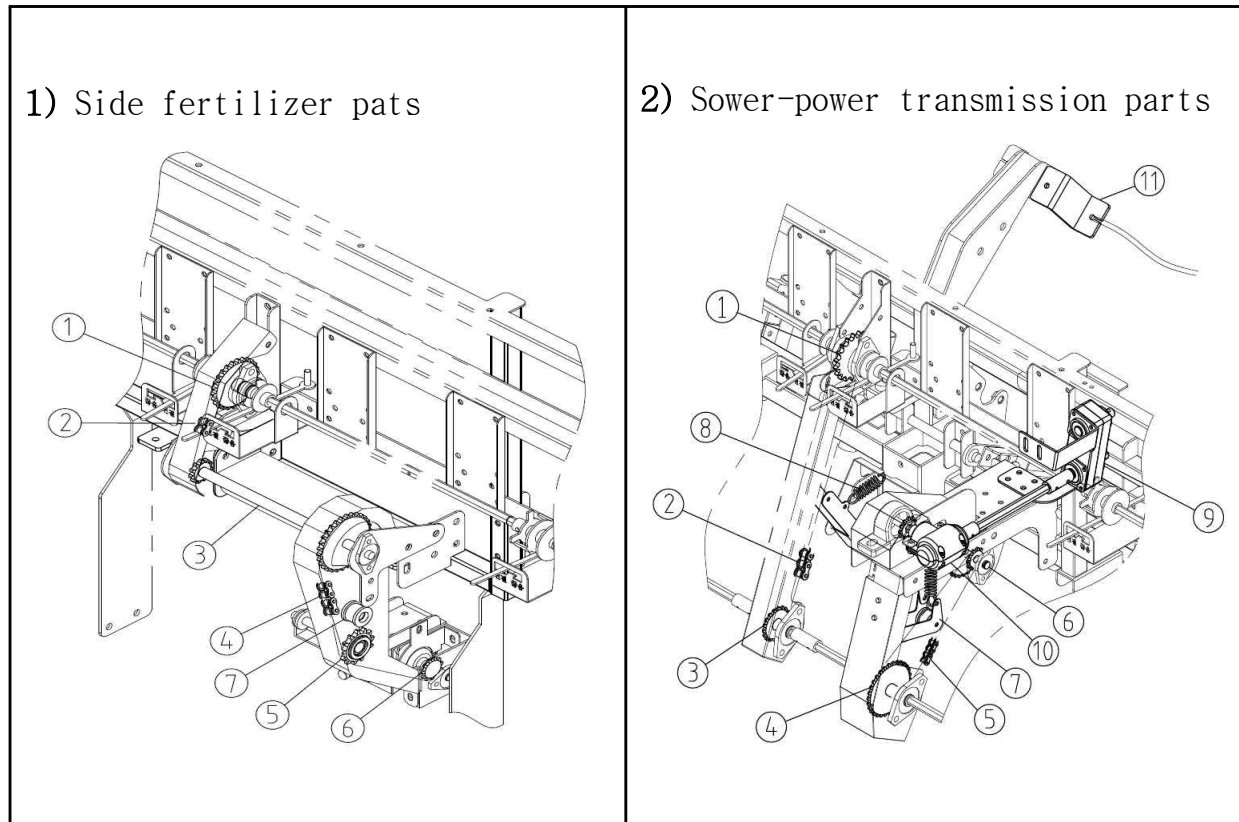


Section	NO	Name of Parts	Related parts	Note
A	1	Line draw marker - Left		
	2	Line draw marker - Right		
	3	Main power transmission		
	4	Upper-power transmission		
	5	Discharger and seedbox		
	6	Multi-discharger		
	7	Seed plank drag		
	8	Nameplate		
B	1	Main power transmission		
	2	Discharger and seedbox		
	3	Sub foothold - Left		
	4	Sub foothold - Right		
	5	Fertilizer pipe		

※Section B is attached to rice-planting machine.

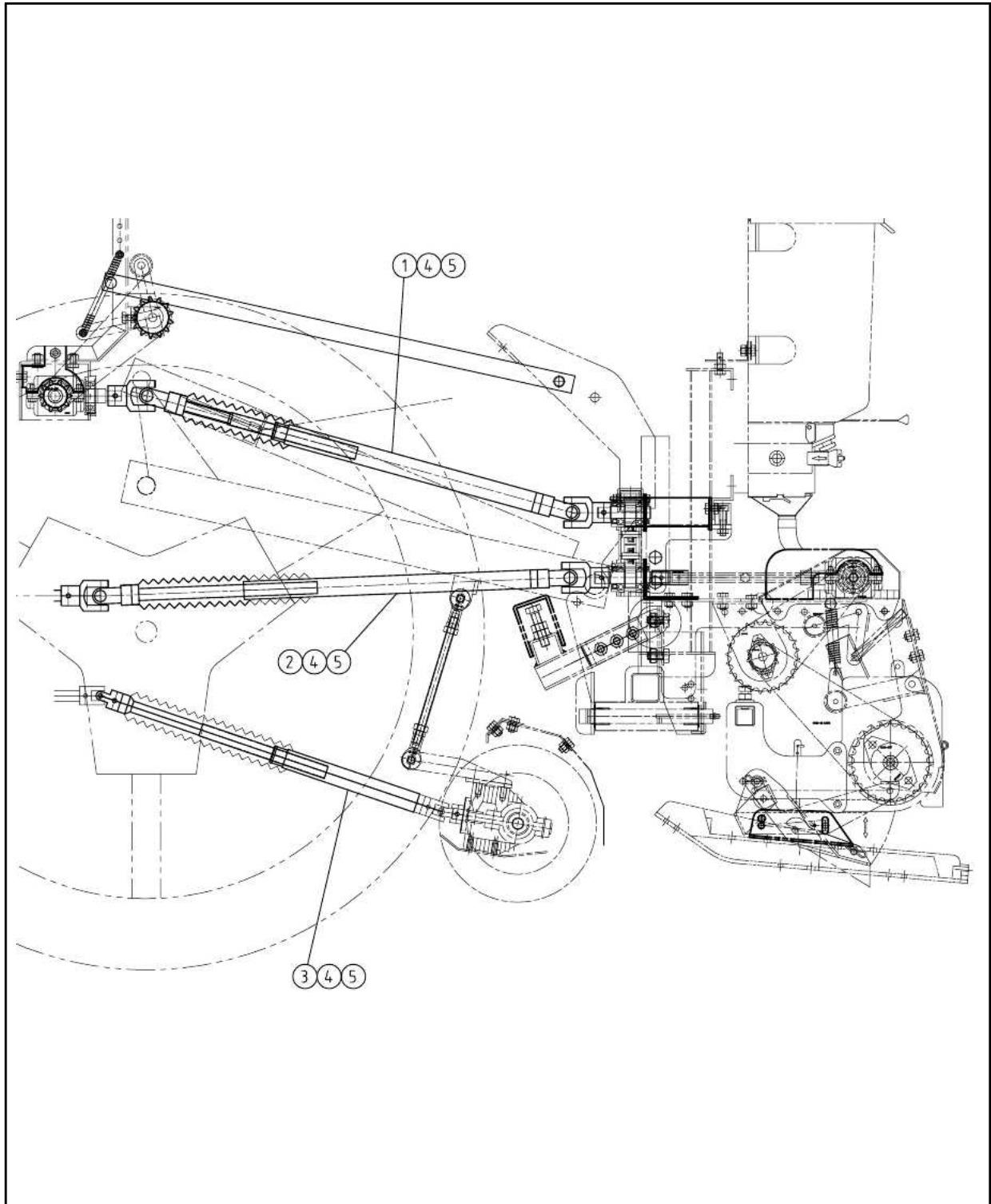
B. Layout for Main Power Transmission

1) Side fertilizer pats, power transmission parts



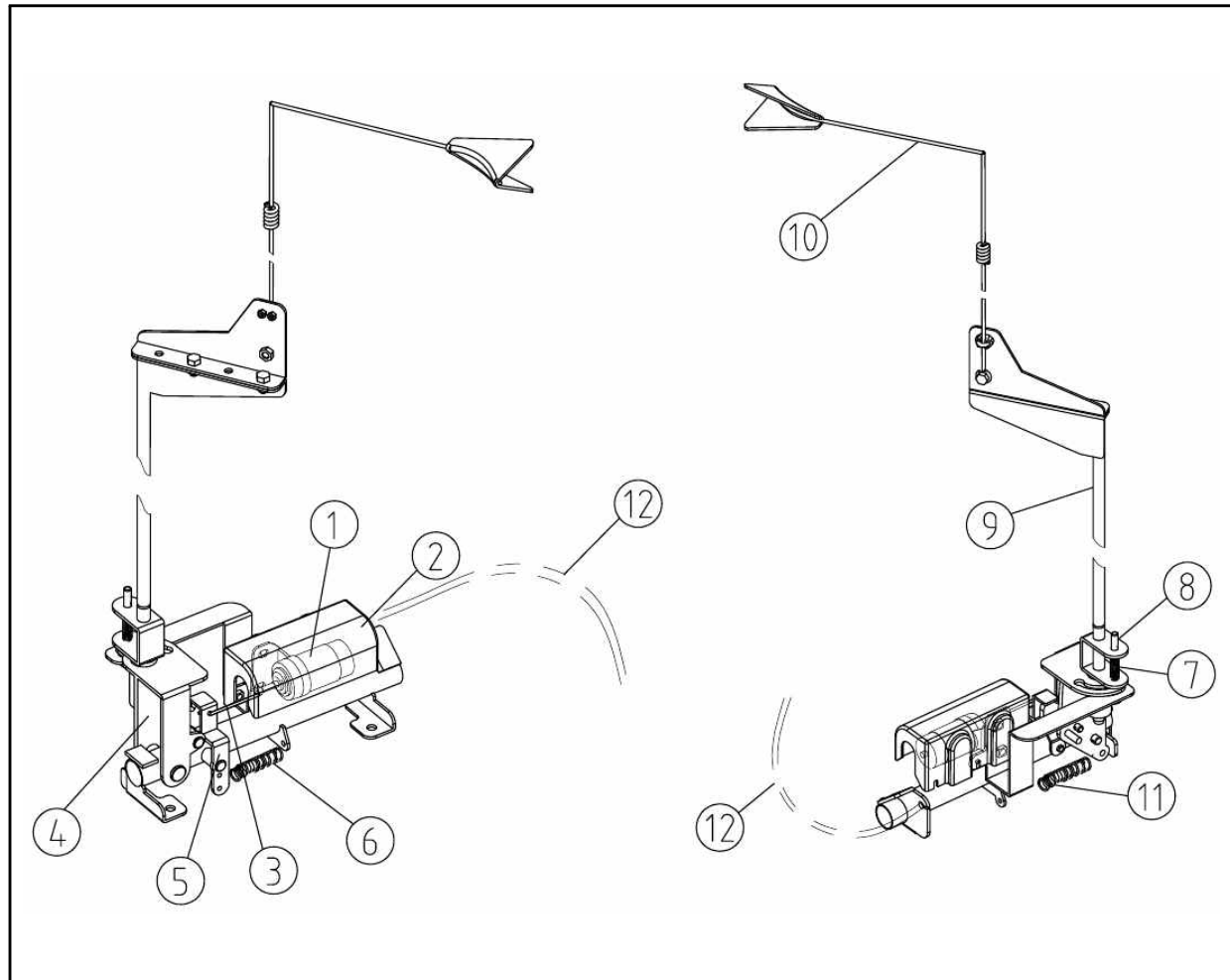
NO	Parts No.	Name of parts	Quantity	Note
1	UP016D00	End gear	1	Side fertilizer parts
2		Chain	1	
3	UP016A00	Delivery shaft	1	
4		chain	1	
5	PSR7009	Drive gear	1	
6	UP25000	Drive gear	1	
7	LP031007	Tension roller	1	
1	LP03A400	End gear	1	Sower-power transmission parts
2		chain	1	
3	LP03A100	Drive gear	1	
4	LP0311200	Drive gear	1	
5		Chain	1	
6	LP0310600	Idle gear	1	
7	LP03A800	Tension arm	1	
8	LP03A010	Tension spring	1	
9	KRG03100	Double gear box	1	
10	BG14000	Bevel gear	1	
11	LP02021	Plate	2	

2)Main power transmission



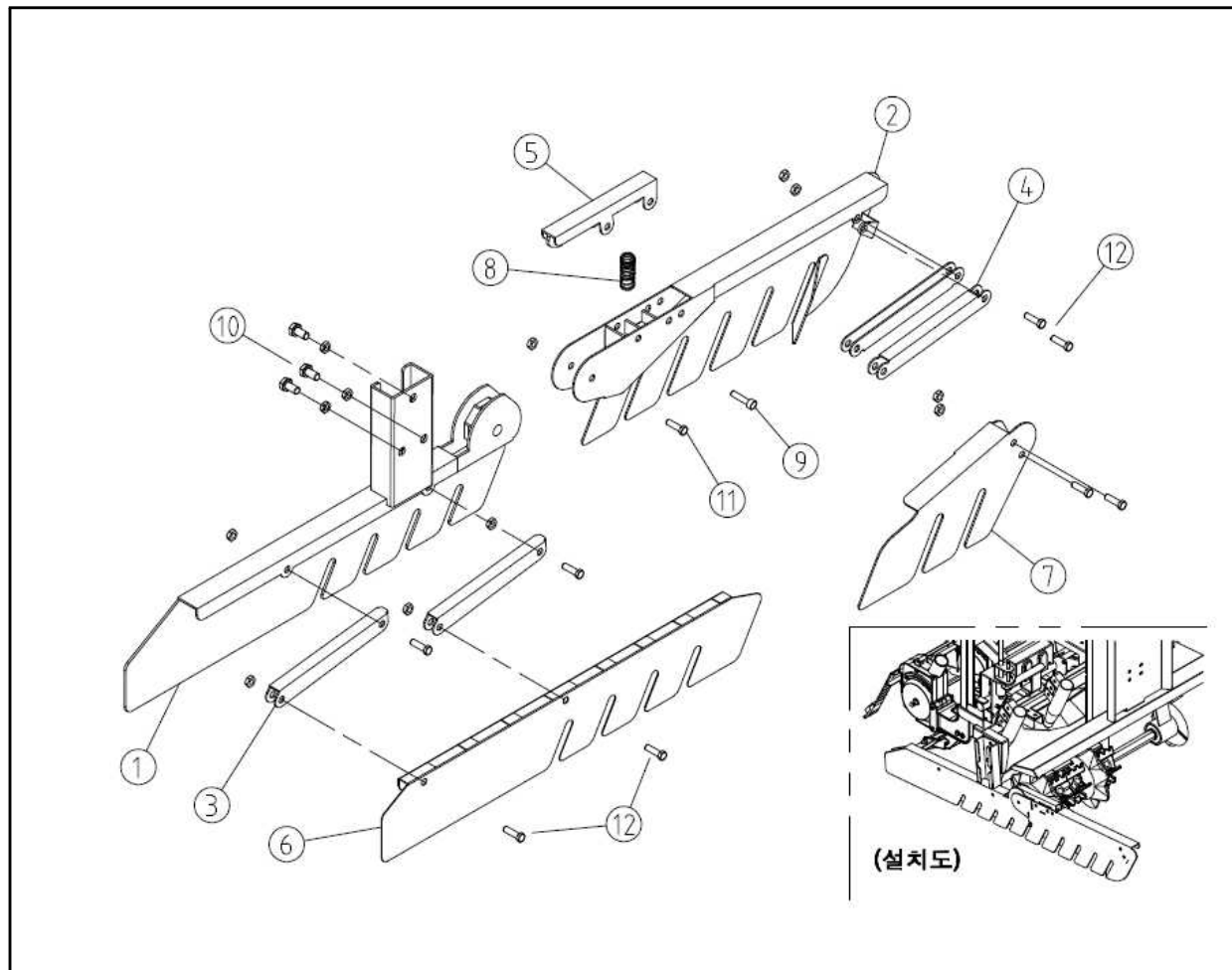
NO	Parts No.	Name of parts	Quantity	Note
1		Side fertilizer joint	1	
2		Main joint	1	
3		Rake joint	1	
4		Joint pin	6	
5		Split pin	6	

C. Layout for Line draw marker



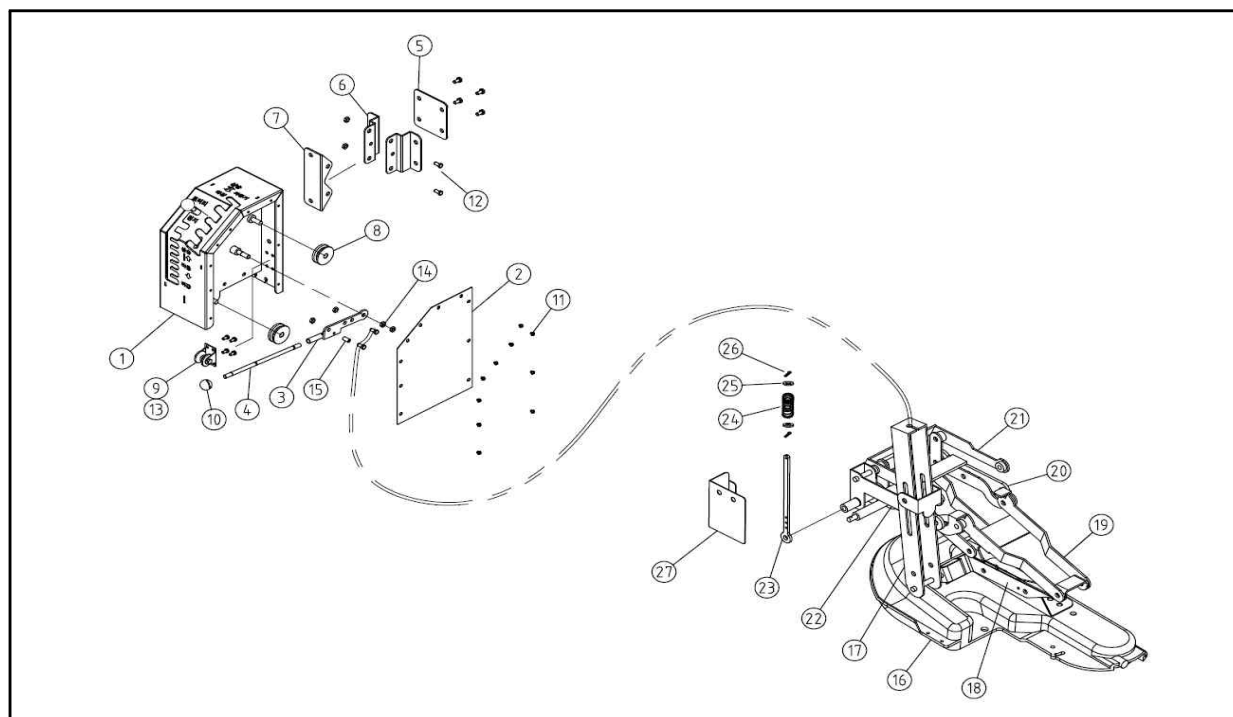
NO	Parts No.	Name of parts	Quantity	Note
1		Motor - Left	1	
		Motor - Right	1	
2		Motor cover	2	
3		Pin	2	
4	LM020600	Hinge - Left	1	
	LM020500	Hinge - Right	1	
5	LM020400	Hoop link - Left	1	
	LM020300	Hoop link - Right	1	
6	LP02017	Spring	2	
7		Spring	2	
8	LM02018	Pin	2	
9	LM021000	Picture bar - Left	1	
	LM020900	Picture bar - Right	1	
10	LM221000	Line marker - Left	1	
	LM220000	Line marker - Right	1	
11		Spring	2	
12		Marker wire	2	

D. Layout for Block the soil overflow



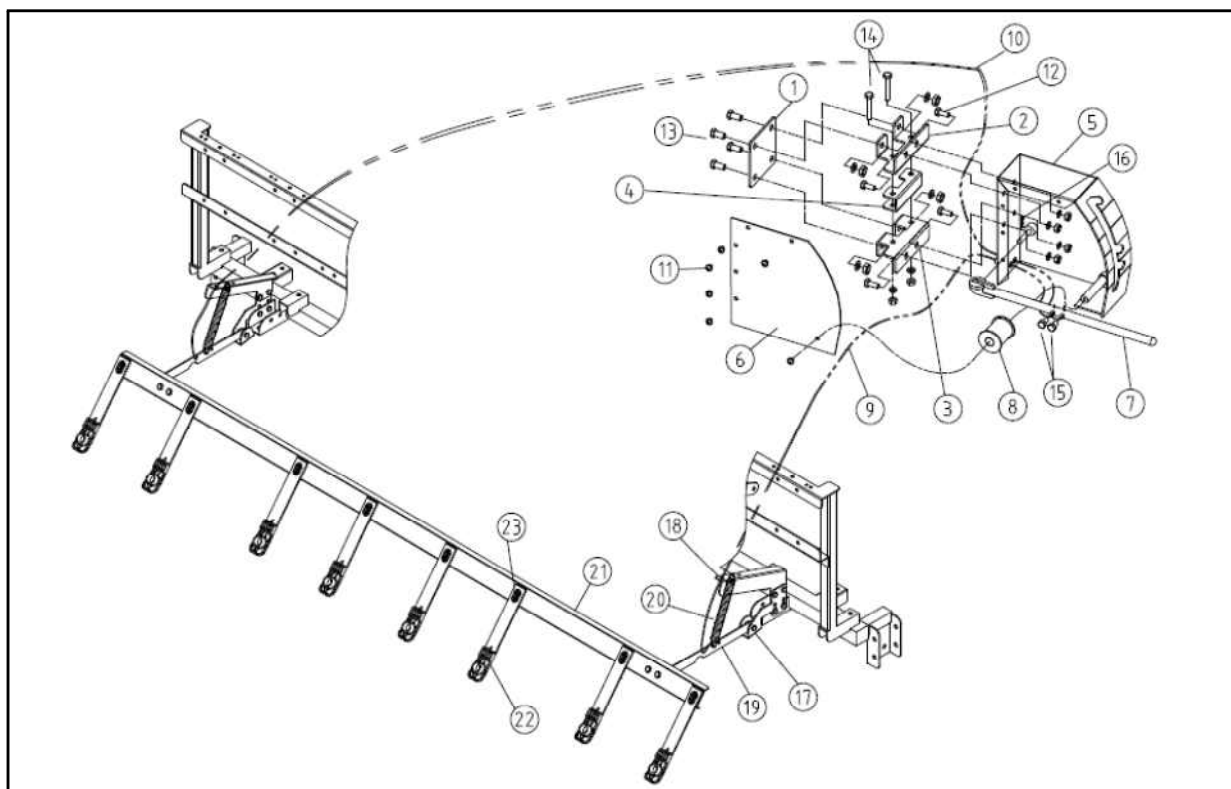
NO	Parts No.	Name of parts	Quantity	Note
1	LP03G200	Picture plate - Right	1	
	LP03F200	Picture plate - Left	1	
2	LP03G100	Front plate - Right	1	
	LP03F100	Front plate - Left	1	
3	LP03F007	Link	2	
4	LP03F006	Link	2	
5	LP03F300	Picture lever	1	
6	LP03G004	Inner guide - Right	1	
	LP03F004	Inner guide - Left	1	
7	LP03G005	Front guide - Right	1	
	LP03F005	Front guide - Left	1	
8	LP03F011	Spring	1	
9		Pin	1	
10		Bolt, nut, Washer	3	
11		Bolt, nut, Washer	1	
12		Bolt, nut, Washer	8	

E. Layout for Float



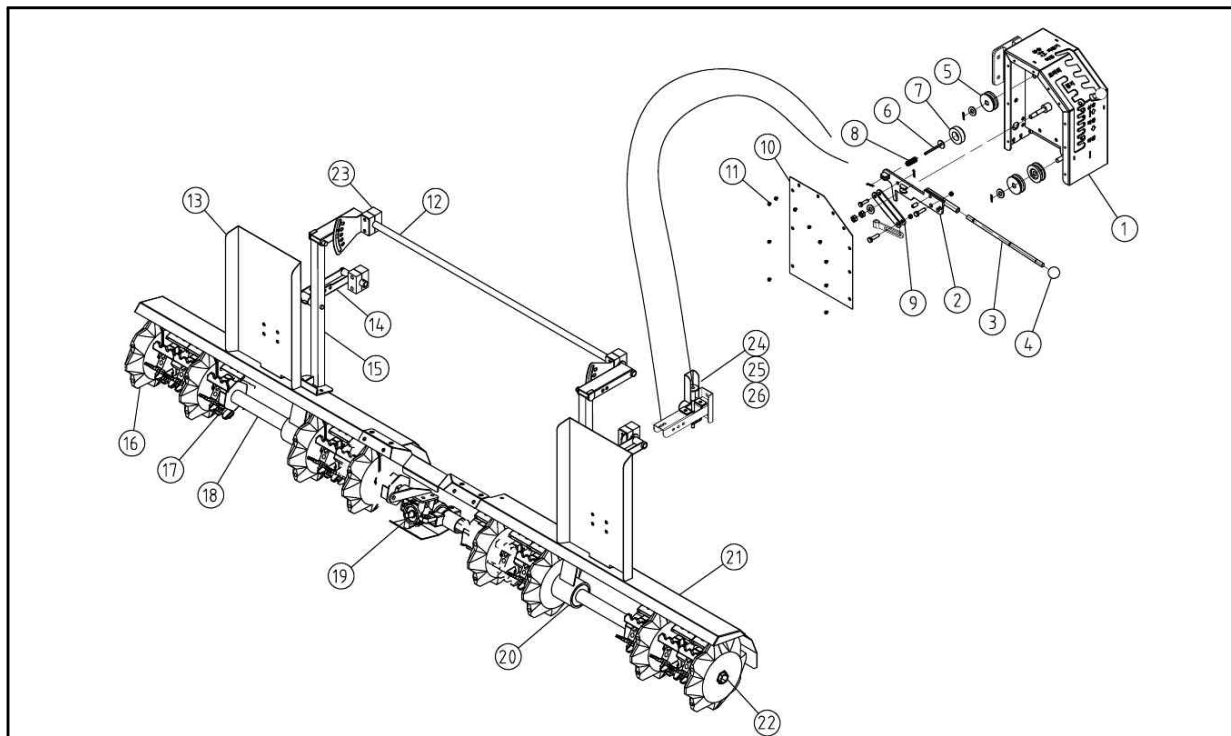
NO	Parts No.	Name of parts	Quantity	Note
1	PSR4100	Base	1	
2	PSR4002	Cover	1	
3	PSR4C00	Lever hinge	1	
4	PSR4C02	Lever	1	
5	PSR4011	Plate	1	
6	PSR4010	Plate	2	
7	PSR4009	Plate	1	
8	PSR4A08	Roller	2	
9		Roller	1	
10		Knob	1	
11		Round head bolt	11	
12		Bolt, nut	2	
13		Bolt	4	
14		Nut	2	
15		Ball flange wrench-bolt	1	
16		Float	1	
17	PSR5900	Float wire-hinge	1	
18	PSR5006	Link	1	
19	PSR5005	Link	1	
20	PSR5300	Link	1	
21	PSR5100	Link	1	
22	PSR5801	Link	1	
23	PSR5010	Spring guide	1	
24		Spring	1	
25		Washer	2	
26		R-pin	2	
27	PSR5012	cover	1	

F. Layout for Seed plank drag



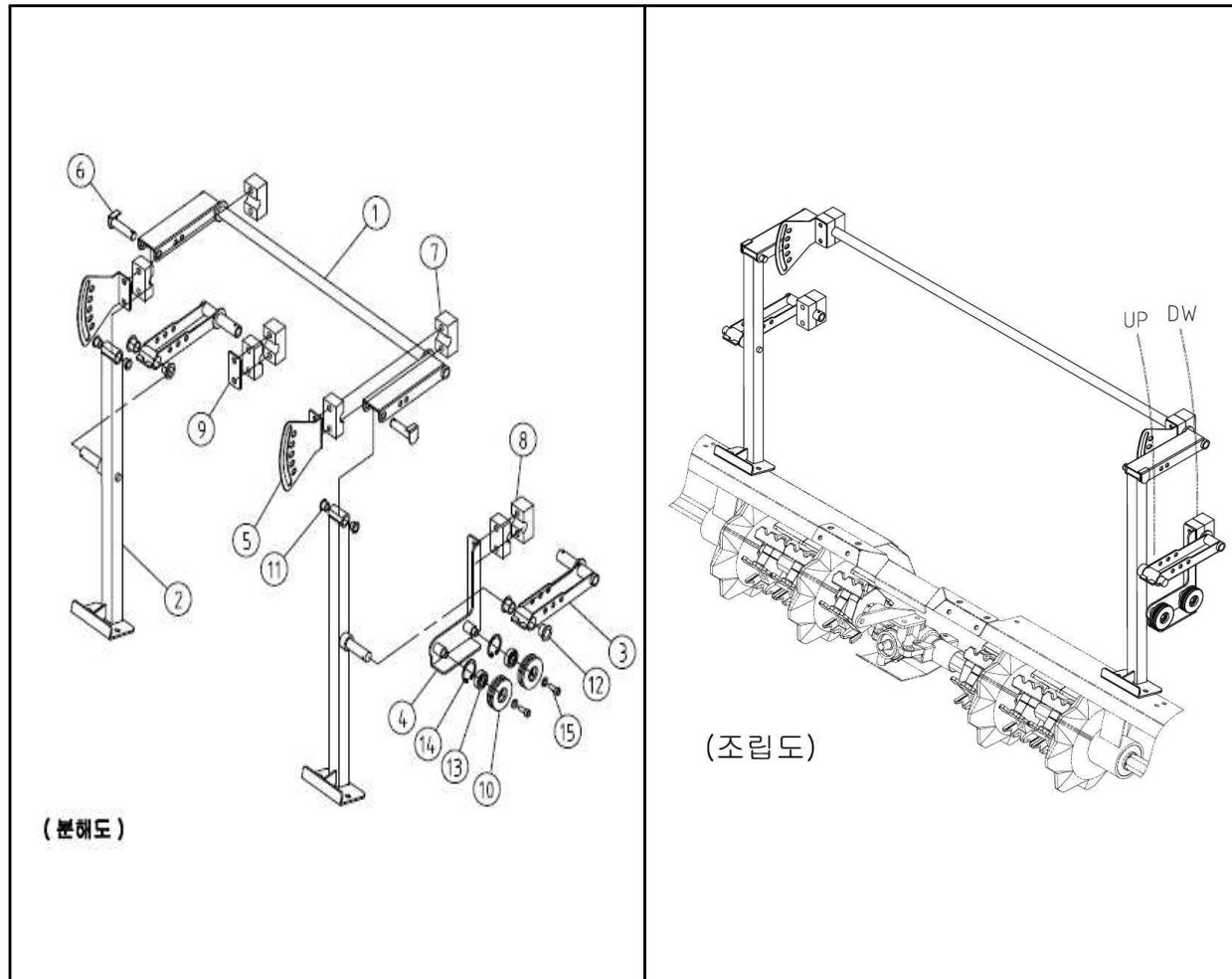
NO	Parts No.	Name of parts	Quantity	Note
1	UP01D001	Plate	1	
2	UP01D002	Plate	1	
3	UP01D003	Plate	1	
4	UP01D004	Plate	1	
5	UP01D500	Case	2	
6	UP01D006	Cover	1	
7	UP01D700	Lever	1	
8	UP01D008	Roller	1	
9	UP01D009	Wire cable - Left	1	
10	UP01D010	Wire cable - Right	1	
11		Round head bolt, Spring washer	6	
12		Bolt, but, spring washer	4	
13		Bolt, but, spring washer	4	
14		Bolt, but, spring washer	2	
15		Bolt	2	
16		R-pin	1	
17	SP02001	Plate	2	
18	SP02003	Plate	2	
19	SP02702	Plate	2	
20	SP02006	Spring	2	
21	SP02009	Plate	1	
22		Seed plank drag	8	
23	LP03H011	Plate	8	

G. Layout for Rake device(1 / 3)



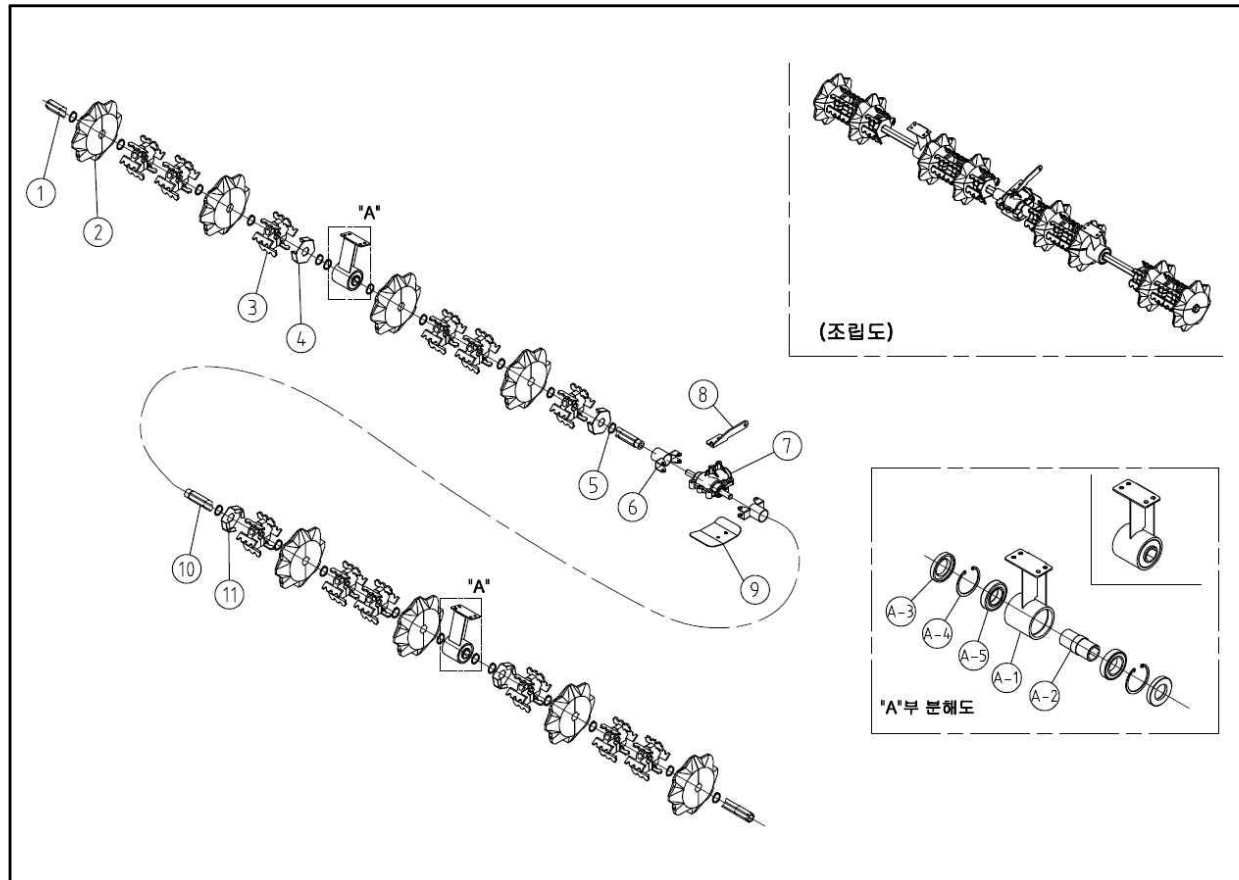
NO	Parts No.	Name of parts	Quantity	Note
1	PSR4100	Base	1	
2	PSR4A00	Rotary lever hinge	1	
3	PSR4A02	Lever	1	
4		Knob	1	
5	PSR4A10	Roller	2	
6	PSR4A400	Spring guide	1	
7	PSR4A04	Pad	1	
8		Spring	1	
9	PSR4A03	Plate	1	
10	PSR4002	Cover	1	
11		Round head bolt	10	
12	PSR11100	Up-down balance bar	1	
13	PSR1800	Wheel cover	2	
14	PSR12100&12200	Up-down lower link	2	
15	PSR1300&1400	Up-down support bar	2	
16	PSR16300	Fertilizer entrance	8	
17	PSR1608	Rake blade	24	
18	PSR1606	Pipe	2	
19		Gear box	1	
20	PSR15100	Housing body	2	
21	PSR1700	Rake cover	1	
22	PSR1600&1700	Hexagonal pipe	2	
23	PSR11003&11004	Mounting bush	4	
24	PSR12304	Mounting	1	
25	PSR12301	Adapter	1	
26		Spring	1	

G. Layout for Rake device (2 / 3)



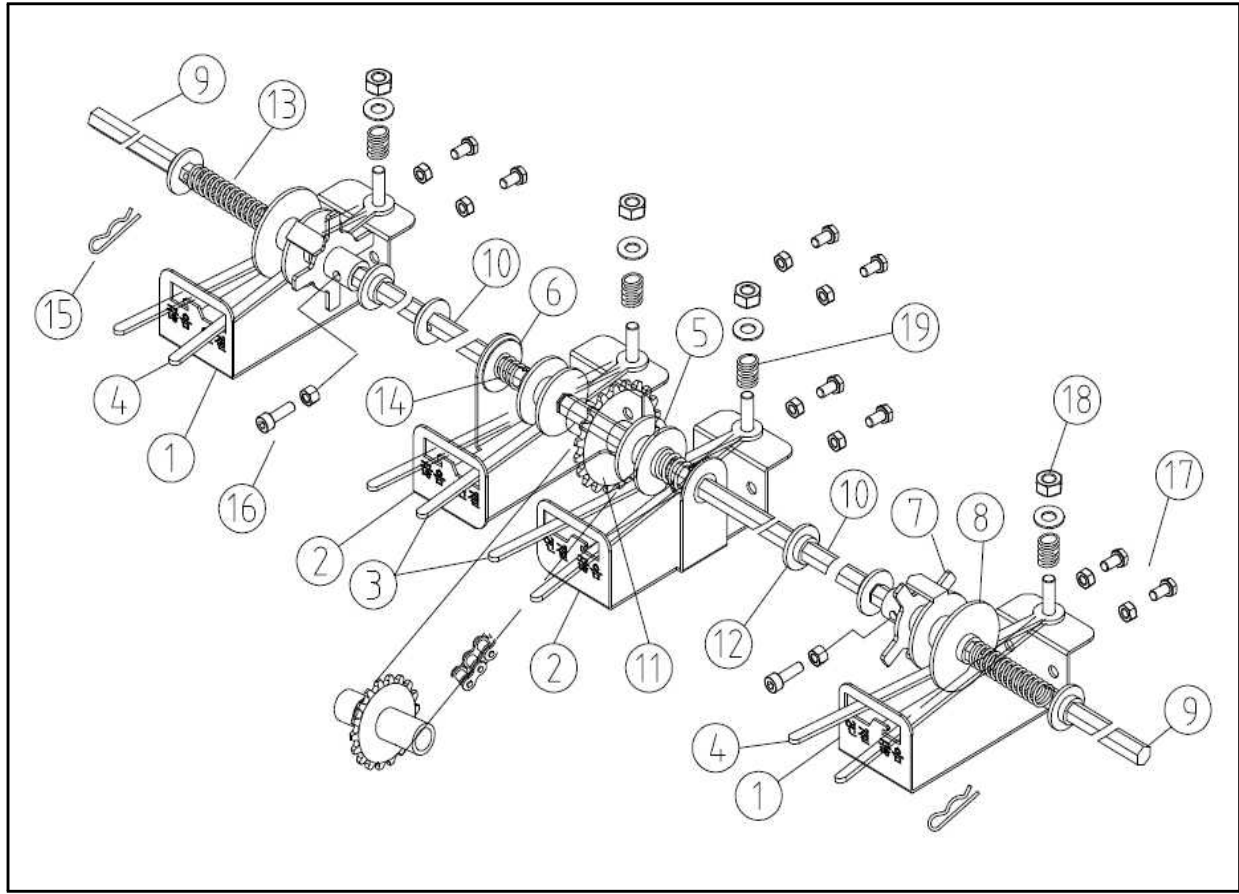
NO	Parts No.	Name of parts	Quantity	Note
1	PSR11100	Up-down balance bar	1	
2	PSR1300&1400	Up-down support bar	2	
3	PSR12100&12200	Up-down lower link	2	
4	PSR124200	Mounting bracket	1	
5	PSR11005	Mounting bush back plate	2	
6	PSR11200	Pin	2	
7	PSR11003	Mounting bush	2	
8	PSR11004	Mounting bush	2	
9	PSR1208	Back plate	1	
10	PSR12401	Roller	2	
11		Bush	4	
12		Bush	4	
13		Bearing	2	
14		Snap ring	2	
15		Wrench bolt	2	

G. Layout for Rake device (3 / 3)



NO	Parts No.	Name of parts	Quantity	Note
1	PSR1600	Hexagonal pipe - Left	1	
2	PSR16300	Fertilizer entrance	8	
3	PSR1608	Rake blade	16	
4	PSR1604	Rotary side plate - Left	2	
5		Snap ring	22	
6		Shaft housing	2	
7		Gear box	1	
8	PSR3001	Plate	1	
9	PSR3002	Plate	1	
10	PSR1700	Hexagonal pipe - Right	1	
11	PSR1605	Rotary side plate - Right	2	
A-1	PSR15100	Housing body	1	
A-2	PSR1502	Socket	1	
A-3		Oil seal	2	
A-4		Snap ring	2	
A-5		Bearing	2	

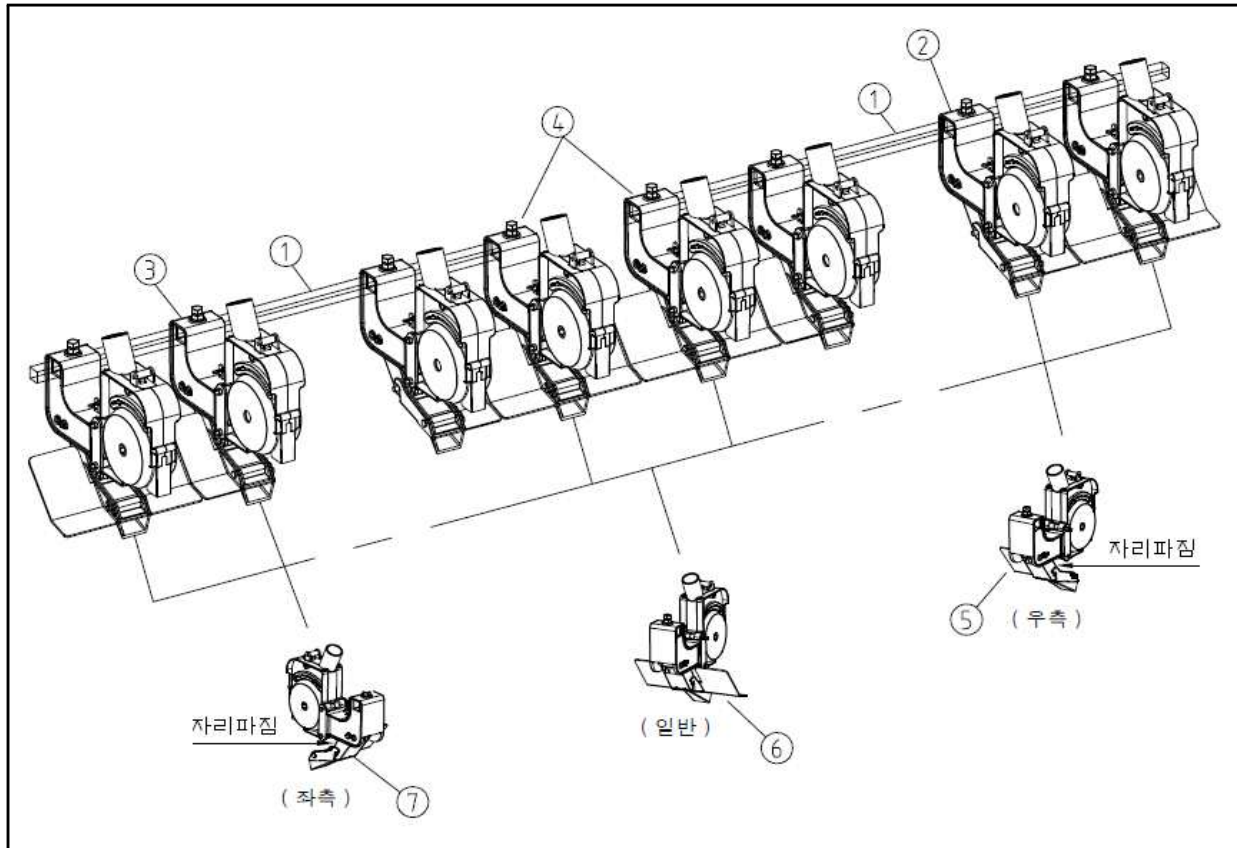
H. Layout for row-volume controller



NO	Parts No.	Name of parts	Quantity	Note
1	LP03AE01	Disconnection - Right	2	
	LP03AF01	Disconnection - Left	2	
2	LP03B501	Disconnection - Mid right	2	
	LP03C501	Disconnection - Mid left	2	
3	LP03A013	Lever	4	
4	LP03B004	Lever	4	
5	LP03A012	Clutch	4	
6	LP03A016	Back plate	4	
7	LP03B100	Cross coupling	4	
8	LP03B200	Clutch	4	
9	LP03015	Shaft	4	
10	LP03014	Shaft	4	
11	LP03A011	Connecting shaft	2	
12	LP03B003	Picture	12	
13	LP03A017	Spring	4	
14	LP03B006	Spring	4	
15		R-pin	4	
16		Bolt, nut	4	
17		Bolt, nut, washer	16	
18		Nut	8	

I. Layout for Multi-discharge device

1) Arranged connection



2) Multi-discharge device

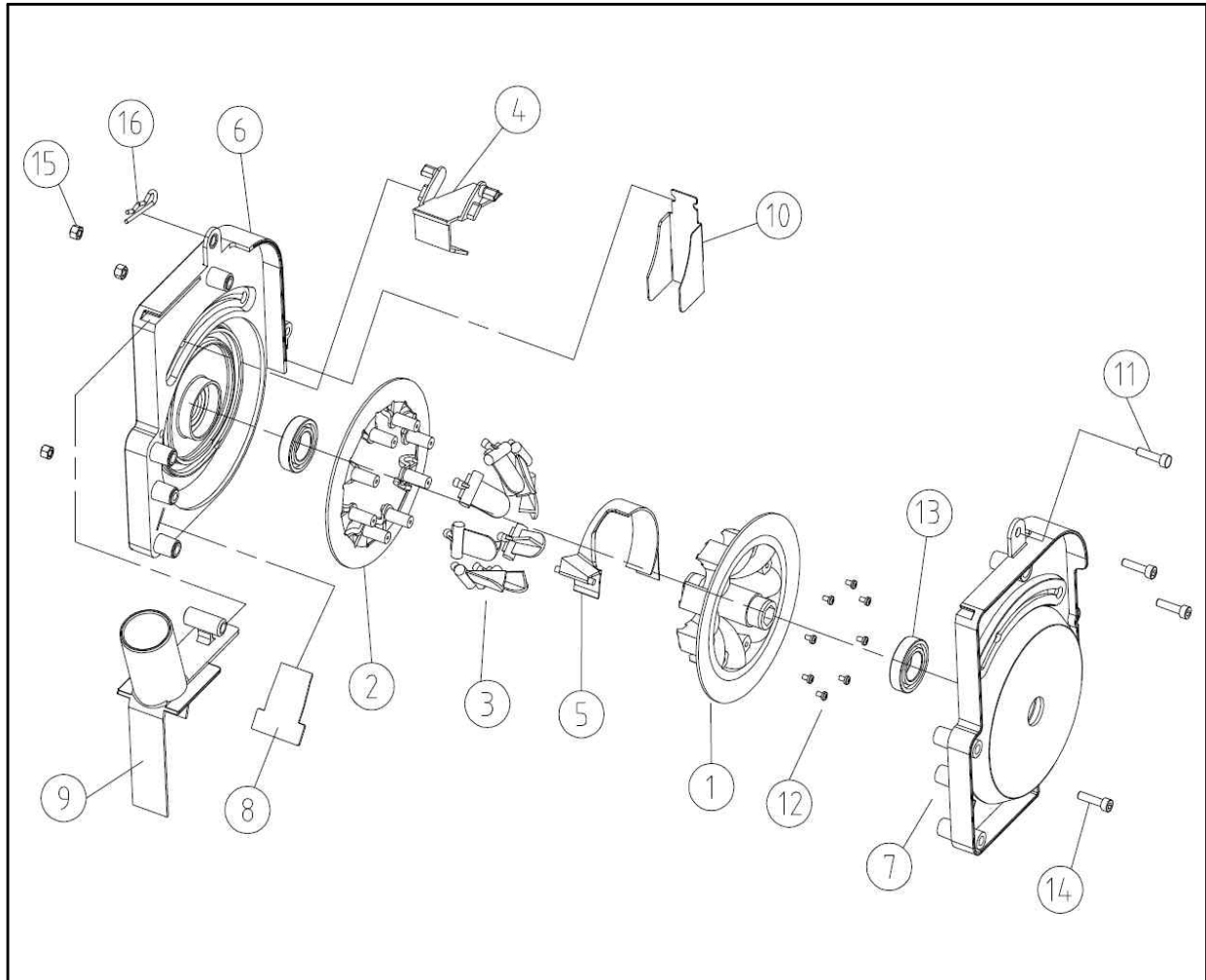
1) 배치 관계도

NO	부품번호	부 품 명	수 량	비 고
1		지지대	2	
2		멀티배출장치 - 우	2	
3		멀티배출장치 - 좌	2	
4		멀티배출장치 - 일반	4	
5	07RF94C0	작조굴 (U형) - 좌	2	
6	07RF8300	작조굴 (U형) - 일반	4	
7	07RF83C0	작조굴 (U형) - 우	2	

2) 멀티배출장치

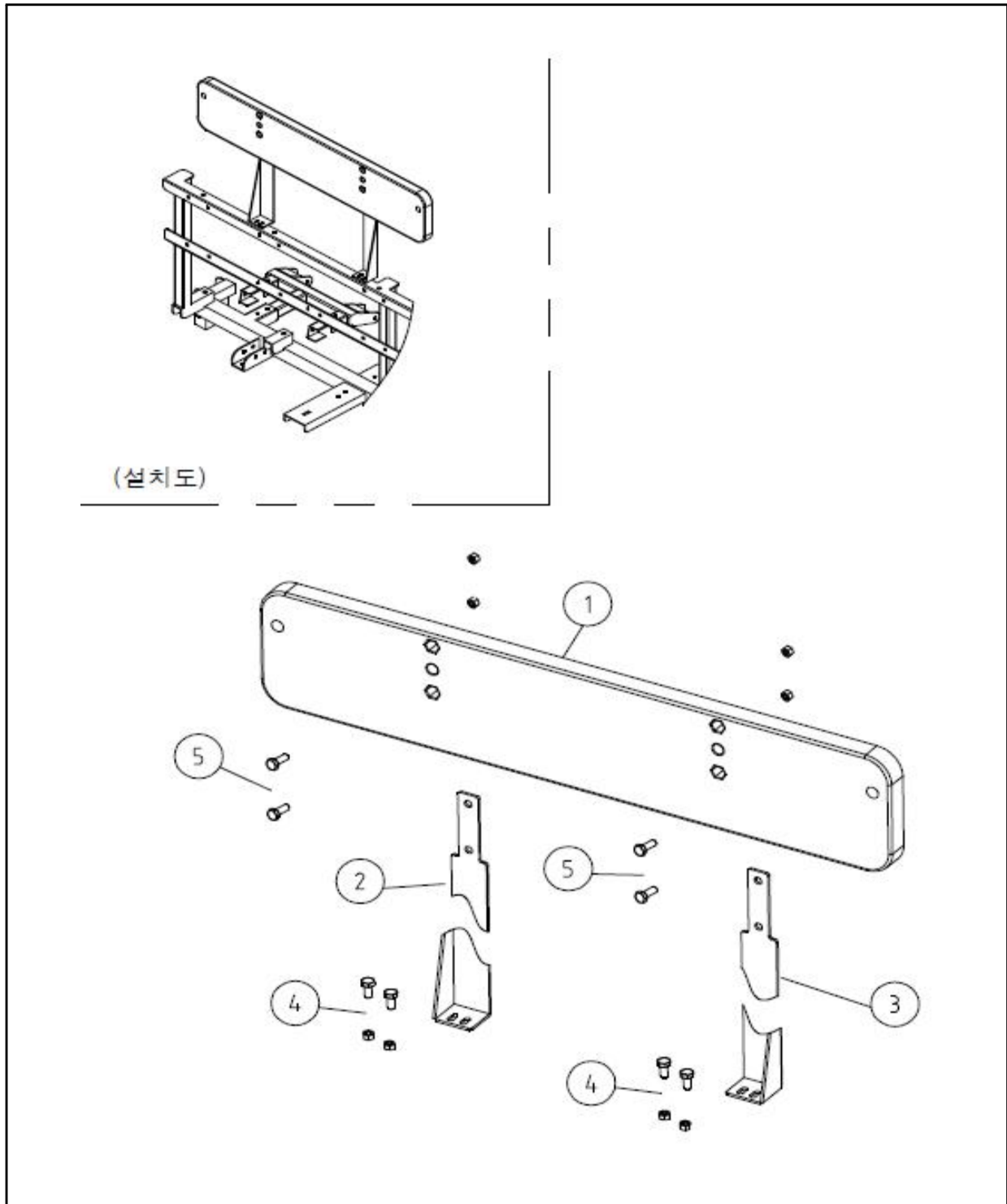
NO	부품번호	부 품 명	수 량	비 고
1	01DS1000	다기능배출장치	8	
2	07RF82C0	브라켓트	8	
3	07RF8300	작조기 힌지	8	
4	07RF8111	스프링	8	
5	07RF8108	평와셔	8	
6	07RF8501	스프링가이드	8	
7	07RF8106	핀	8	
8	07RF8109	핀	8	
9	L0130	핀	8	
10	07RF8109	핀	8	
11		볼트	8	M10X25L
12		볼트, 너트	16	M6X85L

3)Multi-discharger connection



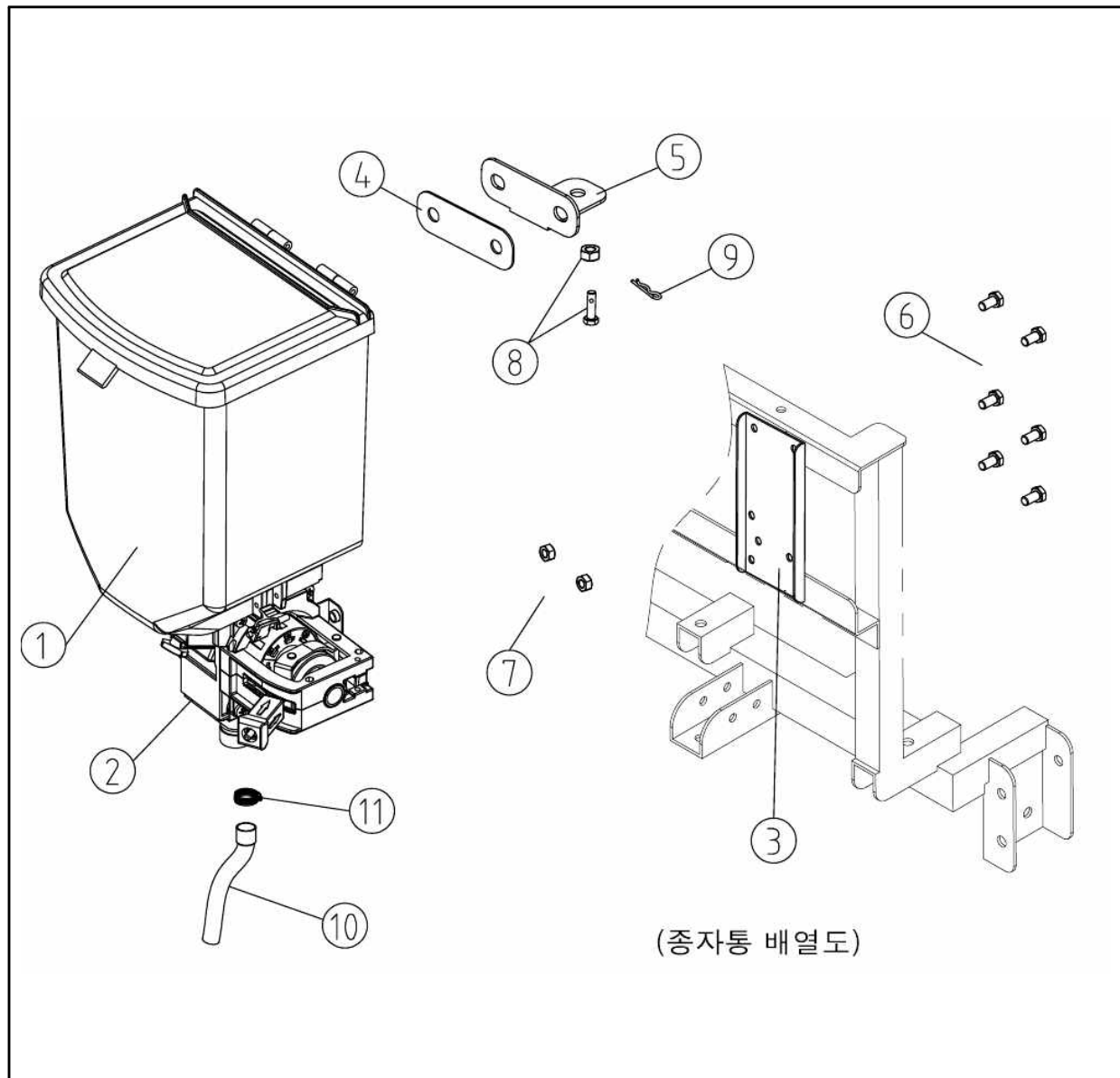
NO	Parts No.	Name of parts	Quantity	Note
1	MD01001	Guide disk - A	1	
2	MD01002	Guide disk - B	1	
3	MD01003	Ejector	1	
4	MD01004	Adjuster	1	
5	MD01005	Inguide	1	
6	MD01006	Cover - Right	1	
7	MD01007	Cover - Left	1	
8	MD01008	Scraper	1	
9	MD01009	Hose guide	1	
10	MD01010	Prevent scattering guide	1	
11	MD01011	Pin	1	
12		Round head screw	8	
13		Ball bearing	2	
14		Socket head bolt	3	
15		Nut	3	
16		R-Pin	1	

J. Layout for Nameplate



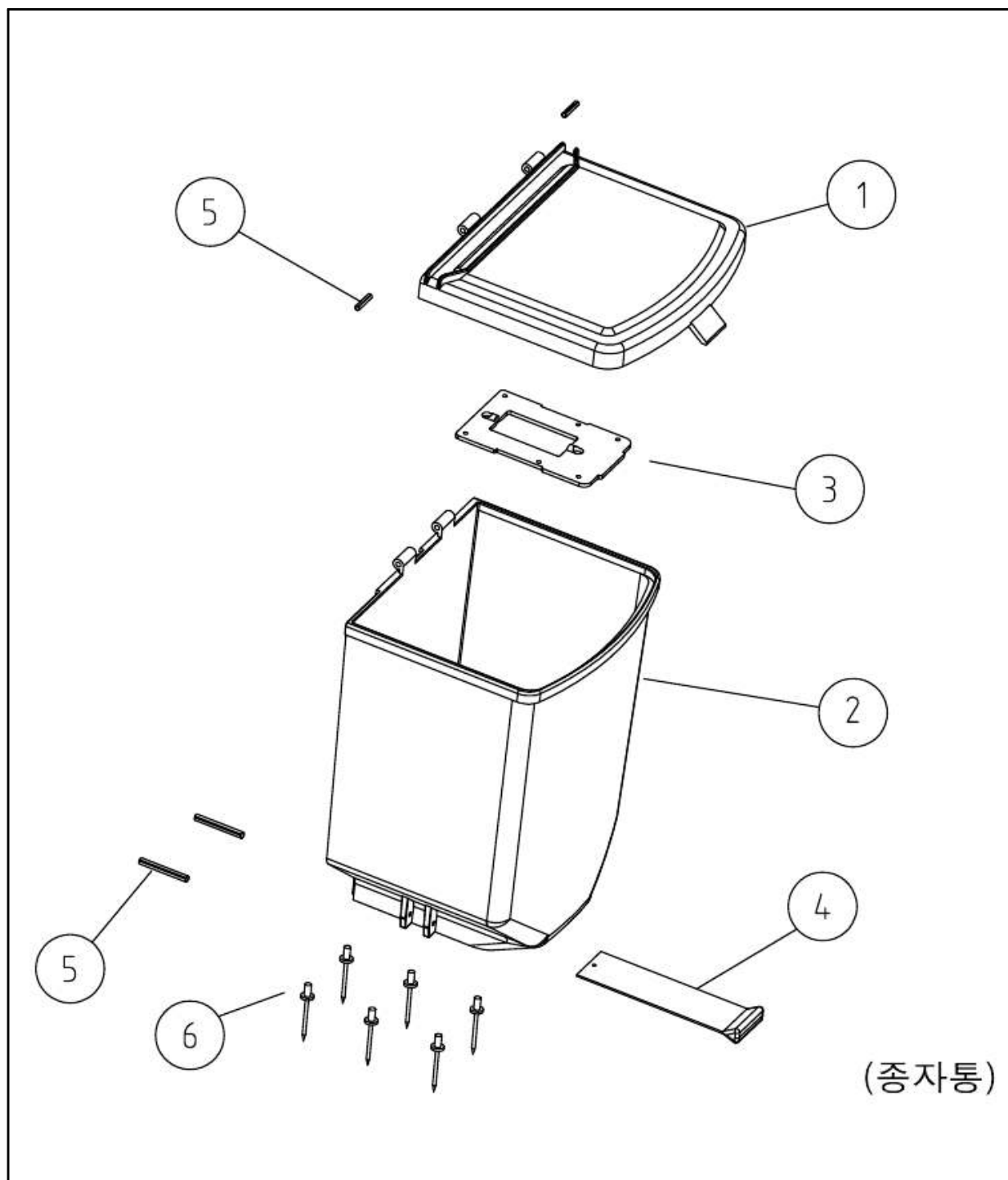
NO	Parts No.	Name of parts	Quantity	Note
1	07RF0101	Nameplate	2	
2	LP03Q001	Nameplate holder - Left	2	
3	LP03Q002	Nameplate holder - Right	2	
4		Bolt, nut, washer	8	
5		Bolt, nut	4	

K. Layout for Seedbox



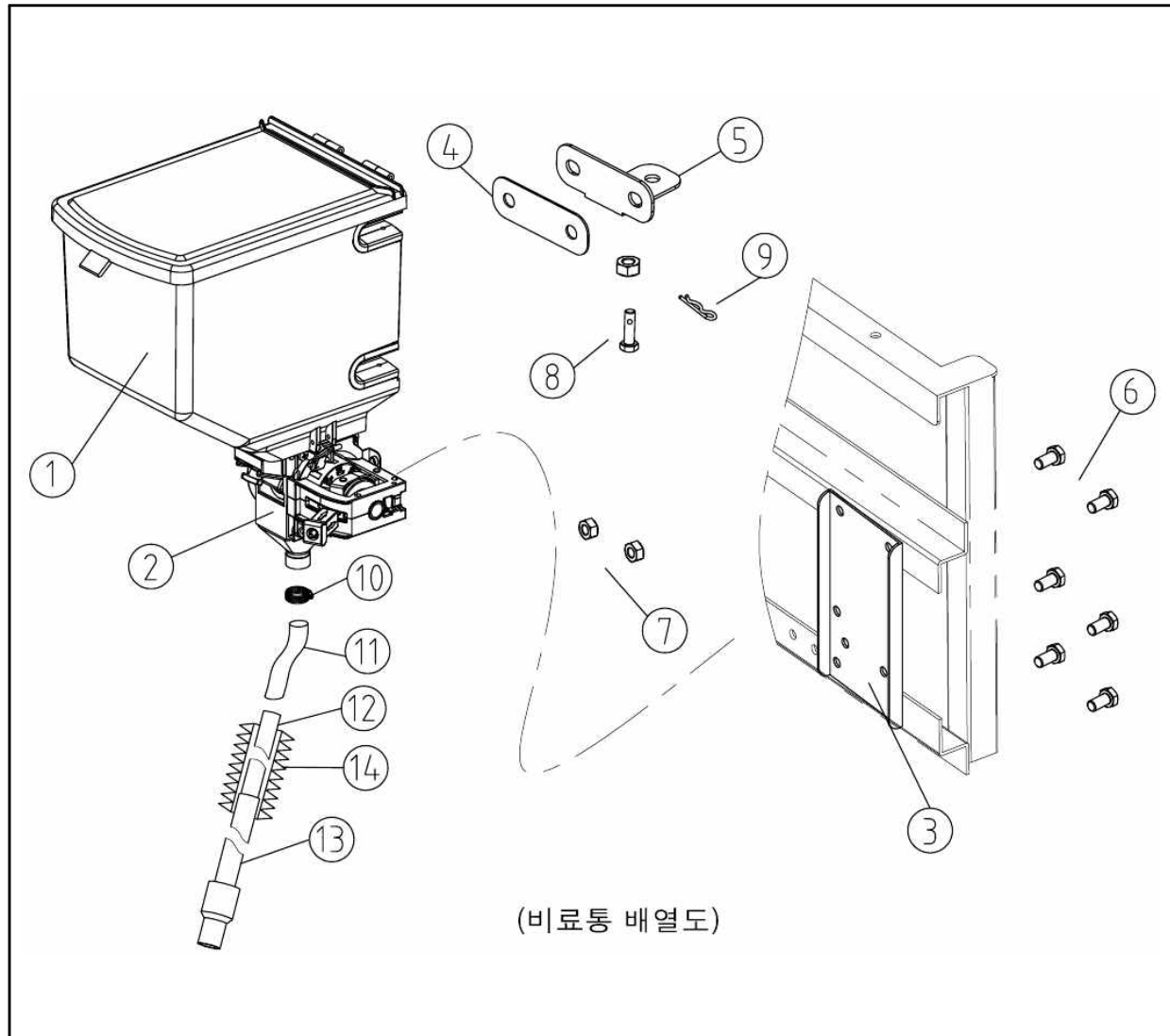
NO	Parts No.	Name of parts	Quantity	Note
1	CM6400	Seedbox	8	
2	01DS3000	Driving wheel	8	
3	LP03J01	Plate	8	
4	LP03J02	Plate	8	
5	LP03J03	Plate	8	
6		Bolt	48	
7		Nut	16	
8		Bolt , nut	8	
9		R-pin	8	
10		Seed emission hose	8	
11		Hose band	8	

1)Seedbox connection



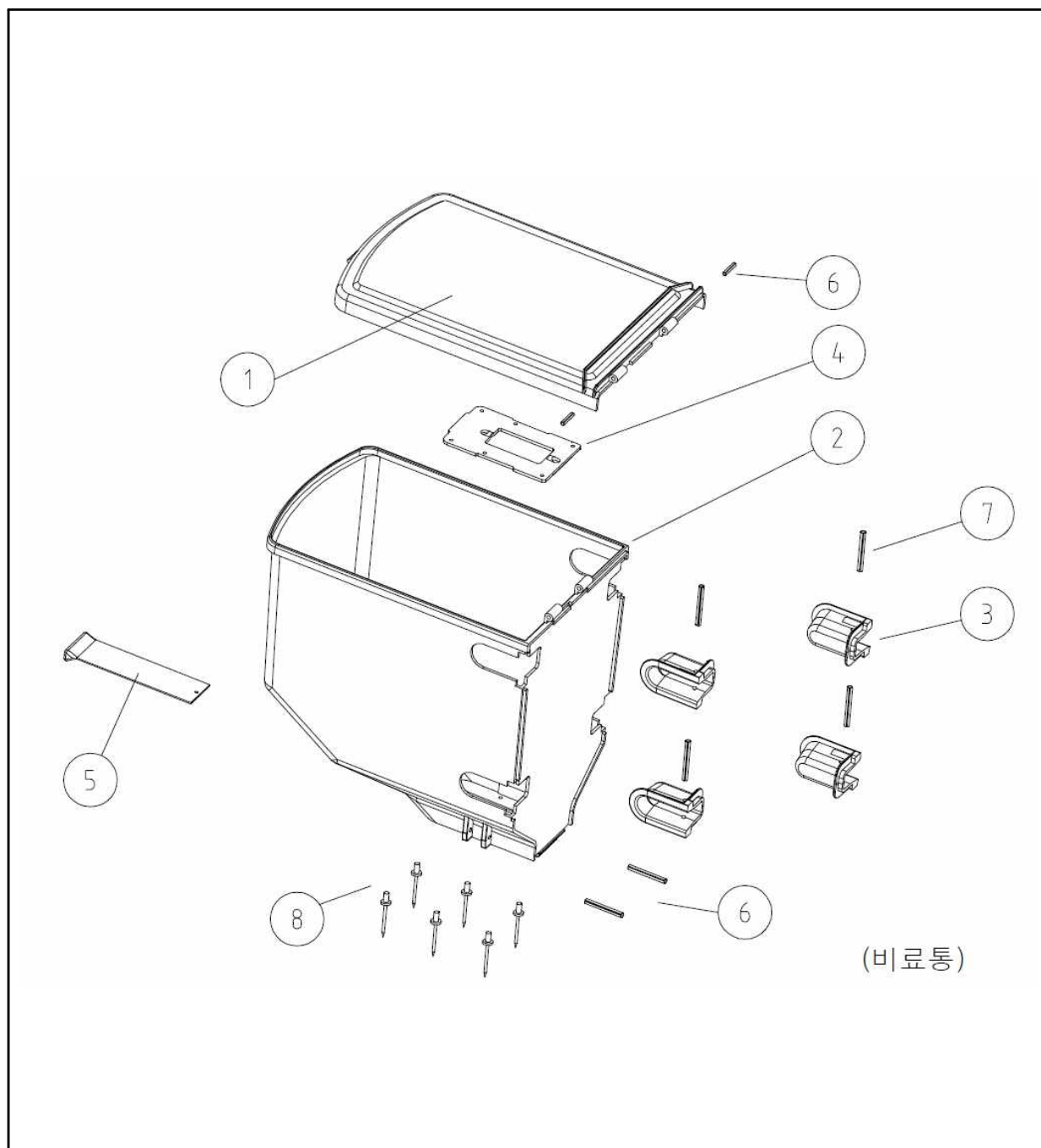
NO	Parts No.	Name of parts	Quantity	Note
1	CM6401	Cover	1	
2	CM6402	Seedbox	1	
3	CM6404	Stopper guide	1	
4	CM6405	Stopper	1	
5	PM5101	Spring pin	4	
6		Rivet nail	6	

L. Layout for Fertilizerbox



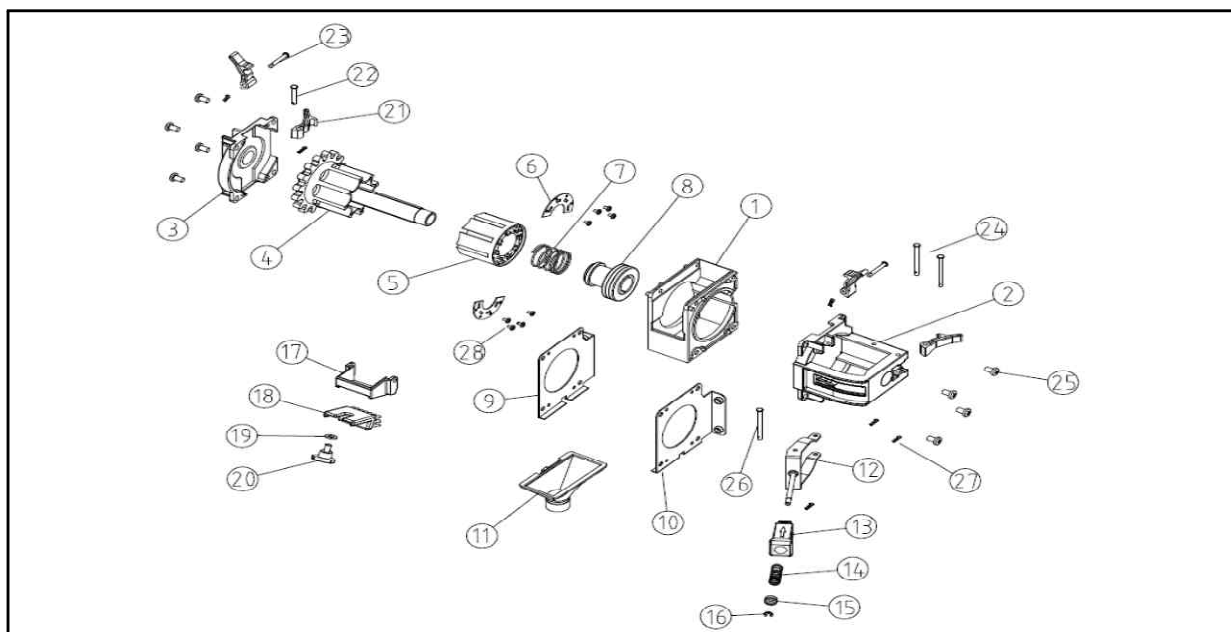
NO	Parts No.	Name of parts	Quantity	Note
1	CM6300	Fertilizerbox	8	
2	01DS3000	Driving wheel	8	
3	LP03J01	Plate	8	
4	LP03J03	Plate	8	
5	LP03J02	Plate	8	
6		Bolt	48	
7		Nut	16	
8		Bolt, nut	8	
9		R-pin	8	
10		Hose band	24	
11		Hose	8	
12		Fertilizer pipe - top	8	
13		Fertilizer pipe - bottom	8	
14		Rubber pantograph	8	

1)Fertilizerbox connection



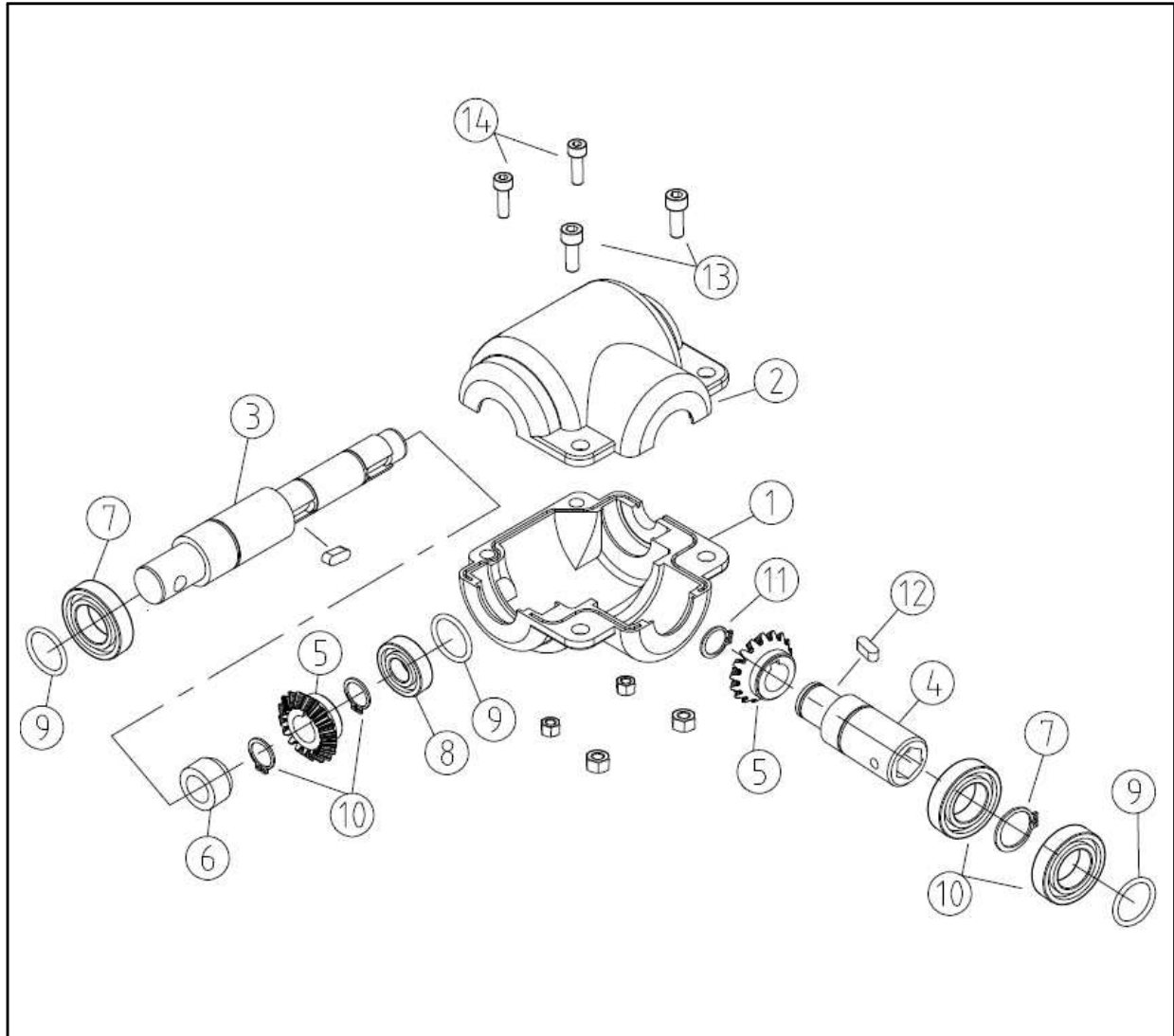
NO	Parts No.	Name of parts	Quantity	Note
1	CM6401	Cover	1	
2	CM6402	Fertilizerbox	1	
3	CM6403	Pin cover	4	
4	CM6404	Stopper guide	1	
5	CM6405	Stopper	1	
6	PM5101	Spring pin	4	
7	PM5100	Spring pin	4	
8		Rivet nail	6	

M. Layout for driving wheel



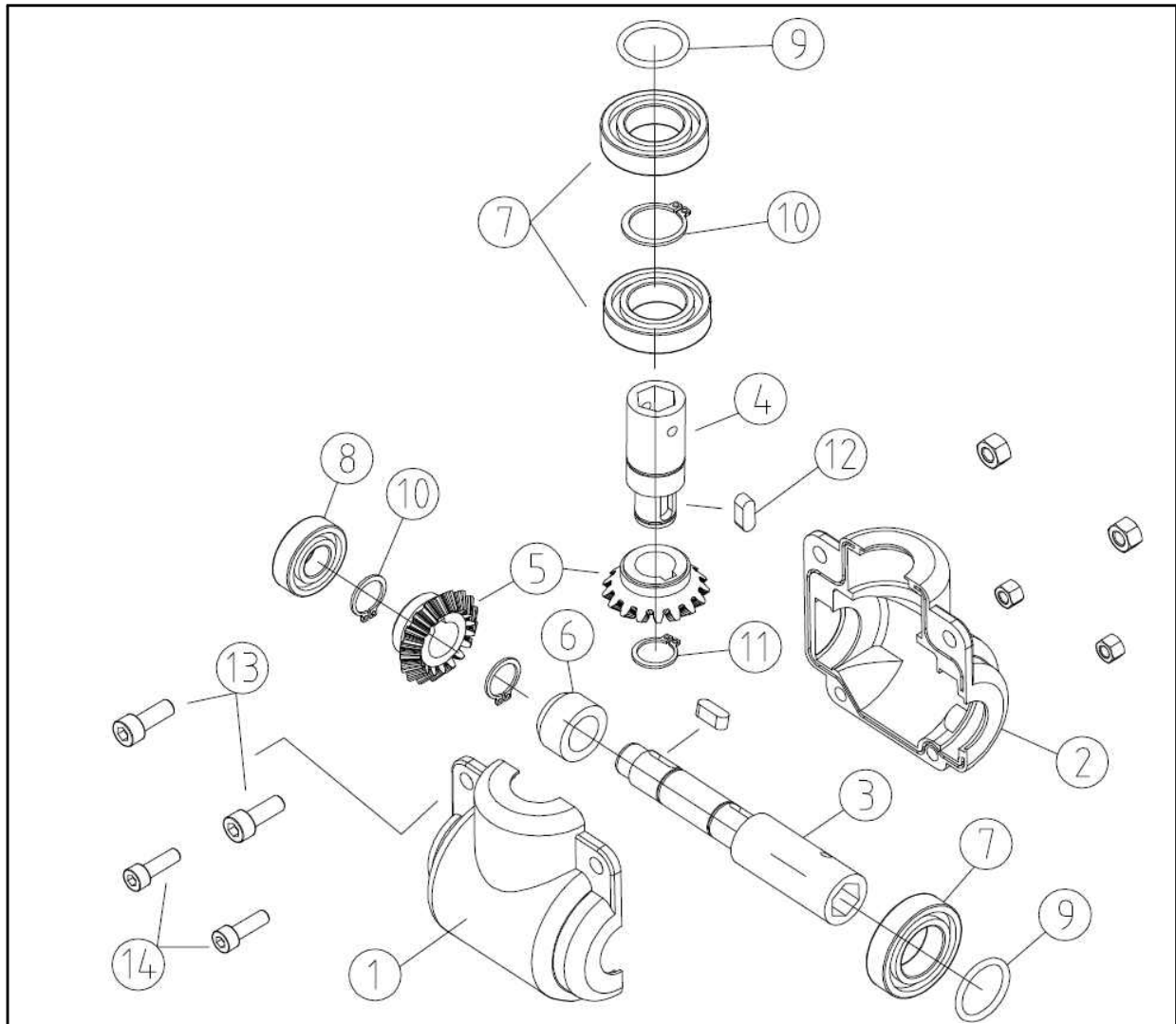
NO	Parts No.	Name of parts	Quantity	Note
1	01DS3001	Body	1	
2	01DS3002	Cover - A(Right)	1	
2-1		Cover - A(Left)	1	
3	01DS3003	Cover - B(Right)	1	
3-1		Cover - B(Left)	1	
4	01DS3004	Driving roller	1	
5	01DS3005	Slide roller	1	
6	01DS3006	Holding plate	2	
7	01DS3007	Spring	1	
8	01DS3008	Adjusting roller	1	
9	CM6109	Bracket - A	1	
10	CM6110	Bracket - B	1	
11	CM6120	Emission entrance	1	
12	01DS3012	Adjusting link	1	
13	01DS3013	Adjusting handle	1	
14	01DS3014	Spring	1	
15	01DS3015	Ring	1	
16		Snap ring	1	
17	CM6117	Brush holder	1	
18	CM6118	Brush	1	
19		Washer	1	
20	CM6119	Knob	1	
21	CM6121	Hanging loop	4	
22	PM5002	Pin	1	
23	PM5001	Pin	1	
24	01DS3024	Pin	2	
25		Screw	8	
26	01DS3026	Pin	1	
27		R-Pin	5	
28		Screw	8	

N. Layout for Bevel gear(Top)



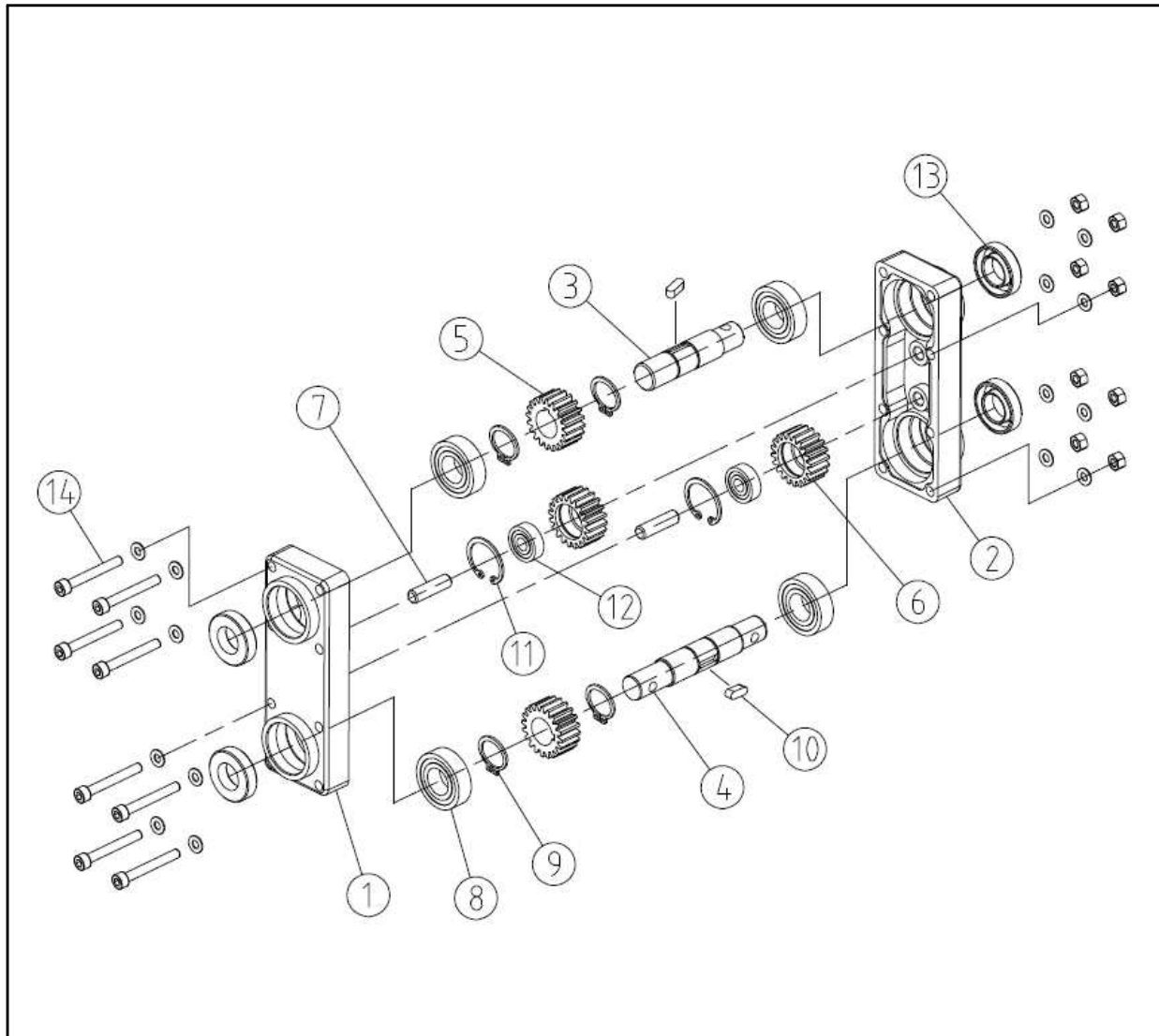
NO	Parts No.	Name of parts	Quantity	Note
1	BG11004	Case - A	1	
2	BG11005	Case - B	1	
3	BG11002	Shaft	1	
4	BG11003	Shaft	1	
5	BG01001	Bevel gear	2	
6	BG11006	Spacer	1	
7		Bearing	3	
8		Bearing	1	
9		O-ring	3	
10		Snap ring	3	
11		Snap ring	1	
12	GB010B8	Key	2	
13		Bolt, nut, washer	2	
14		Bolt, nut	2	

0. Layout for Bevel gear(Bottom)



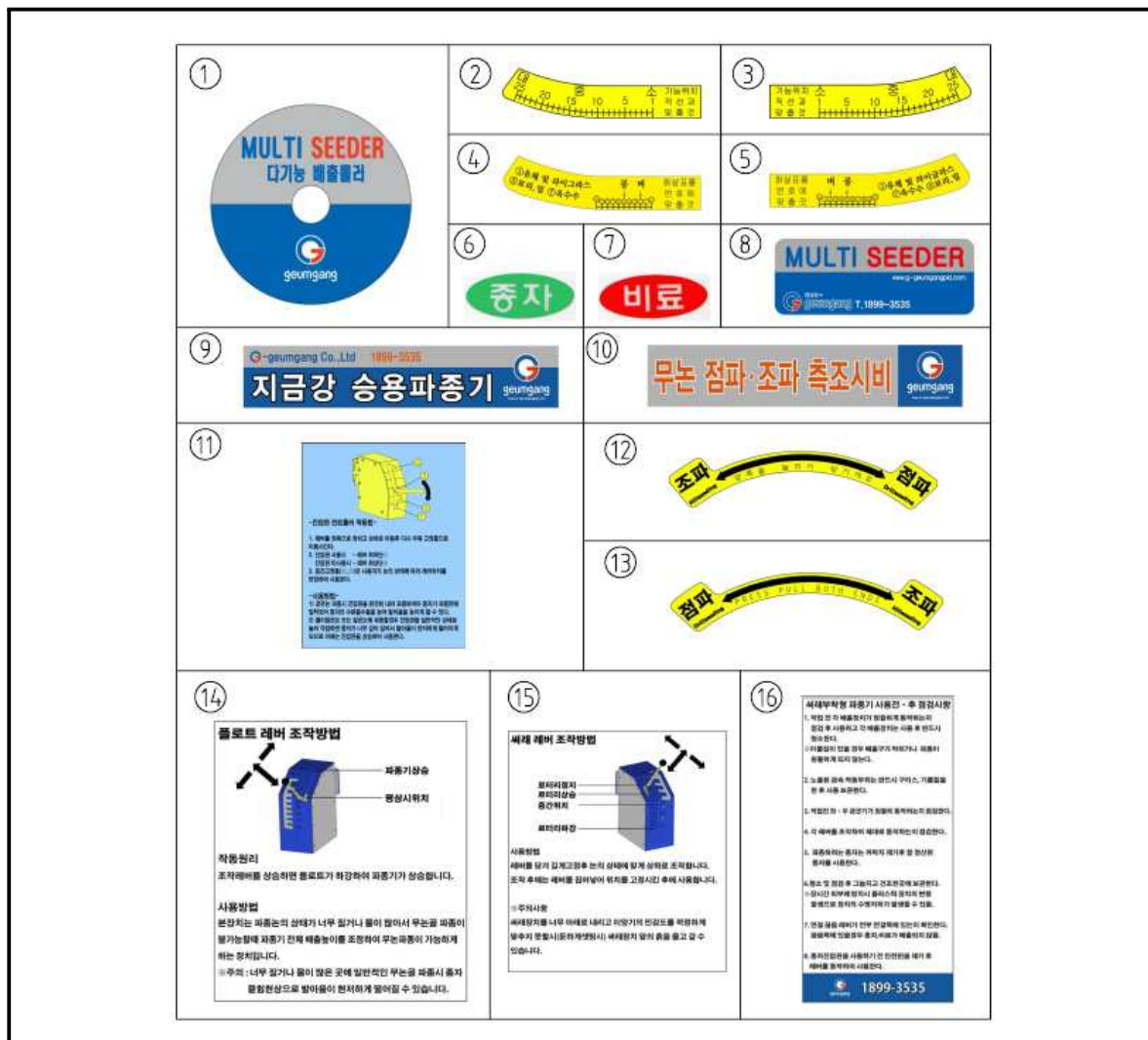
NO	Parts No.	Name of parts	Quantity	Note
1	BG11004	Case - A	1	
2	BG11005	Case - B	1	
3	BG11002	Shaft	1	
4	BG11003	Shaft	1	
5	BG01001	Bevel gear	2	
6	BG11006	Spacer	1	
7		Bearing	3	
8		Bearing	1	
9		O-ring	3	
10		Snap ring	3	
11		Snap ring	1	
12	GB010B8	Key	2	
13		Bolt, nut, washer	2	
14		Bolt, nut	2	

P. Layout for Double gear box



NO	Parts No.	Name of parts	Quantity	Note
1	KRG01101	Case - A	1	
2	KRG03102	Case - B	1	
3	KRG03106	Shaft	1	
4	KRG03105	Shaft	1	
5	KRG03103	Spur gear	2	
6	KRG01104	Idle gear	2	
7	KRG03107	Pin	2	
8		Bearing	4	
9		Snap ring	4	
10		Key	2	
11		Snap ring	2	
12		Bearing	2	
13		Oil-seal	4	
14		Bolt, nut, washer	8	

Q. Safety decal panels



NO	Parts No.	Name of parts	Quantity	Note
1		Multi emission roller		
2		Fertilizer gradation - Left		
3		Fertilizer gradation - Right		
4		Seed gradation - Left		
5		Seed gradation - Right		
6		Seed		
7		Fertilizer		
8		Nameplate - A		
9		Nameplate - B		
10		Nameplate - C		
11		Plank drag controller		
12		Hill seeding, Drill seeding		
13		Hill seeding, Drill seeding		
14		Usage of Float control lever		
15		Usage of Rake control lever		
16		General caution		