



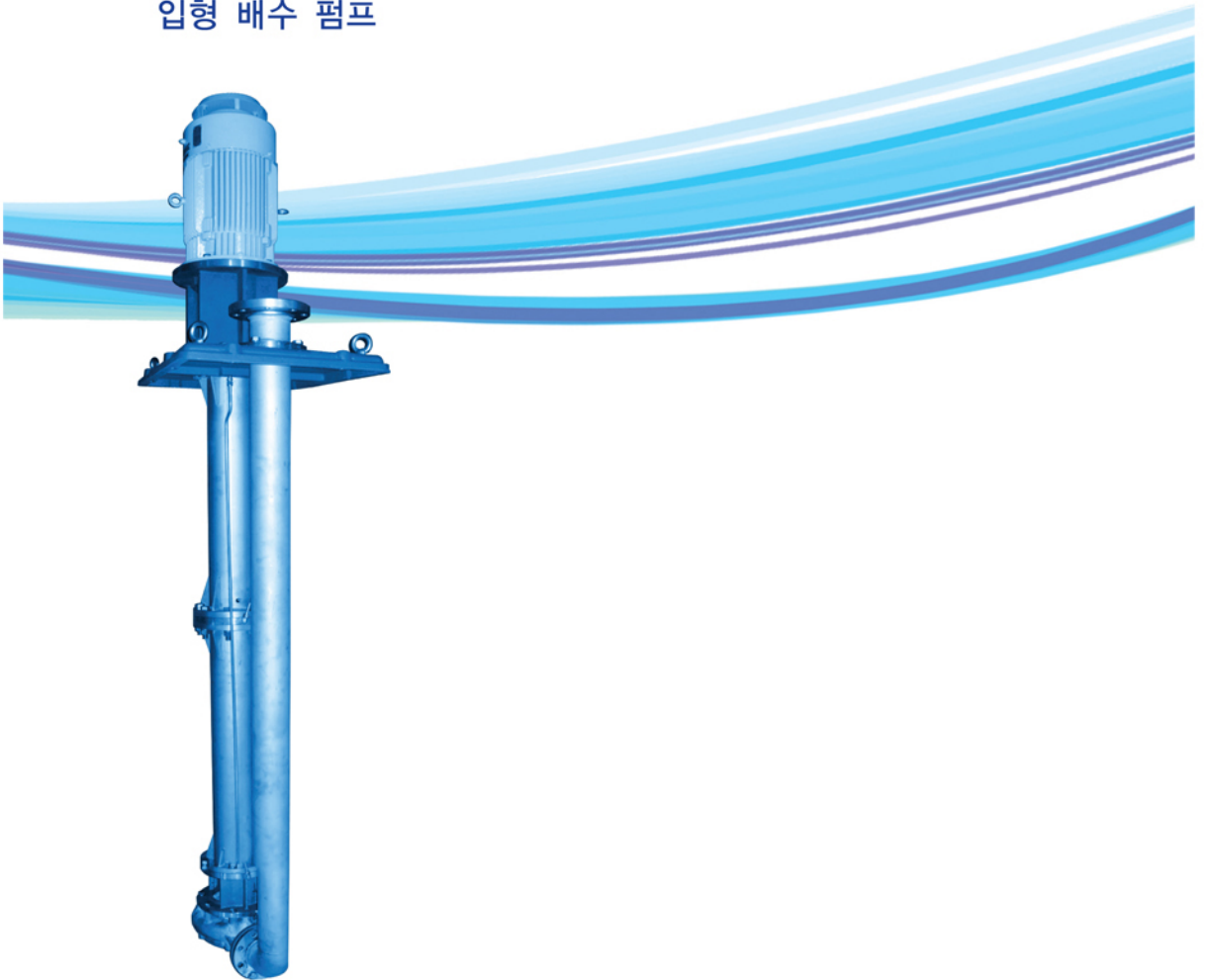
www.grtec.co.kr

A company dedicated to save environment with clean water management

GREEN TECH PUMP

GVO

입형 배수 펌프



GREEN TECH Co., Ltd.
Pump & System Engineering

GVO

VERTICAL DRAIN PUMP

VERTICAL DRAIN PUMP/입형 배수 펌프

Usages and Applications / 용도 및 적용 분야

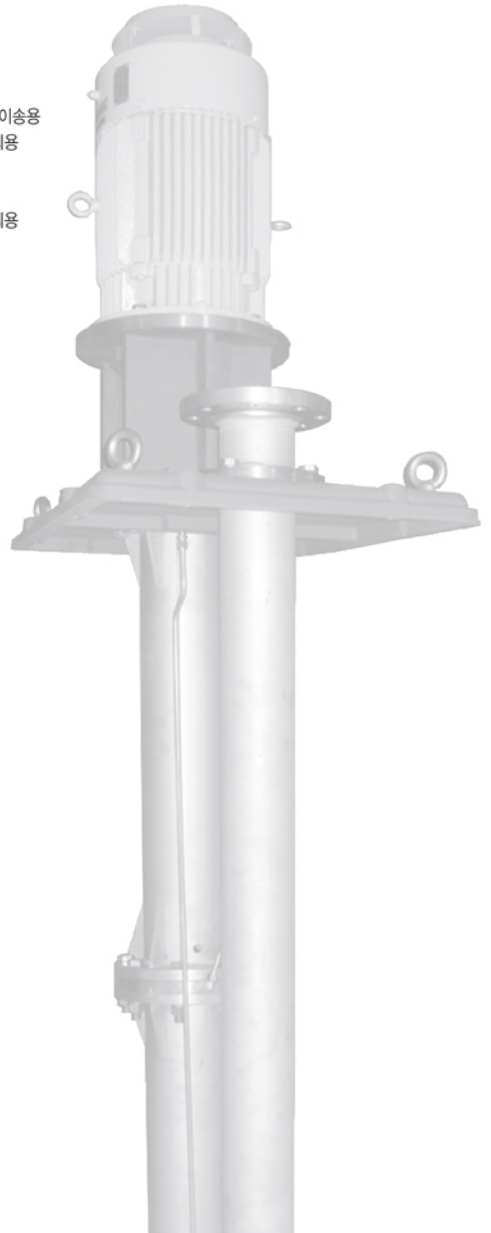
- Transfer of sump treated things
- Disposal of sewage
- Disposal of general wastewater
- Disposal of industrial wastewater
- Disposal of filthy water
- Sump 처리물 이송용
- 일반 폐수 처리용
- 오수용
- 하수 처리용
- 공장 폐수 처리용

Design & Structure Feature / 설계 및 구조적 특징

- Casting bed minimizes vibration during operation.
- Special journal bearing for preventing damage to the shaft.
- Strainer(STS) for better replacement.
- Fixed pump in pit for easy-bearing replacement.
- 주물베드 채용으로 진동을 극소화 하였습니다.
- 특수 저널 베어링을 설치하여 축의 손상을 방지하였습니다.
- Strainer(STS)가 부착되어 내구성이 뛰어 납니다.
- Pit에 펌프가 고정된 상태로 있어, 베어링을 쉽게 교체할 수 있습니다.

Advantages / 장점

- Excellent performance in transferring liquid especially mixed with solids, fibers and gases.
- Various types of pumps for various kinds of liquids
- Open-type impeller allows sludge that does not require sludge-cutter to transfer easily.
- 고행물, 섬유질이 혼합된 액체 및 가스가 함유된 액체 이송이 탁월합니다.
- 사용액체에 따라 적절한 재질의 펌프를 공급할 수 있습니다.
- 개방형 임펠러 채용으로 별도의 슬러지 분쇄기 없이 흡입구경을 통과할 수 있는 크기의 슬러지 이송이 탁월합니다.

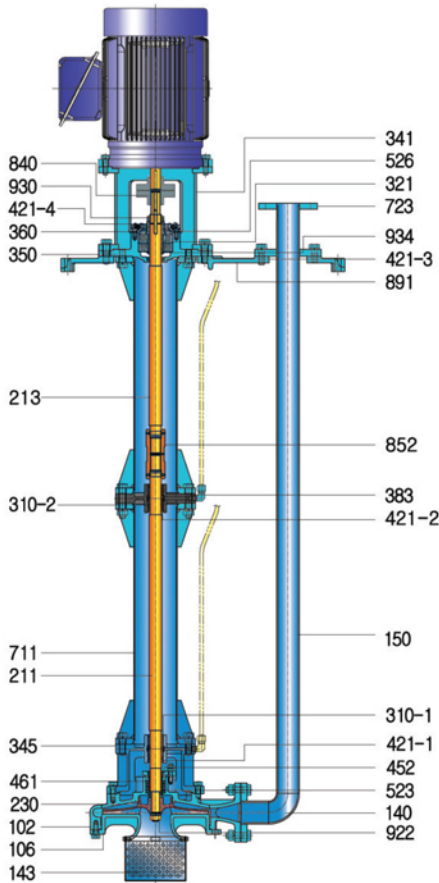


Sectional Drawing / 조립 단면도

GVO
Model Name
(펌프 모델명)

40
Discharge Bore
(토출구경)

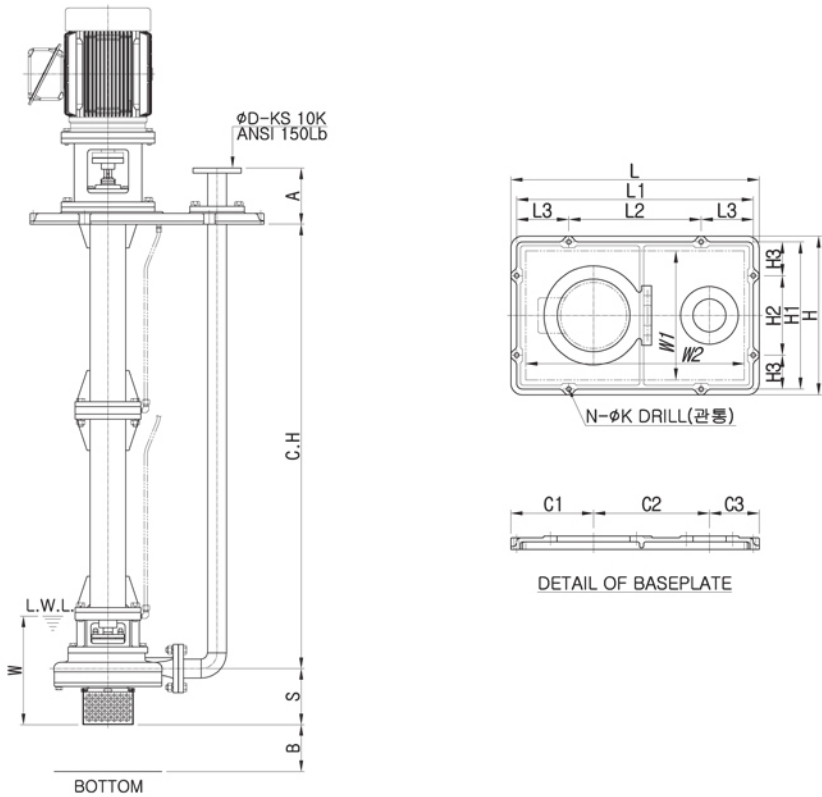
C
Total Head
(전양정)



Part No. (품번)	Part Name (부품명)	Standard Material (표준재질)		Q'ty (수량)
		ASTM	KS	
102	Volute Casing	A48-CL30	GC200	1
106	Suction Casing	A48-CL30	GC200	1
140	Discharge Elbow	A36+A53 Type F	SS400+SPP	1
143	Strainer	A276-304	STS304	1
150	Discharge Pipe	A36+A53 Type F	SS400+SPP	1
211	Line Shaft (Lower)	A108-1045	SM45C	1
213	Line Shaft (Upper)	A108-1045	SM45C	1
230	Impeller	A48-CL30	GC200	1
310-1	Sleeve Bearing	B584-C93800	CAC604	1
310-2	Sleeve Bearing	B584-C93800	CAC604	1
321	Angular Ball Bearing	A295-52100	STB2	2
341	Motor Frame	A48-CL30	GC200	1
345	Adapter	A48-CL30	GC200	1
350	Bearing Housing	A48-CL30	GC200	1
360	Bearing Cover	A48-CL30	GC200	1
383	Bearing Spider	A743-CF8	SSC13	1
421-1	Oil Seal	NBR	NBR	1
421-2	Oil Seal	NBR	NBR	1
421-3	Oil Seal	NBR	NBR	1
421-4	Oil Seal	NBR	NBR	1
452	Gland	A48-CL30	GC200	1
461	Packing	TEFLON	TEFLON	4
523	Shaft Sleeve	A276-304	STS304	1
526	Centering Sleeve	A108-1045	SM45C	1
711	Column Pipe	A36+A53 Type F	SS400+SPP	2
723	Flange	A36	SS400	1
840	Flange Coupling	A48-CL30	GC200	1 SET
852	Screwed Coupling	A108-1045	SM45C	1
891	Base Plate	A48-CL30	GC200	1
922	Impeller Nut	A276-304	STS304	1
930	Lock Nut	A108-1045	SM45C	1
934	Snap Ring	A686 Type W1 Gr. C	SK 5M	1



Outline Drawing / 외형 치수도



Model (형식)	Pump and Baseplate																			
	A	B	D	S	W	L	L1	L2	L3	H	H1	H2	H3	C1	C2	C3	W1	W2	N	K
GVO 40C	180	170	40	180	350	650	615	315	150	430	395	220	87.5	240	280	130	350	570	8	15
GVO 40D	180	170	40	180	350	750	715	400	157.5	480	445	240	102.5	250	350	150	390	660	8	15
GVO 50C	180	170	50	180	350	750	715	400	157.5	480	445	240	102.5	250	350	150	390	660	8	15
GVO 50D	180	170	50	180	350	750	715	400	157.5	480	445	240	102.5	250	350	150	390	660	8	15
GVO 50E	180	170	50	180	350	750	715	400	157.5	480	445	240	102.5	250	350	150	390	660	8	15
GVO 65C	180	200	65	200	400	750	715	400	157.5	480	445	240	102.5	250	350	150	390	660	8	15
GVO 65D	180	200	65	200	400	750	715	400	157.5	480	445	240	102.5	250	350	150	390	660	8	15
GVO 65E	180	200	65	200	400	900	870	450	210	580	550	300	125	300	430	170	480	800	8	19
GVO 80C	200	220	80	230	450	900	870	450	210	580	550	300	125	300	430	170	480	800	8	19
GVO 80D	200	220	80	230	450	900	870	450	210	580	550	300	125	300	430	170	480	800	8	19
GVO 80E	200	220	80	230	450	900	870	450	210	580	550	300	125	300	430	170	480	800	8	19
GVO 100C	200	240	100	260	530	900	870	450	210	580	550	300	125	300	430	170	480	800	8	19
GVO 100D	200	240	100	260	530	900	870	450	210	580	550	300	125	300	430	170	480	800	8	19
GVO 100E	200	240	100	260	530	1040	1000	530	235	630	590	315	137.5	320	530	190	530	940	8	19
GVO 125C	200	270	125	280	600	1040	1000	530	235	630	590	315	137.5	320	530	190	530	940	8	19
GVO 125D	200	270	125	280	600	1040	1000	530	235	630	590	315	137.5	320	530	190	530	940	8	19
GVO 125E	200	270	125	280	600	1160	1130	580	275	730	700	400	150	360	570	230	630	1060	8	23
GVO 150D	200	330	150	320	700	1160	1130	580	275	730	700	400	150	360	570	230	630	1060	8	23

* Note : All dimensions (millimeters) / Contact us for specific dimensions.

Selection Chart / 선정도

