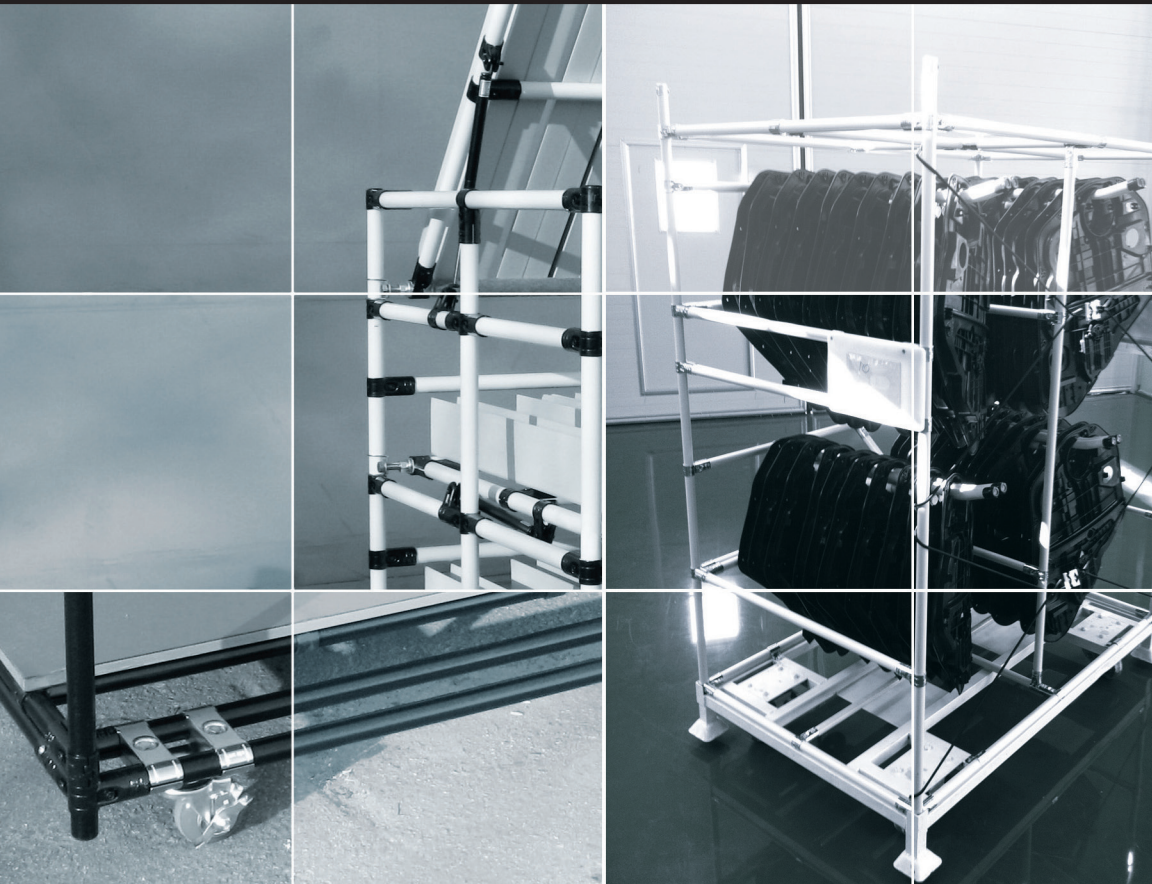


ACCESSORIES



MOUNTING BRACKETS
(SLIDE PIPE SERIES)

OTHERS

NAME-PLATE

BOX GUIDE

LEVELING FEET

PLASTIC CHANNEL

THREADED INSERTS
& INNER CAP

FASTENERS

Surface Treatment-WZ

- 33의 표시는 조인트 위에 고정할 수 있는 형태의 제품도 있음을 표시함
- 33의 Part No는 GP-A33, GP-B33 등으로 표시함

33

Unit : mm

GS-AN Slide Pipe Mount 33

의장 제0256327호

- Weight : 0.106kg
- Q'ty/Box : 100pcs

GS-BN Slide Pipe Mount / Tab Stop 33

의장 제0256328호

- Weight : 0.130kg
- Q'ty/Box : 70pcs

GS-B-1 Slide Pipe Mount / Tab Stop 33

- Weight : 0.116kg
- Q'ty/Box : 70pcs

GS-C Slide Pipe Mount Guide Bracket

- Weight : 0.085kg
- Q'ty/Box : 80pcs

GS-D Slide Pipe Mount / Drop Stop 33

- Weight : 0.116kg
- Q'ty/Box : 80pcs

GS-11 Adjustable Slide Pipe Union

- Weight : 0.073kg
- Q'ty/Box : 150pcs



- 33의 표시는 조인트 위에 고정할 수 있는 형태의 제품도 있음을 표시함
- 33의 Part No는 CM-330, CM-230 등으로 표시함

33

Surface Treatment-WZ

Unit : mm

CM-100 Caster Mount Strap **33:CM-330**

- Weight : 0.102kg
- Q'ty/Box : 150pcs

CM-200 Caster Mount Strap **33:CM-230**

- Weight : 0.107kg
- Q'ty/Box : 120pcs

CM-300 Caster Mount Strap

- Weight : 0.078kg
- Q'ty/Box : 300pcs

CM-A Corner Metal

- Weight : 0.100kg
- Q'ty/Box : 60pcs

CM-B Corner Metal

- Weight : 0.071kg
- Q'ty/Box : 60pcs

PC-A Base Lock Metal

- Weight : 0.063kg
- Q'ty/Box : 150pcs

PC-B Pipe Clamp(Single Mount)

- Weight : 0.020kg
- Q'ty/Box : 300pcs

PC-C Pipe Clamp(Double Mount)

- Weight : 0.026kg
- Q'ty/Box : 200pcs

PC-D Pipe Lock Metal

- Weight : 0.157kg
- Q'ty/Box : 50pcs

PC-E Pipe Clamp

- Weight : 0.012kg
- Q'ty/Box : 600pcs

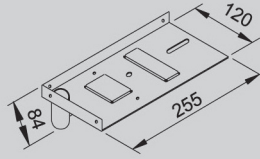
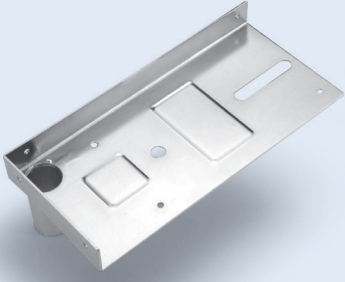
ACCESSORIES

SLIDE PIPE MOUNTING BRACKET

Surface Treatment-WZ

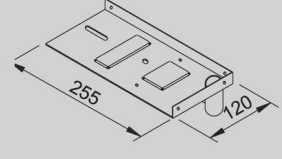
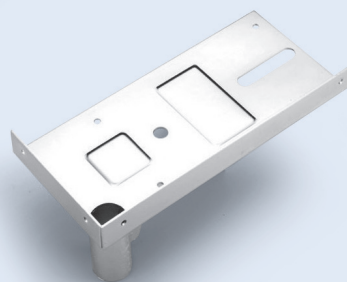
Unit : mm

CS28L Corner Support



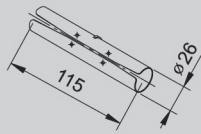
- Weight : 0.682kg
- Q'ty/Box : 24pcs

CS28R Corner Support



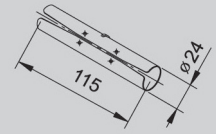
- Weight : 0.750kg
- Q'ty/Box : 24pcs

LK28S Pipe Connector(SUS/Eco Pipe)



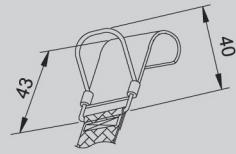
- Weight : 0.046kg
- Q'ty/Box : 120pcs

LK28A Pipe Connector(Coated Pipe)



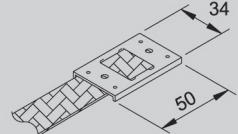
- Weight : 0.046kg
- Q'ty/Box : 120pcs

HM28YA Hanger Metal



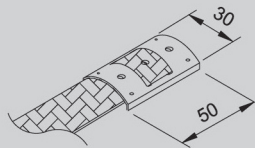
- Weight : 0.049kg
- Q'ty/Box : 100pcs

F-A Handle(Flat Type)



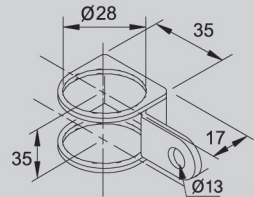
- Weight : 0.020kg
- Q'ty/Box : 500pcs

R-A Handle(Round Type)-L400



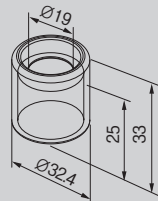
- Weight : 0.020kg
- Q'ty/Box : 400pcs

HG-D Hinge Metal



- Weight : 0.052kg
- Q'ty/Box : 100pcs

NEW **TC-28** Tool Cap



- Weight : 0.011kg
- Q'ty/Box : 600pcs



Surface Treatment-WZ / BK

Unit : mm

TH40PA Tool Holder-Plastic

- Weight : 0.080kg
- Q'ty/Box : 50pcs

TH50PA Tool Holder-Plastic

- Weight : 0.074kg
- Q'ty/Box : 50pcs

TH50YA Tool Holder

- Weight : 0.108kg
- Q'ty/Box : 25pcs

TH65YA Tool Holder

- Weight : 0.197kg
- Q'ty/Box : 25pcs

MCP-B-L Mount Corner Plate-Left

- Weight : 1.274kg
- Q'ty/Box : 12pcs

MCP-B-R Mount Corner Plate-Right

- Weight : 1.274kg
- Q'ty/Box : 12pcs

MCP-C Mount Center Plate

- Weight : 1.28kg
- Q'ty/Box : 12pcs

FG-01 Fork Guide

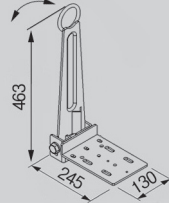
- Weight : 2.44kg
- Q'ty/Box : 2pcs



Surface Treatment-WZ

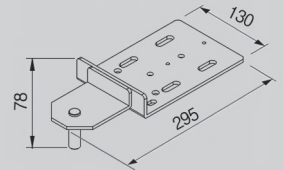
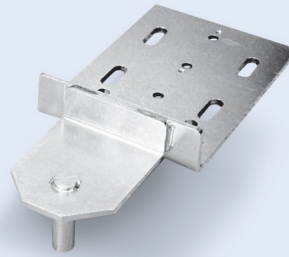
Unit : mm

FS-A Front Haul Ass'y-Spring Type



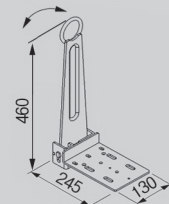
- Weight : 3.40kg
- Q'ty/Box : 4pcs

RS-A Rear Haul Ass'y-Spring Type



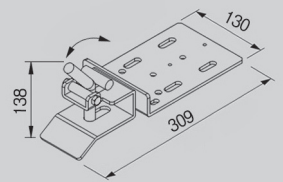
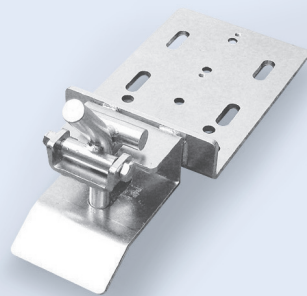
- Weight : 1.50kg
- Q'ty/Box : 4pcs

FQ-B Front Haul Ass'y-Quicking Type



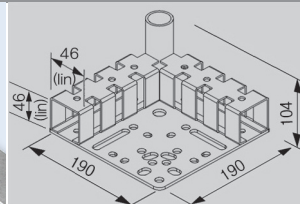
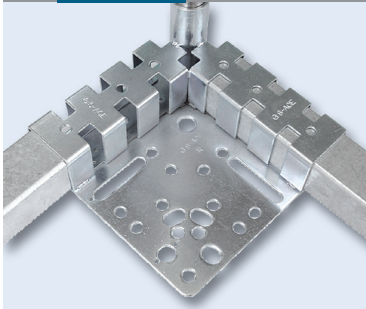
- Weight : 3.10kg
- Q'ty/Box : 4pcs

RQ-B Rear Haul Ass'y-Quicking Type



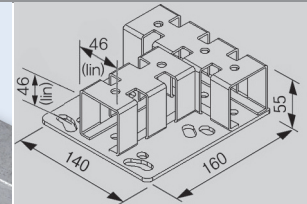
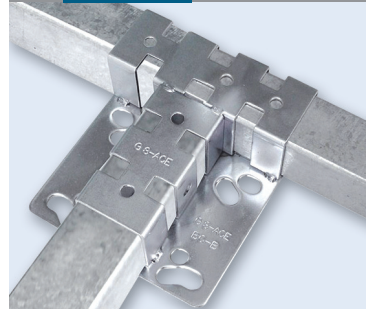
- Weight : 2.10kg
- Q'ty/Box : 4pcs

BC45-A Base Corner



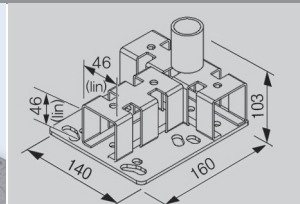
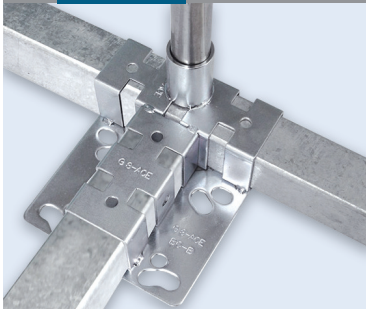
- Weight : 1.85kg
- Q'ty/Box : 8pcs

BC45-B Base Center



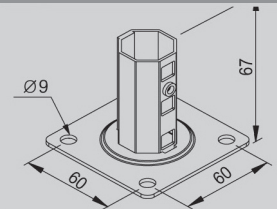
- Weight : 1.17kg
- Q'ty/Box : 4pcs

BC45-C Base Center



- Weight : 1.28kg
- Q'ty/Box : 4pcs

AD-SM Stanchion Mount Single



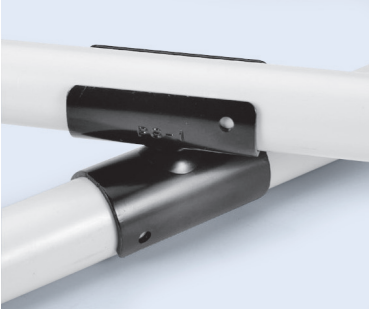
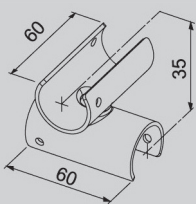
- Weight : 0.198kg
- Q'ty/Box : 20pcs



Surface Treatment-WZ / BK


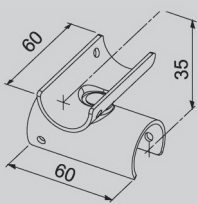
Unit : mm

PS-A Rotating Cross Joint


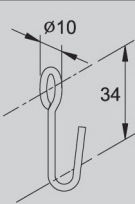
- Weight : 0.128kg
- Q'ty/Box : 96pcs

PS-B Rotating Cross Joint


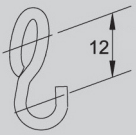
- Weight : 0.104kg
- Q'ty/Box : 96pcs

BH-A Band Hook


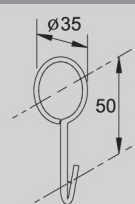
- Weight : 0.001kg
- Q'ty/Box : 1,000pcs

BH-B Band Hook

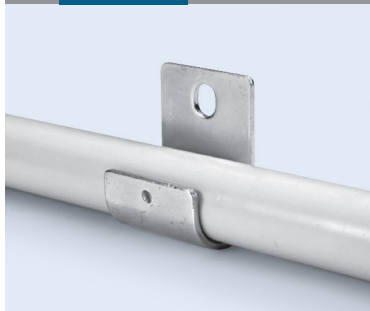
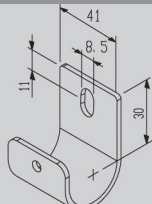
- Weight : 0.001kg
- Q'ty/Box : 2,000pcs

PH-A Hanger

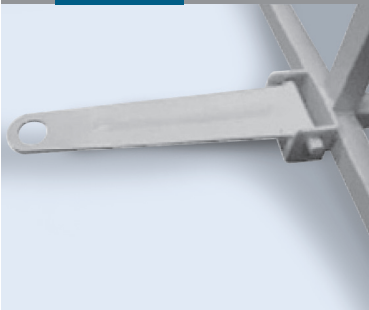
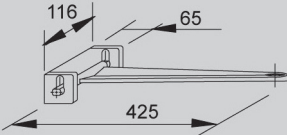
- Weight : 0.001kg
- Q'ty/Box : 500pcs

BL28YA-U Pipe Holder


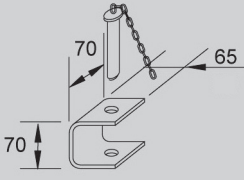
- Weight : 0.069kg
- Q'ty/Box : 150pcs

FH-A Front Haul Ring-A


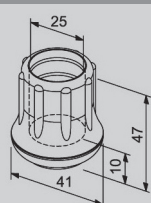
- Q'ty/Box : 5pcs

FH-B Rear Haul Ring-B

- Q'ty/Box : 10pcs


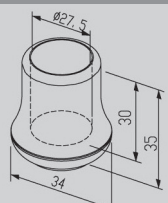
RF-01 Rubber Foot

- Weight : 0.035kg
- Q'ty/Box : 250pcs

RF-01 : Normal (D/Gray)
RF-01E : ESD (Black)

RF-02 Rubber Foot

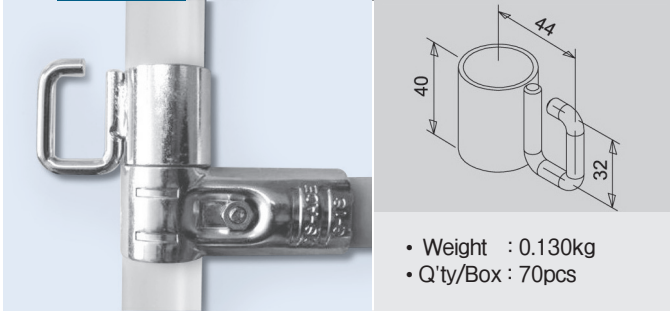



- Weight : 0.011kg
- Q'ty/Box : 450pcs

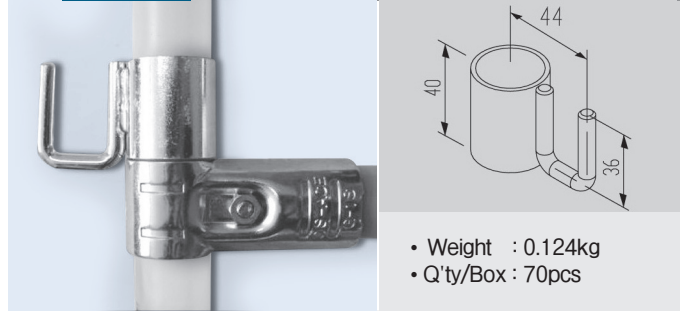
Surface Treatment-WZ

Unit : mm

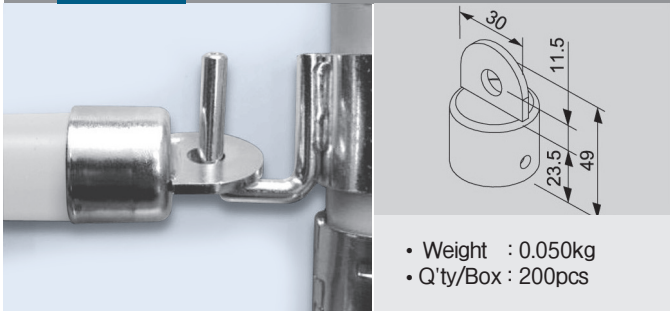
GS-1014A Sleeve Hanger



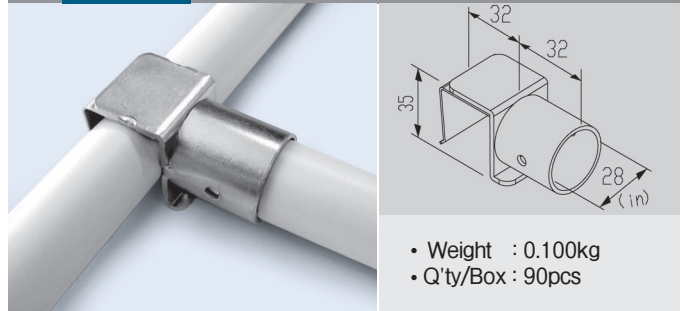
GS-1014B Sleeve Hanger



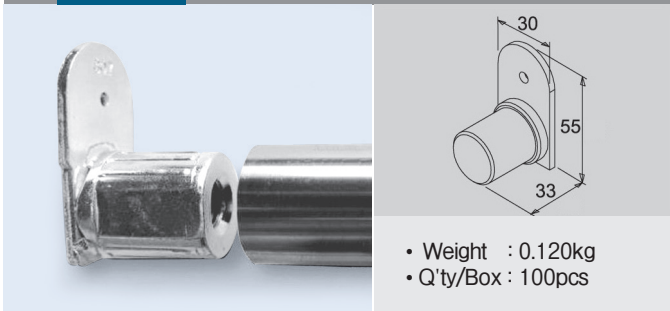
GS-1014C Sleeve Hanger



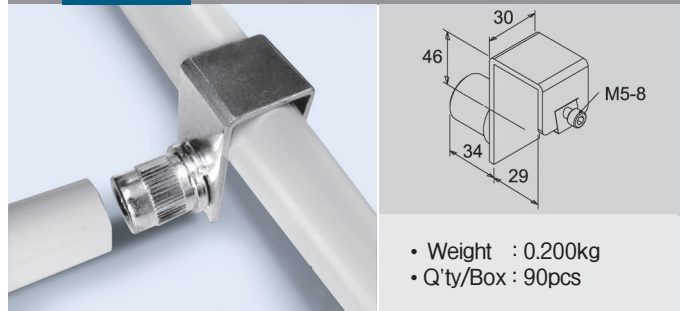
GS-1250A End Snap Rest



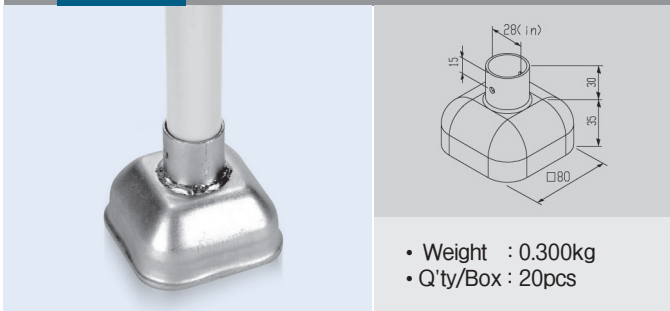
GS-2070C Pipe Plug



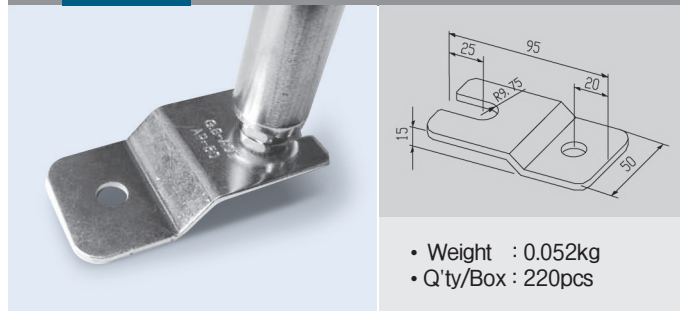
GS-2070D Slide Pipe Plug



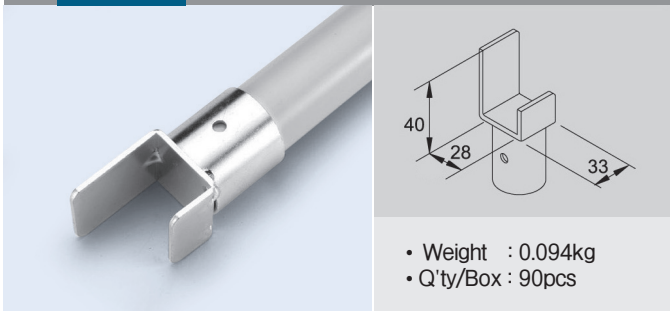
HC28A Hole Cup-A



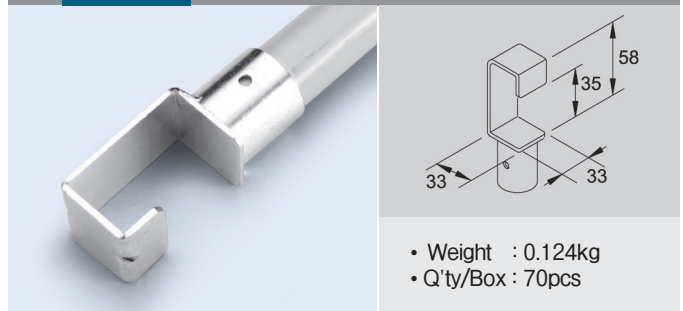
AP-50 Anchor Plate



HK28WA Pipe Rest



HK28WB Pipe Rest



Surface Treatment-WZ / BK

Unit : mm

BUSH-12 Sleeve Busing(Metal)

- Weight : 0.035kg
- Q'ty/Box : 180pcs

FB-28 Folding Bracket

- Weight : 0.155kg
- Q'ty/Box : 48pcs

MB-15 Monitor Bracket

- Weight : 0.350kg
- Q'ty/Box : 20pcs

DL-15 Door Latch

- Weight : 0.305kg
- Q'ty/Box : 40pcs

BS-15 Back Stopper Bracket

- Weight : 0.105kg
- Q'ty/Box : 60pcs

G-15AC Back Stopper Bracket

- Weight : 0.032kg
- Q'ty/Box : 500pcs

PHR-28 Hang Roller

- Weight : 0.040kg
- Q'ty/Box : 100pcs

BS-01 Box-Stopper (CM-200과 조립하여 사용)

- Weight : 1.78kg
- Q'ty/Box : 8pcs

NEW **QS-28** Quick Stopper

- Weight : 0.370kg
- Q'ty/Box : 18pcs

NEW **CP-32** Cover Pulley

- Weight : 0.004kg
- Q'ty/Box : 3000pcs

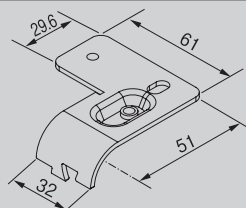
ACCESSORIES

OTHER

Surface Treatment-WZ / BK

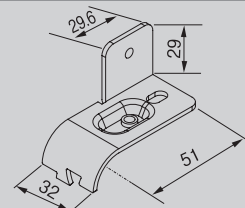
Unit : mm

GRH-15R Pulley Holder BKT Right



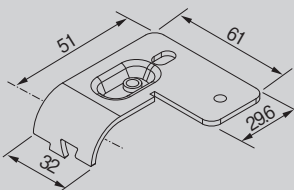
- Weight : 0.055kg
- Q'ty/Box : 270pcs

GRV-15R Pulley Holder BKT Right



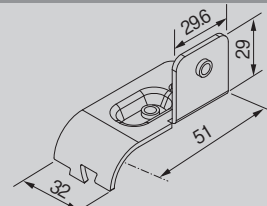
- Weight : 0.055kg
- Q'ty/Box : 240pcs

GRH-15L Pulley Holder BKT Left



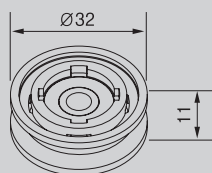
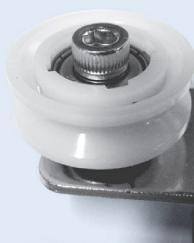
- Weight : 0.055kg
- Q'ty/Box : 270pcs

GRV-15L Pulley Holder BKT Left



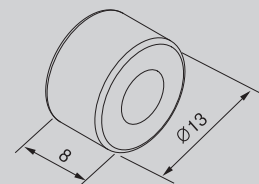
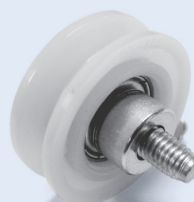
- Weight : 0.055kg
- Q'ty/Box : 240pcs

BRA-32 Bearing Pulley



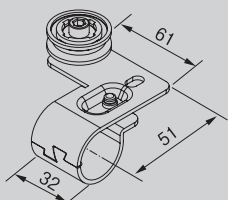
- Weight : 0.012kg
- Q'ty/Box : 1,000pcs

GB-02 Gap Bushing



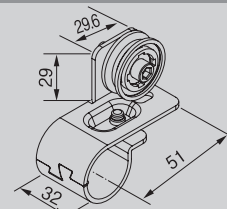
- Weight : 0.006kg
- Q'ty/Box : 2,000pcs

GRH-15R Ass'y Bearing Pulley Ass'y Right



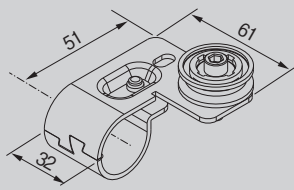
- GRH-15R:1pcs, G-15BS:1pcs
BRA-32:1pcs, GB-02:1pcs
M0625:1pcs, M0610:1PCS

GRV-15R Ass'y Bearing Pulley Ass'y Right



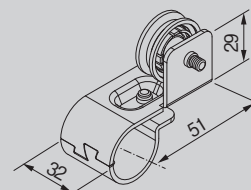
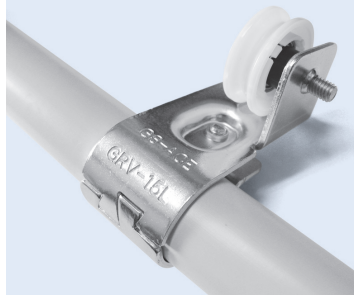
- GRV-15R:1pcs, G-15BS:1pcs
BRA-32:1pcs, GB-02:1pcs
M0625:1pcs, M0610:1pcs

GRH-15L Ass'y Bearing Pulley Ass'y Left



- GRH-15L:1pcs, G-15BS:1pcs
BRA-32:1pcs, GB-02:1pcs
M0625:1pcs, M0610:1pcs

GRV-15L Ass'y Bearing Pulley Ass'y Left

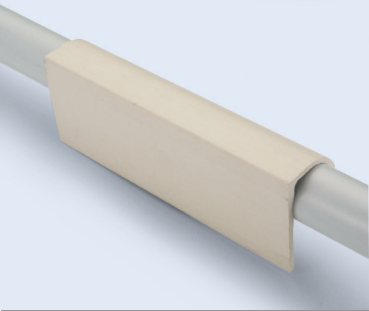
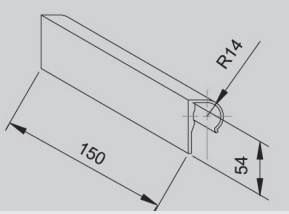


- GRV-15L:1pcs, G-15BS:1pcs
BRA-32:1pcs, GB-02:1pcs
M0625:1pcs, M0610:1pcs

Material-PVC

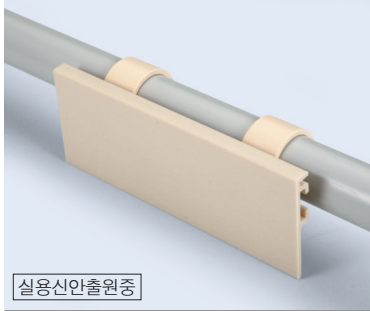
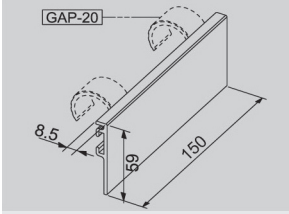
Unit : mm

NP-A Name Plate

- Weight : 0.079kg
- Q'ty/Box : 180pcs

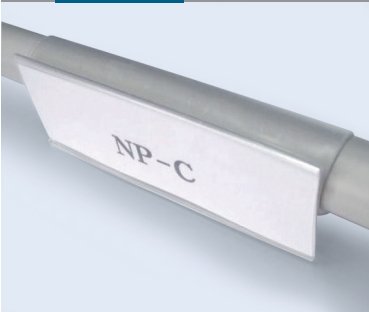
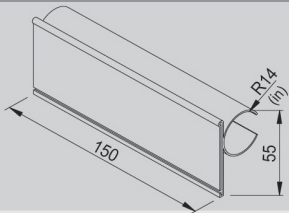
NP-B Name Plate

- Weight : 0.047kg
- Q'ty/Box : 360pcs


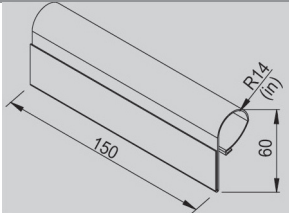
Material-PAT

NP-C Name Plate

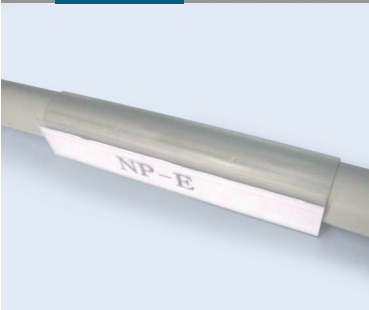
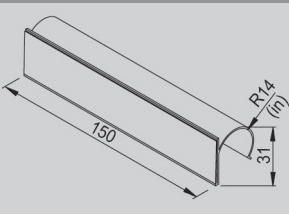
- Weight : 0.035kg
- Q'ty/Box : 190pcs

NP-D Name Plate


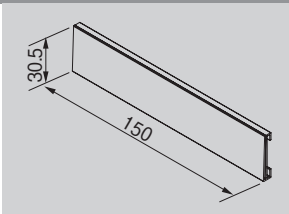
- Weight : 0.032kg
- Q'ty/Box : 190pcs

NP-E Name Plate


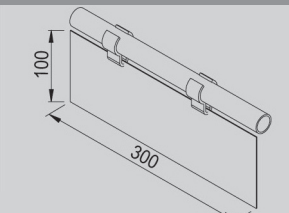
- Weight : 0.023kg
- Q'ty/Box : 450pcs

NP-F Name Plate

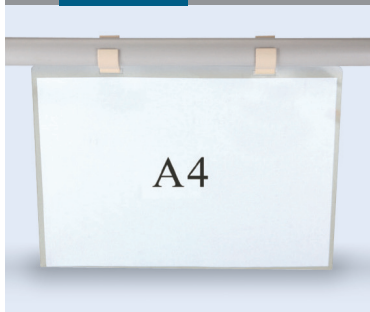
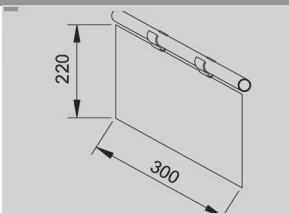
- Weight : 0.017kg
- Q'ty/Box : 1,000pcs

LA Label Case


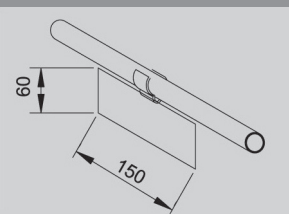
- Weight : 0.044kg
- Q'ty/Box : 300pcs

LA-C Label Case


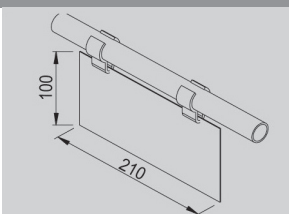
- Weight : 0.050kg
- Q'ty/Box : 200pcs

LA-D Label Case

- Weight : 0.012kg
- Q'ty/Box : 300pcs

LA-E Label Case

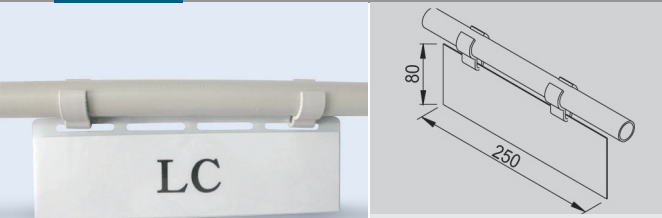
- Weight : 0.027kg
- Q'ty/Box : 300pcs

ACCESSORIES

OTHER

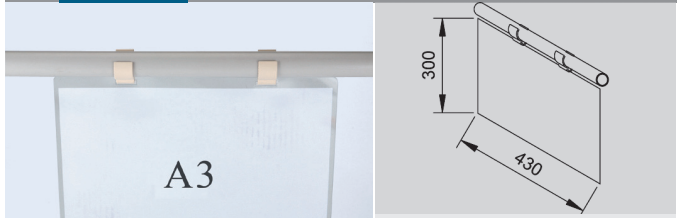
Unit : mm

LC Label Case



- Weight : 0.027kg
- Q'ty/Box : 300pcs

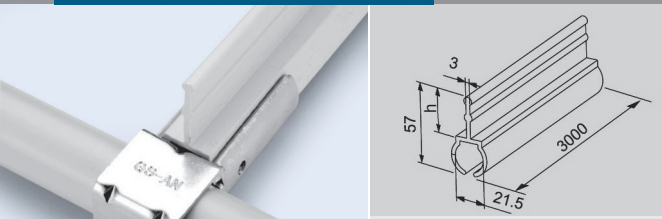
LA-A3 Label Case



- Weight : 0.170kg
- Q'ty/Box : 200pcs

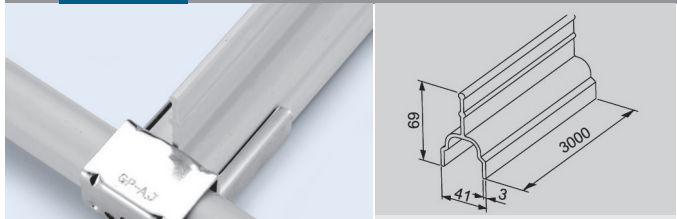
Material-PVC

SG-28A(h:30) / SG-2860A(h:60) Box Guide



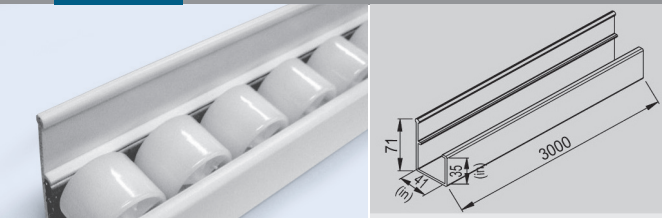
- Weight : 0.38kg/m

RG-40A Box Guide



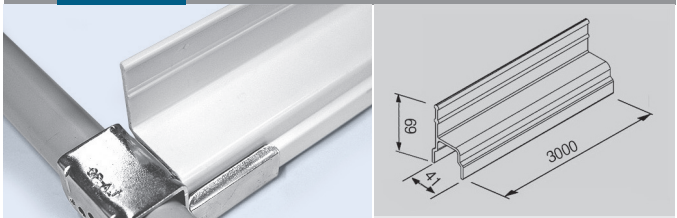
- PVC Weight : 0.50kg/m

RG-40C Box Guide

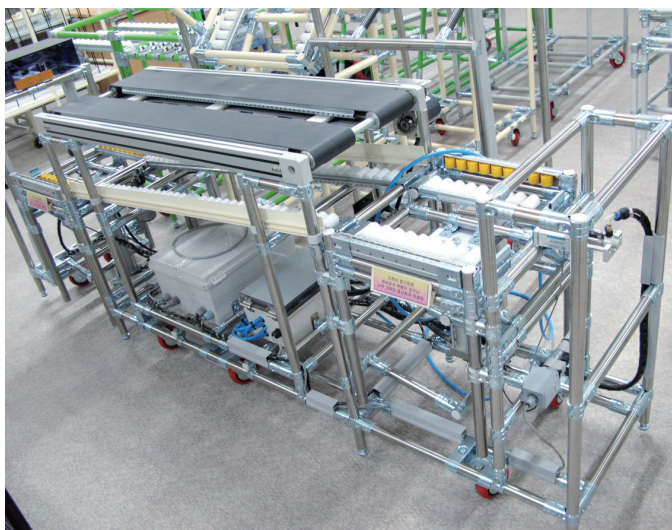


- PVC Weight : 0.70kg/m

RG-40D Box Guide



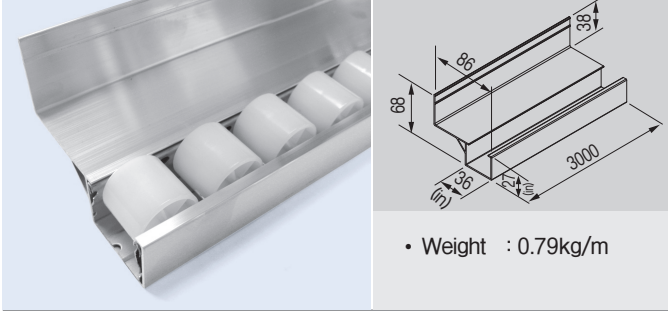
- Weight : 0.57kg/m



Unit : mm

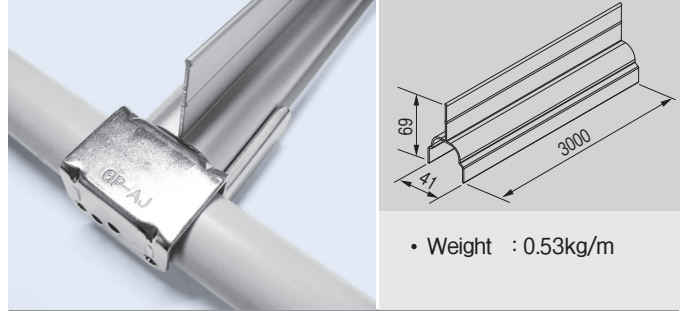
Material-Alumium

ARG-35B Box Guide- ELF



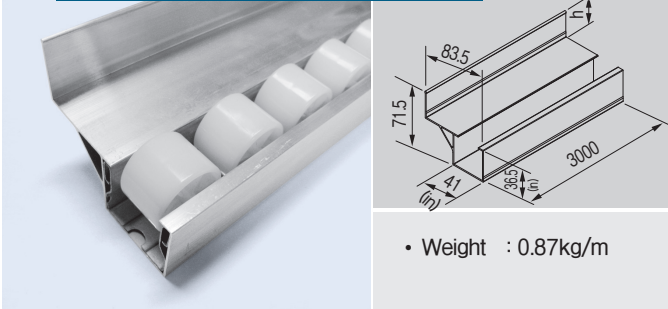
• Weight : 0.79kg/m

ARG-40A Box Guide- ELF



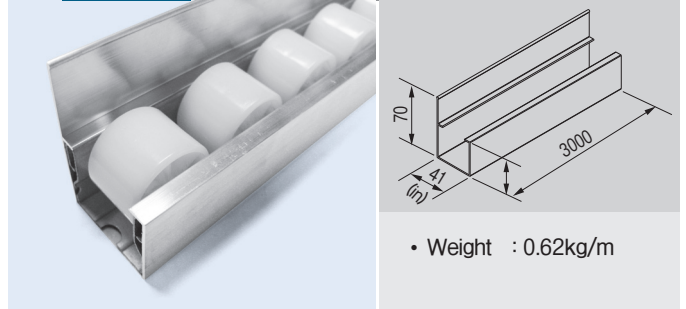
• Weight : 0.53kg/m

ARG-4030BL(h:30) / ARG4045BL(h:45) Box Guide- ELF



• Weight : 0.87kg/m

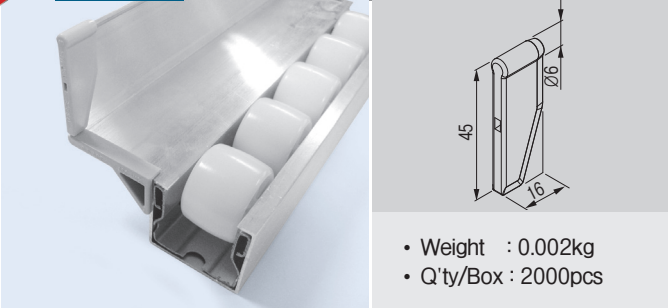
ARG-40C Box Guide- ELF



• Weight : 0.62kg/m

NEW

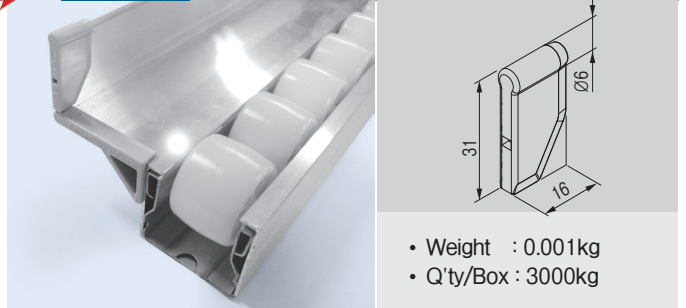
ASC-V45 Vertical Safety Cap



• Weight : 0.002kg
• Q'ty/Box : 2000pcs

NEW

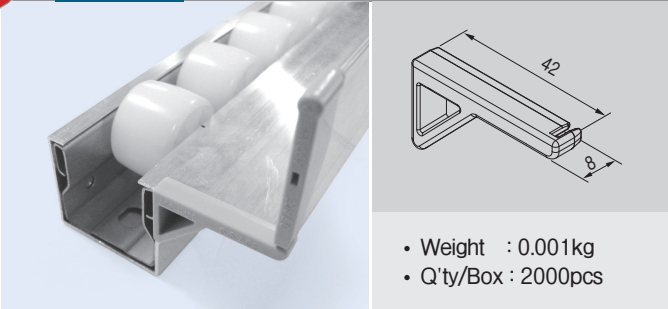
ASC-V30 Vertical Safety Cap



• Weight : 0.001kg
• Q'ty/Box : 3000kg

NEW

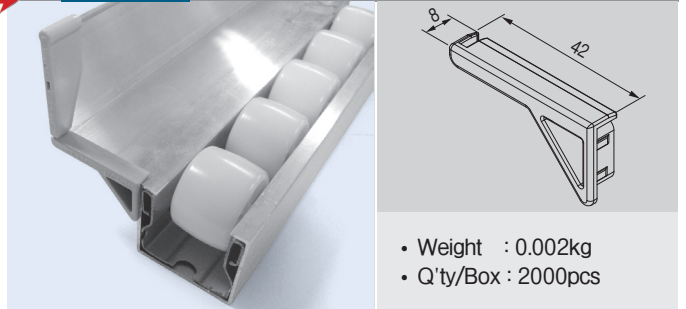
ASC-H42R Horizontal Safety Cap



• Weight : 0.001kg
• Q'ty/Box : 2000pcs

NEW

ASC-H42L Horizontal Safety Cap



• Weight : 0.002kg
• Q'ty/Box : 2000pcs



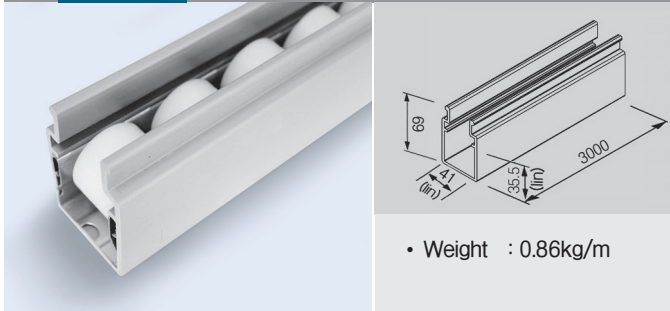
ACCESSORIES

OTHER

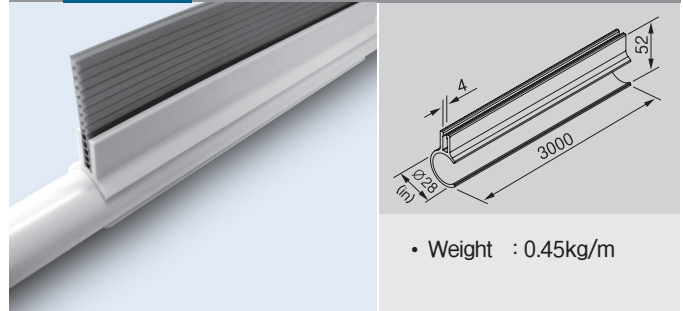
Material-PVC

Unit : mm

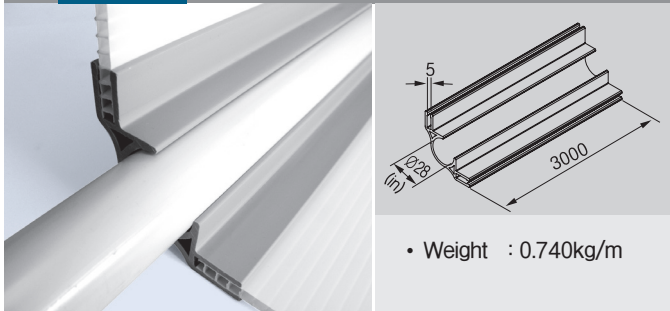
RG-40E Box Guide



SG-01 Sheet Guide



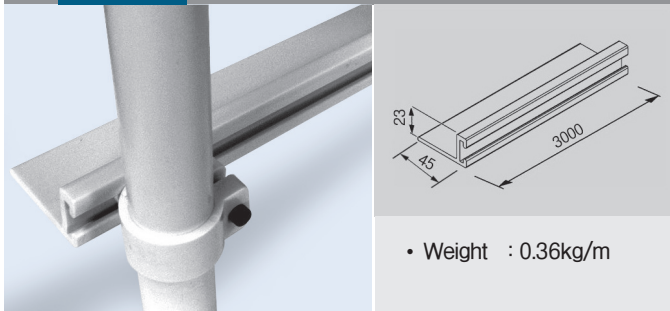
SG-02 Sheet Guide



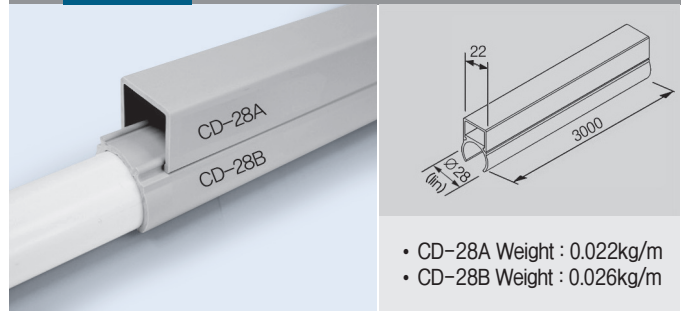
SG-03 Sheet Guide



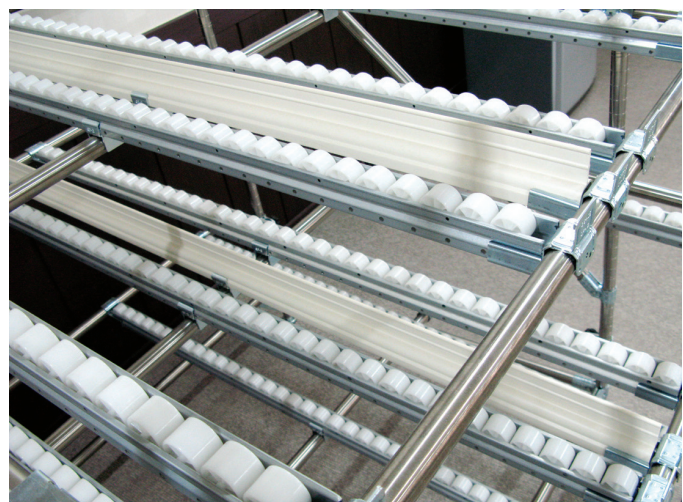
DP-A Dust Plate



CD-28A/B Cable Duct



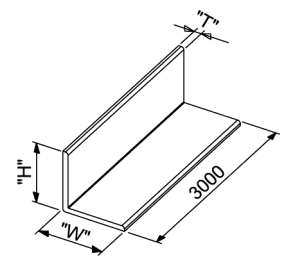
ACCESSORIES



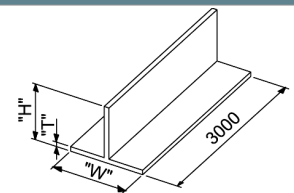
Material-PVC

Unit : mm

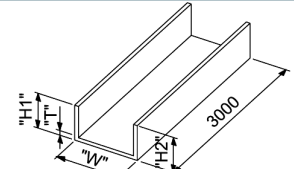
L-Type

Part No		Thickness	H	W	Configuration
Normal	ESD				
AL-1	EAL-1	3	30	50	
AL-2	EAL-2	4	30	60	
AL-9	EAL-9	4	30	75	
AL-5B	EAL-5B	4	50	50	
AL-6B	EAL-6B	4	50	75	
AL-8	EAL-8	4	50	100	
AL-7B	EAL-7B	4	50	150	
AL-4	EAL-4	4	80	90	
AL-5	EAL-5	5	50	50	
AL-6	EAL-6	5	50	75	
AL-7	EAL-7	5	50	150	

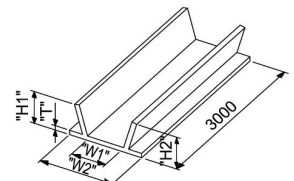
T-Type

Part No		Thickness	H	W	Configuration
Normal	ESD				
AT-1	EAT-1	4	50	100	
AT-2	EAT-2	4	100	60	
AT-3	EAT-3	4	150	60	

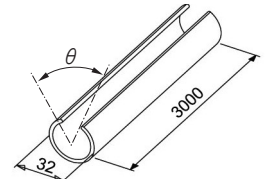
U-Type

Part No		Thickness	W1	W2	H1	H2	Configuration
Normal	ESD						
AU-1	EAU-1	3	36	-	36	36	
AU-2	EAU-2	3	60	-	30	40	

S-Type

Part No		Thickness	W1	W2	H1	H2	Configuration
Normal	ESD						
AS-1	EAS-1	4	32	70	34	25	
AS-2	EAS-2	5	22	60	30	30	
AS-3	EAS-3	4	17	50	30	30	

Pipe-Cover

Part No		Thickness	θ	-	-	-	Configuration
Normal	ESD						
PC-01	EPC-01	2.5	75°	-	-	-	
PC-02	EPC-02	2.5	135°	-	-	-	


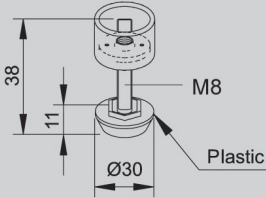
ACCESSORIES

OTHER

Material-WZ


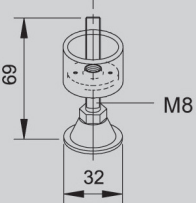
■ Small-Type

AD30PA LEVELING FOOT


- Weight : 0.035kg
- Q'ty/Box : 150pcs

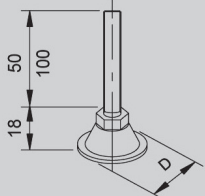
AD32WA LEVELING FOOT





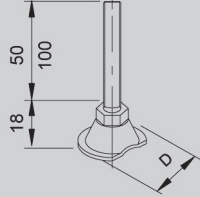
- Weight : 0.053kg
- Q'ty/Box : 125pcs

■ Normal-Type




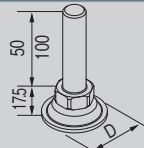
Part No	Base Diameter	Threaded Spec	Threaded Length	ESD	Type
AD32WB	Ø32	1/2"-12N	50	○	
AD32WC			100	○	



Part No	Base Diameter	Threaded Spec	Threaded Length	ESD	Type
AD50WA	Ø50	1/2"-12N	50	○	
AD50WB			100	○	

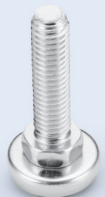
■ STS-Type (Pad 별도 부착 사양 - Rubber는 별도 공급)

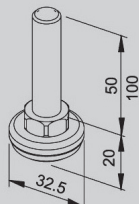


Part No	Base Diameter	Threaded Spec	Threaded Length	ESD	Type
AD35SA	Ø35	1/2"-12N	50	○	
AD35SB			100	○	
AD40SPA	Ø40	1/2"-12N (Rubber Type)	50	○	
AD40SPB			100	○	


■ Rubber Pad-Type

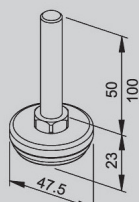
특허등록




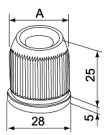
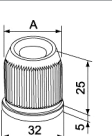
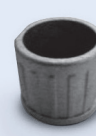
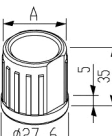

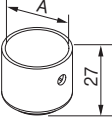
Part No	Base Diameter	Threaded Spec	Threaded Length	ESD	Type
AD32RA	Ø32	1/2"-12N	50	×	
AD32RA-E			50	○	
AD32RB			100	×	
AD32RB-E			100	○	

특허등록

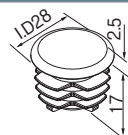
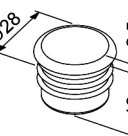
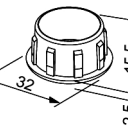


Part No	Base Diameter	Threaded Spec	Threaded Length	ESD	Type
AD50RAN	Ø50	1/2"-12N	50	×	
AD50RAN-E			50	○	
AD50RBN			100	×	
AD50RBN-E			100	○	

Thread Inserts

	Part No	Classification	Application	Colors	Threaded Spec	Material	A	Dimension
	BC2807A	Coated Pipe	Ø28×T0.7	White	1/2"-12N	Steel	Ø24.1	
	BC2807B			White	M12-P1.75	Steel		
	BC2807C			Gray	1/2"-12N	Plastic		
	BC2810A		Ø28×T1.0	White	1/2"-12N	Steel	Ø23.5	
	BC2810B			White	M12-P1.75	Steel		
	BC2810C			Gray	1/2"-12N	Plastic		
	BC2820A		Ø28×T2.0	White	1/2"-12N	Steel	Ø21.9	
	BC2820B				M12-P1.75	Steel		
	BS07A		Ø28×T0.7	White	1/2"-12N	Steel	Ø26.8	
	BS07B	M12-P1.75			Steel			
	BS07D	M10-P1.5			Steel			
	BS10A	STS Pipe ECO Pipe	Ø28×T1.0	White	1/2"-12N	Steel	Ø26.1	
	BS10B				M12-P1.75	Steel		
	BS12A		Ø28×T1.2	White	1/2"-12N	Steel	Ø25.5	
	BS12B	M12-P1.75			Steel			
BS12D	M10-P1.5	Steel						
BC3210A	Coated Pipe	Ø32×T1.0	White	1/2"-12N	Steel	Ø27.5		
BC3210B				M12-P1.75	Steel			
	AS2807A	STS Pipe ECO Pipe	Ø28×T0.7	Gray	1/2"-12N	Aluminum	Ø26.5	
	AS2807B				M12-P1.75			
	AC2809A	Coated Pipe	Ø28×T1.0		1/2"-12N		Ø23.8	
	AC2809B				M12-P1.75			
	AC2814A	Ø28×T1.4	1/2"-12N		Ø22.8			
	AC2814B		M12-P1.75					
	OB28AN	All Pipe	Ø28	White	1/2"-12N	Steel	Ø27.7	
	OB28BN				M12-P1.75			

Inner Cap

	Classification	Part No	Colors	Marking	Material	Dimension
Ø28	All Thickness Pipe (Coated & STS Pipe공용)	GAP-4P-i	Ivory	GAP-4P	Plastic	
		GAP-4P-B	Black			
		GAP-4P-G	Gray			
	Coated Pipe	GAP-4C-i	Ivory	GAP-4C		
		GAP-4C-B	Black			
		GAP-4C-G	Gray			
	STS Pipe ECO Pipe	GAP-4S-i	Ivory	GAP-4S		
		GAP-4S-B	Black			
		GAP-4S-G	Gray			
Ø32	Coated Pipe	GAP-4310-i	Ivory	GAP-4310		
		GAP-4310-B	Black			
		GAP-4310-G	Gray			

EWS-() WORK STOPPER

STANDARD TYPE (Material-ST5)



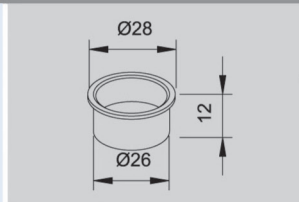
Part No	Model	Weight	Q'ty/BOX
EWS-A	GP4036A/4036B	0.056kg	240pcs
EWS-B	GP4050C	0.041kg	300pcs
EWS-C	GP8550B	0.136kg	70pcs
EWS-D	GP4050D	0.061kg	160pcs
EWS-E	GP3533B	0.036kg	320pcs
EWS-F	GP6033B	0.085kg	170pcs
EWS-F2	GP6033B(2Roller)	0.046kg	110pcs
EWS-G	GP4040A/B	0.085kg	240pcs
EWS-G2	GP4040A/B(2Roller)	0.036kg	140pcs
EWS-H	GP7040B/8540L	0.130kg	120pcs
EWS-J	GP6016S	0.078kg	200pcs
EWS-K	GP8543B/HA	0.140kg	90pcs

SPECIAL TYPE (Material-ST5)



Part No	Model	Weight	Q'ty/BOX
EWS-AN	GP4036A/4036B	0.086kg	250pcs
EWS-GN	GP4040A/B	0.056kg	250pcs
EWS-MN	GPR8545B/HA	0.155kg	30pcs

GAS-07S STEEL CAP

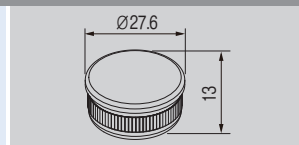


- Weight : 0.009kg
- Q'ty/BOX : 600pcs

Part No	Pipe	Diameter	Remark
GAS-07A	Coated Pipe	Ø28 x t 0.7	WZ
GAS-10A		Ø28 x t 1.0	WZ
GAS-07S	STS/Eco Pipe	Ø28 x t 0.7	WZ
GAS-12S		Ø28 x t 1.2	WZ



GAM-07S METAL CAP

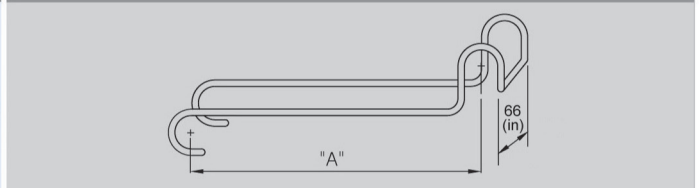
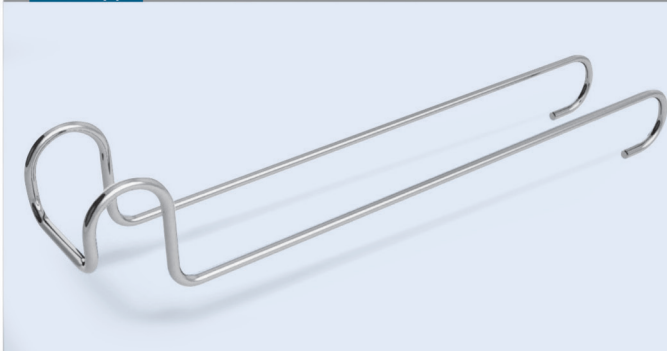


- Weight : 0.037kg
- Q'ty/Box : 500pcs


Part No	Pipe	Diameter	Remark
GAM-07S	STS Pipe	Ø28 X t0.7	WZ

Surface Treatment - WZ

WR-() WIRE RACKS



Part No	Pipe	A	Weight	Q'ty/Box
WR-200	Ø28	235	0.182	25
WR-300		335	0.230	80
WR-400		435	0.271	30

Fastener Type	Part No	Item	Spec	Color	Usage	Fastener Type	Part No	Item	Spec	Color	Usage	
	TN06W	T-Nut	M6	White	Metal Joint		M0610W	M6x10	P 1.0	White	Metal Joint	
	TN06B		M6	Black			P 1.0		Black			
	SW10W	Spring Washer	M10	White	M10Bolt		M0625W	M6x25	P 1.0	White	Metal Joint	
	SW13W		M12	White	M12Bolt		M0625B		P 1.0	Black		
	PW05W	Flat Washer	M5	White	M5Bolt		M0630W	M6x30	P 1.0	White	Metal Joint	
	PW10W		M10	White	M10Bolt		M0630B		P 1.0	Black		
	NN06W	Nylon Nut	M6	White	M6Bolt		M1020W	M10Bolt	L20	White	Caster	
	NN08W		M8		M8Bolt							
	NN10W		M10		M10Bolt							
	NN12W		M12		M12Bolt							
	NN05W-i	inch Nylon Nut	1/2"-12N	inch Bolt								
	N06W	Nut	M6	White	M6Bolt		GM835W	M8Bolt	L35xP1.25	White	Caster	
	Ni05W-12	inch Nut	1/2"-12N	White	inchBolt		GM840W		L40xP1.25			
	Gi0532W-12	inch Bolt 32mm	1/2"-12N	White	Caster		GM845W	M8Bolt	L45xP1.25	White		Base Lock Metal
	Gi0575W-12	inch Bolt 75mm	1/2"-12N	White	Base Lock Metal		GM850W		L50xP1.25			
	GM860W	L60xP1.25										
GM870W	L70xP1.25											
	HM0620	KNOB Bolt	P1.0	Black	Metal Joint							

