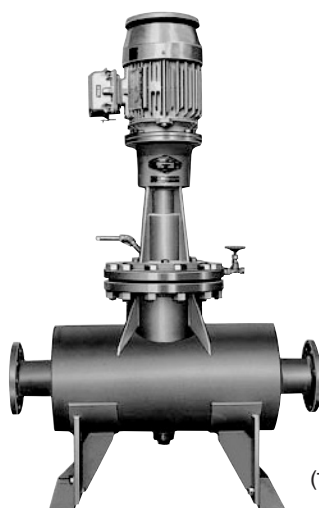
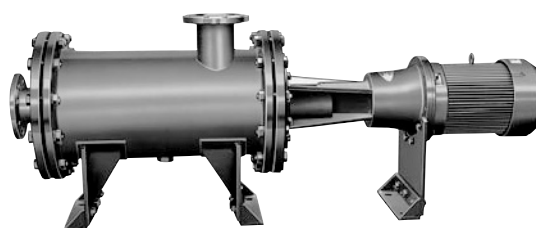


MULTI LINE MIXERS

Registered utility model

Multi line mixer
(Top-mount type)Multi line mixer
(Side-mount type)

■ Specifications

Model	Motor				Applicable viscosity (mPa · s)	Processing amount (m³/h)
	Output (kW)	No. of poles (P)	Speed(rpm)			
			50Hz	60Hz		
MS14-MPR (Side-mount type)	0.4	4	1,450	1,750	1 ~ 3,000	10 ~ 0.6
MT14-MPR (Top-mount type)	0.75				1 ~ 10,000	18 ~ 0.6
	1.5				1 ~ 20,000	32 ~ 0.6
MS24-MPR	2.2	4	1,450	1,750	1 ~ 30,000	45 ~ 0.8
MT24-MPR	3.7				1 ~ 50,000	70 ~ 1.0
MS26-MPR MT26-MPR	5.5	6	960	1,150	1 ~ 50,000	120 ~ 1.6
L 86-MPR	7.5	6	960	1,150	1 ~ 50,000	160 ~ 2.0
L 76-MPR	11					220 ~ 3.0
L 88-MPR L 78-MPR	15	8	730	880	1 ~ 50,000	300 ~ 4.0
	18.5					370 ~ 4.8
	22					450 ~ 6.0
	30					540 ~ 7.0
	37					600 ~ 8.0
	45					720 ~ 9.5
	55	800 ~ 10.0				

Installed in existing pipelines for continuous, high-shear mixing

■ Features

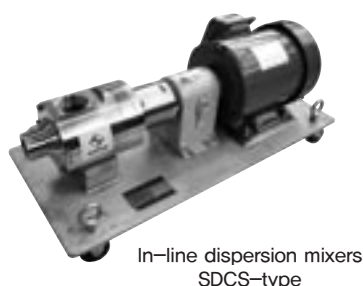
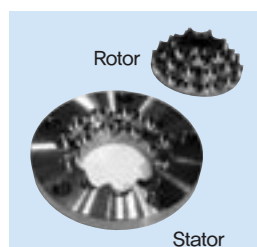
- Can be used with both horizontal and vertical pipelines.
- Combined with other equipment, this mixer provides a mixing process suitable for each particular purpose.
- A HADO multi-line mixer only 1/2000th the size of a conventional batch-type mixer can process an equal amount of materials. Moreover, the multi-line mixer's mixing efficiency is also three times greater.

※ Models of 7.5 kW or larger power are not included in the multi-mixer series. They are coded according to the former system: L-7 is the top-mount type and L-8 is the side-mount type.

※ The specifications are based on mixing one kind of liquid. For other applications such as dissolving powder, kindly consult us.

※ Mixers with 2-pole motors are also available on request.

SUPER SHEAR MIXERS SDCS-type in-line dispersion mixers

In-line dispersion mixers
SDCS-type

Rotor

Stator

Assembled in ducting for continuous dispersion and discharging

■ Features

Despite the small size, these compact, in-line dispersion mixers deliver high dispersion and pumping required for continuous, large-volume processing.

■ Specifications

● SDCS-type in-line dispersion mixers

Model	Motor		Applicable viscosity (mPa · s)	Processing amount (m ³ /h)
	Output (kW)	Max. Speed (rpm)		
060M-1.5	1.5	~5,000	0.1~1,000	1.9
075M-3.7	3.7	~5,000		3.8
100M-5.5	5.5	~3,600		6.5
125M-15	15	~3,600		8.4
150M-22	22	~3,000		12