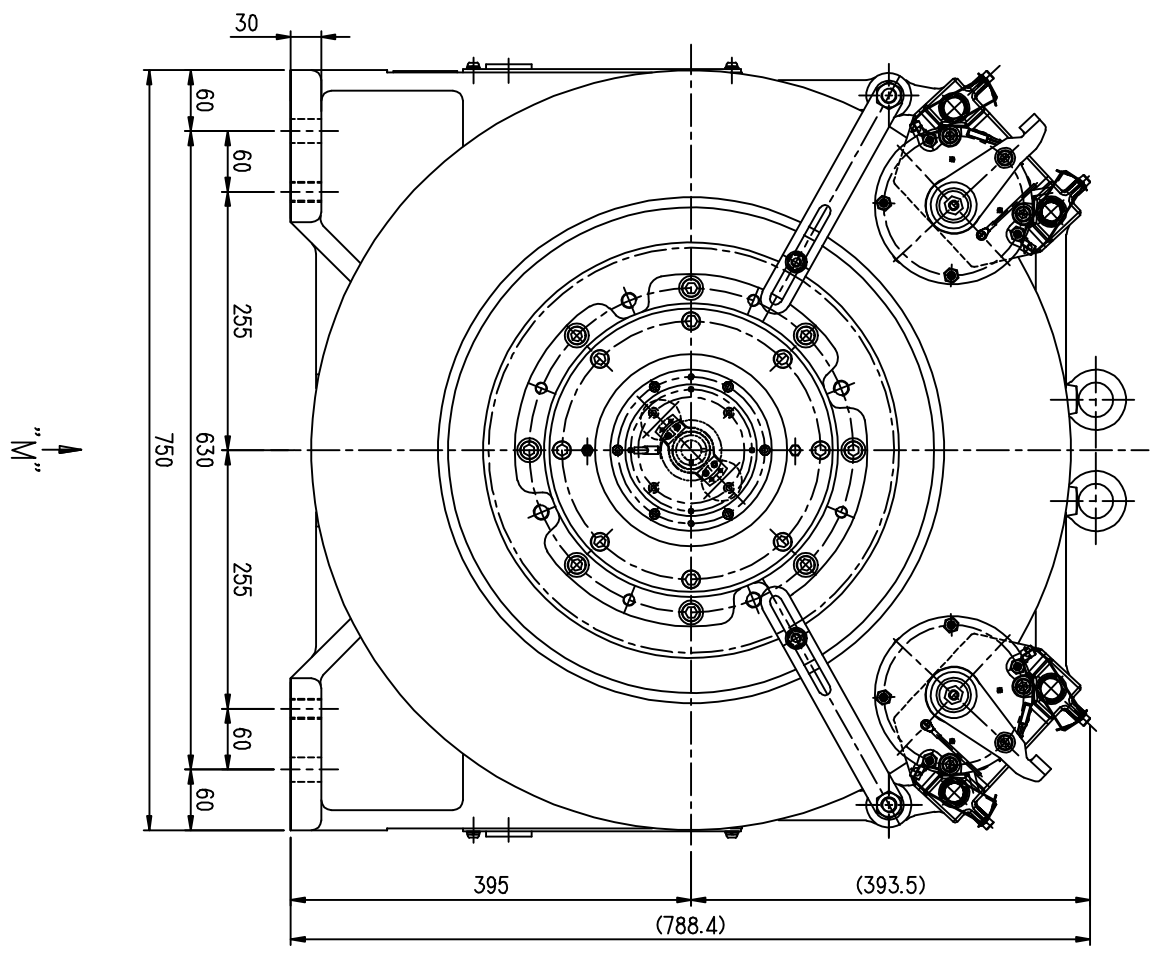
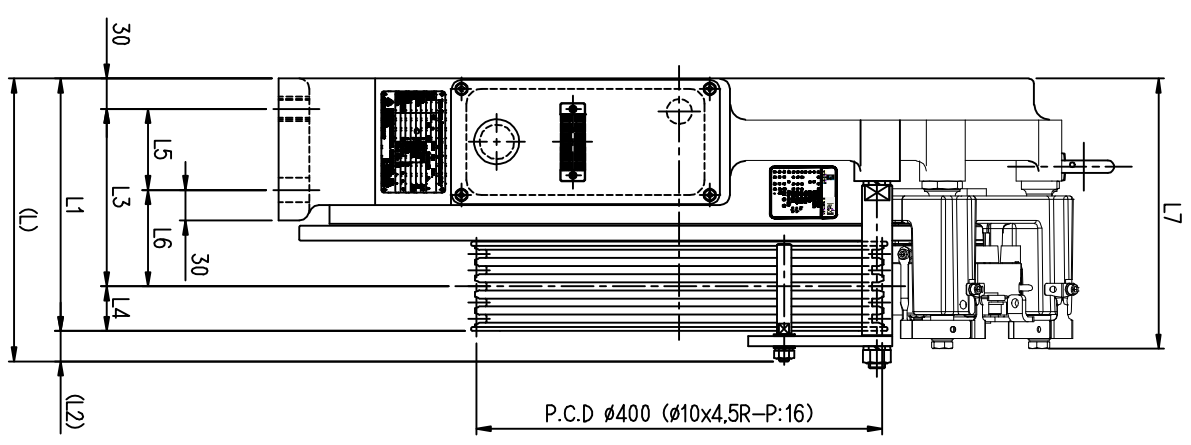
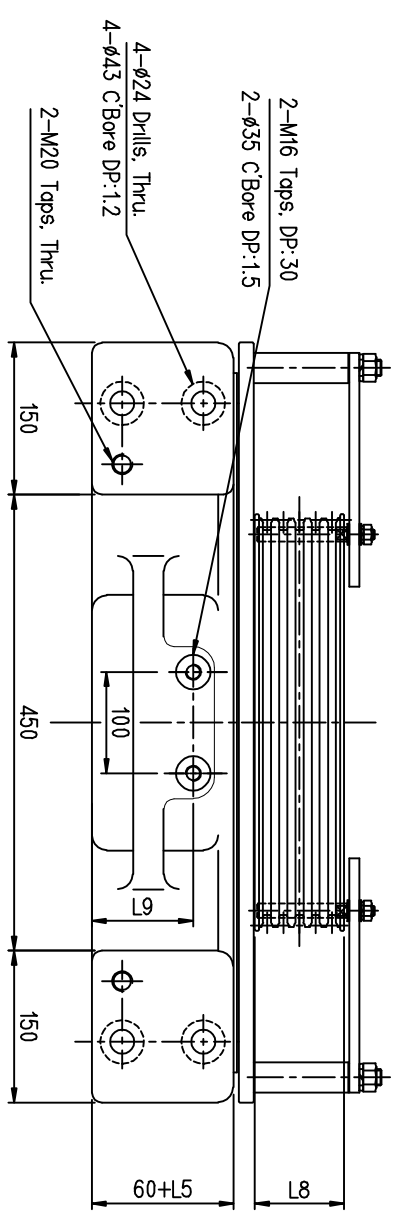


K'	M	H
95°	7.37	6.62
105°	7.93	6.96

U-V Under Cut Groove



GROUP NO.	A	B	C
RATED LOAD	320~600kg	680~1000kg	1150~1200kg
L	264	279	322
L1	234	249	285
L2	30	30	37
L3	160	175	203
L4	44	44	52
L5	80	80	95
L6	80	95	108
L7	251.5	266.5	286.5
L8	88	88	104
L9	100	100	107



VIEW "M"