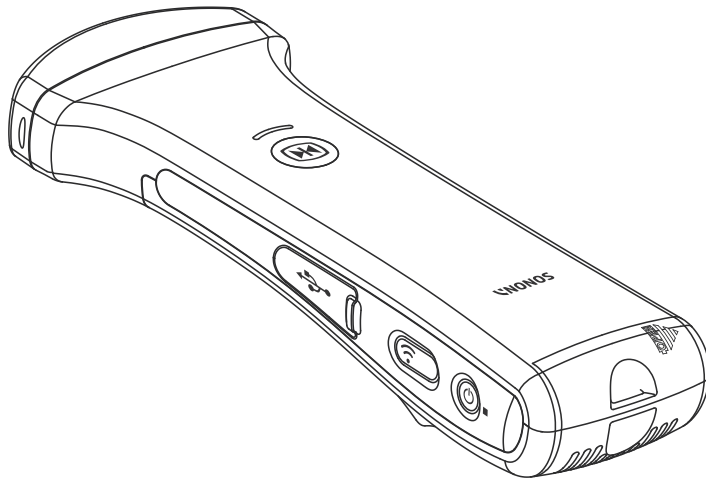


SONON 300C

Portable Ultrasound Device



Quick Start Guide

※ Please familiarize yourself with the user manual before the use of this product.

Package Contents

* Please check the contents of the package.



Insertion of Battery



- 1 Slide the battery lock button down.
- 2 Separate the battery cover out.
- 3 Insert the charged battery.
- 4 Close the battery cover.
- 5 Completed.

Caution

Make sure to slide the lock button down before separating the battery cover.

APP Installation (iOS, Android)

The method of App download is different according to mobile operating system.

iOS iOS 7.0 and later

- 1 Launch the "App Store" app
- 2 Search for "SONON 300C"
- 3 Select and install the "SONON 300C" app
- 4 Enter the user's Apple password
- 5 Automatically installed

Android Android 4.01 and later

- 1 Launch the "Google Play" app
- 2 Search for "SONON 300C"
- 3 Select and install the "SONON 300C" app
- 4 Automatically installed

Minimum Mobile Device Requirements

iPhone 5
iPad 3rd generation or later version
Galaxy S3, Note 2
Galaxy Note 10.1 generation or later version

Recommended devices

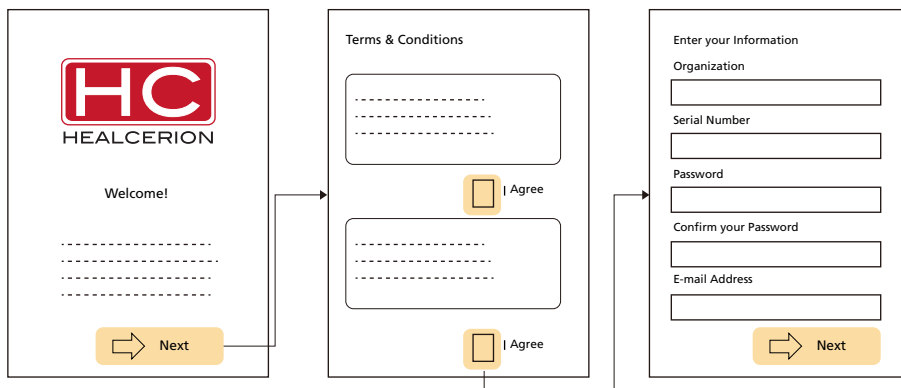
iPhone 5S, iPad mini3, Galaxy tab pro 8.4(SM-T320),
Galaxy S5(SM-G900K)

Device Connection and Registration

- 1 Press the Power button for 1-2 seconds, and the LED is turned on green.
Then the WiFi LED is lit within 30 seconds.
- 2 Select SSID: SONON 300C-Serial No.(XXXXXX) in the WiFi search of the mobile device.
- 3 The password for the network is basically set as "1234567890".
- 4 The change of network SSID and password can be made in the WiFi Setup of Full Setting Mode.

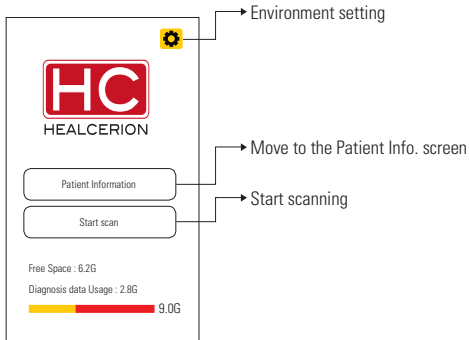
SONON 300C App Registration

When you use it for the first time, register the user as follows and set the password.
After that, you can start the App by using only the password.



Device Operating

Start Screen



Touch Screen Interaction

Action	Interaction
Tap	Taps once
Drag	Drags
Pinch in	Zooms out
Pinch out	Zooms in
Flick	Turns pages

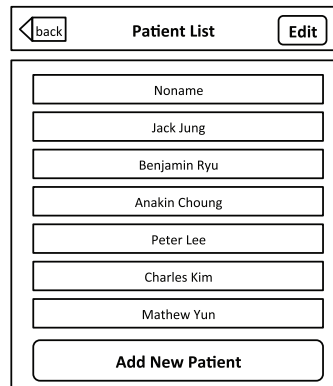
Caution

When "Start Scan", the device should be connected to the SONON 300C AP WiFi network.

Patient Information

Tap the Patient Information button, and the following screen comes up.

- 1 Edit: You can edit patient information.
- 2 Patient's name: You can check the patient's information.
- 3 Add New Patient: You can add patients.



Caution

The user should manage the patient information carefully.

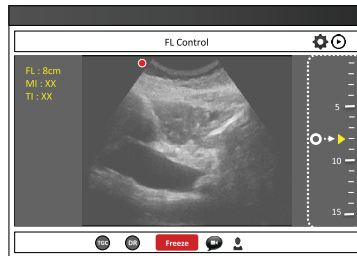
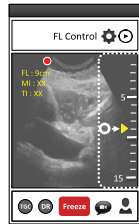
Use of LIVE Screen

Screen Zoom In/Out

Stretch two fingers apart or pinch them together to zoom in/out the screen.

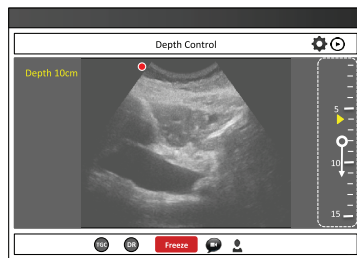
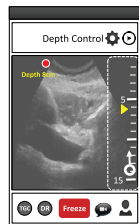
Focus Length (FL) Control

You can adjust the focus length by tapping the wanted length in the scale part on the right of the screen.



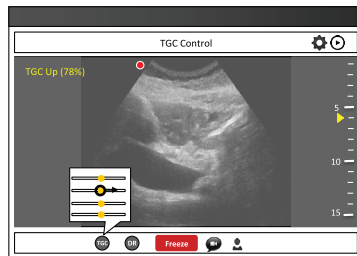
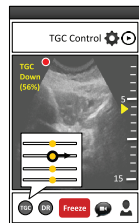
Depth Control

You can adjust the depth by dragging the scale part on the right of the screen.



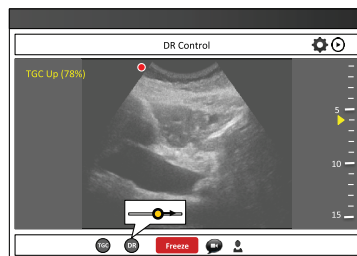
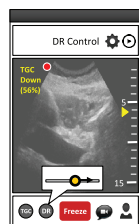
TGC Control

Tap the TGC button and move the slide bar left and right to adjust.



DR Control

Tap the DR button and move the slide bar left and right to adjust.



Recording

Tap the Cine File Saving button to record.

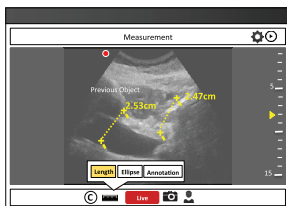
Use of FREEZE Screen

Screen Zoom In/Out

Stretch two fingers apart or pinch them together to zoom in/out the screen.

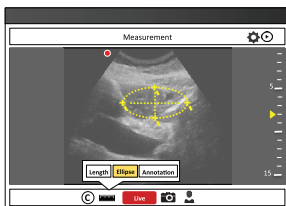
Measurement (Length, Ellipse, Annotation)

Tap the Measurement button to use.



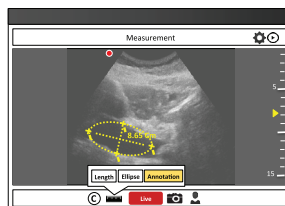
Measurement of Length

Measure the length between two points and move using tap and drag.



Measurement of Circumference of Ellipse

Measure the circumference of the ellipse and move using tap and drag.



Inserting Annotation

Insert annotation and move using tap and drag.

Clear

Tap the Clear button to remove existing measurements.

Saving Still Shot

Tap the Still Shot Saving button to save a still shot.

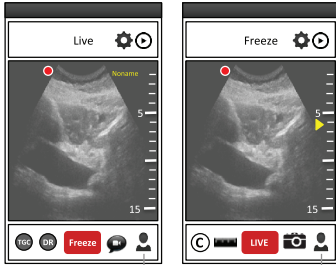
Rewind

- On the FREEZE screen, 150 still shots can be rewound for checking. You can select a good image among them to measure.
- Tap the slide bar on the upper part and drag left and right.

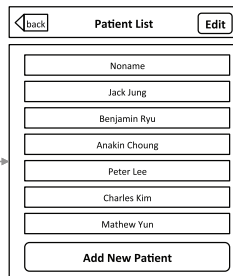


List Checking and Sending

Patient List

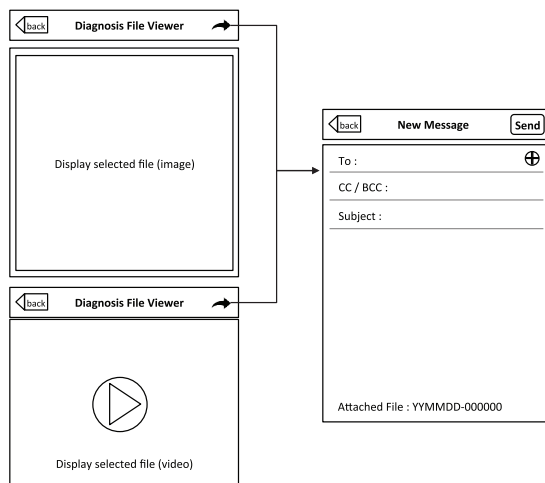


- Tap the Patient Information button to move to the Patient List screen.
- In the Patient List, you can view and send an existing recorded diagnosis cine file or still shot. Also, you can edit the patient information, etc.



Sending

The recorded diagnosis cine file or still shot is transferred to another device through the E-mail app of the mobile device.



Caution

While connected to the SONON 300C, the user cannot send the diagnosis cine file or still shot via E-mail App. Disconnect the SONON 300C in the WiFi setting and use a mobile network or other WiFi.

Safety Issues

Warnings

- Only authorized personnel shall perform any type of repair on the SONON 300C. Never attempt to open the adapter or adapter connector. This will void the warranty.
- Probes are not delivered sterile. Before the first use, it is mandatory to clean and disinfect probes to avoid infections.
- Probes must be cleaned and disinfected before they are disposed.
- Do not modify accessories, peripheral devices, and the components of the system without the authorization of HEALCERION. If this is neglected, the regulation approval for the product can be cancelled, and the responsibility for improper use rests with the user.
- Do not use the probe with high-frequency surgical equipment. Doing so may damage the equipment.
- If you lose the mobile device, the stored data cannot be recovered. Please take care not to lose it.
- When the product is used for 10 minutes, a resting time of 10 minutes is needed.

Notes

- Ultrasound probes are highly sensitive medical instruments. Use carefully when handling them.
- Do not use a damaged or defective probe. Failure to follow this precaution can result in equipment damage.
- Transducer damage can result from contact with inappropriate coupling gel or cleaning agents.
- Do not soak the transducer in or expose it to solutions containing alcohol, bleach, ammonium chloride compounds or hydrogen peroxide, or any incompatible solutions.
- Inspect the probe prior to use or before cleaning for damage or degeneration to the housing, lens or seal.
- If a probe has been dropped on the floor or on any other hard surface, do not use the probe any more. That may increase the risk of electric shock due to damaged electrical insulation.

Cautions

- Do not touch the patient and the charging connector simultaneously.
- This should be used in compliance with applicable laws. Some jurisdictions restrict certain uses, such as fetal sex identification.
- Changing the display settings can affect image quality and compromise diagnostic quality. The user is responsible for using appropriate display settings to achieve appropriate image quality.
- Ultrasound procedures should be performed prudently using the principle of ALARA (As Low As Reasonably Achievable). See Section 3.6 of the user manual for additional information.
- Features that facilitate measurements must be used with extreme care. Some settings are suggestions of the system. If in doubt, verify the measurement results with manual measurement methods. The user is responsible for the diagnostic interpretations of the measurements.

Information on Manufacturer

The SONON 300C has been developed and manufactured by HEALCERION. For more information or support for the product, please contact HEALCERION or your local distributor.

HEALCERION Address : 804, 38-21, Digital-ro, 31-gil, Guro-gu, Seoul, 08376, Korea
Telephone : +82-70-7582-6326
www.healcerion.com

