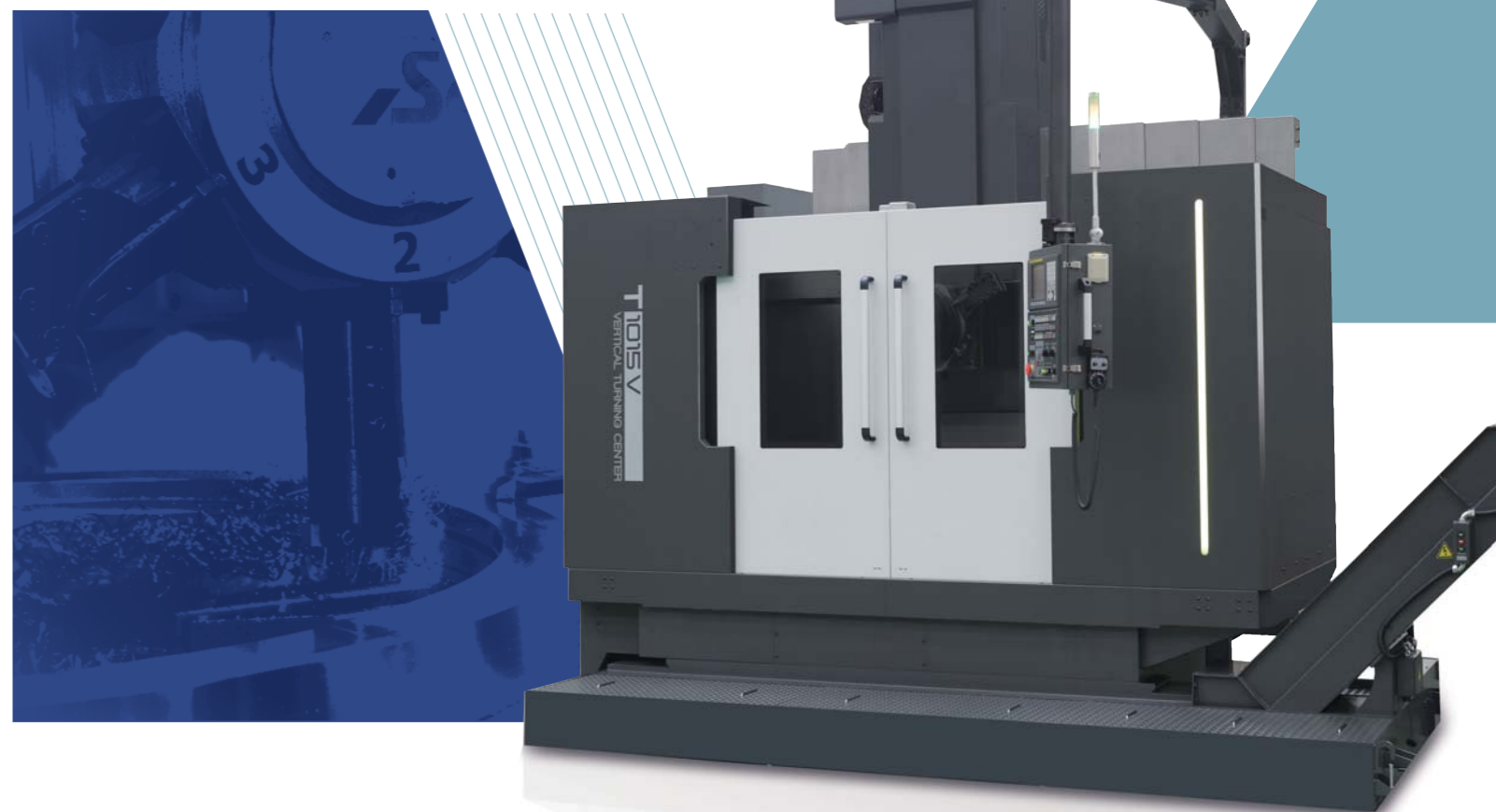
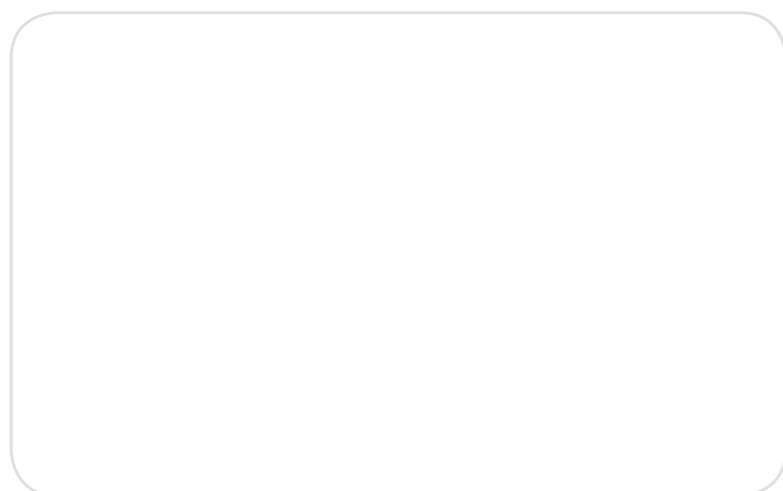




# VERTICAL TURNING CENTER SERIES

**S&T Dynamics**  
http://www.hisntd.com



- 본 사 642-020, 경남 창원시 성산구 남면로 599  
TEL : (055)280-5000(대) / FAX : (055)283-2579
- 서울 사무소 153-803, 서울특별시 금천구 가산디지털1로 134  
TEL : (02)3279-5266(대) / FAX : (02)716-8724
- 기계 영업팀 서울 TEL : (02)3279-5266 / FAX : (02)716-8724  
창원 TEL : (055)280-5290~3 / FAX : (055)280-5299
- 기계 C/S팀 서울 TEL : (02)3279-5280 / FAX : (02)716-8724  
창원 TEL : (055)212-6310~4 / FAX : (055)282-5717

- HEAD OFFICE 599 NAMMYEON-RO, SUNGSAN-GU, CHANGWON  
GYEONGNAM, 642-020 KOREA  
TEL : +82-55-280-5000 / FAX : +82-55-283-2579
- SEOUL OFFICE 134 GASAN DIGITAL 1RO, GEUMCHEON-GU, SEOUL 153-803 KOREA  
TEL : +82-2-3279-5266 / FAX : +82-2-716-8724
- OVERSEAS BUSINESS DIVISION  
599 NAMMYEON-RO, SUNGSAN-GU, CHANGWON, GYEONGNAM 642-020 KOREA  
TEL : +82-55-280-5902 / FAX : +82-55-280-5904  
E-MAIL : machine@hisntd.com

**S&T** 중공업  
S&T Dynamics Co.,Ltd

# T900V

VERTICAL TURNING CENTER

성공사업의 파트너! S&T 공작기계!  
VERTICAL TURNING CENTER의 진정한 강자탄생

Partner for Successful Business  
VERTICAL TURNING CENTER / NEW LEADER



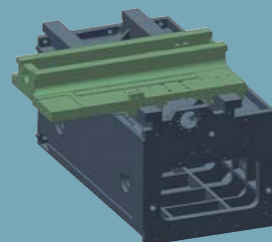
## | 기계적 특징 | DISTINCTIVE FEATURES

- 최대 선삭 높이 : 650mm
- 최대 선삭 외경 : Ø800mm
- 강력한 Servo-Turret 적용으로 생산성 및 품질 향상
- 이중 Door system 적용으로 절삭유 누유 방지
- 강력절삭시 안정된 정도를 유지하기위해 고강성 베드와 테이블로 구성
- Max turning height : 650mm
- Max turning dia : Ø800mm
- Powerful servo turret application
- Double door system (Prevent coolant leakage)
- Composed of high-strength bed and table, in order to keep stable precision on strong cutting

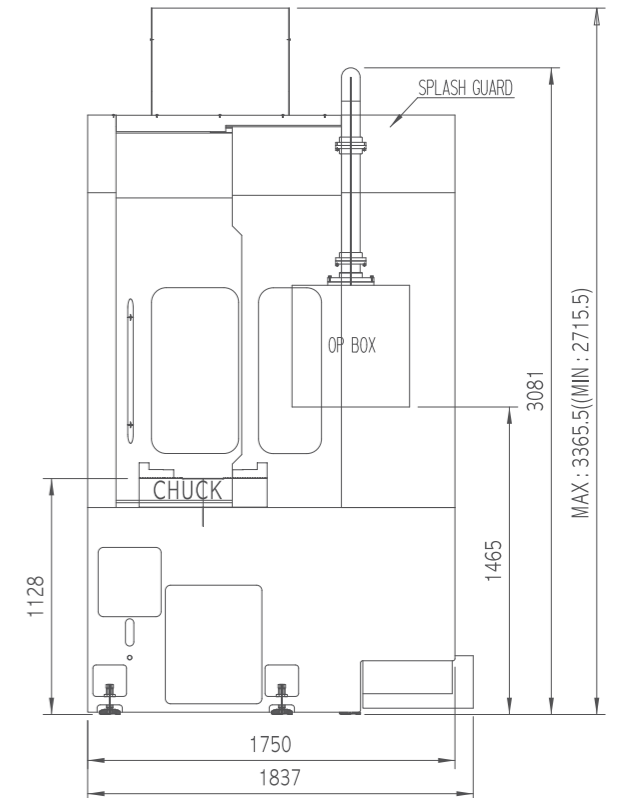
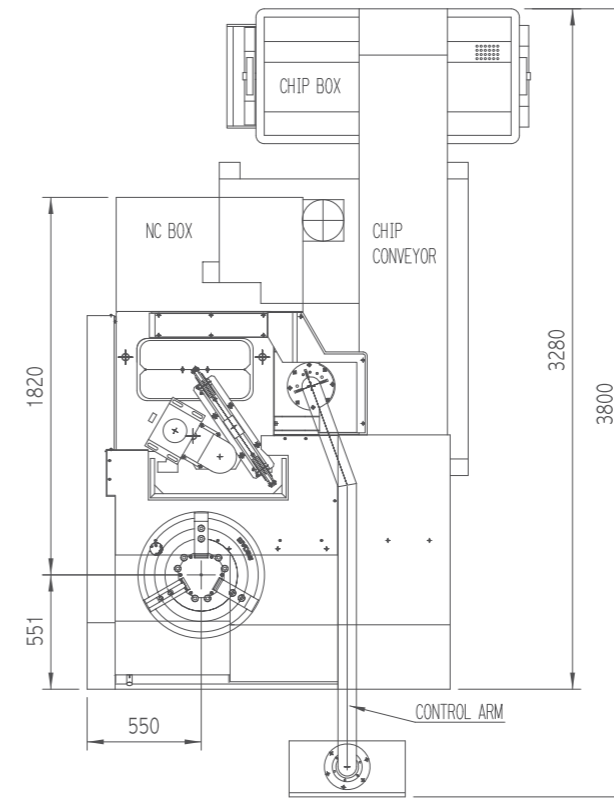
## | 슬라이드 웨이 | SLIDE WAY

Column, Saddle 와의 일체형 안내면은 내구성이 뛰어나고 강력절삭을 가능하게 하여 생산성을 높여줍니다. 또한 자동 정량, 정압 윤활장치를 적용하여 최적의 조건을 유지시켜 줍니다.

As guide surface incorporated with column and saddle has excellent durability and enables high-strength cutting, it improves productivity. It is also equipped with automatic fixed quantity and fixed pressure lubrication equipment to keep the optimal conditions.



## T900V 기계외형도 (MACHINE DIMENSION)



(unit:mm)

## 표준부속품 (STANDARD ACCESSORIES)

- 유압척 Ø610 / Hydraulic chuck Ø610
- 하드 죠, 소프트 죠 / Hard jaw, soft jaw
- 절삭유 공급장치 / Coolant equipment
- 유압 장치 / Hydraulic device
- 작업등 / Work light
- 설치용 부품 / Leveling bolt & block
- 풀 카바 / Full splash guard
- 풋 스위치 / Foot switch
- 공구 박스 / Tool kit & box
- 공구 홀더 / Tool holder
- 경고등 / Patrol lamp
- 6각터렛 / Hexagon Turret
- 윤활유 공급장치 / Lub. Equipment

(unit:mm)

## 특별부속품 (OPTIONAL ACCESSORIES)

- 단동척 Ø600 / Manual chuck Ø600
- 하드 죠, 소프트 죠(예비품) / Hard jaw, soft jaw
- 칩컨베이어 & 박스 / Chip conveyor & box
- 면판 / Face plate
- 변압기 / Transformer (50KVA)
- 집진기 / Oil mist collector
- Dual chucking pressure
- Auto door
- Oil skimmer

# T850VD

VERTICAL TURNING CENTER

성공사업의 파트너! S&T 공작기계!  
2-SPINDLE VERTICAL TURNING CENTER의 진정한 강자!

Partner for Successful Business  
2-SPINDLE VERTICAL TURNING CENTER / NEW LEADER



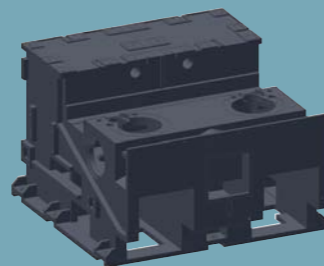
## | 기계적 특징 | DISTINCTIVE FEATURES

- 최대 선삭 높이 : 650mm
- 최대 선삭 외경 : Ø800mm
- 강력한 Servo-Turret 적용으로 생산성 및 품질 향상
- 이중 Door system 적용으로 절삭유 누유 방지
- 강력절삭시 안정된 정도를 유지하기위해 고강성 베드와 테이블로 구성
- Max turning height : 650mm
- Max turning dia : Ø800mm
- Powerful servo turret application
- Double door system (Prevent coolant leakage)
- Composed of high-strength bed and table, in order to keep stable precision on strong cutting

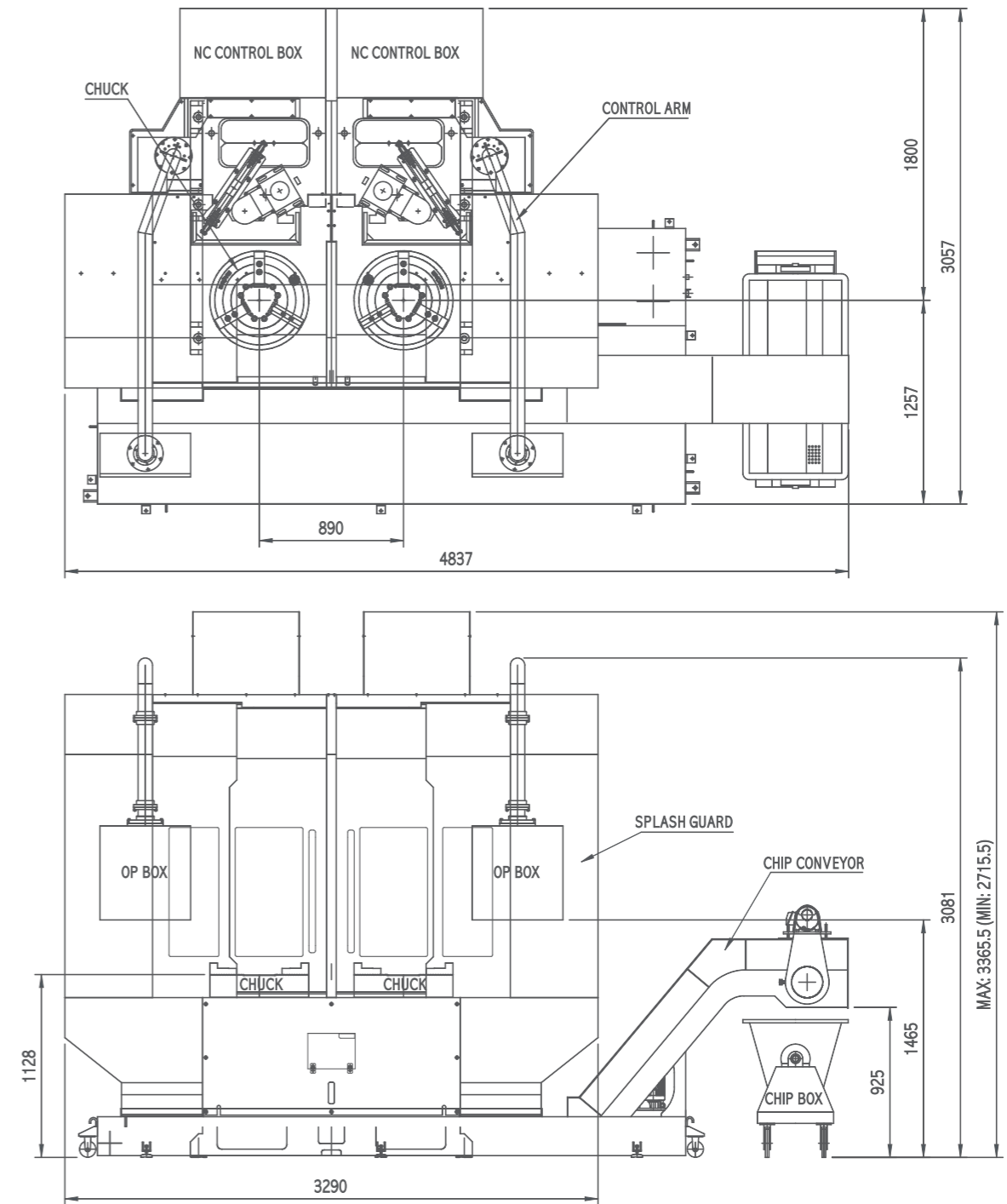
## | 슬라이드 웨이 | SLIDE WAY

고급 미하나이트(Meehanite) 주물 베드로 중절삭으로 인한 비틀림이나 고하중으로 인한 처짐 등에 충분한 강성을 가지며, 장시간 사용에도 뛰어난 정밀도를 유지하도록 설계되었습니다.

As it is constructed with high quality Meehanite casting bed, it has enough strength against sagging due to twisting caused by heavy cutting or heavy load, and it is designed to keep excellent precision against long time using.



## T850VD 기계외형도 (MACHINE DIMENSION)



(unit:mm)

(unit:mm)

### 표준부속품 (STANDARD ACCESSORIES)

- 유압척 Ø610 / Hydraulic chuck Ø610
- 하드 죠, 소프트 죠 / Hard jaw, soft jaw
- 절삭유 공급장치 / Coolant equipment
- 유압 장치 / Hydraulic device
- 작업등 / Work light
- 설치용 부품 / Leveling bolt & block
- 풀 카바 / Full splash guard
- 풋 스위치 / Foot switch
- 공구 박스 / Tool kit & box
- 공구 홀더 / Tool holder
- 경고등 / Patrol lamp
- 6각터렛 / Turret Hexagon
- 윤활유 공급장치 / Lub.Equipment

### 특별부속품 (OPTIONAL ACCESSORIES)

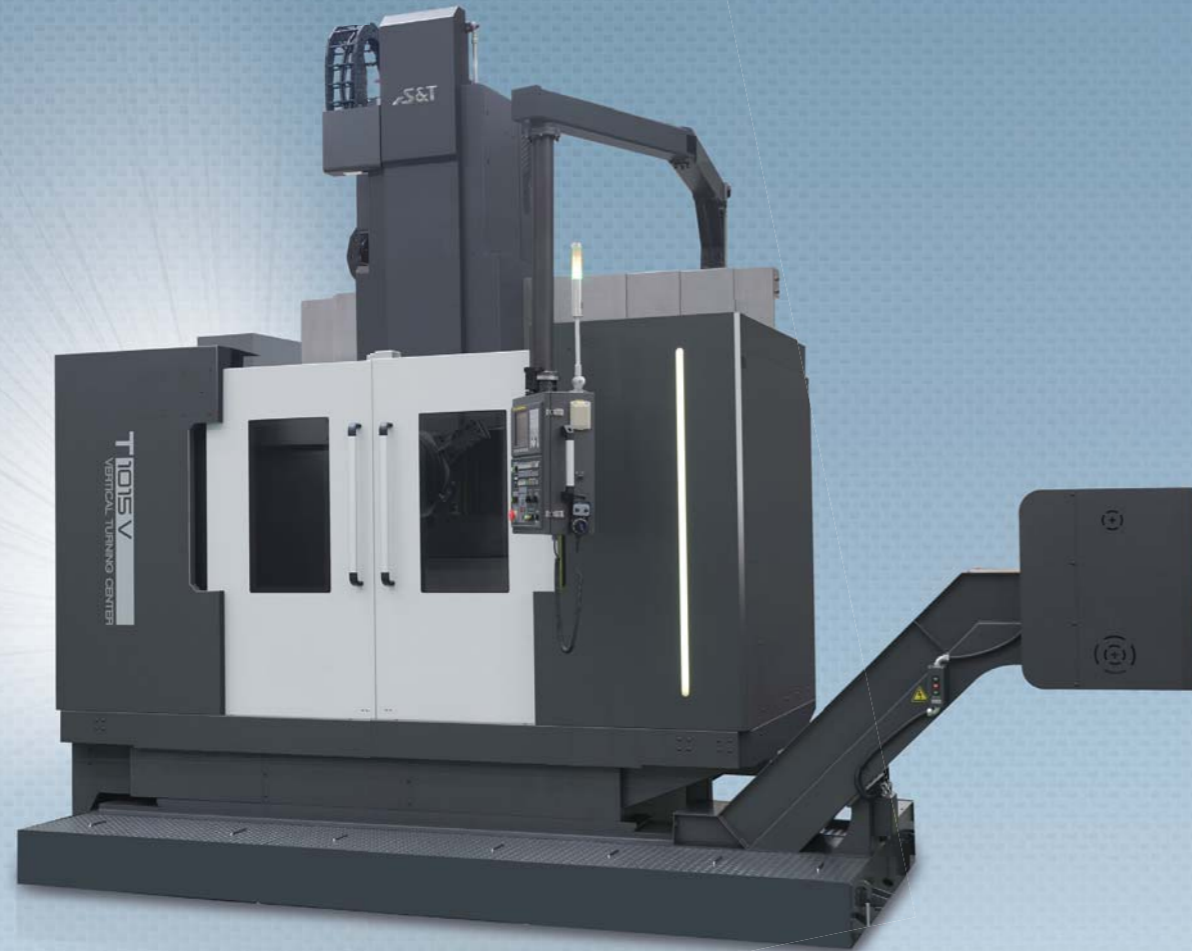
- 단동척 Ø600 / Manual chuck Ø600
- 하드 죠, 소프트 죠(예비품) / Hard jaw, soft jaw
- 칩컨베이어&박스 / Chip conveyor&box
- 면판 / Face plate
- 변압기 / Transformer (50KVA×2)
- 집진기 / Oil mist collector
- Dual chucking pressure
- Auto door
- Oil skimmer

# T1015V(C)

VERTICAL TURNING CENTER

**성공사업의 파트너! S&T 공작기계!**  
**대형 공작물에 적합한 고강력, 고정밀 가공 수직선반**

Partner for Successful Business VERTICAL TURNING CENTER for high strength, high precision machining suitable for large sized workpiece



## | 기계적 특징 | DISTINCTIVE FEATURES

- 가공특성에 따라 Turret을 4각/5각/6각으로 선택
- 경화 열처리된 Guide 와 Turret이 부착된 안내면은 장기간 사용에도 정밀도 유지
- 척 사이즈 1250mm 까지 장착
- 주축이 2-step Gear box + GEAR 조합으로 되어 강력절삭에 탁월
- 주축모터 : AC30/37kW(AC37/45kW)
- Selects turrets with 4 corners /5 corners /6 corners according to processing features.
- As guide is processed with thermal treatment for hardness and guide surface is equipped with turret, it maintains precision against long time using.
- Available for mounting chuck up to 1250mm
- As the main shaft is structured in combination with 2-step Gear box and GEAR, it has excellent for strong cutting.
- Spindle motor : AC30/37kW(AC37/45kW)

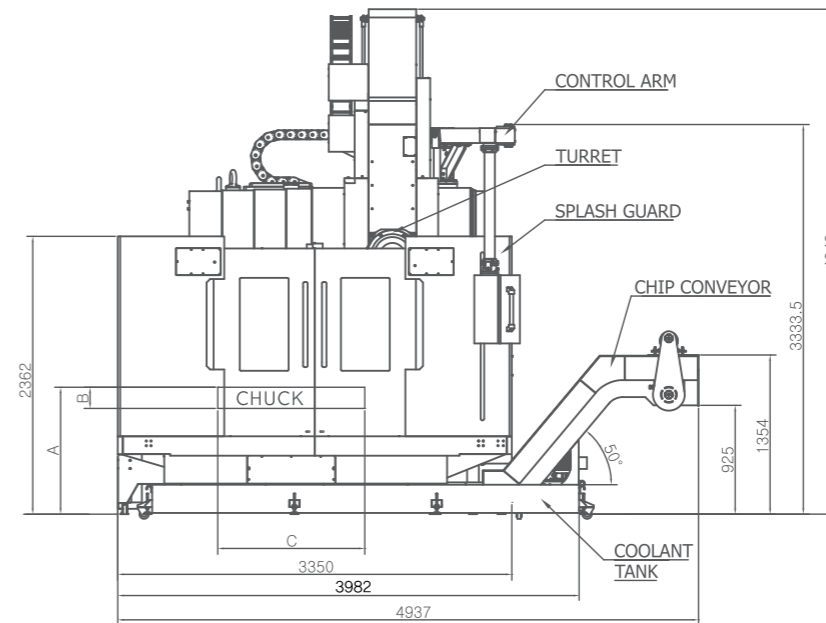
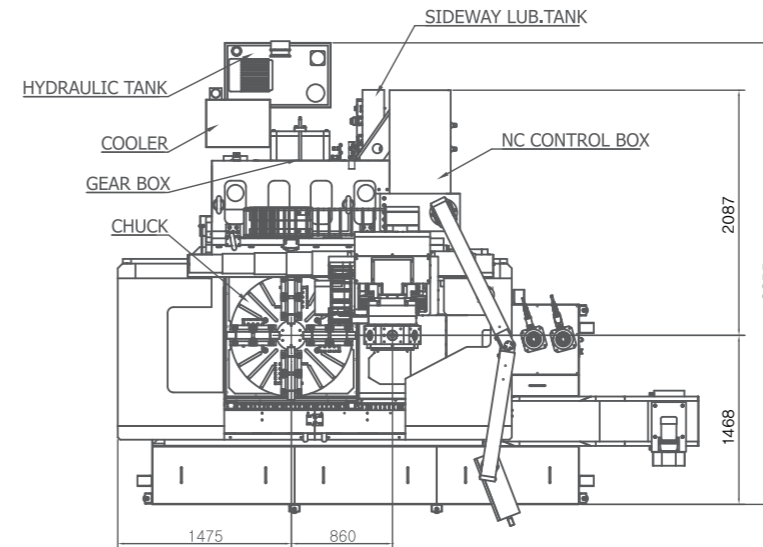
## | 강력한 주축구조 | STRONG MAIN SHAFT STRUCTURE

우수한 진동 흡수 능력을 가진 고급 미하나이트(Meehanite) 주물 베드에 대형 베어링 적용으로 강력 절삭시 안정된 정도를 유지하며, ZF BOX 및 대형기어와의 조합으로 BELT슬립 현상이 없음.

Since it is equipped with high quality Meehanite casting bed having excellent vibration absorption capability and large sized bearing, it maintains stable precision against strong cutting with no slip as it is combined with ZF BOX and large size gear.



## T1015V(C)기계외형도 (MACHINE DIMENSION)



(unit:mm)

## 표준부속품 (STANDARD ACCESSORIES)

- 2-Step 독립식 수동척 Ø1040 / 2-Step Independent Manual Chuck Ø1040
- 공구 홀더 / Tool holder
- 공구 박스 / Tool kit & Box
- 유압 장치 / Hydraulic device
- 절삭유 공급장치 / Coolant equipment
- 윤활유 공급장치 / Lub.equipment (안내면,주축베어링,기어박스/Sideway,Spindle bearing,Gear box)
- 커버 / Splash guard
- 6각터렛 / Turret Hexagon
- 작업등 / Work light
- 설치용 부품 / Leveling bolt & Block
- 경고등 / Patrol lamp
- 오일냉각기 / Cooler<sup>(1)</sup>
- Axial Driven Holder<sup>(1)</sup>

(1) T1015VC 적용시 제공

(unit:mm)

## 특별부속품 (OPTIONAL ACCESSORIES)

- 2-Step 독립식 수동척 Ø1250 / 2-Step Independent Manual Chuck Ø1250
- 유압척Ø1000,Ø1250 / Hydraulic chuck Ø1000,Ø1250
- 2-Step 독립식 수동 4-JAW / 2-Step Independent Manual 4-JAW
- 칩컨베이어 & 박스 / Chip conveyor & Box
- 변압기 / Transformer (70KVA)
- 면판 / Face plate
- 각종 바이트 홀더 / Various bite holders
- 사다리 / Ladder
- Automatic Tool Presetter
- Automatic door
- Radial Driven Holder

(unit:mm)

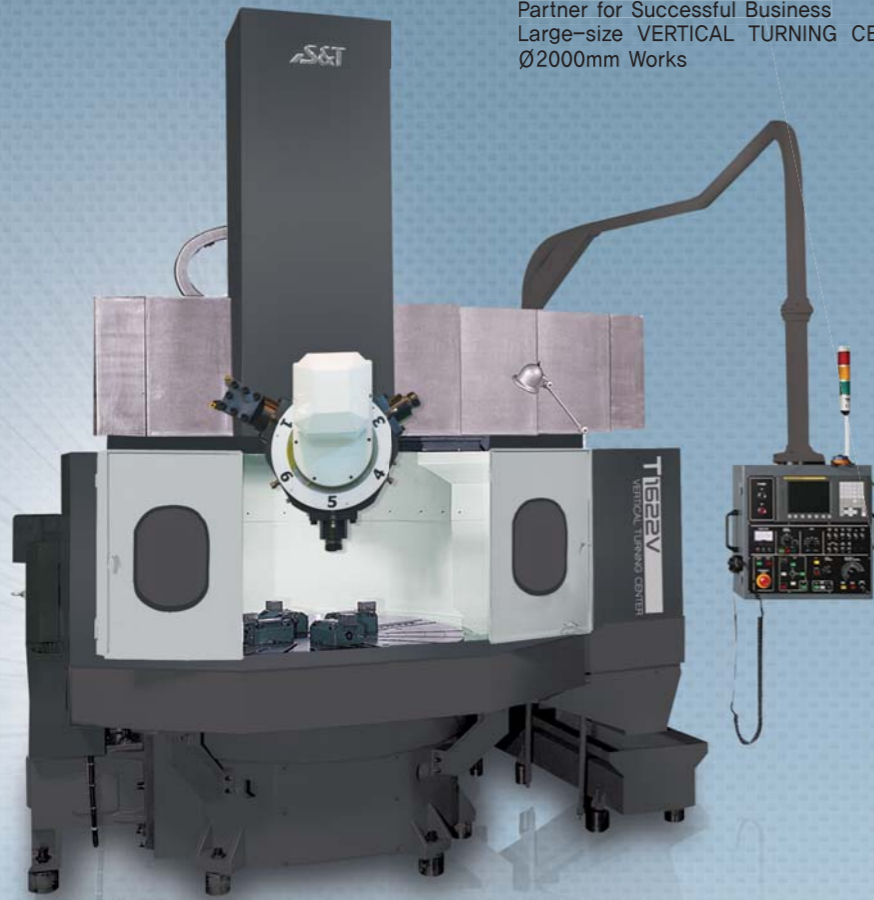
기종 / MODEL	A	B	C	비고 / NOTE
T1015V(C)	1022	180	Ø1040	2-STEP MANUAL CHUCK : Ø1040, STANDARD
	1022	180	Ø1250	2-STEP MANUAL CHUCK : Ø1250, OPTION
	1079	180	Ø1000	HYDRAULIC CHUCK : Ø1000, OPTION
	1079	180	Ø1250	HYDRAULIC CHUCK : Ø1250, OPTION

# T1622V(C)

VERTICAL TURNING CENTER

성공사업의 파트너! S&T 공작기계!  
Ø2000mm가공이 가능한 대형 수직선반

Partner for Successful Business  
Large-size VERTICAL TURNING CENTER Capable of Processing  
Ø2000mm Works



## | 기계적 특징 | DISTINCTIVE FEATURES

- 가공특성에 따라 Turret을 4각/5각/6각으로 선택
- 테이블에는 중절삭을 고려한 베어링 시스템 적용
- 중절삭에서도 안정된 정밀도를 고려한 일체형 칼럼 구조
- 변속기어 Box와 주축 Table를 분리하므로 열변형 영향을 극소화
- 경화 열처리된 Guide와 Turret이 부착된 안내면은 장기간사용에도 정밀도유지

- Selects turrets with 4 corners /5 corners /6 corners according to processing features.
- Applying the bearing system on the table for heavy cutting
- Single unit column structure considering stable precision for heavy cutting.
- The heat distortion impact is minimized because the speed change box is separated from the spindle table.
- As guide is processed with thermal treatment for hardness and guide surface is equipped with turret, it maintains precision against long time using.

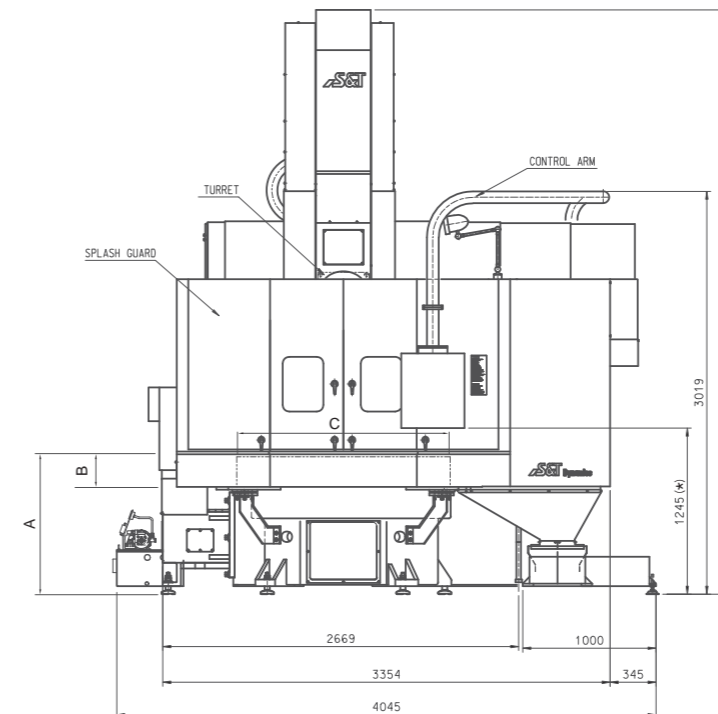
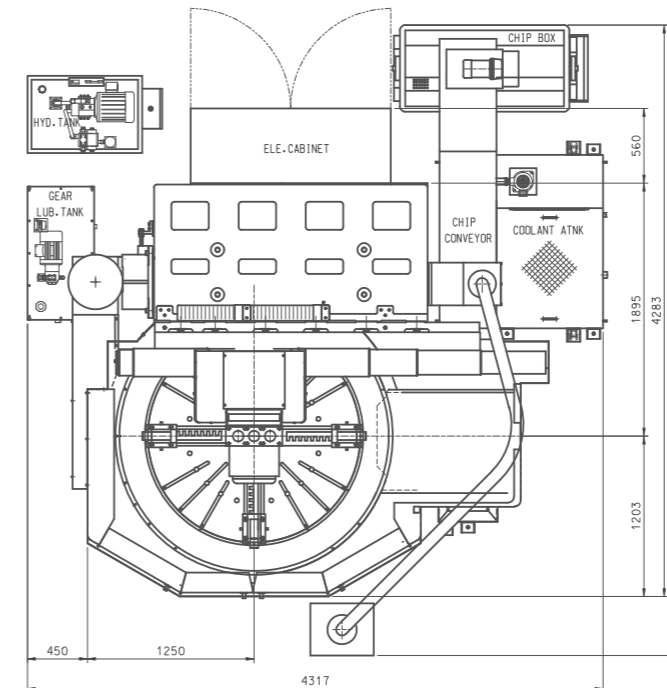
## | 척의 다양성 | DIVERSE RANGE OF CHUCK

(unit:mm)

기종 / MODEL	척사이즈 / Chuck Size	형식 / FORM	비고 / NOTE
T1015V(C)	Ø1040	2-Step 독립식 수동척 / 2-Step Independent Manual Chuck	표준/Standard
	Ø1250	2-Step 독립식 수동척 / 2-Step Independent Manual Chuck	옵션/Option
	Ø1000	유압척 / Hydraulic Chuck	옵션/Option
	Ø1250	유압척 / Hydraulic Chuck	옵션/Option
T1622V(C)	Ø1250	2-Step 독립식 수동 4-Jaw+유압척 / 2-Step Independent Manual 4-Jaw+Hydraulic Chuck	옵션/Option
	Ø1600	2-Step 독립식 수동척 / 2-Step Independent Manual Chuck	표준/Standard
	Ø1600	2-Step 독립식 수동 4-Jaw+유압척 / 2-Step Independent Manual 4-Jaw+Hydraulic Chuck	옵션/Option
	Ø1800	2-Step 독립식 수동척 / 2-Step Independent Manual Chuck	옵션/Option



## T1622V(C)기계외형도 (MACHINE DIMENSION)



(\* 표시 치수 변경 가능)

(unit:mm)

기종 / MODEL	A	B	C	비고 / NOTE
T1622V(C)	1020	225	Ø1600	2-STEP MANUAL CHUCK : Ø1600, STANDARD
	1020	225	Ø1800	2-STEP MANUAL CHUCK : Ø1800, OPTION
	1125	220	Ø1600	HYDRAULIC CHUCK : Ø1600, OPTION

(unit:mm)

## 표준부속품 (STANDARD ACCESSORIES)

- 2-Step 독립식 수동척 Ø1600 / 2-Step Independent Manual Chuck Ø1600
- 공구 홀더 / Tool holder
- 공구 박스 / Tool kit & Box
- 유압 장치 / Hydraulic device
- 절삭유 공급장치 / Coolant equipment
- 윤활유 공급장치 / Lub.equipment (안내면, 주축베어링, 기어박스 / Slideway, Spindle bearing, Gear box)
- 커버 / Splash guard
- 4각터렛 / Turret Square
- 작업등 / Work light
- 설치용 부품 / Leveling bolt & Block
- 경고등 / Patrol lamp
- Axial Driven Holder<sup>(1)</sup>
- 오일 냉각기 / Cooler<sup>(1)</sup>

(1) T1622VC 적용시 제공

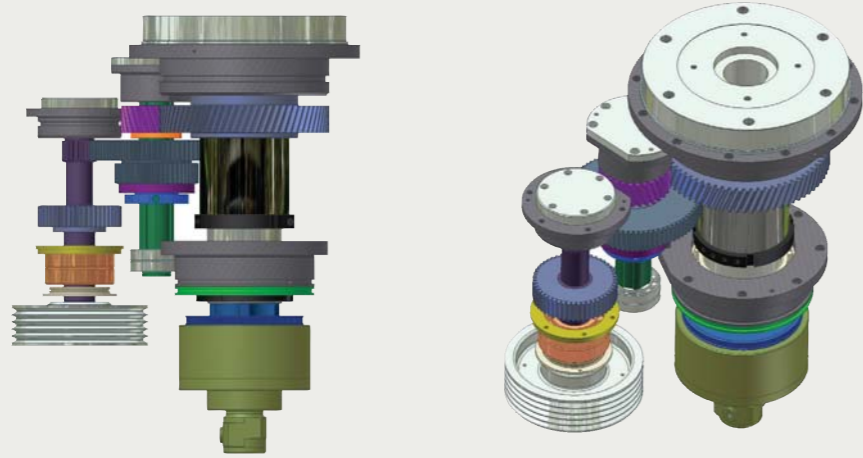
(unit:mm)

## 특별부속품 (OPTIONAL ACCESSORIES)

- 2-Step 독립식 수동척 Ø1800 / 2-Step Independent Manual Chuck, Ø1800
- 유압척 Ø1600 / Hydraulic chuck Ø1600
- 칩컨베이어 & 박스 / Chip conveyor & Box
- 변압기 / Transformer (70KVA)
- 면판 / Face plate
- 각종 바이트 홀더 / Various bite holders
- Radial Driven Holder

**강력한 주축구조 (STRONG MAIN SHAFT STRUCTURE)**

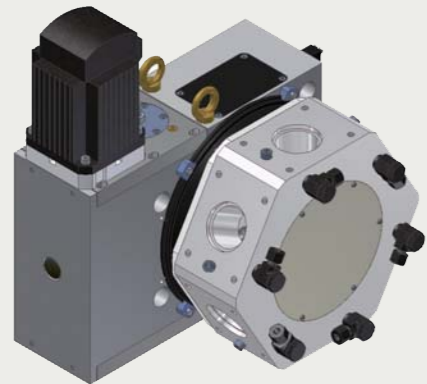
» 우수한 진동 흡수 능력을 가진 고급 미하나이트(Meehanite) 주물 베드에 기어로 구성된 주축은 강력 절삭에 적합하고 슬립현상이 없음.  
As the main shaft is structured with gear on Meehanite casting bed having excellent vibration absorption capability, it is suitable for strong cutting without slip phenomenon.



**서보터렛 (SERVO TURRET)**

» 더욱 강력해진 서보터렛은 생산성 및 품질 향상을 높여줌  
(Increasing productivity and quality with more powerful servo turret)

» 편리한 칩처리(Convenient chip treatment)  
• Bed shower장치를 표준으로 채택하여 원활한 칩처리가 가능  
• Provides effective chip treatment by selecting the bed shower apparatus as standard



» 집진장치(Oil Mist Collector)

» 설치공간의 최적화(Optimized installation space)  
• 유압 유니트를 본체에 부착함으로써 설치공간의 최적화가 가능  
• Optimizes installation space by attaching hydraulic unit to the main body



T850VD

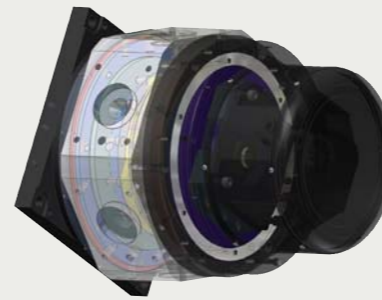


T900V

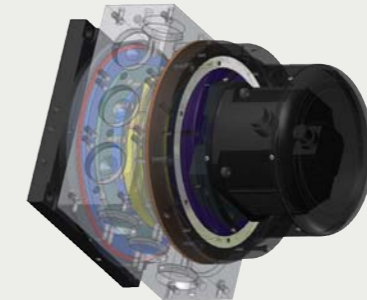
**TURRET DISC의 다양성 (DIVERSE RANGE OF TURRET DISK)**

터렛 디스크 형식 / Type of Turret Disk	기종 / Model	
	T1015V(C)	T1622V(C)
TURRET DISC 4각 / TURRET DISC Square	옵션/Option	표준/Standard
TURRET DISC 5각 / TURRET DISC Pentagon	옵션/Option	옵션/Option
TURRET DISC 6각 / TURRET DISC Hexagon	표준/Standard	옵션/Option
TURNMILL TURRET DISC 6각 / TURNMILL TURRET DISC Hexagon	옵션/Option	옵션/Option

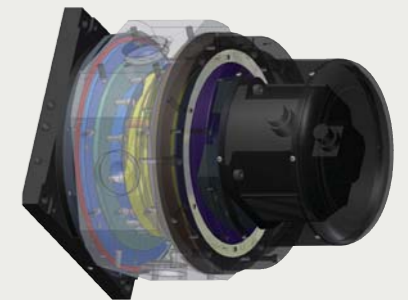
• TURNMILL TURRET은 T1015VC & T1622VC(FANUC) 6각만 적용 / TURNMILL TURRET is applied with only hexagonal T1015VC & T1622VC(FANUC)



• TURRET DISC 6각 / TURRET DISC Hexagon

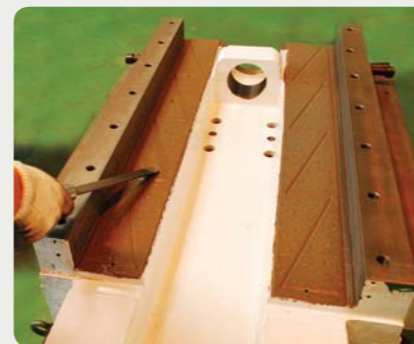


• TURRET DISC 5각 / TURRET DISC Pentagon



• TURRET DISC 4각 / TURRET DISC Square

» 안내면 스크래핑(Guide surface scraping)



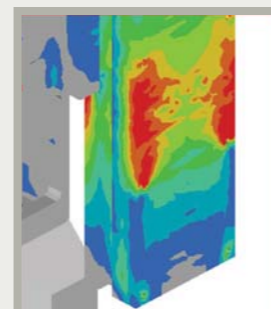
» Automatic Tool Presetter(Option)  
(T1015V(C)에 한함)



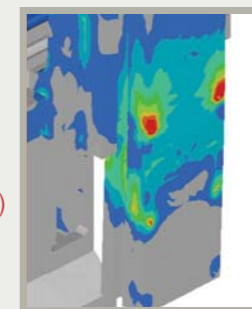
» 유압장치(Hydraulic device)



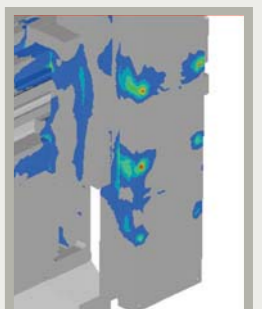
» Tool Bar는 절삭 가공시 절삭력의 영향을 직접 받는 부분으로 구조해석을 통하여 응력집중을 분산화시켜 떨림현상을 최소화 시켰음.  
Tool Bar is a critical area that directly receives the effect of cutting power in the process of cutting, thus, vibration is minimized by dispersing the converged stress.



응력집중  
(Stress convergence)



응력분산  
(Stress divergence)



**공구홀더 (TURNING TOOL HOLDERS)**

**HOLDER PLATE**

TYPE	L	S
PL-4	30	40

**BITE HOLDER**

TYPE	L	S
BH-21	210	32
BH-19	195	25

**TURNING HOLDER**

TYPE	L	S
TS-32R	170	32
TS-32L	170	32
TS-25R	170	25
TS-25L	170	25

**MORSE TAPER SLEEVE**

TYPE	L	d	M
MTH-2	140	Ø63	MT NO.2
MTH-3	140	Ø63	MT NO.3
MTH-4	140	Ø63	MT NO.4

**HOLDER BASE**

TYPE	L	D	d
SL-D63M	140	Ø110	Ø63
SL-D60M	140	Ø110	Ø60

**HOLDER BASE**

TYPE	L	D	d
SL-63M	100	Ø110	Ø63
SL-60M	80	Ø110	Ø60

**BITE HOLDER**

TYPE	L	d	S
CBH-7	70	Ø63	32

**SLEEVE**

TYPE	L	D	d
H63-D50M	150	Ø63	Ø50
H63-D40M	150	Ø63	Ø40
H63-D32M	150	Ø63	Ø32

**SLEEVE**

TYPE	L	D	d
H63-50M	110	Ø63	Ø50
H63-40M	110	Ø63	Ø40
H63-32M	110	Ø63	Ø32

**표준툴홀더 (STANDARD TOOL HOLDER)**

품명 / Part name	규격 / Specifications	T850VD	T900V
		수량 / EA	수량 / EA
BITE HOLDER	BH-21	4	2
BITE HOLDER	CBH-7	2	1
HOLDER PLATE	PL-4	2	1
HOLDER BASE	SL-D63M	2	1
HOLDER BASE	SL-63M	4	2
SLEEVE	H63-D50M	2	1
SLEEVE	H63-50M	2	1
SLEEVE	H63-40M	2	1

**공구홀더 (TURNING TOOL HOLDERS)**

**FLANGE HOLDER**

TYPE	L	d
CFH-12	120	Ø63
CFH-17	170	Ø63
CFH-22	220	Ø63

**BITE HOLDER**

TYPE	L	S
BH-22	225	32
BH-27	275	32

**FLANGE HOLDER**

TYPE	L	d
CFH-14	145	Ø80
CFH-24	245	Ø80

**MORSE TAPER HOLDER**

TYPE	L	M
MTH-4	185	MT NO.4
MTH-5	220	MT NO.5

**BORING BAR**

TYPE	L	S
BB-37	375	25
BB-42	420	25

**BITE HOLDER**

TYPE	L	S
CBH-18	180	32

**BORING HOLDER**

TYPE	L	S
CBB-10	105	25
CBB-20	205	25

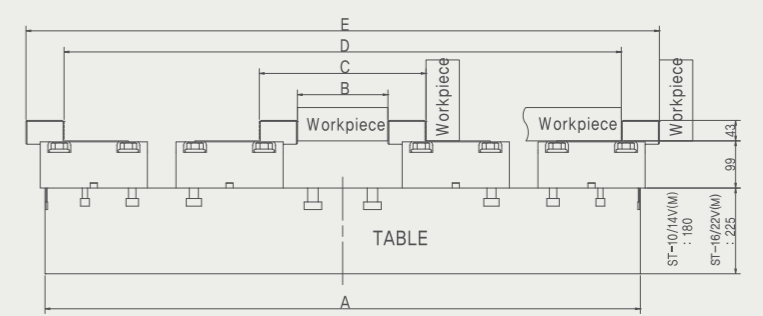
**SLEEVE**

TYPE	L	d
H63-50M	135	Ø50

**표준툴홀더 (STANDARD TOOL HOLDER)**

품명 / Part Name	규격 / Specifications	T1015V(C)	T1622V(C)	품명 / Part Name	규격 / Specifications	T1015V(C)	T1622V(C)
		수량 / EA	수량 / EA			수량 / EA	수량 / EA
BITE HOLDER	BH-22	2	2	FLANGE HOLDER	CFH-17	1	1
BORING BAR	CBB-10	1	1	FLANGE HOLDER	CFH-22	1	1
BITE HOLDER	CBH-18	1	1	BORING BAR	BB-42	1	1
FLANGE HOLDER	CFH-14	1	1	SLEEVE	H63-50M	1	1

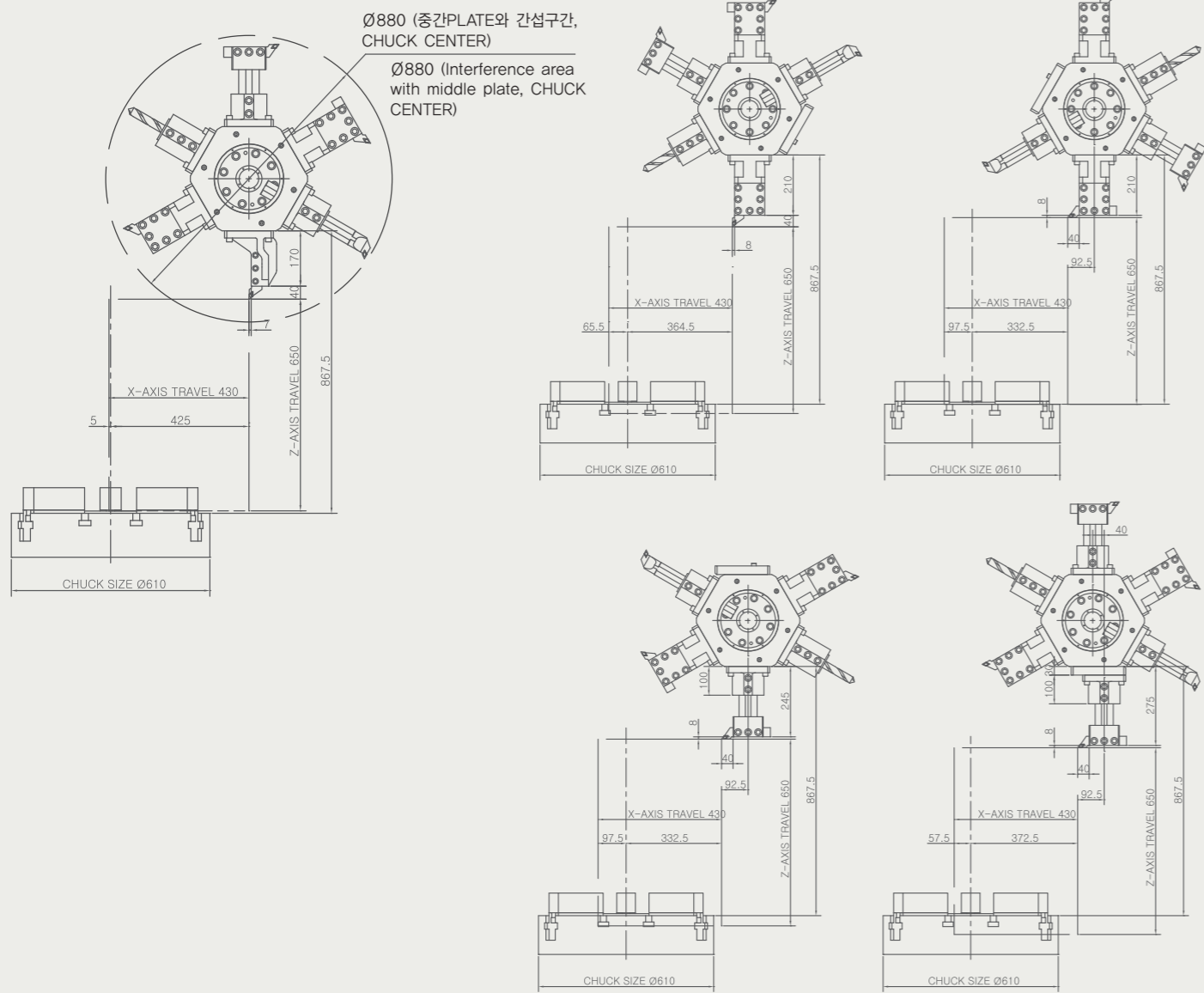
**척킹범위 (CHUCKING RANGE)**



기종 / MODEL	A	B	C	D	E	비고 / NOTE
T1015V(C)	Ø1040	200	360	940	1100	STANDARD, 2-STEP 4-JAW
T1015V(C)	Ø1250	190	350	1170	1330	OPTION, 2-STEP 4-JAW
T1622V(C)	Ø1600	230	390	1520	1680	STANDARD, 2-STEP 4-JAW

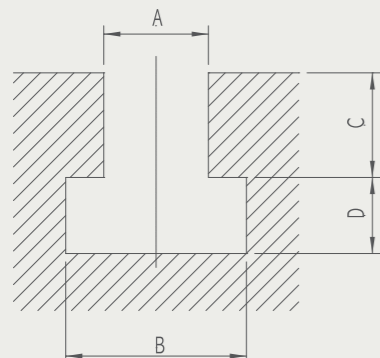
공구간섭도 (INTERFERENCE DIAGRAM)

원점위치와 스트로크 (ORIGIN POINT AND STROKE)



• PL-4 HOLDER PLATE 부착시 가공영역 증대  
(It is possible to increase the range of the machining when the PL-4 HOLDER PLATE is attached)

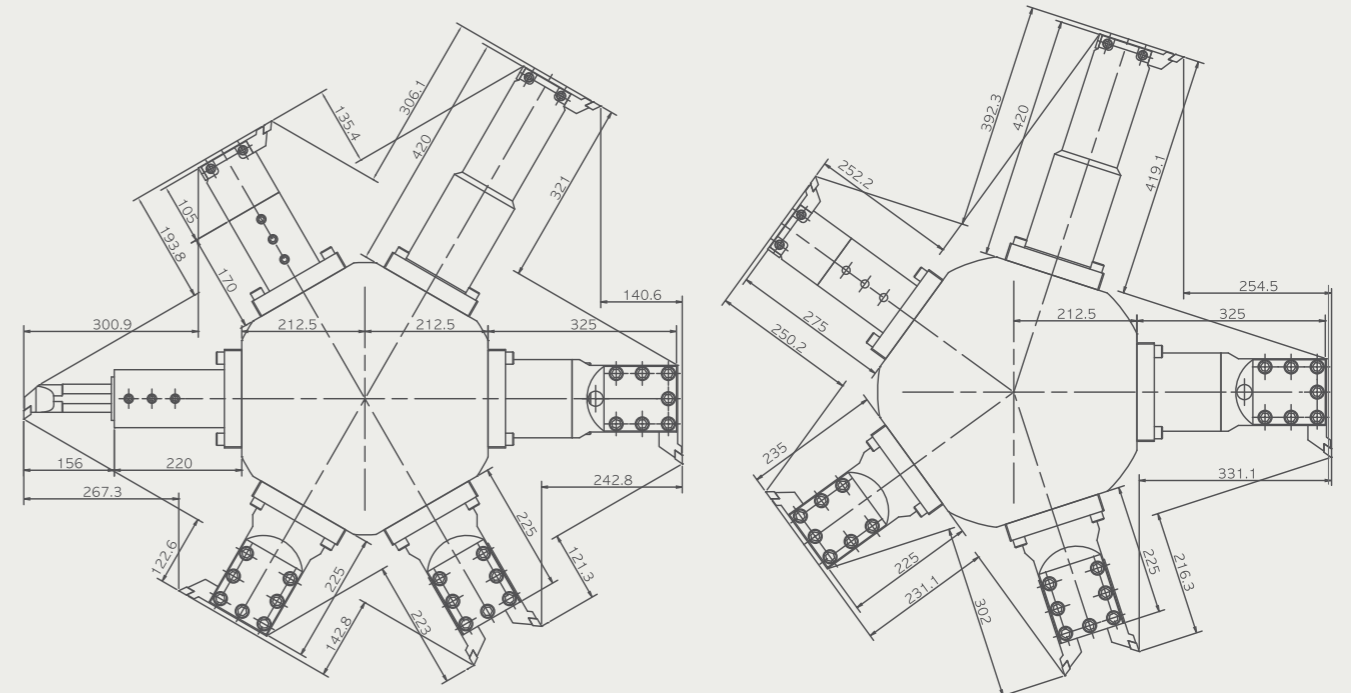
CHUCK의 T홈부치수 (T-SLOT DIMENSION OF CHUCK)



(unit:mm)

기종 / MODEL	A	B	C	D	비고
T850VD	22	37	22	16	Ø530,Ø610 HYD. CHUCK
T900V	22	37	22	16	Ø530,Ø610 HYD. CHUCK
T1015V(C)	22	37	22	16	Ø1000,Ø1250 HYD. CHUCK
	22	37	29	16	Ø1040,Ø1250 MANUAL CHUCK
T1622V(C)	22	37	22	16	Ø1600 HYD. CHUCK
	22	37	29	16	Ø1600,Ø1800 MANUAL CHUCK

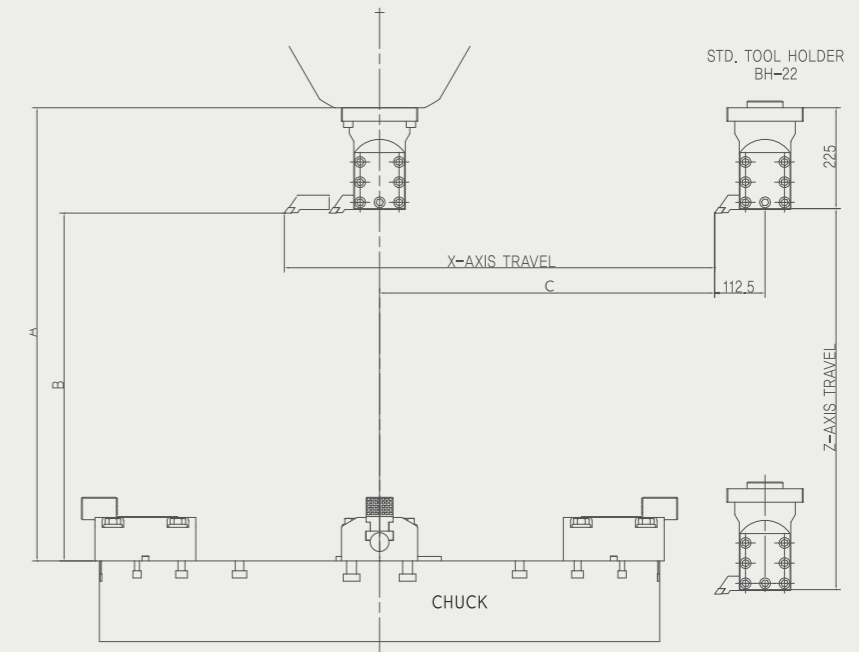
공구간섭도 (INTERFERENCE DIAGRAM)



» TURRET DISC 6각 / TURRET DISC HEXAGON

» TURRET DISC 5각 / TURRET DISC PENTAGON

원점위치와 스트로크 (ORIGIN POINT AND STROKE)



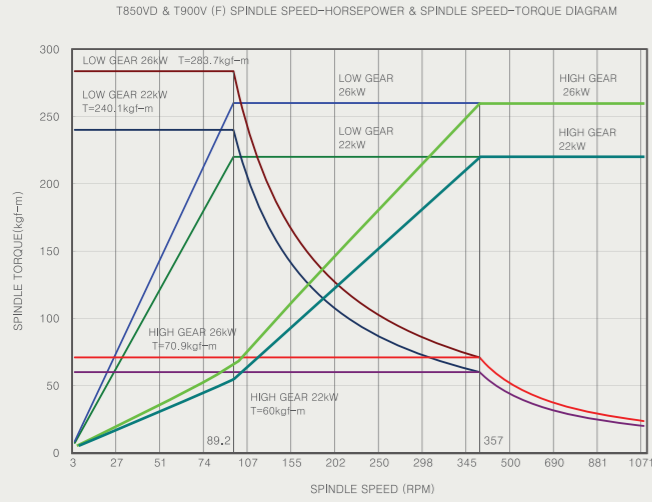
(unit:mm)

기종 / MODEL	A	B	C	Z-AXIS TRAVEL	X-AXIS TRAVEL	비고
T1015V(C)	1017	782	747.5	850	960 (100+860)	2-STEP INDEPENDENT MANUAL CHUCK
	960	725	747.5	850	960 (100+860)	HYD. CHUCK
T1622V(C)	986	751	1107.5	900	1270 (50+1220)	2-STEP INDEPENDENT MANUAL CHUCK
	881	646	1107.5	900	1270 (50+1220)	HYD. CHUCK

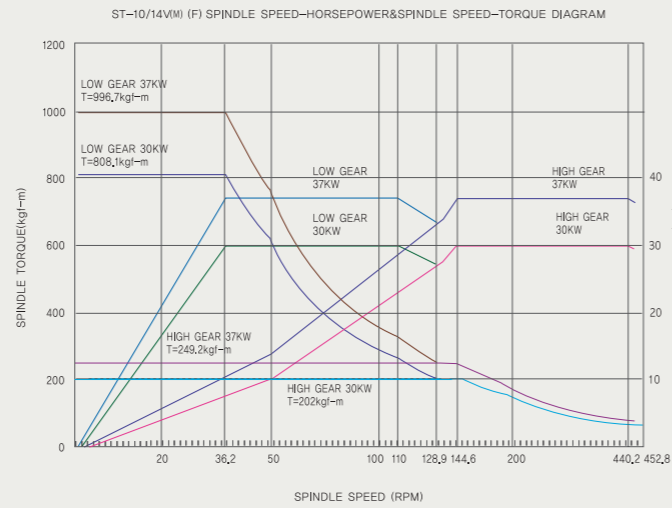


스핀들출력 & 토오크 (SPINDLE POWER & TORQUE)

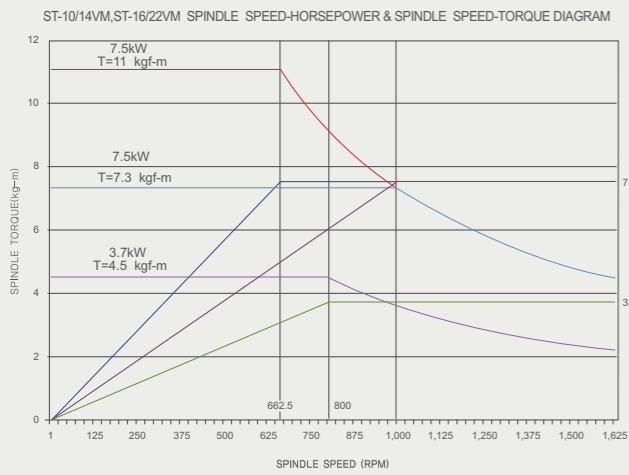
» A.C 22/26 kW / T850VD • T900V



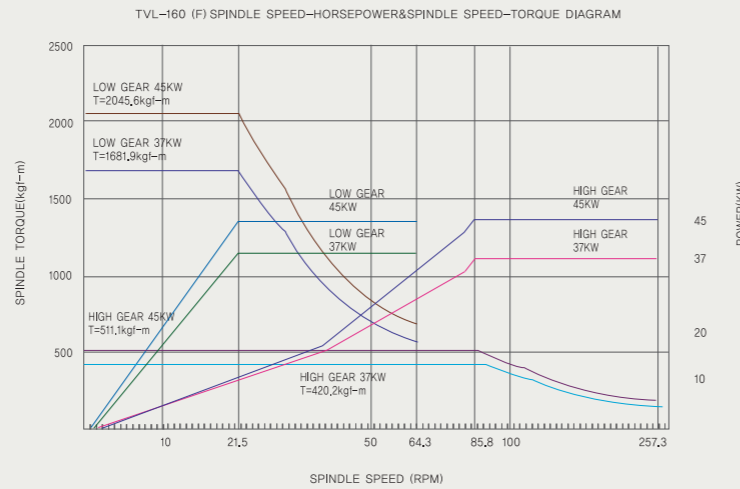
» A.C 30/37 kW / T1015V(C)



» T1015V(C) T/MILL 스펀들출력 & 토오크

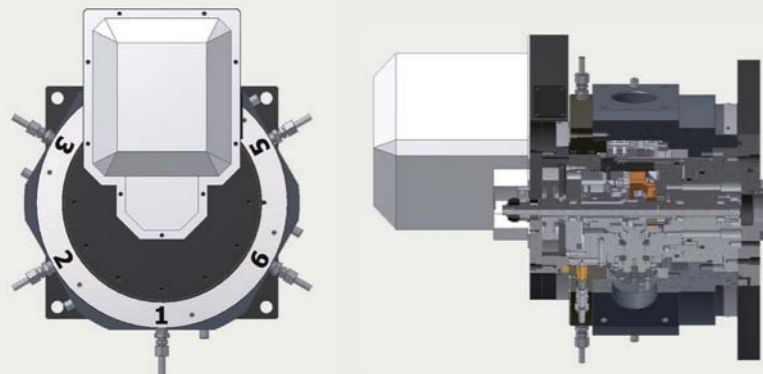


» A.C 37/45 kW / T1622V(C)



» TURNMILL TURRET(OPTION)

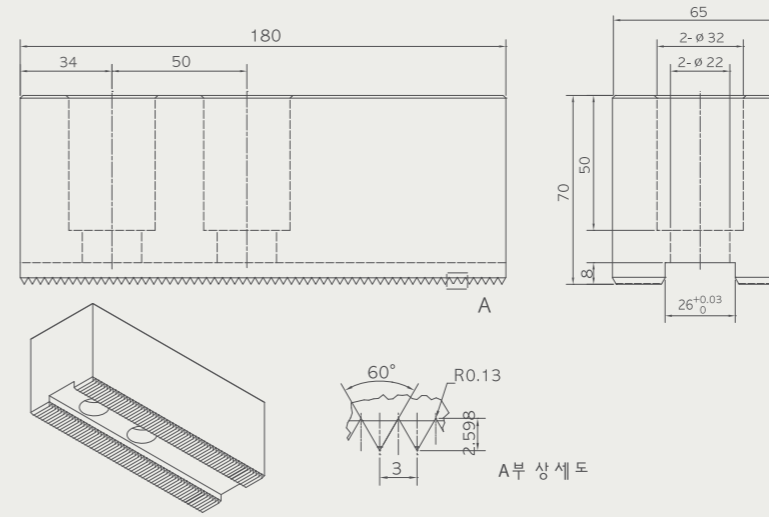
- TURNMILL TURRET는 T1015VC & T1622VC(FANUC) 6각만 적용됨.  
TURNMILL TURRET is only applied to T1015VC & T1622VC(FANUC) with 6 angles
- Straight milling unit 1ea만 제공되며 Angular milling unit, Tap collect는 별도구매  
It only provides one for each unit of straight milling and angular milling unit, and tap collect have to be purchased separately



• Material : SM45C

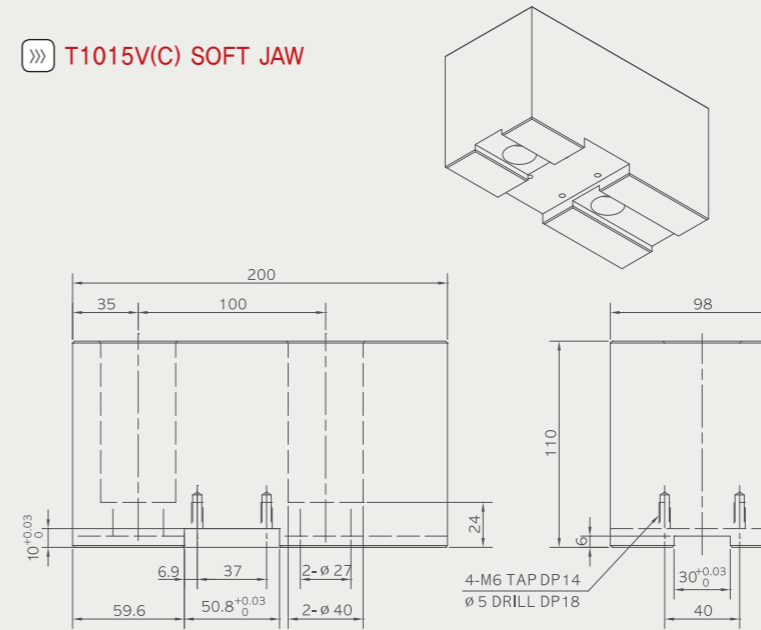
U-DRILL (mm)	스핀들속도 (mm)	회전당이송 (mm/rev)	스핀들부하 (%)
Ø17.5	1200	0.06	30%
Ø24	1200	0.1	85%

» T850VD / T900V SOFT JAW



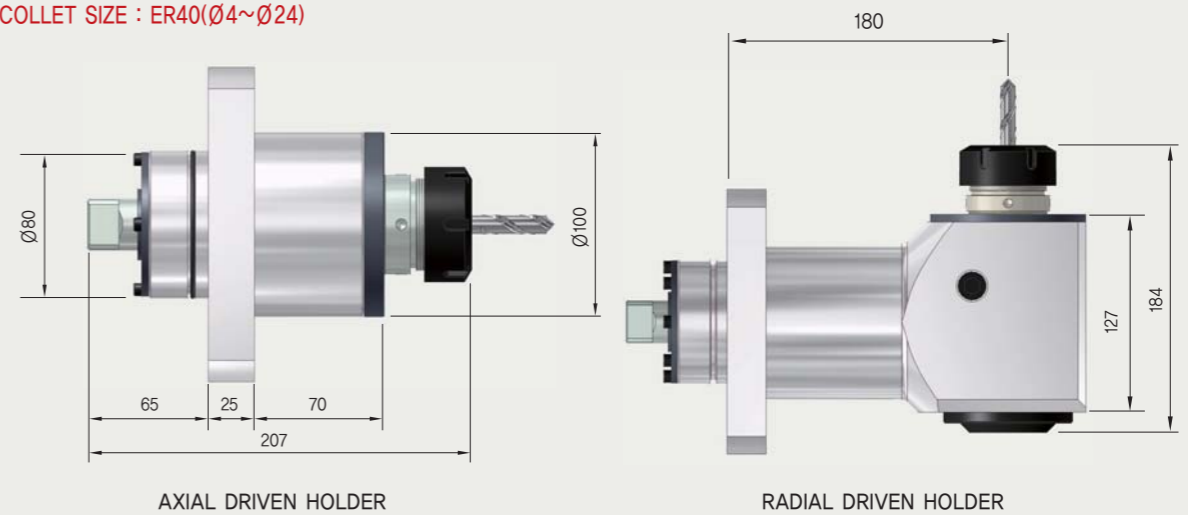
기종/MODEL	척사이즈 (mm)	형식(FORM)	비고
T900V	Ø530	유압척 3-JAW /Hydraulic chuck 3-jaw	CAS-21
	Ø610		CAS-24
T850VD	Ø530		CAS-21
	Ø610		CAS-24

» T1015V(C) SOFT JAW



기종/MODEL	척사이즈 (mm)	형식(FORM)	비고
T1015V(C)	Ø1000	유압척 3-JAW /Hydraulic chuck 3-jaw	CAS-40
	Ø1250		CAS-50

» T1015VC & T1622VC 회전공구 유니트 COLLET SIZE : ER40(Ø4~Ø24)



**기계 사양 (MACHINE SPECIFICATION)**

항목(Description)		UNIT	T900V	T850VD	T1015V(C)	T1622V(C)	비고	
가능 용량 capacity	테이블 직경 / Table dia.	mm	610	610	1000	1600	-	
	최대가공경 / Max.turning dia.	mm	800	800	1300	2000	-	
	최대스윙 / Max.swing	mm	900	850	1500	2200(2300)	-	
	최대선삭높이 / Max.turning height	mm	650	650	782 / [725]	751 / [646]	-	
	최대회전력 / Max.torque	kgf.m	251.5	251.5	997	2045	-	
	최대가공물 중량 / Max.turning weight	kgf	2,000	2,000	4,000	10,000	-	
이송거리 travel	상하이송거리(Z) / Z-axis travel	mm	650	650	850	900	-	
	좌우이송거리(X) / X-axis travel	mm	40+385	40+385	100+860	50+1220	-	
테이블 table	최대회전수 / Speeds	rpm	1200	1200	450	256	-	
	변속단 / Speed range shift	step	2	2	2	2	-	
	INDEX 분할각도(선택사항) / Angle of index division (Optional)	deg	-	-	0.001	0.001	-	
공구대 turret	고정공구 Fixation tool	사용공구수 / No.of tools	EA	6	6×2	6	4	-
		바이트크기 / Tool size	mm	□25/∅50	□25/∅50	□32/□25/∅63	□32/□25/∅63	-
	회전공구(선택사항) Speed tool(optional)	출력 / Output	kw	-	-	3.7 / 7.5	3.7 / 7.5	FANUC
		회전수 / Speeds	rpm	-	-	1600	1600	-
급이송속도 rapid speed	X축 / X-axis	m/min	15	15	10	10	-	
	Z축 / Z-axis	m/min	15	15	10	10	-	
절삭이송속도 cutting federate	X,Z축 / X,Z-axis	m/min	1~5	1~5	1~5	1~5	-	
서보 & 스피들 모터 servo&spindle motor	X축 이송모터 / X-axis feeding motor	N·m	12	12	30	30	FANUC	
	Z축 이송모터 / Z-axis feeding motor	N·m	22	22	22	30	FANUC	
	주축모터 / Spindle motor	kw	22 / 26	22 / 26	30/37	37/45	FANUC	
크기 size	설치면적 / Required floor space	mm	1837×3800	4837×3057	5005×3955	4317×4725	-	
	높이 / Machine height	mm	3366	3366	4343	4378	-	
	기계중량 / Machine weight	kg	9000	13000	14000	19000	-	
소요전원 power sources	전원용량 / Power capacity	KVA	50	50×2	70	70	-	
	수치제어장치 / CNC controller		FANUC OIT-D	FANUC OIT-D	FANUC OIT-D	FANUC OIT-D	-	
	Table lub. motor	W	200	200	200	370	-	
	Zf-box lub. motor	W	-	-	200	-	-	
	Lubrication motor	W	46	46	46	46	-	
	Coolant pump	W	900	900×2	900×2	400	-	
	Hydraulic motor	Kw	3.7	7.5	7.5	3.7(7.5)	-	

- [ ] 는 유압척 부착시 치수임
- T1015V(C)척사이즈 ∅1250mm경우 최대 회전수는 360rpm이고 최대 가공물 중량은 3,500kgf임.
- T1015VC&T1622VC 최대 가공높이는 소비자의 요구에 따라 변경가능
- TURNMILL TURRET은 T1015VC & T1622VC 6각(FANUC)에 한함
- NC사양은 SENTROL, SIEMENS도 가능

- [ ] is when attaching hydraulic chuck.
- The maximum number of rotations is 360rpm in case of chuck size of ∅1250mm.
- And Max. turning weight is 3,500kgf.
- The maximum cutting height of T1015VC & T1622VC can be changed according to the customer's demand.
- TURNMILL TURRET is restricted to hexagonal T1015VC & T1622VC FANUC model.
- NC Specifications are available for SENTROL and SIEMENS models.

**수치제어 사양 (T850VD/T900V/T1015V(C)/T1622V(C))**

FANUC OiT		SENTROL 2-L	
<b>축 제어 / Controlled axis</b>		<b>축 제어 / Controlled axis</b>	
제어축수 (Controlled axis)	2축(X,Z)	제어축수 (Controlled axis)	2축(X,Z)
동시제어 축수 (Simultaneously controlled axis)	2축	동시제어 축수 (Simultaneously controlled axis)	2축
최소입력단위 (Least command increment)	0.001mm/0.001°	최소입력단위 (Least command increment)	0.001mm/0.001°
미러이미지 (Mirror image)	각축	미러이미지 (Mirror image)	각축
스트로크 리미트 체크1 (Stored stroke check 1)		스트로크 리미트 체크1 (Stored stroke check 1)	
<b>이송속도 / Feed function</b>		<b>이송속도 / Feed function</b>	
조그이송 (Jog feed)	0~2000mm/min	조그이송 (Jog feed)	0~1260mm/min
피드오버라이드 (Feedrate override)	0~150%(단위:10%)	피드오버라이드 (Feedrate override)	0~150%(단위:10%)
급이송 오버라이드 (Rapid traverse override)	FO, 25, 50, 100%	급이송 오버라이드 (Rapid traverse override)	RT0, RT1, RT2
핸들이송 배율 (Manual handle feedrate)	x1, x10, x100	핸들이송 배율 (Manual handle feedrate)	x1, x10, x100
<b>주축제어 / Spindle speed function</b>		<b>주축제어 / Spindle speed function</b>	
주축속도 지령 (Spindle speed command)	S4행	주축속도 지령 (Spindle speed command)	S4행
주축속도 오버라이드 (Spindle speed override)	50~120%(단위:10%)	주축속도 오버라이드 (Spindle speed override)	50~120%(단위:10%)
주속일정 제어 (Constant surface speed control)	G96	주속일정 제어 (Constant surface speed control)	G96
<b>프로그램 / Program input</b>		<b>프로그램 / Program input</b>	
절대/증분지령 (Absolute/Incremental command)	G90/G91	절대/증분지령 (Absolute/Incremental command)	G90/G91
회전 당 이송/분당 이송 (Feed per minute/revolution)	G96/G94	회전 당 이송/분당 이송 (Feed per minute/revolution)	G96/G94
파트 프로그램 저장 (Part program storage)	640/1280m	파트 프로그램 저장 (Part program storage)	7200m
등록프로그램 개수 (No of registered programs)	400개	등록프로그램 개수 (No of registered programs)	9999개
확장편집기능 (Extended part program editing)	복사/이동/변경	확장편집기능 (Background editing)	
운전 중 편집 (Background editing)		옵션 블록 스킵 (Optional block skip)	1개
Custom Macro B		Custom Marco B	
워크좌표계 (Workpiece coordinate system)	G54~G59	워크좌표계 (Workpiece coordinate system)	G54~G59
프로그램 데이터 입력 (Programmable data input)	G10	프로그램 데이터 입력 (Programmable data input)	G10
단일형 고정 사이클 (Canned cycle)		단일형 고정 사이클 (Canned cycle)	
복합 고정 사이클 1,2 (Multiple repetitive cycle 1,2)		복합 고정 사이클 1,2 (Multiple repetitive cycle 1,2)	
면취 & 코 R (Optional Chamfering/Corner R)		면취 & 코 R (Optional Chamfering/Corner R)	
<b>보간기능 / Interpolation function</b>		<b>보간기능 / Interpolation function</b>	
직선보간/원호보간 (Linear/Circular interpolation)	G01/G02,G03	직선보간/원호보간 (Linear/Circular interpolation)	G01/G02,G03
연속나사절삭 (Continuous threading)		연속나사절삭 (Continuous threading)	
가변리드 나사절삭 (Variable lead threading)		가변리드 나사절삭 (Variable lead threading)	
극좌표 보간 (Polar coordinate interpolation)		극좌표 보간 (Polar coordinate interpolation)	
<b>통신기능 / Communication function</b>		<b>통신기능 / Communication function</b>	
테이프 코드 (Tape code)	EIA/ISO 자동판별	테이프 코드 (Tape code)	EIA/ISO 자동판별
통신포트 (Communication port)	RS~232C/CF CARD/USB/Ethernet	통신포트 (Communication port)	RS~232C
DNC운전 (DNC operation)		DNC운전 (DNC operation)	
<b>보정기능 / Compensation function</b>		<b>보정기능 / Compensation function</b>	
기역형 피치 오차 보정 (Stored pith error compensation)		기역형 피치 오차 보정 (Stored pith error compensation)	
백래쉬 보정 (Backlash compensation)		백래쉬 보정 (Backlash compensation)	
원호 돌기 보상	백래쉬 가속기능	공구기능 / Tool function	
<b>공구기능 / Tool function</b>		<b>공구기능 / Tool function</b>	
공구보정 개수 (Tool offset pairs)공구보정 개수	64개	공구보정 개수 (Tool offset pairs)공구보정 개수	200개
공구위치오프셋 (Tool offset)		공구위치오프셋 (Tool offset)	
공구 보정량 측정치 직접입력 (Direct input of tool offset value measured)		공구 보정량 측정치 직접입력 (Direct input of tool offset value measured)	
공구형상 메모리보정 (Tool offset memory C)		공구형상 메모리보정 (Tool offset memory C)	
<b>조작지원 / Operation</b>		<b>조작지원 / Operation</b>	
Machine lock/Single block/Run hour and parts count display		Machine lock/Single block/Run hour and parts count display	
Program/Sequence number search/Memory protect/Z-axis neglect		Program/Sequence number search/Memory protect/Z-axis neglect	
2nd reference point return/Clock display/Program check/Dry run		2nd reference point return/Clock display/Program check/Dry run	
Manual absolute/Self diagnostic/Emergency stop		Manual absolute/Self diagnostic/Emergency stop	
Cycle start/Feed hold		Cycle start/Feed hold	
<b>기타 / Others</b>		<b>기타 / Others</b>	
표시장치 사양 (Display unit)	8.4" 칼라 LCD	표시장치 사양 (Display unit)	10.4" 칼라 TFT
그래픽기능 (graphic display)	칼라그래픽	그래픽기능 (graphic display)	칼라그래픽
<b>선택사항 / Options</b>		<b>선택사항 / Options</b>	
매뉴얼가이드 Oi (Manual guide Oi)		매뉴얼가이드 Oi (Manual guide Oi)	