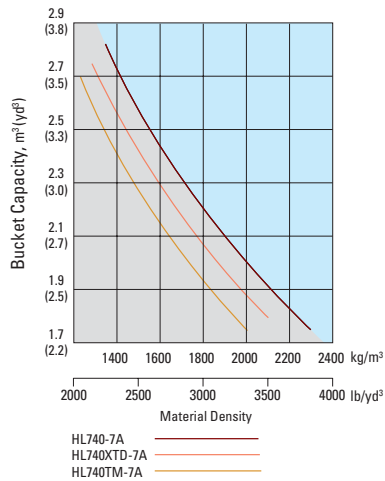


Bucket Selection Guide



Supplemental Specifications

Description	Change in operating weight kg(lb)	Change in static tipping load-straight kg(lb)	Change in static tipping load-40° turn kg(lb)
17.5-25 12PR L2	-308 (-679)	-218 (-481)	-192 (-423)
17.5-25 12PR L3	-248 (-547)	-175 (-386)	-155 (-342)
20.5-25 16PR L2	-64 (-141)	-45 (-99)	-40 (-88)
17.5 R25 XHA *	-160 (-353)	-113 (-249)	-100 (-220)
20.5 R25 XHA *	+507 (+1,118)	+358 (+789)	+317 (+699)

Standard Equipment

Electrical system

- Alternator, 70A
- Alarms, audible and visual
 - air filter clogging
 - transmission error
 - alternator voltage
 - brake oil pressure
 - engine oil pressure
 - parking brake
 - fuel level
 - hydraulic oil temperature
 - coolant temperature
 - service brake oil pressure
- Batteries, 850 CCA, 12V, (2)
- Gauges
 - engine coolant temperature
 - fuel level
 - hydraulic oil temperature
 - speedometer
 - transmission oil temperature
 - voltmeter
- Horn, electric
- Indicator lights
 - clutch cut-off
 - high beam
 - turn signal
 - work light
- LCD Display
 - clock and fault code
 - operating hour counter
 - engine rpm
- transmission gear range indicator
- job time and distance
- temperature(coolant, hydraulic oil, T/M oil)
- Lighting system
 - 2 dome lights
 - 2 stop and tail lights
 - 4 turn signals
 - brake lights(counterweight)
 - license plate light
 - head light
 - 2 on front tower
 - working lights
 - 2 on front roof
 - 2 on grill
- Switches
 - buzzer stop
 - clutch cut-off
 - hazard
 - Ignition key, start/stop switch
 - main light(illumination and head light)
 - parking
 - rear wiper & washer
 - work light
 - operating mode (Power/Econo)
 - full automatic transmission
- Main disconnect switch
- Starter, electric
- Starting and charging system(24-volt)

Cab

- Cab, ROPS/FOPS (sound suppressed and pressurized) with :
 - cigar lighter & ashtray
 - coat hook
 - front/rear window defroster
 - intermittent wiper and washer, front and rear
 - personal storage space: holder, can and cup
 - rear view mirrors (2 inside)
 - rear view mirrors (2 outside)
 - seat belt
 - seat, adjustable suspension with armrests
 - tilt / telescopic steering column
 - steering wheel with knob
 - sunvisor (front window)
 - tinted safety glass
- Magazine box
- Pedals
 - one accelerator pedal
 - one brake pedal
- Rubber floor mat
- Wrist rest

Engine

- Antifreeze
- Engine, Cummins QSB6.7
 - Low Emission Diesel, Tier-III
- 2 operating mode (poewr & econo)

- Engine enclosure, lockable
- Engine fuel priming pump
- Fan guard
- Fuel/water separator
- Fuel warmer
- Muffler, under hood with large exhaust stack
- Precleaner, engine air intake
- Radiator (Deaeration type)
- Starting aid (air intake heater)
- Water sensor on fuel filter

Power Train

- Brakes : Service, enclosed wet-disc Differential, Front : limited Slip Rear : conventional
- Parking brake
- Torque converter
- Transmission, computer-controlled, electronic soft shift, auto-shift and quick-shift features included
- Transmission oil cooler

Hydraulics

- Boom lock safety valve
- Boom kickout, automatic
- Bucket positioner, automatic
- Diagnostic pressure taps
- Hydraulic system,
 - 2 spool, single lever, pilot control for boom and bucket actuation

- Steering, load-sensing
- Remote cooling fan, hydraulically-driven, temperature sensing type

Others

- Articulation locking bar
- Coolant level sight gauge
- Counterweight
- Door and cab locks, one key
- Doors, service access(locking)
- Drawbar with pin
- Engine oil level dipstick gauge
- Ergonomically located and slip resistant, left & right
 - handrails
 - ladders
 - platforms
 - steps
- Fenders(front/rear)
- Guard, bucket cylinder rod
- Hydraulic oil level sight gauge
- License plate bracket
- Lift and tie-down hooks
- Steering stops, cushioned
- Tires(20.5-25, 16PR,L3)
- Transmission oil level dipstick gauge
- Vandalism protection caplocks

■ Some of the Photo may include optional equipment.

Optional Equipment

- 24-volt to 12-volt DC converter
- Air condition :
 - air conditioner
 - air conditioner with heater
 - heater
- Alarm, back-up
- Beacon light, rotating
- Lighting, auxiliary, 4 on roof
- Cutting edge, bolt-on type
- Differential, Front : no spin Rear : limited slip
- Emergency steering system
- Fire extinguisher
- Hourmeter
- High lift arrangement with optional counterweight, 760 kg (1,680 lb)
- Hydraulic control, 2 lever
- Hydraulic control, 3 lever
- Hydraulic arrangement 3-valve

- Mud guard
- Operator suit
- Radio MP3 player
- Ride control system
- Seat
 - 2" static seat belt & adjustable mechanical suspension(vinyl)
- 3" static seat belt & adjustable mechanical suspension

- 3" retractable seat belt & adjustable air suspension
- Tires :
 - 17.5 - 25, 12PR, L2
 - 17.5 - 25, 12PR, L3
 - 20.5 - 25, 16PR, L2
 - 17.5 R25 XHA*
 - 20.5 R25 XHA*

- Tool kit
- Tooth, 1 piece, bolt-on type
- Guards
 - crankcase
 - transmission
- Wheel chock
- Window, sliding (left and right side)
- Reversible cooling fan

Standard and optional equipment may vary. Consult your Hyundai dealer for more information. The machine shown may vary according to territorial specification.

HYUNDAI
HEAVY INDUSTRIES CO.,LTD.
CONSTRUCTION EQUIPMENT

Head Office
1000 BANGEOJINSUNHWAN-DORO, DONG-GU, ULSAN, 682-792, KOREA
TEL:(82)52-202-7722, 9807 FAX:(82)52-202-7720

PLEASE CONTACT

HYUNDAI
HEAVY INDUSTRIES CO.,LTD.

Hardworking Hyundai Loaders



■ Some of the Photos may include optional equipment.

New Generation - **HL740-7A**



Meet the new generation wheel loader in Hyundai.

The HL740-7A will give you the satisfaction in higher power,
lower fuel consumption, more comfort and lower emission .

Come and experience what Hyundai has created for you by bringing power and technology.

Engine

- Tier III Low Emission Certificated
- Electronic Engine Control
- Engine Protection & Selfdiagnosis System
- 2 Operating Mode : Power & Econo

Transmission

- 2 Automatic Selection Modes
- 2 Kick Down Function Modes
- AEB Function



■ Some of the Photos may include optional equipment.

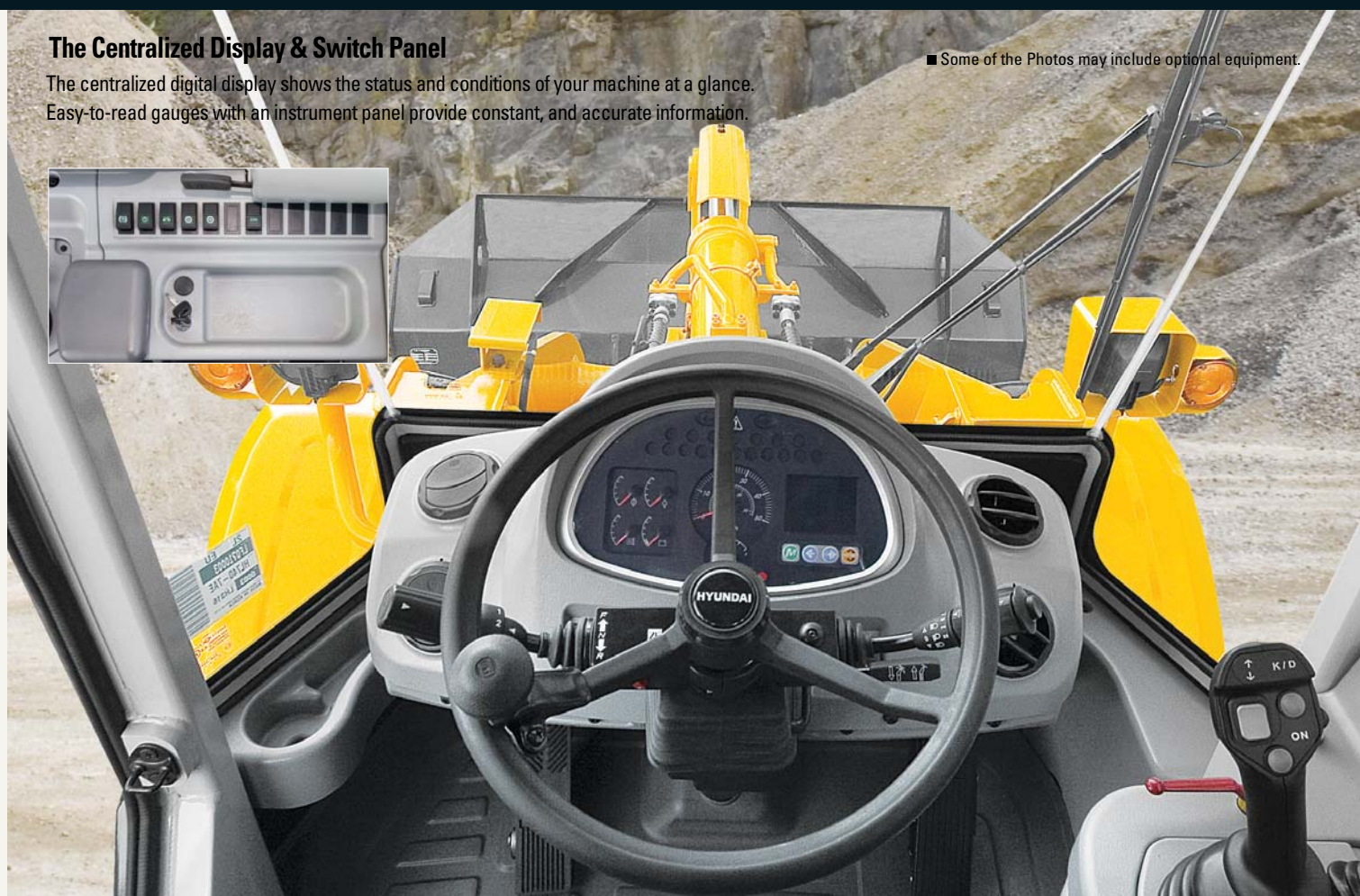
New Generation, Innovative Solution in Construction **HL740-7A**

The Centralized Display & Switch Panel

The centralized digital display shows the status and conditions of your machine at a glance. Easy-to-read gauges with an instrument panel provide constant, and accurate information.



■ Some of the Photos may include optional equipment.



Control Center

The all-new, deluxe operating space is engineered with 3-D modeling for your ultimate control center. The wide, tinted and laminated front windshield has no framing cutting through to ensure excellent visibility.

Adjustable steering column



Joystick Controls

Pilot-operated controls for bucket operation by the Joystick are easy and comfortable to operate.



Finger Control Lever (Option)



FNR Switch on Joystick Control Lever

It is possible to change the direction of travel as well as controlling Hydraulic system.(Option)

Full automatic shift lever



A single lever on the left side of the steering column gives the operator fast, easy control of speed and direction. Push the lever forward to go forward, pull it back for reverse. Travelling is automatically changed from 1st stage to given stage according to travel speed and tractive effort. The operator can select two kinds of automatic modes (1st ↔ 4th, 2nd ↔ 4th). These exclusive features contribute to a step-up in productivity and reduction of operator's fatigue.

The Air Conditioning and Heating System

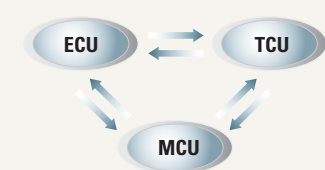


The operator can easily control the temperature and air flow . The defroster on the front windshield and rear window makes it convenient for winter working usage.



- ①Cigar Jack
- ②Cup Holder
- ③Magazine Box

Up-to-Date-technology CAN System



Engine control Unit(ECU), Transmission control Unit(TCU) and Machine control Unit(MCU) realize the optimal performance through the mutual CAN communications.

Ride control system (optional)

Ride control system functions such as shock absorbers gives smooth operation without losing of the load even over a rough terrain condition. Therefore the system allows faster travelling and improved safety and productivity.



■ Some of the Photos may include optional equipment.

New Generation, Innovative Solution in Construction **HL740-7A**



■ Some of the Photos may include optional equipment.

CUMMINS QSB6.7



The CUMMINS QSB6.7 electronic control engine combines full-authority electronic controls with the reliable performance. The combination of high pressure common rail system and advanced in-cylinder combustion technology results in increased power, improved transient response and reduced fuel consumption. And the QSB6.7 used advanced electronics controls to meet the emission standards (EPA Tier3, EU StageIII-A)

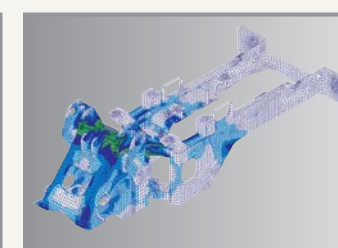
A Well Rounded System

Maximize the productivity of your business with HL740-7A.
With our vast experience in the production of construction equipment, Hyundai is able to meet the demands of consumers.



Bucket cylinder guard

This guard helps to prevent possible damage from load material.



High-rigidity frames

Front and rear frames are designed for work in the toughest applications to provide high rigidity for the power train and loader equipment. The high-rigidity frames, together with the reinforced loader linkage, resist loading stress and shock.



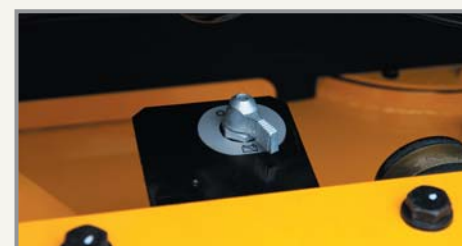
Axle

Inboard type brake discs.



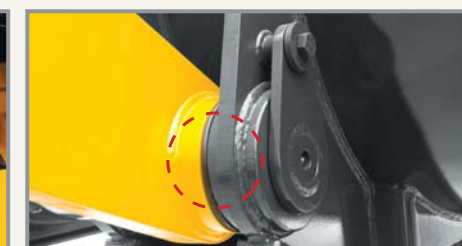
2 Operating mode

- **Econo Mode**
Maximum fuel efficiency for general loading
- **Power Mode**
Maximum power output for hard digging or climb hill



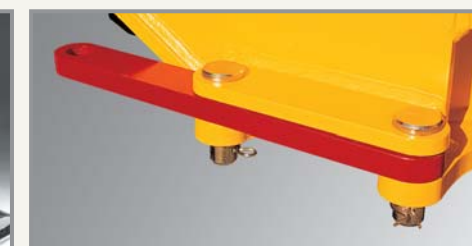
Battery master switch

A master switch disconnects the battery power to protect the electrical system from excessive electrical drainage.



Sealed loader linkage

Fully protected fitting and the sealed loader linkage with dust seals and o-ring will extend lubrication intervals remarkably.



Frame lock

Machine can be locked by this locking bar to prevent movement during transportation.

Multi Function Transmission



The newly developed transmission control represents the beating heart of transmission. The hydraulic system for gearshifts is working with proportional valves, which allows very precise control of the clutches. For each gearchange, the control unit performs a monitoring function to ensure that the specified shift curve is adhered to the range, and readjusts the shift pressure applied to the clutches accordingly. This results in smooth gearshifts-even under the load-with no traction interruptions. This helps to avoid standstill of the vehicle, sudden load changes and torque peaks under all conditions, for example application on steep terrain with full load. In addition, there is the option for the driver to make gearshifts manually.

Accessible and Serviceable

An ideal arrangement of component parts ensures easy access and convenience for maintenance. Highly accessible engine compartment assures fast and efficient maintenance.

New Generation, Innovative Solution in Construction **HL740-7A**



Accessible grease fittings
Grease fittings are highlighted and available around the machine for the fast access when doing your service checks.



Simple air filter replacements
The air cleaner is easily replaceable by turning the wing nut on the outer shell counterclockwise.



Chromium - Plated PIN is applied
With the application of Chromium Plated PIN, durability and precision are improved and the life cycle became longer.



Remote type drain port
It is now easier to change your engine oil, coolant and hydraulic oil with the remote drain port.



Hydraulic tank
The hydraulic tank is located behind the cab to increase the accessibility of hydraulic hoses and pipings.



Oil sight gauge
The hydraulic oil check sight gauge is installed on the side of the hydraulic tank for the convenient checks from ground level.



Transmission oil port
The transmission oil change port is also located for with open accessibility and comes with an anti-vandalism lock for your machine protection.



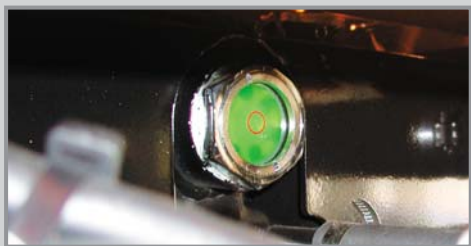
■ Some of the Photos may include optional equipment.



Central electric controllers & Fuse box
Electric controllers for Hyundai loader are centralized to improve serviceability. A concentrated fuse box for easy inspection.



Cabin air fresh filter
The internal pressure is maintained to be slightly higher than that of outside to exclude dust and to reduce noise levels.



Coolant sight gauge
The coolant sight gauge is installed on the top of radiator for convenient checks of coolant level.

Easy Access to All Engine Accessories
Here you find the engine oil check, and the main and pre-filters. The large access engine-side-panels permit easy and safe inspections. The fuel and oil filters can be spun on and off for quick replacements.



Up-to-date hydraulic remote cooling fan
The minimum fuel consumption and low noise is realized by applying hydraulic cooling fan that senses coolant temperature, intake air temperature, transmission oil temperature and hydraulic oil temperature.
Reversible cooling fan(Optional)
Optional reversible cooling fan that ejects debris in the radiator and cooler.

Specification

Engine

Maker/Model	CUMMINS QSB6.7	Bore x Stroke	107 mm (4.21") x 124 mm (4.88")
Type	Watercooled, 4-cycle, turbocharged, charge aircooled direct injection, electronic controlled diesel engine	Displacement	6.7 ℓ (409 cu in)
Gross power	145HP(108 kW) / 2,100rpm	Compression ratio	17.2 : 1
Net power	138HP(103 kW) / 2,100rpm	Air cleaner	Dry, two stage dual elements
Maximum torque	69kg·m(499 lb·ft) / 1,400rpm	Alternator	24V, 70 Amp
No. of cylinders	6	Battery	2 x 12V, 80 Ah.
		Starting motor	24V, 3.7 kW
		Cooling	Hydraulic remote cooling system

※Net power output of standard engine as installed in this vehicle(per SAE J1349) complete with fan, air cleaner, alternator, water pump, lubricating oil pump and fuel pump. No derating for continuous operating required up to 3,048m (10,000ft). This engine meets the EPA(Tier III) / EU(Stage III-A) Emission regulation.

Transmission

Torque converter type	3-elements, single-stage single-phase	Travel speed	km/h (mph)
Stall torque ratio	2,549 : 1	Forward	6.4(4.0)
Tire	20.5-25, L3		11.7(7.3)
			22.3(13.9)
			36.3(22.6)
		Reverse	6.8(4.2)
			12.4(7.7)
			23.4(14.5)

※Full automatic power shift, countershaft type with soft-shift in range and direction. Properly matched torque converter to engine and transmission for excellent working ability

Axles

Drive system	Four-wheel drive system	Hub reduction	Planetary reduction at wheel end
Mount	Rigid front axle and oscillating rear axle	Differential	Limited slip (front) & Conventional (rear)
Rear axle oscillation	± 12° (total 24°)	Reduction ratio	22.846

Hydraulic System

Type	Open-centered, tandem circuit system. Pilot-operated controls. Closed with pressure and vacuum relief.	Bucket Controls	Type	Pilot operated lift and tilt circuit, single-lever(joystick) control standard.
Pump	Helical gear type, 179 liters/min (46.8 USgpm)@governed rpm		Lift Circuit	The valve has four functions ; raise, hold, lower and float. Can adjust automatic kickout from horizontal to full lift.
Control Valve	Two function valve with single or two lever controls : Optional third-function valve with auxiliary lever.		Tilt Circuit	The valve has three functions ; tilt back, hold and dump. Can adjust automatic bucket positioner to desired load angle.
Relief Valve Setting	220 kg/cm ² (3,130 psi)			
Pilot System	Type		Cylinder	Type : Double acting No. of cylinders-bore x stroke; Lift 2-120 mm(4.7") x 738 mm(29.1") Tilt 1-140 mm(5.5") x 500 mm(19.7") 2-100 mm(3.9") x 745 mm(29.3")
Relief Valve Setting			HL740-7A HL740TM-7A	
			Cycle Time	HL740-7A / 740XTD-7A HL740TM-7A
			Raise(with load)	5.6 sec
			Dump	1.2 sec
			Lower(empty)	2.8 sec
			Total	9.6 sec

Specification

Brakes

Service Brakes	Hydraulically actuated, wet disc brakes actuate all 4 wheels independent axle-by-axle system. Single pedal braking including clutch cut off switch.
Parking Brake	Spring-applied, hydraulically released wet disc brake in front axle.
Emergency Brake	When brake oil pressure drops, indicator light alerts operator and parking brake automatically applies.

Steering System

Type	Full hydraulic power steering	
Pump	Gear type, 95 liters/min (26.2 USgpm)@governed rpm	
Relief Valve Setting	210 kg/cm²(2,990 psi)	
Cylinder	Type Bore x Stroke	Double acting 65mm(2.5") x 420mm(16.5")
Steering Angle	40°(each direction)	

Features
- Center-point frame articulation. - Load-sensing, pressure-compensated system.
- Steering-wheel operated metering pump controls flow to steering cylinders.
- Tilt and telescopic steering column.

Service Refill Capacities

Fuel tank	228 liters (60.2 USgal)
Cooling system	35 liters (9.2 USgal)
Crankcase	16 liters (4.2 USgal)
Transmission	24 liters (6.3 USgal)

Front axle	21.2 liters (5.6 USgal)
Rear axle	21.2 liters (5.6 USgal)
Hydraulic tank	105 liters (27.7 USgal)
Hydraulic system (including tank)	165 liters (43.6 USgal)

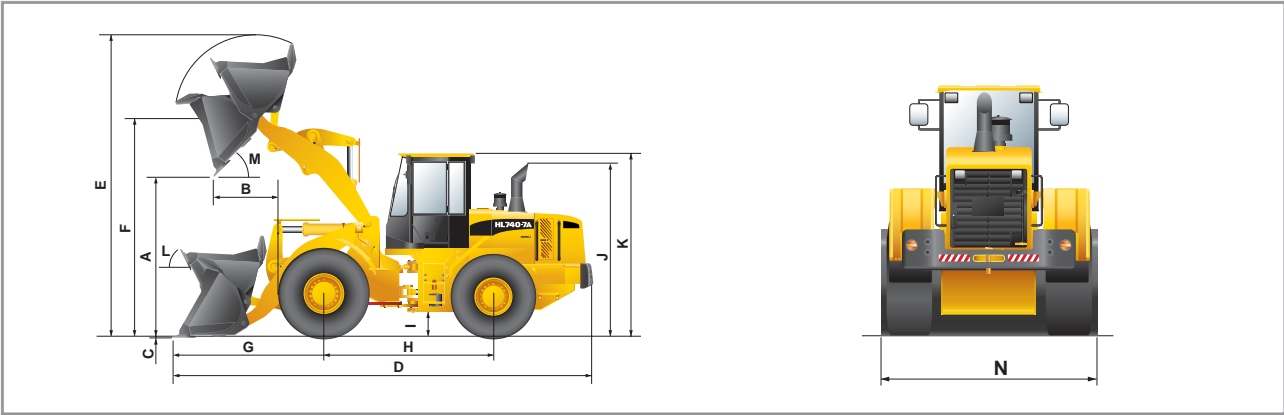
Overview

Description	UNIT	HL740-7A	HL740XTD-7A	HL740TM-7A
Operating weight	kg (lb)	11,550 (25,460)	11,850 (26,120)	12,100 (26,680)
Bucket capacity	Heaped	m ³ (yd ³) 2.1(2.7)	2.1(2.7)	2.0 (2.6)
	Struck	m ³ (yd ³) 1.78 (2.3)	1.78(2.3)	1.7 (2.2)
Breakout force-bucket	kg (lb)	11,880 (26,190)	11,730 (25,860)	10,650 (23,480)
	Straight	kg (lb) 9,180 (20,240)	8,320 (18,340)	7,950 (17,530)
	Full turn	kg (lb) 7,930 (17,490)	7,210(15,900)	6,860 (15,120)

Tires

Type	Tubeless, loader design tires
Standard	20.5-25, 16 PR, L3
Options include	17.5-25, 12 PR, L2 17.5-25, 12 PR, L3 20.5-25, 16 PR, L2 17.5 R25 XHA ★ 20.5 R25 XHA ★

Dimensions



Description	UNIT	HL740-7A	HL740XTD-7A	HL740TM-7A
Bucket Type		General purpose bolt-on cutting edge		
A. Dumping clearance at max. height and 45° dump angle.	mm (ft-in)	2,850 (9' 4")	3,270 (10' 9")	2,915 (9' 7")
B. Reach	Full lift	mm (ft-in) 970(3' 2")	965(3' 2")	1,275 (4' 2")
	7ft height	mm (ft-in) 1,500 (4' 11")	1,860 (6' 1")	1,790 (5' 10")
C. Digging depth		mm (in) 93 (3.7")	130 (5.1")	100 (3.9")
	on ground	mm (ft-in) 7,270 (23' 10")	7,750 (25' 5")	7,550 (24' 9")
D. Overall length	at carry	mm (ft-in) 7,230 (23' 9")	7,720 (25' 4")	7,390 (24' 3")
		mm (ft-in) 5,070 (16' 8")	5,480 (18')	5,150 (16' 11")
E. Overall height (fully raised)	mm (ft-in)	5,070 (16' 8")	5,480 (18')	5,150 (16' 11")
F. Bucket pivot max. height	mm (ft-in)	3,830 (12' 7")	4,250 (13' 11")	3,990 (13' 1")

Description	UNIT	HL740-7A	HL740XTD-7A	HL740TM-7A
G. Front overhang	mm (ft-in)	2,400 (7' 10")	2,810 (9' 3")	2,625 (8' 7")
H. Wheelbase	mm (ft-in)	2,900 (9' 6")	2,900 (9' 6")	2,900 (9' 6")
I. Ground clearance	mm (ft-in)	417 (1' 4")	417 (1' 4")	417 (1' 4")
J. Height over exhaust	mm (ft-in)	3,110 (10' 2")	3,110 (10' 2")	3,110 (10' 2")
K. Height over cab	mm (ft-in)	3,260 (10' 8")	3,260 (10' 8")	3,260 (10' 8")
L. Roll-back angle	on ground	deg 42	42	50
	at carry	deg 47	49	54
M. Dump angle	deg	48	48	50
Clearance circle	mm (ft-in)	11,770 (38' 7")	12,110 (39' 9")	11,840 (38' 10")
N. Overall width	mm (ft-in)	2,550 (8' 4")	2,550 (8' 4")	2,550 (8' 4")