

# MOVING YOU FURTHER!



## **220LC-95** Amphibious Excavator

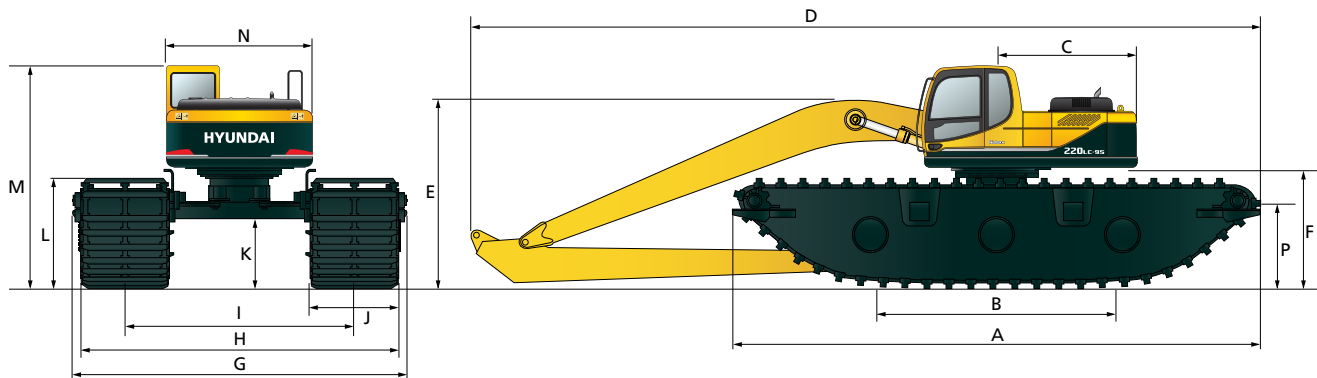
Hyundai Heavy Industries strives to build state-of-the-art earthmoving equipment to give every operator maximum performance, more precision, versatile machine preferences, and proven quality.

# New possibilities Unlimited possibilities

Supreme Market Leader Knocking on the new market

## ■ Dimension

Unit : mm(ft-in)



**20 ton (44,000 lb) class excavator**

<b>A</b> Maximum Track Length	9,630 (379.1")	<b>I</b> Track Gauge (min/max)	2,850/4,330 (112.2"/170.5")
<b>B</b> Track Length On Ground	4,150 (163.4")	<b>J</b> Pontoon Width	1,620 (63.8")
<b>C</b> Rear Upperstructure Length	2,770 (109.1")	<b>K</b> Minimum Ground Clearance	1,300 (51.2")
<b>D</b> Overall Length	13,870 (546.1")	<b>L</b> Track Height	2,030 (79.9")
<b>E</b> Height Of The Boom	3,730 (146.9")	<b>M</b> Overall Cab Height	4,020 (158.3")
<b>F</b> Upperstructure Clearance	2,170 (85.4")	<b>N</b> Upperstructure Overall Width	2,740 (107.9")
<b>G</b> Overall Width (min/max)	4,800/6,280 (189"/247.2")	<b>P</b> Estimated Water Level	1,550 (61.0")
<b>H</b> Track Width (min/max)	4,470/5,950 (176.0"/234.3")		

## ■ Hydraulic Extendable Pontoons :

- ° Constructed with premium grade steel
- ° Designed to be able to float on water
- ° 3 watertight compartments ealed with individual manholes for inspection and maintenance

## ■ Final Drive (2X2)

- ° A proprietary design using multi- synchronous hydraulic motors on each pontoon
- ° Multiple active motors propelling each pontoon provide superior tracking power, making it virtually undeterred in any terrain

## ■ Sprocket

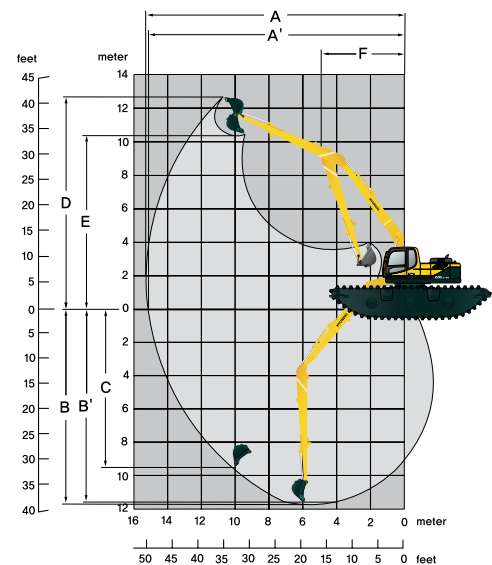
- ° The hardworking sprockets, rollers and bushings (embedded within the rollers) are machine finished to high precision and subsequently induction hardened.

## ■ Track Shoe/Cleat

- ° Steel fabricated and are robotically welded to utmost precision

## ■ Track Chain

- ° Each pontoon comes with 3 strands of heavy duty track chains, constructed with high yield strength tensile steel
- ° Steel track shoe/cleat used has a minimum yield strength and tensile strength of 280 Mpa and 480 Mpa respectively, which translates to an approximately 16% and 65% improvement of yield strength and tensile strength respectively over 6061 T6 aluminium alloy



## ■ Working Ranges

Boom length	8,200mm (26' 11")
Arm length	6,300mm (20' 8")
<b>A</b> Max. digging reach	15,220mm (49' 11")
<b>A'</b> Max. digging reach on ground	14,940mm (588.2")
<b>B</b> Max. digging depth	10,630mm (418.5")
<b>B'</b> Max. digging depth (8' level)	10,520mm (414.2")
<b>C</b> Max. vertical wall digging depth	8,480mm (333.9")
<b>D</b> Max. digging height	13,670mm (538.2")
<b>E</b> Max. dumping height	11,410mm (449.2")
<b>F</b> Min. swing radius	4,870mm (16' 0")

PLEASE CONTACT