



■ Some of the photos may include optional equipment.

HYUNDAI LPG/GASOLINE FORKLIFT TRUCKS **Applied Tier 4 Engine**

25LC/30LC-7S

25GC/30GC-7S



We build a better future

NEW criteria of Forklift Trucks

Hyundai introduces a new line of 7S series
LPG / Gasoline forklift trucks.
Excellent power and performance make your
business more profitable.



OPSS (Operator Presence Sensing System)

Control of mast tilting, lifting and lowering is not possible through operation of the appropriate control when the operator is not in the seated position. (Option)



■ Some of the photos may include optional equipment.

The new master on the job-site!

Smooth running, efficient and ergonomically designed, 25/30L(G)C-7S series are made to meet your needs.

44.9PS/2,400rpm



Powerful Engine MMC 2.4L Engine

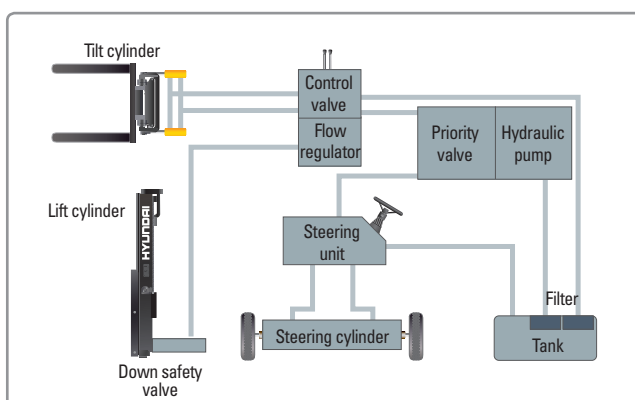
Market approved quality of MMC 2.4L engine ensures incomparable performance, durability and additional value to the machine. Powerful and efficient engine provides excellent fuel consumption and excellent torque improved operator's comfort.
(EPA/CARB Tier-IV Certified)

Fast and Stable Performance

Being able to quickly raise and lower the mast, as well as tilt it forward and backward, provides the best operational conditions during unloading.

When the truck is fully loaded, mast lowering speed is carefully controlled to ensure safety by the down control valve.

Mast(Lift and Tilt) Lock System. (Option)



State-of-the-art Hydraulic System

The latest large-capacity hydraulic system reacts quickly during operation, and a low-noise control valve increases both efficiency and durability.



Fully Hydrostatic Power Steering

A hydraulic steering system always guarantees smooth and flexible steering, preventing overrun and kick-back.



■ Some of the photos may include optional equipment.



Increased Mast Tilting Angle

Utilizing the mast tilting angle of 6 degrees forward and 10 degrees backward, the operator can safely and rapidly perform loading and unloading jobs.

Faster Travel Speed & Better Gradability

The powerful high-output engine provides greater acceleration, better gradability and faster travel speed on any tough terrains or slopes.



Gradability(Loaded)

25LC/25GC-7S : 33.1%

30LC/30GC-7S : 28.2%

Travel Speed(Unloaded)

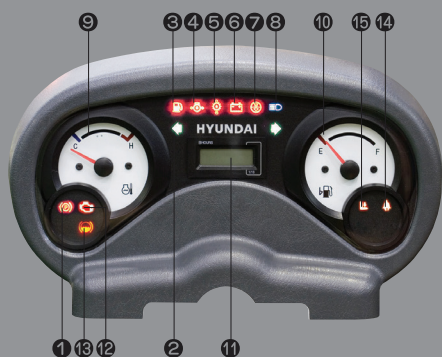
25LC/25GC-7S : 9.8 mph

30LC/30GC-7S : 9.8 mph

Ergonomic operator friendly compartment design!

A design based on human engineering relieves fatigue and increases operator's efficiency.

Operator Friendly Gauges and Water-resistant Monitor Panel



- ① Parking brake lamp
- ② Directional indicators
- ③ Fuel warning lamp
- ④ Engine oil warning lamp
- ⑤ Transmission oil temperature warning lamp

- ⑥ Battery charging warning lamp
- ⑦ Air cleaner filter warning light
- ⑧ Working light indicator
- ⑨ Water temperature gauge
- ⑩ Fuel gauge
- ⑪ Hour meter

- ⑫ Engine check lamp
- ⑬ Brake oil warning lamp
- ⑭ Seat belt warning
- ⑮ OPSS warning



Grammer Seat

- Quick Achievement of the Ergonomically Best Sitting Position
- Asymmetrical Backrest
- Movable Armrests - Seat Heating
- Practical Document Box



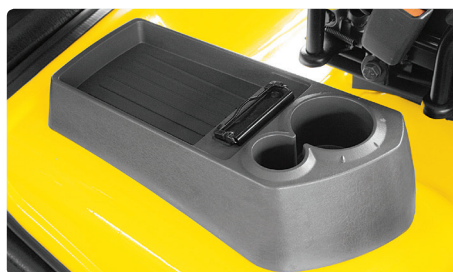
New High Visibility for Safe Operation

The operator is able to work with increased safety and accuracy due to a wider view mast.



Ergonomically Positioned Pedals

Based on human engineering, the accelerator, brake and inching pedals are optimally positioned for convenience while operating the equipment.



Cup Holder & Console Box

Additional storage spaces are located inside the operating space for operator's convenience.



Quick Response of Operating Control Levers (STD)

Only minimal operator's effort is required for precise, safe and productive control.



Adjustable Steering Wheel

Steering wheel with horn button can be adjusted by a lever on the right-hand side for the most comfortable operator position.



Easy and Safe Shift Lever

A single lever on the left side of the steering column gives the operator fast, easy control of direction. The lever must be in the neutral position before the engine can be started.



Multi-Function Switch Lever

Multi-function switch lever gives easy access to lights and turn sign lamp.

Danger-free through high durability!

Safety and durability are priorities in design of the equipment.



Strong Overhead Guard

The safety overhead guard meets ISO 6055 regulation and protects the operator during hazardous jobs.

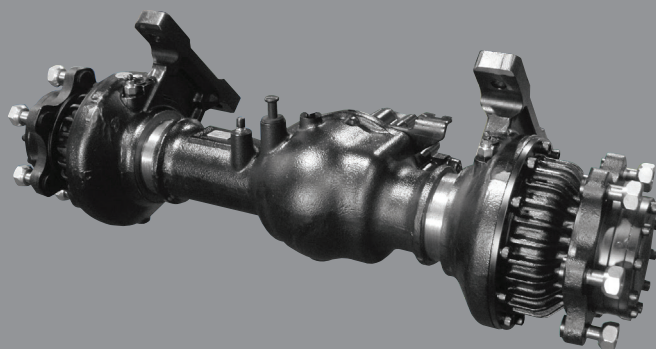


Parking Brake

Ratchet type parking brake requires less effort from the operator to set.

Highly Durable Split Type Drive Axle

The bevel gear set and hub reduction axle smoothly deliver desired torque to the drive wheels.



Large Footboard & Hand Grip & Rear Horn

Wide "open" step offers convenience and safety when entering and exiting truck.



Expansion Bellows

The expansion bellows absorbs vibration and reduces noise generated from the exhaust gas system and also extends the life cycle of exhaust gas system.



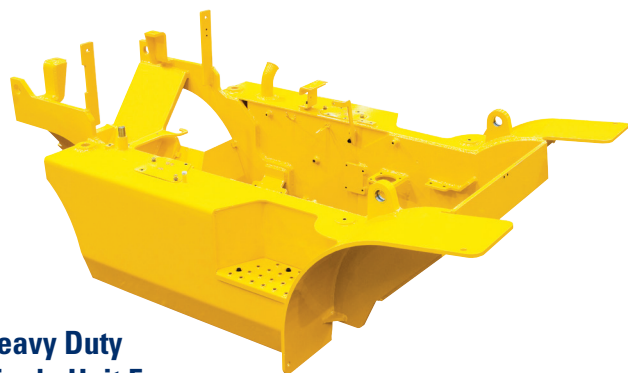
Electrically Monitored Air Filter

Air cleaner sensor alerts the operator of a restricted air filter and allows replacement before damage.





■ Some of the photos may include optional equipment.



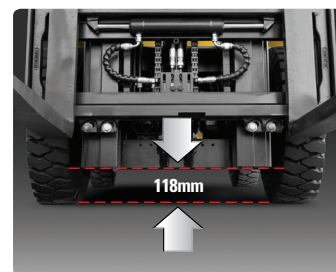
Heavy Duty Single Unit Frame

Heavy duty single unit type frame, designed on the basis of accurate structural analysis, guarantees durability and safety.



Bright, Protected Headlights

Bright, Protected head lights are positioned for exceptional visibility.



Ground Clearance

The engine and transmission are assembled horizontally and positioned high in the frame to protect major components during operation on rugged surface.

Designed for quick and easy service!

An ideal arrangement of component parts ensures easy access and convenience for maintenance.

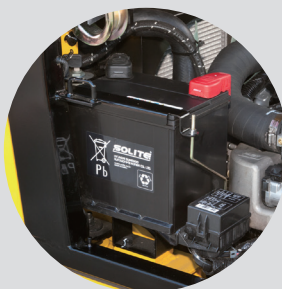


Easy Change Air Cleaner

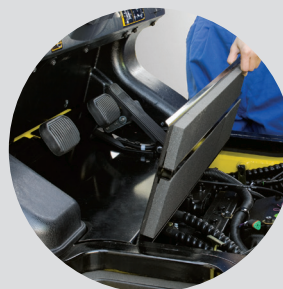
The air filter is readily accessible for cleaning or replacement. (6inch Cyclone Type)



Fast Service Access for Daily Fluids Check



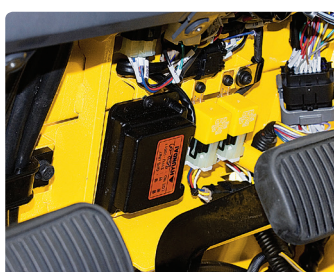
Rotational Battery Installation



One Touch, No Tool Floor Plate



Removable Side Panels for Ease of Service



Improvement in Maintenance of Electric Parts

Various electric parts are centralized in dash board resulting in effortless troubleshooting.



Easy Maintenance Oil Check

The T/M oil level can be checked easily without any disassembly.



Brake Fluid Reservoir with Level Switch

When brake oil level becomes lower than Min. the warning lamp on the cluster lights on.



An Accessible, Compact Fuse Box for Easy Inspection

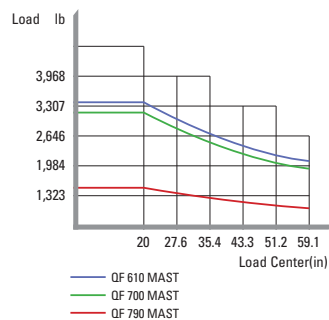
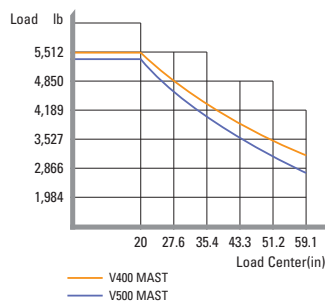
Mast Specification

Mast Type		Maximum Fork Height (in)	Overall Height Lowered (in)	Tilt Angle (deg)		Free Lift (in)				Load Capacity without Integral Side Shift 24 in LC (lb)		Load Capacity with Integral Side Shift 24 in LC (lb)		Truck Weight Unload (lb)	
						With Load Backrest		Without Load Backrest							
				25LC(GC)-7S 30LC(GC)-7S	25LC(GC)-7S 30LC(GC)-7S	Fwd	Bwd	25LC (GC)-7S	30LC (GC)-7S	25LC (GC)-7S	30LC (GC)-7S	25LC (GC)-7S	30LC (GC)-7S	25LC (GC)-7S	30LC (GC)-7S
2-Stage Limited Free Lift	V209	82.5	60.2	10	6	4.5	4.5	4.5	4.5	5,000	6,000	5,000	6,000	8,347	9,190
	V300	118.3	79.2	6	10	4.5	4.5	4.5	4.5	5,000	6,000	5,000	6,000	8,467	9,327
	*V330	130.1	84.1	6	10	4.5	4.5	4.5	4.5	5,000	6,000	5,000	6,000	8,516	9,374
	V350	138.0	88.0	6	10	4.5	4.5	4.5	4.5	5,000	6,000	5,000	6,000	8,547	9,414
	V370	145.9	93.9	6	10	4.5	4.5	4.5	4.5	5,000	6,000	5,000	6,000	8,596	9,466
	V400	157.7	99.8	6	10	4.5	4.5	4.5	4.5	5,000	6,000	5,000	6,000	8,644	9,518
	V430	169.5	105.7	6	10	4.5	4.5	4.5	4.5	5,000	6,000	4,880	6,000	8,745	9,623
	V450	177.4	111.6	6	5	4.5	4.5	4.5	4.5	4,990	6,000	4,770	5,820	8,806	9,687
	V470	185.2	115.6	6	5	4.5	4.5	4.5	4.5	4,940	5,950	4,720	5,650	8,838	9,722
3-Stage Full Free Lift	V500	197.0	121.5	6	5	4.5	4.5	4.5	4.5	4,850	5,860	4,630	5,560	8,886	9,773
	TF370 / TS370	145.9	70.3	6	5	23.8	23.8	46.3	43.9	5,000	6,000	4,870	5,830	8,797	9,686
	TF400 / TS400	157.7	74.2	6	5	27.8	27.8	50.3	47.8	4,960	5,970	4,740	5,670	8,843	9,734
	TF430 / TS430	169.5	78.1	6	5	31.7	31.7	54.2	51.7	4,870	5,840	4,650	5,540	8,890	9,833
	TF450 / TS450	177.4	82.1	6	5	35.6	35.6	58.1	55.7	4,810	5,780	4,590	5,480	8,938	9,844
	TF470 / TS470	185.2	84.1	6	5	37.6	37.6	60.1	57.6	4,740	5,710	4,520	5,410	8,967	9,875
	TF500 / TS500	197.0	88.0	6	5	41.5	41.5	64.1	61.6	4,650	5,600	4,430	5,300	9,020	9,929
	TF550 / TS550	216.7	95.9	6	5	49.4	49.4	71.9	69.4	4,500	5,420	4,280	5,120	9,108	10,027
	TF600 / TS600	236.4	103.7	6	5	57.3	57.3	79.8	77.3	3,270	3,970	3,050	3,670	9,274	10,204
4-Stage Full Free Lift	TF650 / TS650	256.1	111.6	3	3	65.2	65.2	87.7	85.2	2,700	3,280	2,480	2,980	9,363	10,309
	TF700 / TS700	275.8	119.5	3	3	73.0	73.0	95.6	93.1	2,400	2,940	2,180	2,640	9,451	10,397
	QF610	240.7	83.5	3	3	37.0	37.0	59.5	57.0	3,330	3,530	3,110	3,230	9,732	10,511
	QF660	260.4	91.3	3	3	44.9	44.9	67.4	64.9	3,150	3,310	2,930	3,310	9,864	10,643
	QF700	276.2	95.3	3	3	48.8	48.8	71.3	68.9	2,620	2,760	2,400	2,460	9,931	10,710
	QF745	293.9	101.2	3	3	54.7	54.7	77.2	74.8	2,430	2,450	2,210	2,150	10,032	10,811
	QF790	311.6	107.1	3	3	60.6	60.6	83.1	80.7	1,520	1,430	1,300	1,130	10,254	11,033

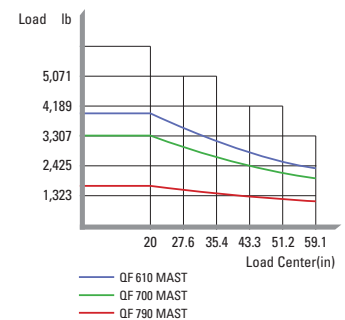
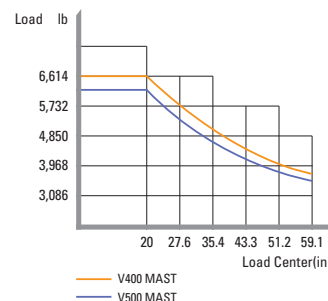
* TS-Mast : Wide Visible 3 Stage Full Free Lift Mast with 2 Free Lift Cylinders.

Load Capacity

25LC(GC)-7S



30LC(GC)-7S



Optional Items

- CABIN & HEATER
- SIDE SHIFT / INTEGRAL SIDE SHIFT
- FORK (L x W x T) (in)

25LC(GC)-7S

35.4 x 4 x 1.8 / 39.4 x 4 x 1.8 / 47.2 x 4 x 1.8

53.1 x 4 x 1.8 / 59 x 4 x 1.8 / 65 x 4 x 1.8 / 70.9 x 4 x 1.8

30LC(GC)-7S

35.4 x 4.8 x 1.8 / 45.3 x 4.8 x 1.8 / 47.2 x 4.8 x 1.8

53.1 x 4.8 x 1.8 / 59 x 4.8 x 1.8 / 65 x 4.8 x 1.8

70.9 x 4.8 x 1.8 / 77.6 x 4.8 x 1.8 / 83.5 x 4.8 x 1.8

90.6 x 4.8 x 1.8 / 94.5 x 4.8 x 1.8

- OVER SHOE(mm) : 51.2, 59, 67, 70.9

- TILTING : 6° / 5°, 3° / 3°, 10° / 6° (Bottler's tilt)

- TIRE : Non-marking

- SEAT : Pocket, Arm Rest, Hip Rest

- LPG CLAMP : Swing Out, Swing Down

- M.C.V : 4-Spool

- ATTACH PIPING : 3 Spool-piping, 4 Spool-piping

- MASTER SWITCH / HAZARD SWITCH

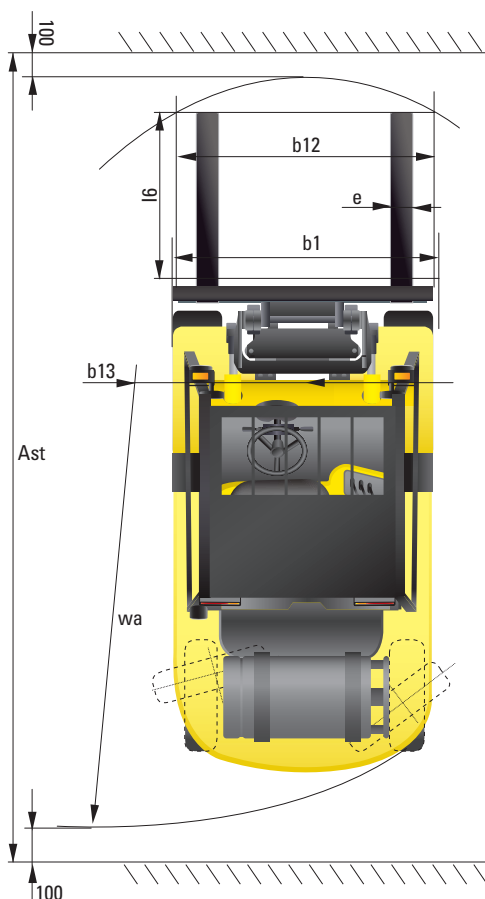
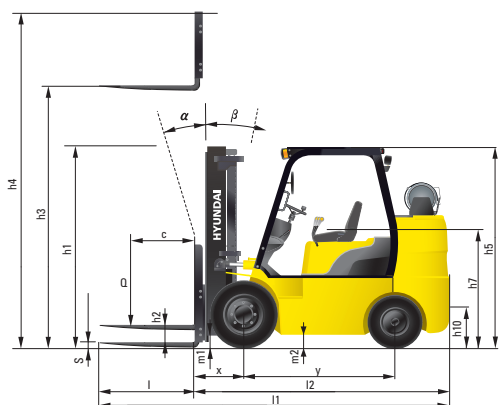
- BEACON LAMP / WORK LAMP

- SPEED CONTROL SENSOR

- LED LIGHT

- KNOB F / R SWITCH (KNOB NEW DESIGN)

Dimension



Specification

Identification			
1.1	Manufacturer	Hyundai	Hyundai
1.2	Manufacturer's type designation	25L(G)C-7S	30L(G)C-7S
1.3	Drive: electric (battery or mains), diesel, petrol, fuel gas, manual	LP / GAS	LP / GAS
1.4	Type of operation: hand, pedestrian, standing, seated, order-picker	seated	seated
1.5	Load capacity / rated load	Q (lb)	5,000
1.6	Load center distance	c (in)	24
1.8	Load distance, center of drive axle to fork	x (in)	18
1.9	Wheelbase	y (in)	55.5
Weights			
2.1	Service weight	lb	8,516
2.2	Axle loading, loaded front/rear	lb	12,196 / 1,647
2.3	Axle loading, unloaded front/rear	lb	3,038 / 5,293
Wheels, Chassis			
3.1	Tires: solid rubber, superplastic, pneumatic, polyurethane	Solid rubber	Solid rubber
3.2	Tires size, front	21 x 7 x 15	21 x 8 x 15
3.3	Tires size, rear	16 x 6 x 10 1/2	16 x 6 x 10 1/2
3.5	Wheels, number front x rear (x = driven wheels)	2 x 2	2 x 2
3.6	Track width, front	b10 (in)	35
3.7	Track width, rear	b11 (in)	35.8
Basic Dimensions			
4.1	Mast / fork carriage tilt forward / backward (α / β)	degrees	6 / 10
4.2	Lowered mast height	h1 (in)	84
4.3	Free lift	h2 (in)	4.5
4.4	Lift height	h3 (in)	130
4.5	Extended mast height	h4 (in)	176.6
4.7	Overhead Guard (cab) height	h5 (in)	82.5
4.8	Seat height / standing height	h7 (in)	43.7
4.12	Coupling height	h10 (in)	11.1
4.19	Overall length	l1 (in)	132.5
4.20	Length to face of forks	l2 (in)	91.1
4.21	Overall width	b1 (in)	41.9
4.22	Fork dimensions	s / e / l (in)	1.8 x 4 x 41.3
4.23	Fork carriage ISO 2328, class / type A, B	II / A	III / A
4.24	Fork-carriage width	b12 (in)	40.2
4.31	Ground clearance, loaded, under mast	m1 (in)	3.5
4.32	Ground clearance, centre of wheelbase	m2 (in)	6.7
4.33	Aisle width for pallets 1000 x 1200 crossways	Ast (in)	146
4.34	Aisle width for pallets 800 x 1200 lengthways	Ast (in)	153.9
4.35	Turning radius	Wa (in)	81.9
4.36	Smallest pivot point distance	b13 (in)	23.4
Performance Data			
5.1	Travel speed, Unloaded	mph	9.8
5.2	Lift speed, Loaded/Unloaded	fpm	118.1 / 120.1
5.3	Lowering speed, Loaded/Unloaded	fpm	98.4 / 88.6
5.5	Drawbar pull, Loaded	lb	4,916
5.7	Gradient performance, Loaded/Unloaded	%	33.1 / 20.2
5.10	Service brake		Foot
Engine			
6.1	Engine manufacturer / type	MMC 2.4L	MMC 2.4L
6.2	Engine power acc. to ISO 1585	PS	44.9
6.3	Rated speed	1/min	2,400
6.4	No. of cylinder / cubic capacity	/cm³	4 / 2,350
Other Details			
8.2	Type of drive control	Power Shift	Power Shift
8.3	Operating pressure	bar	216 / 162
8.4	Attach oil volume (Max)	ℓ / min	56
8.5	Noise	db(A)	80

HYUNDAI FORKLIFT HEAVY INDUSTRIES

Head Office (Sales Office)
18th Fl., Digital Cube Bldg. 34, Sangamsan-ro, Mapo-gu, Seoul 121-904
TEL (82) 2-6424-1515 / FAX (82) 2-6424-1540

Americas Operation : Hyundai Construction Equipment Americas, Inc.
6100 ATLANTIC BOULEVARD NORCROSS GA 30071 U.S.A
TEL (1) 847-678-823-7802 / FAX (1) 847-678-823-7778

Europe Operation : Hyundai Heavy Industries Europe N.V.
VOSSENDAAL 11, 2440 GEEL, BELGIUM
TEL (32) 14-56-2200 / FAX (32) 14-59-3405



PLEASE CONTACT

www.hyundai-ce.com

2015. 11 Rev.1