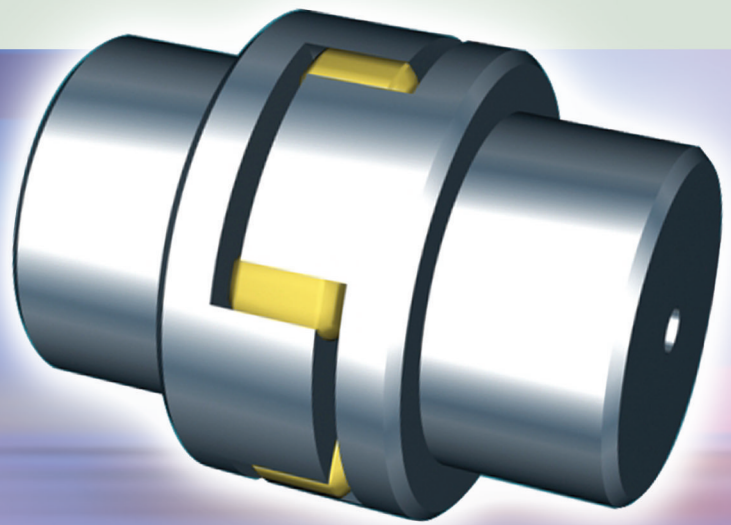


# JAW FLEXIBLE COUPLING



# JAW COUPLING

## ■ 특성 / Distinctive Features

1. 확실한 동력전달을 위해 신축비틀림 이음으로 디자인되어 있기 때문에 운전중 소음·진동·충격을 완화·감소시켜 줍니다.
2. 중앙카프링의 모든 사이즈는 Urethane elastomer의 최대 장점인 강하면서도 뛰어난 신축성과 반발 탄성에 의해 Urethane spider부분은 비틀림각이 최대 5°가 될때까지 압축하중에 견딜 수 있습니다.

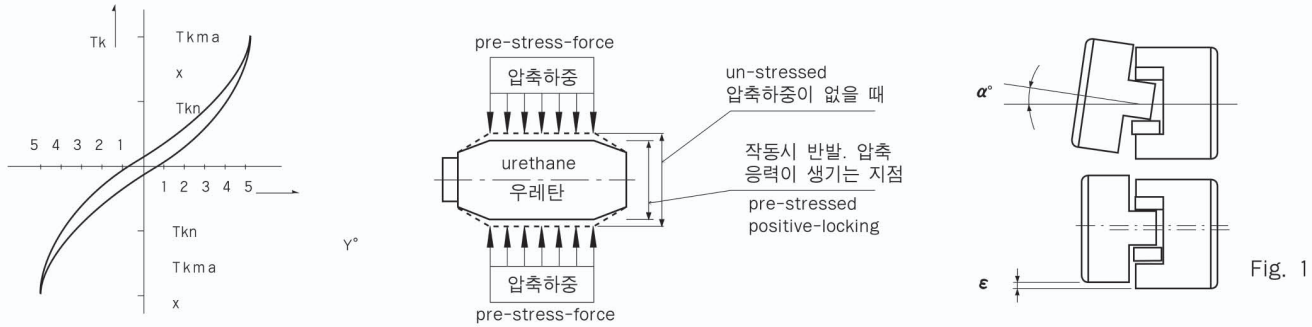
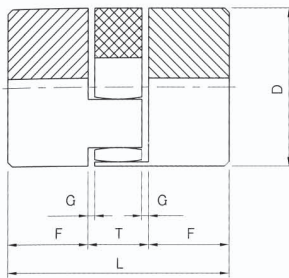
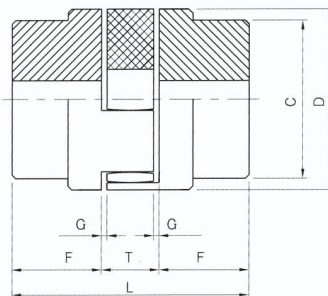


table 1.

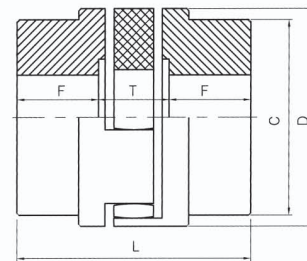
Size No.	050	070	090	0010	0020	2035-A	2035	3545	4560	6070	7080	8090
Angular misalignment(α°)	0.15	0.2		0.4		0.8		1.0				1.4
Parallel misalignment(εmm)	1.3											



Only CR050~CR090



Only CR0010~CR3545

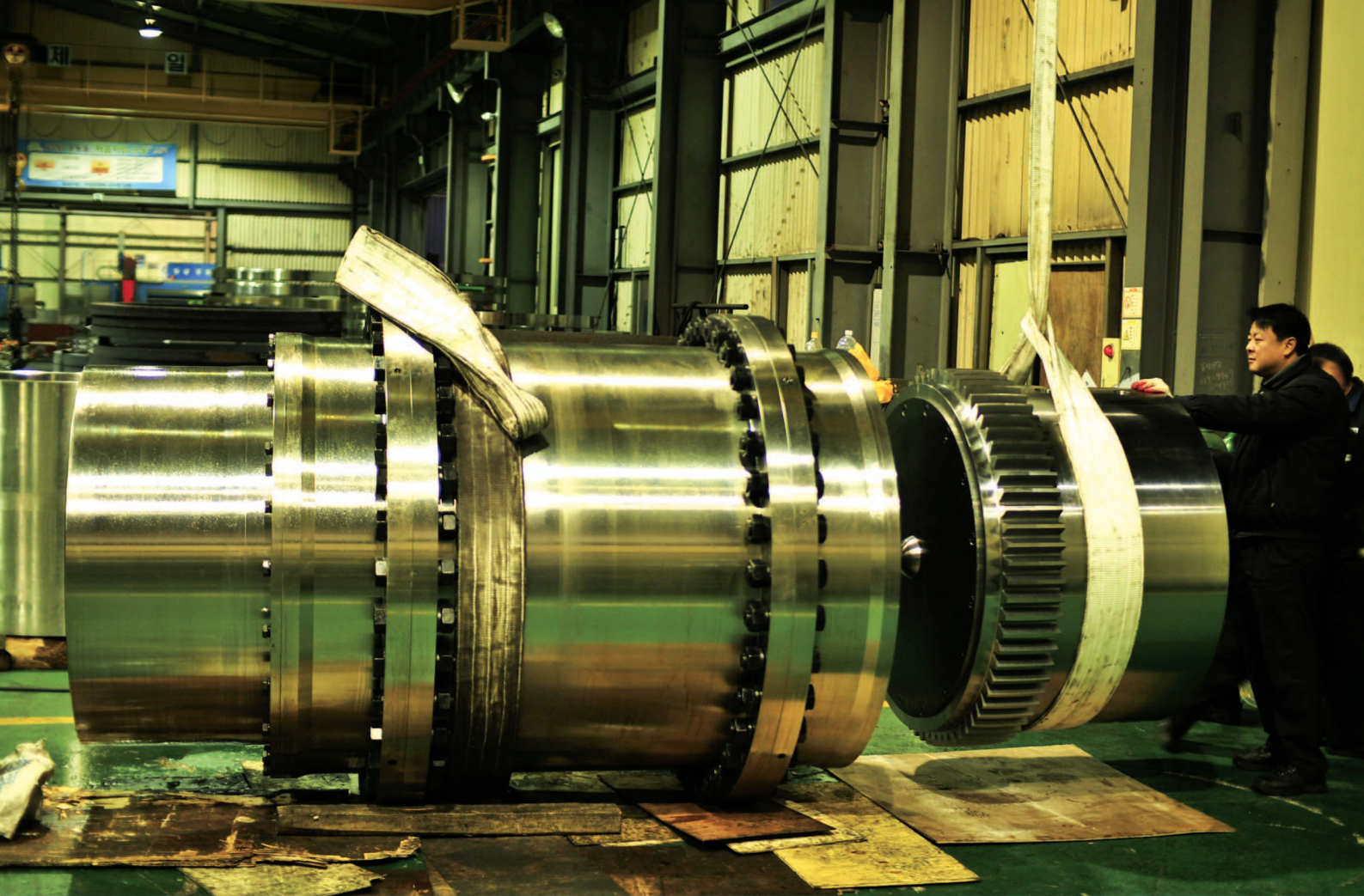


Only CR4560~CR90100

## ■ 표준품 규격 및 전동능력 / Dimensions & technical Data

Size	Bore Dia(mm)		Basic Torque (kgf · m)	Torsion angle	Dimensions(mm)						WEIGHT (kg)
	min	max			C	D	F	T	L	G	
CR 050	5	11	0.4	3.2°	-	25	12	11	35	1	0.08
CR 070	7	14	1		-	35	18.5	13	50	1.5	0.3
CR 090	7	22	1		-	40	25	16	66	2	0.5
CR 0010	11	19	2.5		42	48	24	17	65	1.5	0.5
CR 0020	14	24	3.4		50	58	27	18	72	1.5	0.9
CR 2035-A	19	28	12		58	68	35	20	90	1.5	1.3
CR 2035	19	38	32		68	78	35	22	92	1.5	2.5
CR 3545	28	45	65		88	98	38.5	29	106	4	4.4
CR 4560	38	60	90		98	118	45	30	120	3	7.8
CR 6070	42	75	125		115	135	46	33	125	3.5	10
CR 7080	65	100	293		130	160	66	45	177	5	19.5
CR 8090	65	110	520		150	200	105	45	255	5	36
CR 90100	65	110	790		180	230	110	50	270	6	39





 **Jac coupling**

HOME PAGE [http : // www.jacoup.co.kr](http://www.jacoup.co.kr)  
E-mail : [jac@jacoup.co.kr](mailto:jac@jacoup.co.kr)