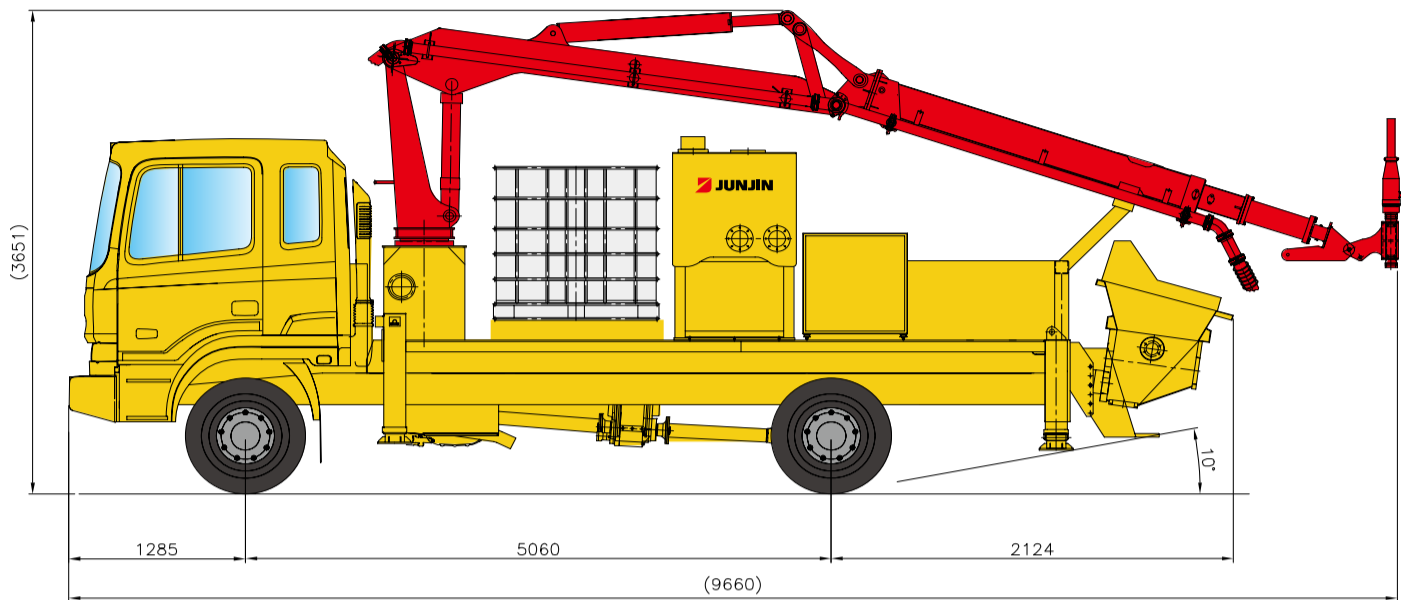


# SHOTCRETE | JNTS-1404 |

## DATA SHEET



### TECHNICAL SPECIFICATION

#### PUMP SPECIFICATION

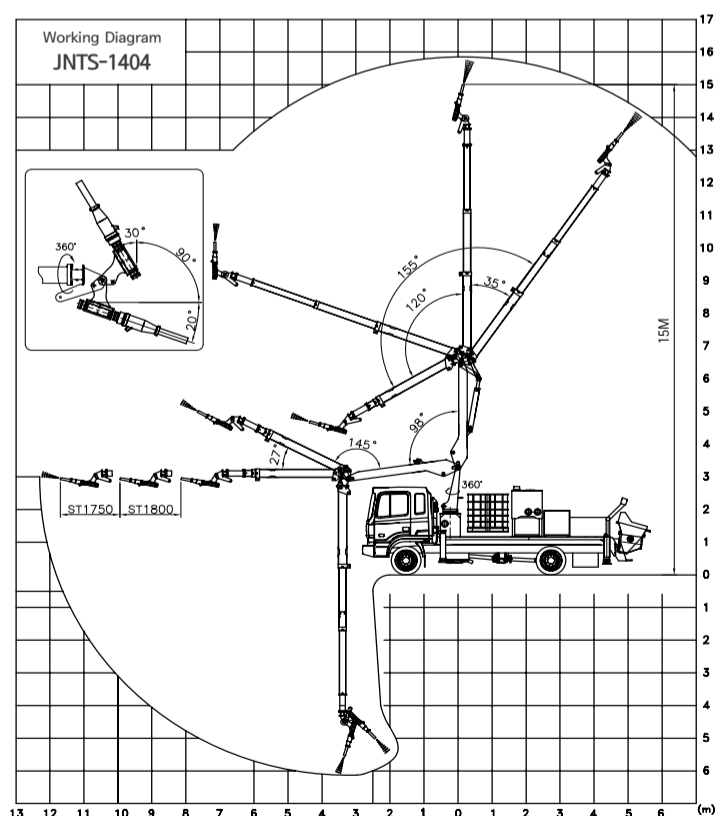
Output	35m <sup>3</sup> /h
Pressure	108 bar
Delivery Cylinder	150mm(6")
Delivery Cylinder Type	Hard chromed
Stroke length	1,000mm(39")
S-Valve	S1412 (5.5"-4.7")
System Pressure	300 bar
Grease System	Automatic
Switching Type	Hydraulic
Hopper Capacity	400L
Additive Tank	2,000L(1,000 x 2)
Additive Output (m <sup>3</sup> /h)	0~45 Liter/min
Number of stroke per minute	33
Output control Range	6(8) ~ 35 m <sup>3</sup> /h

#### BOOM SPECIFICATION

Vertical Height	15.0m
Horizontal Reach	11.7m
Swing Angle	360°
First section boom Angle	98°
Second section boom Angle	155°
Boom Telescopic length	1,800mm + 1,750mm

#### GENERAL SPECIFICATION

Wireless Remote Control	Standard
Wired Remote Control	Standard
Vibrators	Option
Water Pump Pressure	20 bar
Water tank Capacity	400L



\* All technical data are theoretical values and Specification are subject to change without prior notice.  
 \* www.junjin.com