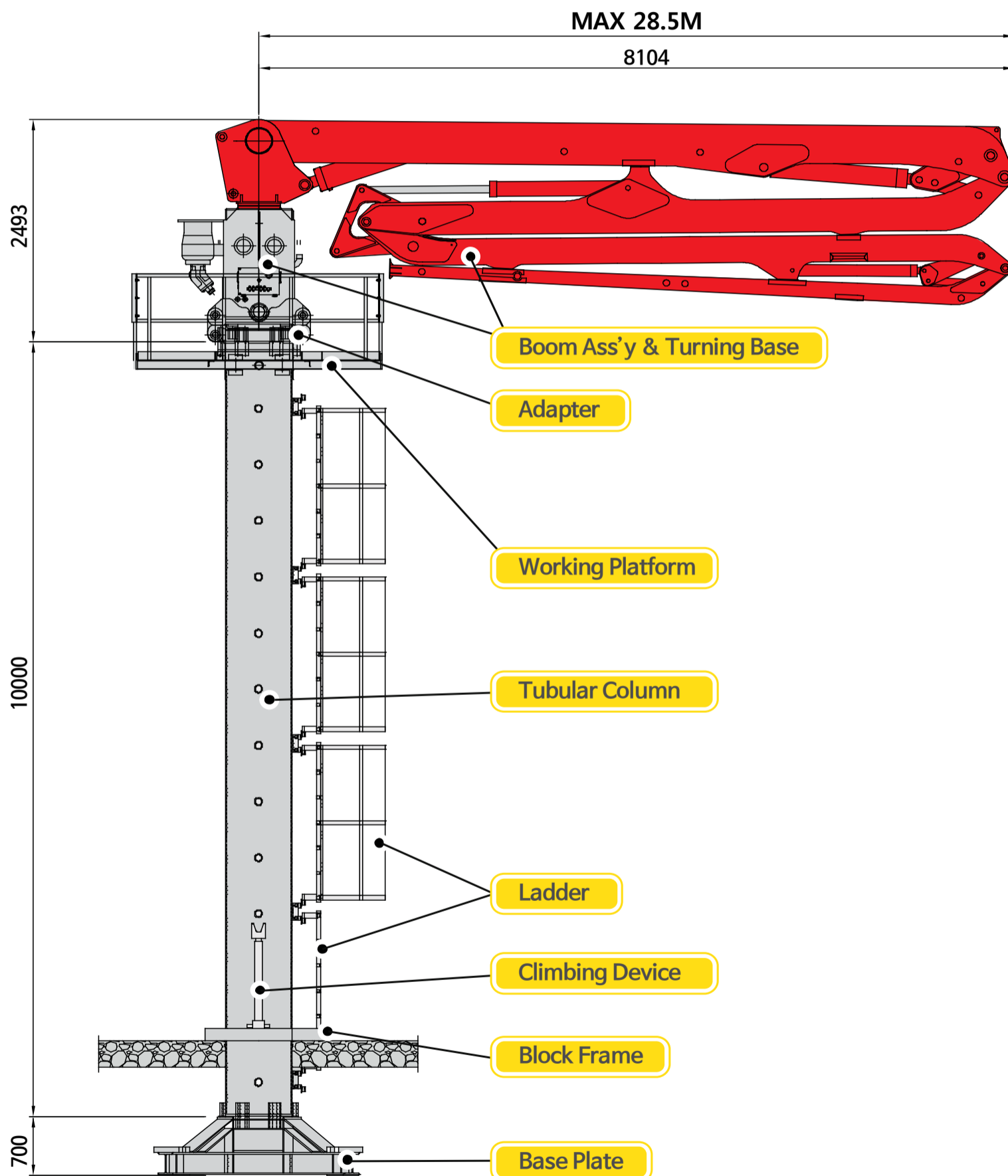


JB-Z29H

DATA SHEET PLACING BOOM



Placing System on 4 Sections Z TYPE Designed Boom



JB-Z29H

DATA SHEET

PLACING BOOM



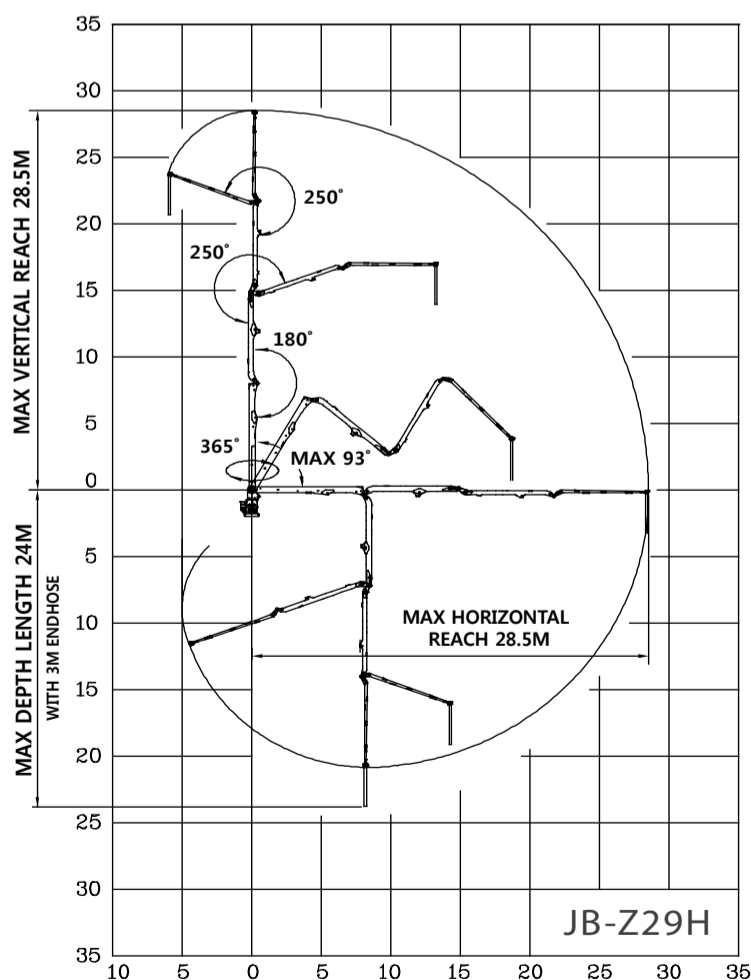
Placing System on 4 Sections Z TYPE Designed Boom

Boom Specification / Technical Specification

SPECIFICATION		
Boom Design	Z TYPE	
Horizontal Reach	28.5m	
Vertical Reach	28.5m	
Reach Depth	24m	
Boom Length	1st Section	8m
	2nd Section	6.9m
	3rd Section	6.8m
	4th Section	6.8m
End Hose Length	3.0m	

SPECIFICATION		
Boom Articulation	1st Section	-3°~90°
	2nd Section	180°
	3rd Section	250°
	4th Section	250°
Rotation	365°	
Delivery Line	DN 125mm(5")	
Electric System	AC380V / 60Hz	
Control Systems	Radio-Cable-Manual	
Electric Motor	15KW	

WORKING DIAGRAM



* All technical data are theoretical values and Specification are subject to change without prior notice.
 * www.junjin.com

JB-Z29H

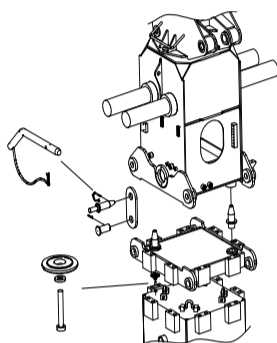
DATA SHEET PLACING BOOM



Placing System on 4 Sections Z TYPE Designed Boom

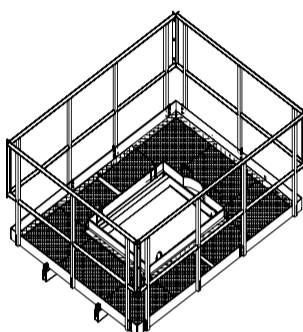
Standard delivery Scope

► Turning Base & Adapter



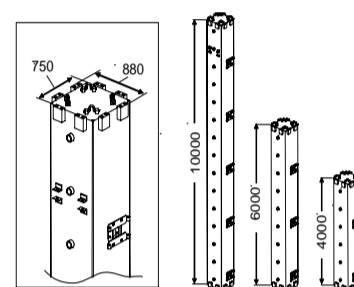
- Turing Base:1Set
- Adapter:1Set

► Working Platform



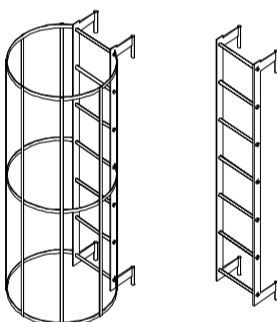
- Safety platform : 1Set

► Tubular Column



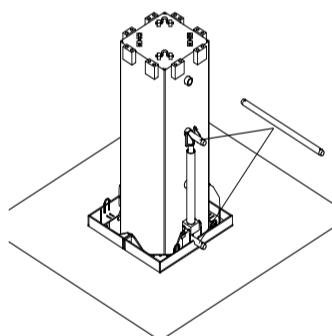
- 10m Tubular Column:2EA
- 4m,6m Tubular Column:options

► Ladder



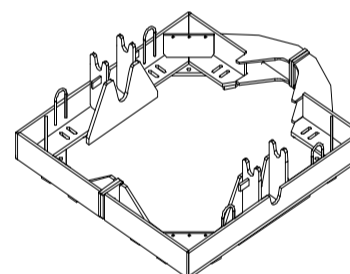
- Ladder with rear protection:3EA
- Ladder without protection:1EA

► Climbing Device



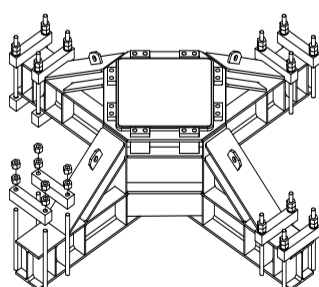
- Climbing Device:1Set

► Block Frame



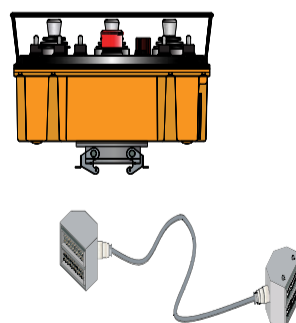
- Block Frame:3EA

► Base Frame



- Base Frame:1EA

► Remote Control



- Cable Remote Control:1Set
- Wireless remote control(option)

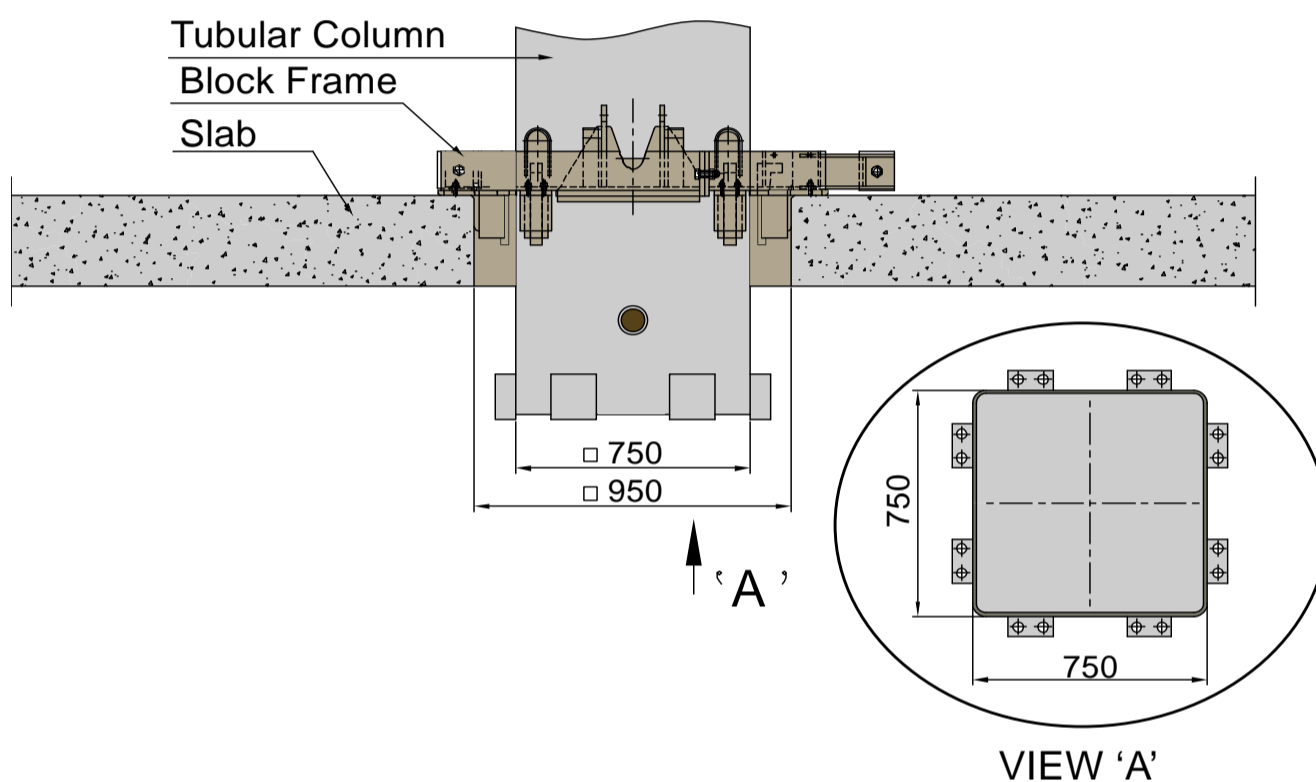
JB-Z29H

DATA SHEET

PLACING BOOM

Placing System on 4 Sections Z TYPE Designed Boom

How to support on Slab



Slab Open Hole Size

