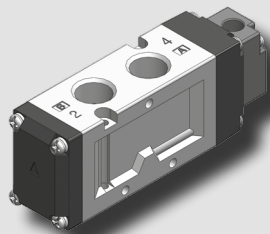
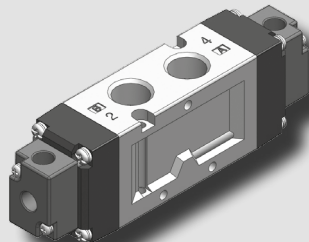


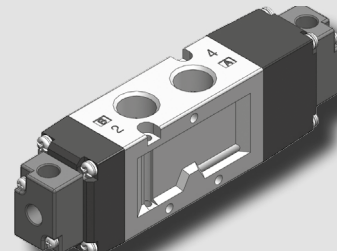
## KA(B)V530 series



KA(B)V530S



KA(B)V530D



KA(B)V530H

### How to Order

K A V  530 S

①                      ②                      ③

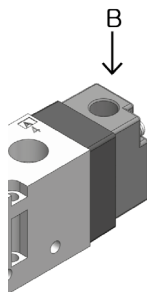
#### ① Air supply direction

A	Horizontal
B	Vertical

#### ② Port type

Nil	Rc(PT)
G	G

#### ③ Function



Function		Symbol
S	Single acting	
D	Double acting	
H	Closed center	
I	Pressure center	
J	Exhaust center	

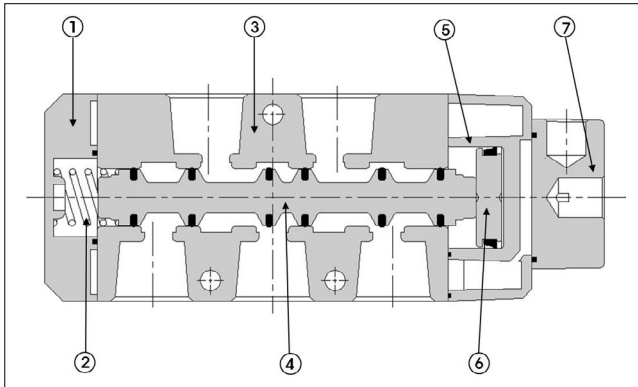
### Specifications

Type	S	D	H / I / J
Fluid	Air, Inert gas		
Port size	Rc(PT) 3/8, G 3/8		
External pilot port size	Rc(PT) 1/8		
Effective sectional area Smm <sup>2</sup> (Cv)	45mm <sup>2</sup> (2.5)	38mm <sup>2</sup> (2.1)	
Operating pressure	1.5~9kgf/cm <sup>2</sup> (0.15~0.9MPa)	2~9kgf/cm <sup>2</sup> (0.2~0.9MPa)	
Pilot pressure	2~10kgf/cm <sup>2</sup> (0.2~1MPa)		
Max. operating frequency	5 cycle/sec	3 cycle/sec	
Ambient & fluid temperature	5℃ ~ 60℃		
Weight	310g	380g	420g

### Features

- Excellent durability with its non-lubricated type.
- Large capacity valve, suitable for large actuator.
- Fast response with its low pressure pilot.
- Easy to install when horizontal type(KAV) or vertical type(KBV) is selected according to installation direction.

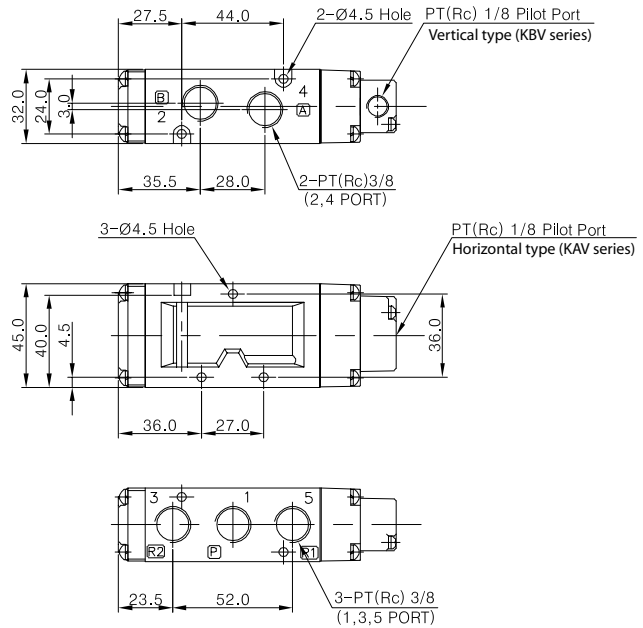
## Structure



Part no.	Parts	Material
1	Cover	Plastic Resin
2	Spool Spring	SUS
3	Body	AL D/C
4	Spool Ass'y	AL & Others
5	Pilot	Plastic Resin
6	Piston	Plastic Resin
7	Adapter Plate	Metal

## Dimensions

### 2 Position Single Pilot KA(B)V 530S



Pneumatic  
Solenoid  
Valve

KS3135

KS4000

KSP3135

KSP4000

KT307  
KMF307

KT317

KA(B)V105

KA(B)V210

KA(B)V320

KA(B)V530

KA(B)V640

KA(B)V524

KA(B)V534

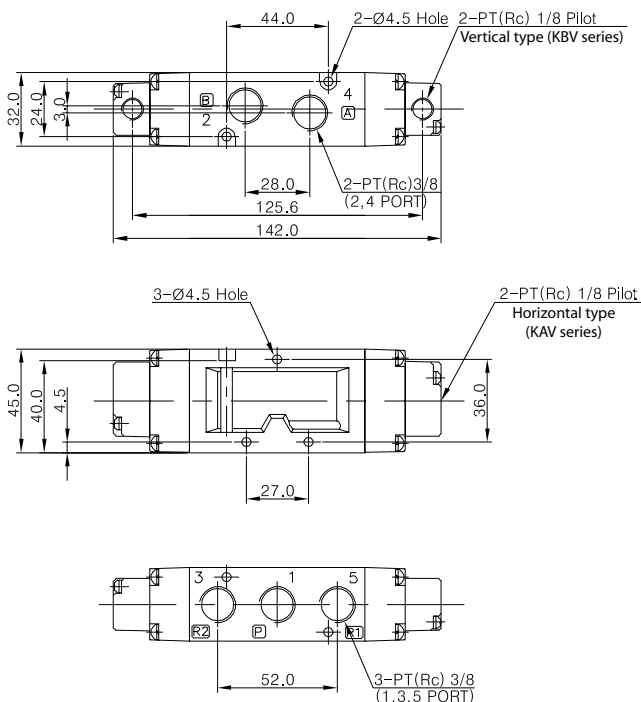
KA(B)V341

KA(B)V342

KPA(B)542

## Dimensions

### 2 Position Double Pilot KA(B)V 530D



### 3Position Double(H,I,J) Pilot KA(B)V 530H(I, J)

