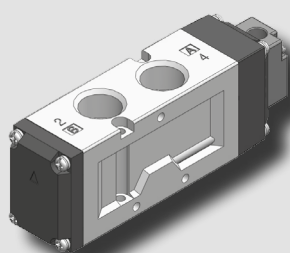
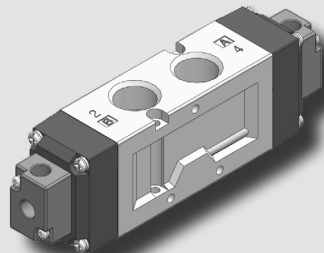


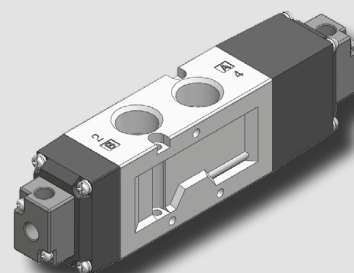
KA(B)V640 series



KA(B)V640S



KA(B)V640D



KA(B)V640H

How to Order

K A V 640 S

①

②

③

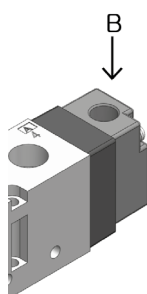
① Air supply direction

A	Horizontal
B	Vertical

② Port type

Nil	Rc(PT) (Standard)
G	G

③ Function



Function		Symbol
S	Single acting	
D	Double acting	
H	Closed center	
I	Pressure center	
J	Exhaust center	

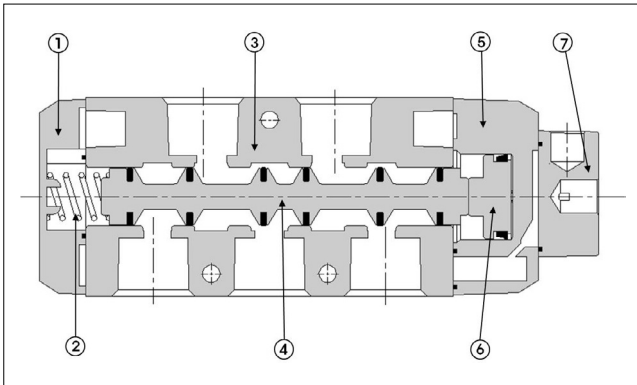
Specifications

Type	S	D	H / I / J
Fluid	Air, Inert gas		
Port size	Rc(PT) 1/2, G 1/2		
External pilot port size	Rc(PT) 1/8		
Effective sectional area Smm ² (Cv)	65mm ² (3.6)		50mm ² (2.8)
Operating pressure	1.5~9kgf/cm ² (0.15~0.9MPa)		2~9kgf/cm ² (0.2~0.9MPa)
Pilot pressure	2~10kgf/cm ² (0.2~1MPa)		
Max. operating frequency	5 cycle/sec		3 cycle/sec
Ambient & fluid temperature	5℃ ~60℃		
Weight	440g	510g	750g

Features

- Excellent durability with its non-lubricated type.
- Large capacity valve, suitable for large actuator.
- Fast response with its low pressure pilot.
- Easy to install when horizontal type(KAV) or vertical type(KBV) is selected according to installation direction.

Structure



Part no.	Parts	Material
1	Cover	Plastic Resin
2	Spool Spring	SUS
3	Body	AL D/C
4	Spool Ass'y	AL & Others
5	Pilot	Plastic Resin
6	Piston	Plastic Resin
7	Adapter Plate	Metal

Pneumatic
Solenoid
Valve

KS3135

KS4000

KSP3135

KSP4000

KT307
KMF307

KT317

KA(B)V105

KA(B)V210

KA(B)V320

KA(B)V530

KA(B)V640

KA(B)V524

KA(B)V534

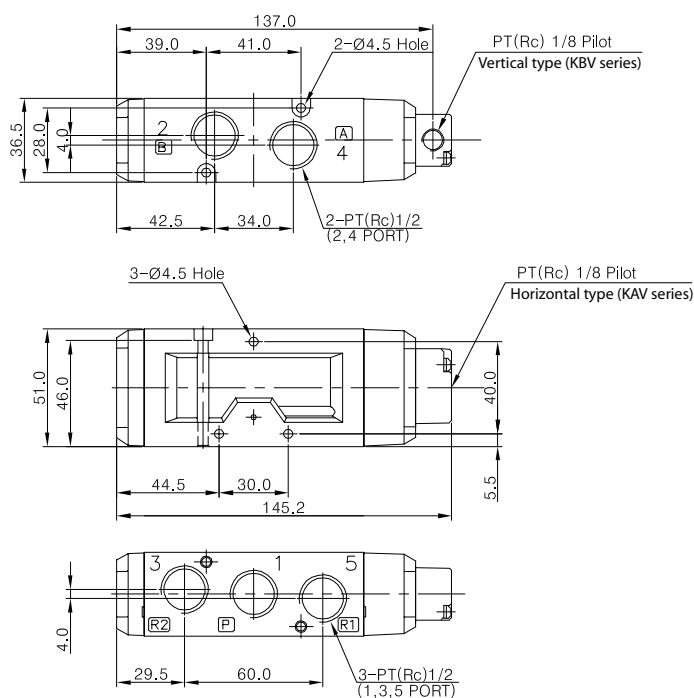
KA(B)V341

KA(B)V342

KPA(B)542

Dimensions

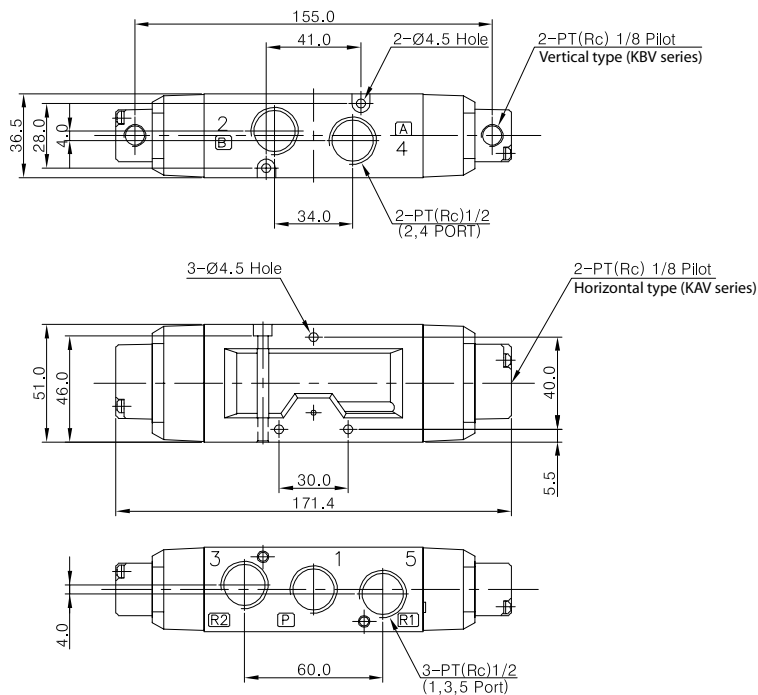
2 Position Single Pilot
KA(B)V 640S



Dimensions

2 Position Double Pilot

KA(B)V 640D



Dimensions

2 Position Double(H,I,J) Pilot

KA(B)V 640H(I,J,K)

