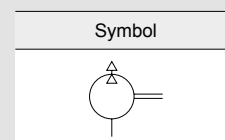


## SVO series



SVO 060



### How to Order

SVO 060 - B C -

①                      ②                      ③                      ④                      ⑤

① Series

SVO	Oil circulated (Without exhaust filter)
-----	--

② Displacement

060	60 l/min
100	100 l/min

③ Motor voltage

Single-phase	
A	110/220V
B	220V
C	110V

④ Motor hertz (Hz)

A	60
B	50
C	50/60

⑤ Arrival pressure

Nil	Standard (Refer specification table)
B	2mbar
C	20mbar

### Specifications

			SVO060	SVO100
Displacement	50Hz	l/min	50	85
	60Hz		60	100
Max. pressure		mbar	2	
Rated voltage 3-phase	50Hz	V	-	
	60Hz			
Rated voltage Single-phase	50Hz	V	110/220	
	60Hz			
Motor rated output 3-phase		kW	-	
Motor rated output Single-phase		kW	0.2	0.25
Motor revolution	50Hz	min <sup>-1</sup>	1420	
	60Hz		1700	
Noise		dB(A)	50	52
Max. vapor allowance		mbar	-	
Vapor volume		l/h	-	
Operating temperature (Ambient)		°C	40	
Oil volume		l	0.1	
Weight	50Hz	kg	12	13
	60Hz			

### Features

- **Reliability:** High quality material, quality control according to ISO9001, CE, mark authentication standard, automated machining facility, computer control process etc. Guarantee standardized and accurate product manufacturing. Where operation of vacuum pump stops during vacuum work in direct coupling operation method of flange type. Check valve is installed at the suction hole in order to prevent reverse-flow.

Environmentally safe: Air cooling, internal oil recirculation, installed special oil sump for oil mist separator, low vibration and low noise level allows this pump to be used in any environment.

- **Easy to service:** Compact design, air-cooling and easy maintenance without oil mist separator and can be using long periods. When needed change the oil, do not need to change the other consumption parts.

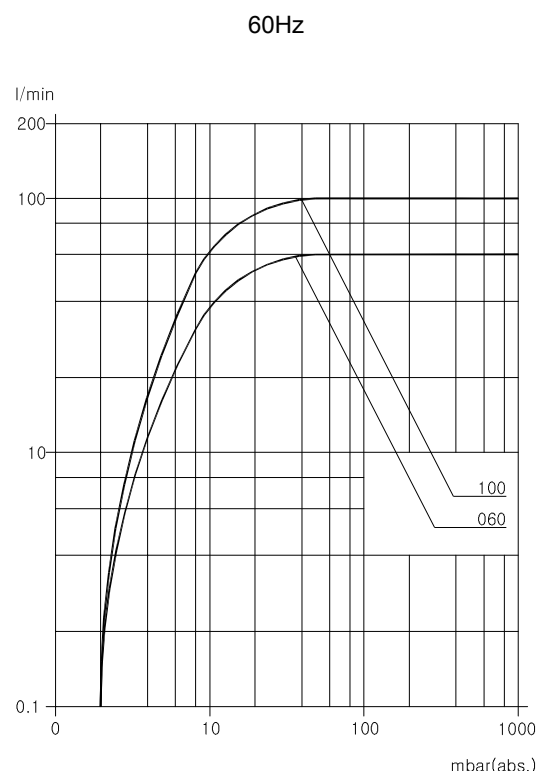
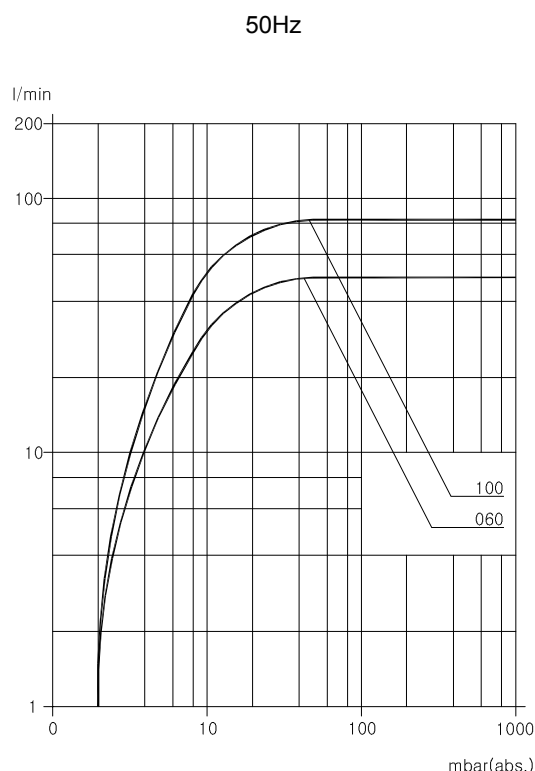
- **Miniaturization:** This is simple type that spindle of flange motor connect pump rotor & cylinder directly and cooling type used with cooling fan. This pump is small size and lightweight.

- **Applications:** Packing machine, printing machine, medical instrument and vacuum adhesion move, etc.

## Operation Principle

This vacuum pump is oil-circulated rotary vane type, which comprises rotor, vane and cylinder. Rotor and cylinder center are assembled eccentrically, and 2 vanes rotate by centrifugal force in pushed state to the inside wall of cylinder. At this time, cell takes place between vane and vane, happen to the vacuum whose volume change sucks, expanse, compresses and discharges. Uses oil for lubrication of rotary part and maintenance of vacuum so that stable and reliable vacuum may be obtained in order to be used for various applications. The oil lubrication and sealing is consistently supplied to cylinder without separate oil pump through pressure such as suction difference and so on, and then is discharged to oil sump with air. When through the exhaust filter, oil mists clearing and discharges clean air so that can using in any environment.

## Pressure & Flow Characteristics



### Vacuum Equipment

#### Reference Data

DSA1  
DSA2

DSA3  
DSB1

DSB2  
DSB3

DSU  
DSC

DSD

DSG

DS

DMF

DMU

DMB

KSV

CF

MVO

**SVO**

MOT

SML

DWV

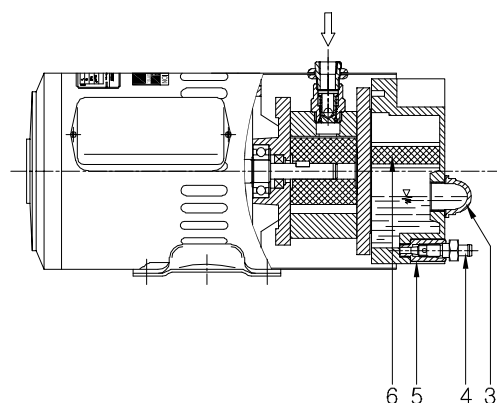
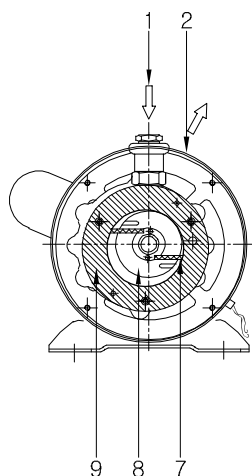
ENT

DEN  
SYSDEN

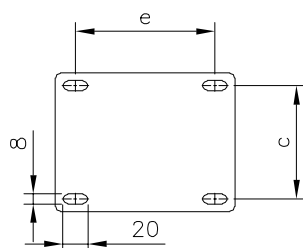
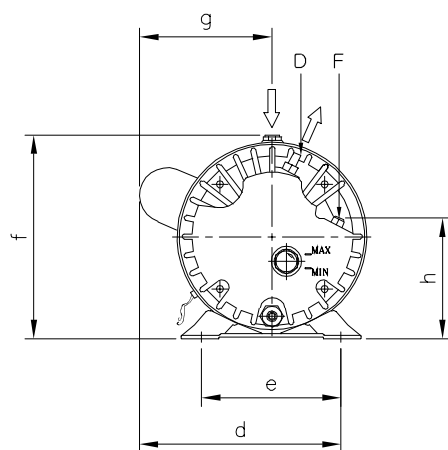
S

## Structure- SVO100

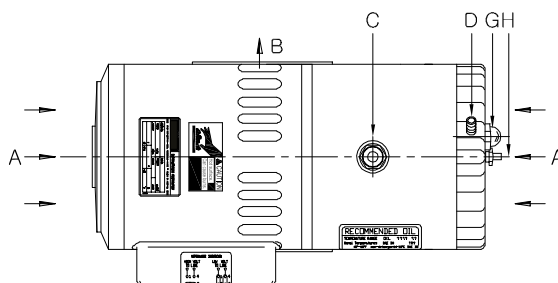
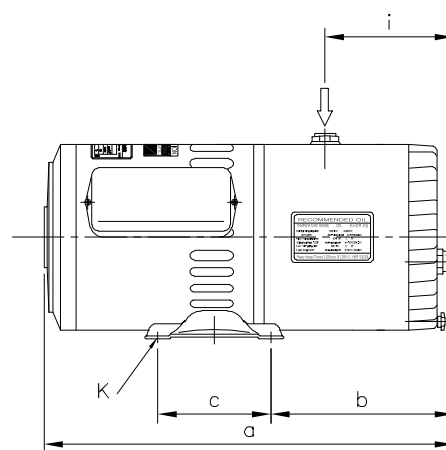
Part no	Parts
1	Inlet port
2	Exhaust port
3	Oil sight glass
4	Oil drain plug
5	Oil sump
6	Demister
7	Vane
8	Rotor
9	Cylinder



## Dimensions- SVO060-AC, SVO100-AC



Part no	Parts	Remarks
A	Cooling air entry	-
B	Cooling air exit	-
C	Inlet port	Rc(PT)1/4"
D	Exhaust port	Ø8 hose nipple
F	Oil filling plug	-
G	Oil sight glass	-
H	Oil drain plug	-
K	Pump base	-



Model	a	b	c	d	e	f	g	h	i
SVO060-AC	323	99	90	176	110	153	105	92	92
SVO100-AC	336	112							95