

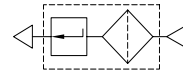
KVSC series



Feature

- Is used on one vacuum source where many vacuum pads are applied.
- A devices which can maintain vacuum condition even when workpieces breakaway or fallen from vacuum pad.
- Applicable to workpieces in non-uniform placement.
- Can be installed on the piping between vacuum source and pad.

Symbol



How to Order

KVSC - **M5** **03** - **H**

① ② ③ ④

① Series

KVSC	Vacuum safety valve
------	---------------------

② Nozzle diameter

M5	M5xP0.8	03	Ø0.3
M6	M6xP1.0	05	Ø0.5
G1/8	G 1/8	06	Ø0.6
M10	M10xP1.25		

③ Orifice

④ Body

H	Hex body
C	Circular body
HS	Hex body with fine thread (Only available for M10 port size)
CS	Circular body with fine thread (Only available for M10 port size)

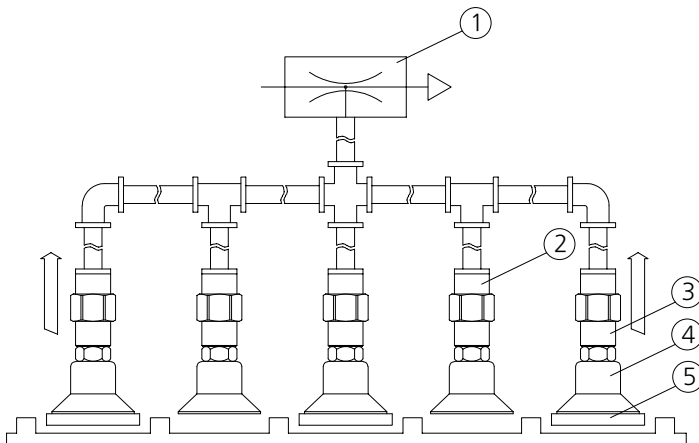
Specifications

Fluid	Air
Temperature	-10 ~ 60 °C
Working pressure	-95 ~ 0kPa(-713 ~ 0mmHg)
Mounting method	Screw type

Type	M5-03	M6-05	G1/8-06	M10-06
Pressure drop before adsorption (-kPa)	2	7	11	11
Applicable vacuum pad (mm)	≤Ø15	Ø20~Ø50	Ø20~Ø100	Ø60~Ø100

* Circular body type can be internally installed in DSC and DSG series vacuum holder.

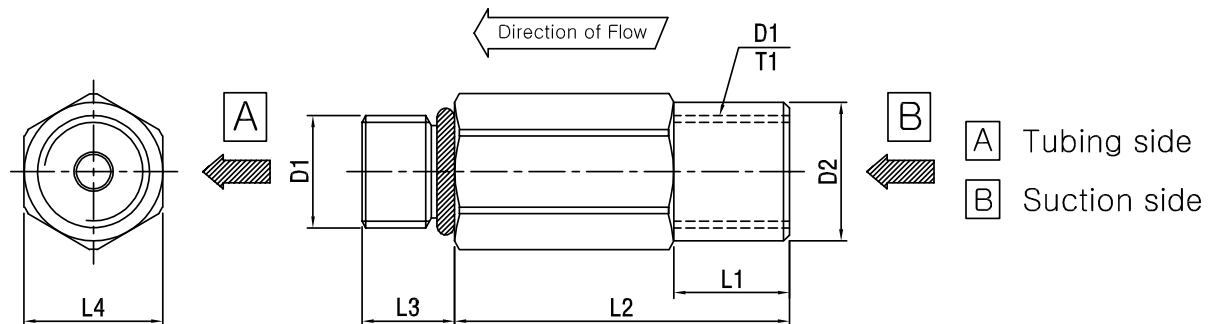
Application



- If a workpiece drops from vacuum pad, safety valve will minimise the loss caused by intake air by blocking the inflow, as the loss might lead to the dropping of other workpiece.
- When the adsorption of a workpiece, valve will open an flow path for inflow air to maintain vacuum rapidly.

Part no.	Parts
①	Vacuum ejector
②	Pad holder
③	Vacuum safety valve
④	Vacuum pad
⑤	Workpiece

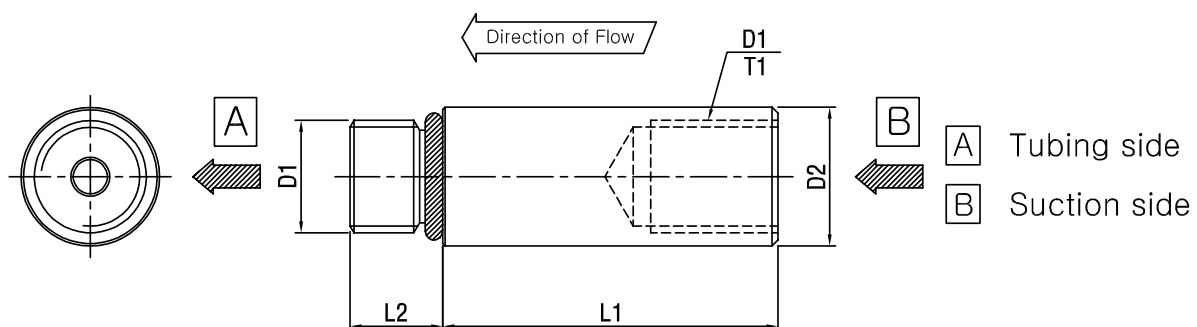
Dimensions-Hex Body



Unit: mm

Model	D1	D2	L1	L2	L3	L4(SW.)	T1(DP.)
KVSC-M5-03-H	M5xP0.8	Ø7.0	5.0	10.5	5.0	8.0	6.0
KVSC-M6-05-H	M6xP1.0	Ø9.0	5.0	12.0	6.0	9.0	7.0
KVSC-G1/8-06-H	G 1/8	Ø12.0	10.0	29.0	8.0	12.0	11.0
KVSC-M10-06-H	M10xP1.5	Ø14	10.0	29.0	8.0	14.0	10.0
KVSC-M10-06-HS	M10xP1.25	Ø14	10.0	29.0	8.0	14.0	10.0

Dimensions-Circular Body



Unit: mm

Model	D1	D2	L1	L2	T1(DP.)
KVSC-M5-03-C	M5xP0.8	Ø7.0	10.5	5.0	6.0
KVSC-M6-05-C	M6xP1.0	Ø9.0	12.0	6.0	7.0
KVSC-G1/8-06-C	G 1/8	Ø12.0	29.0	8.0	11.0
KVSC-M10-06-C	M10xP1.5	Ø14	29.0	8.0	10.0
KVSC-M10-06-CS	M10xP1.25	Ø14	29.0	8.0	10.0