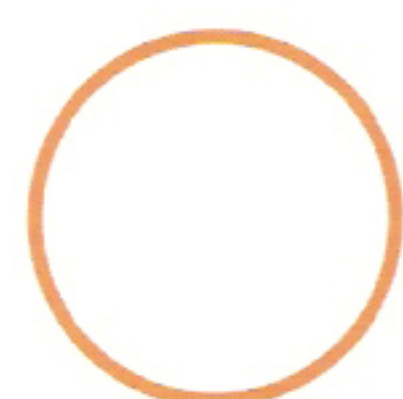
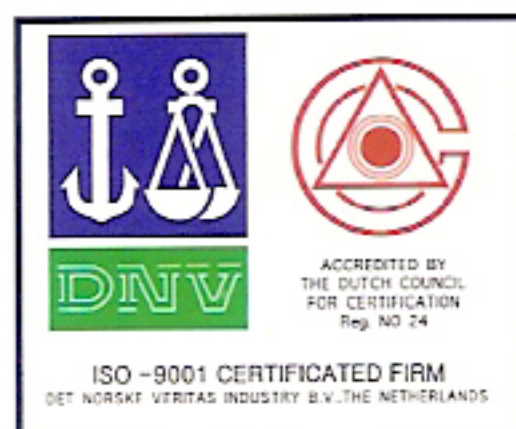
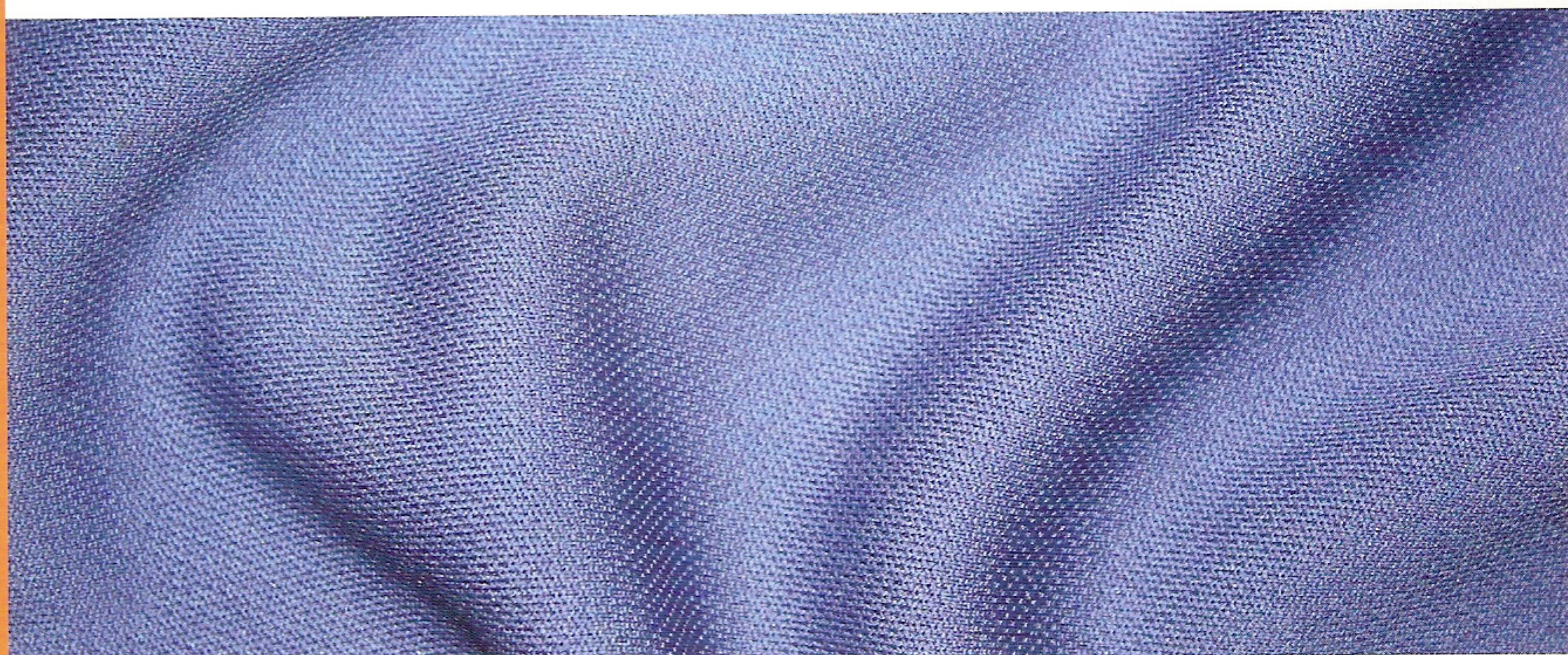


TJPKNIT®



KILM-72AV/84AV/108V

*Double Knit Interlock
Knitting Machine*



KEUMYONG

www.keumyong.com

KILM-72V, KILM-72AV

High speed multi-purpose double knit machine with a wide range of stitch and top quality finish. All of these furnish high production and easy pattern changing.

DIAMETER	GAUGE(N.P.I.)	FEEDS	SPEED(R.P.M)
• 30"	18-32	72F	30-35
34"	18-32	72F/82F	27-30

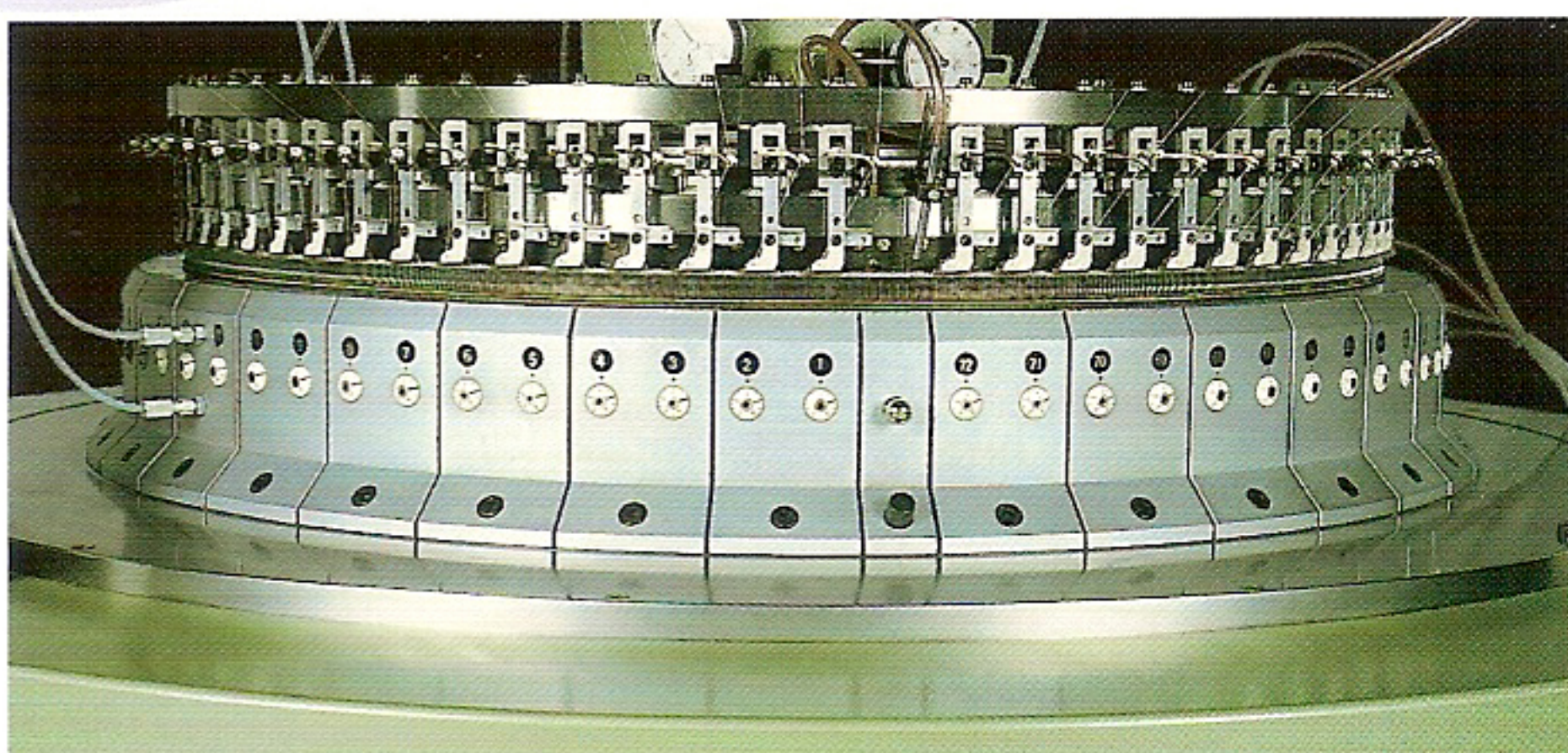
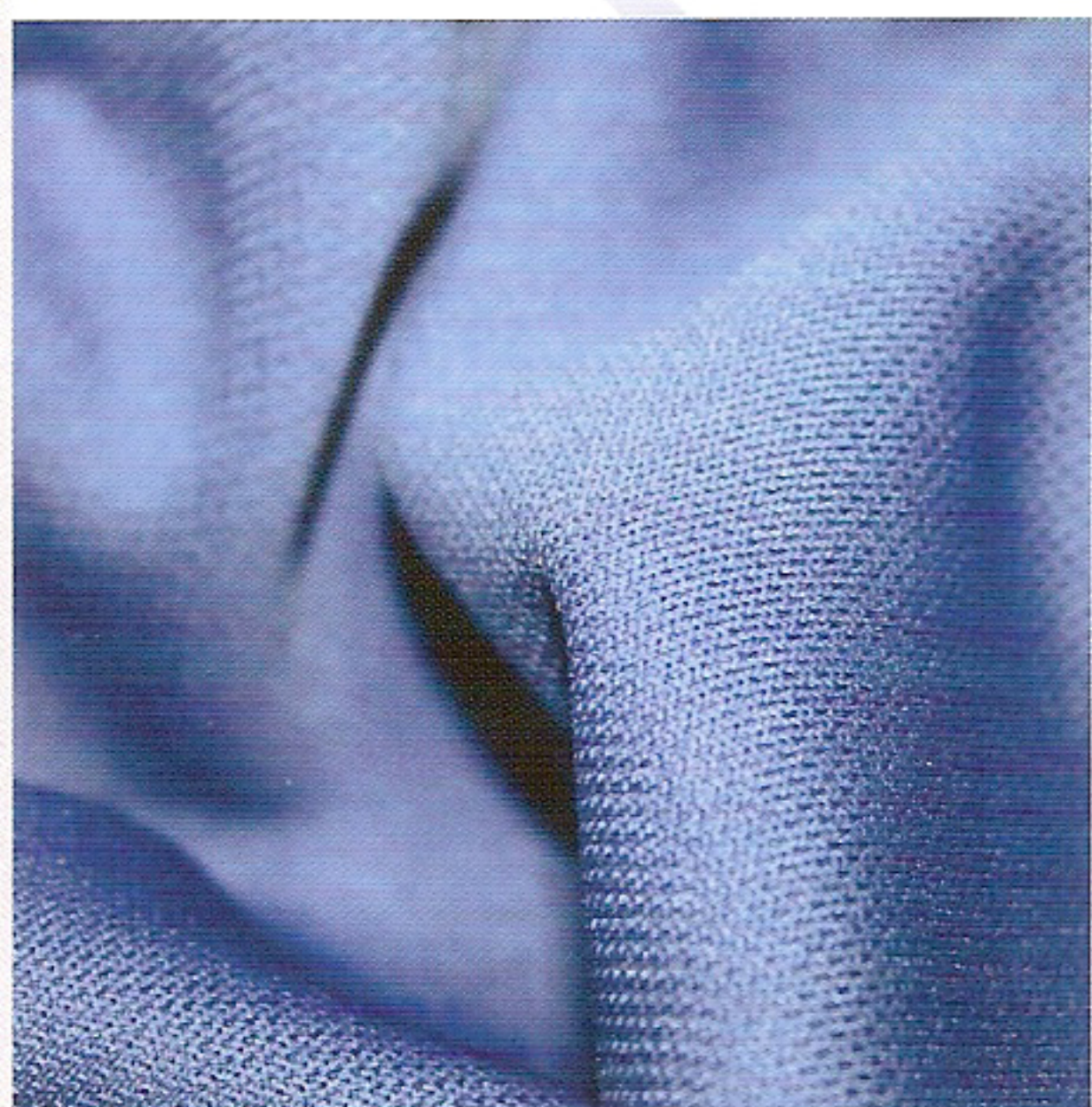
* KILM-72V : 2 track cylinder, 2 track dial cams.

* KILM-72AV : 4 track cylinder, 2 track dial cams.

FABRIC POTENTIAL

KILM-72V : Interlock, Double single pique, Mock Rodier, Milano Rib, Ponte de Roma, Reversible plaiting

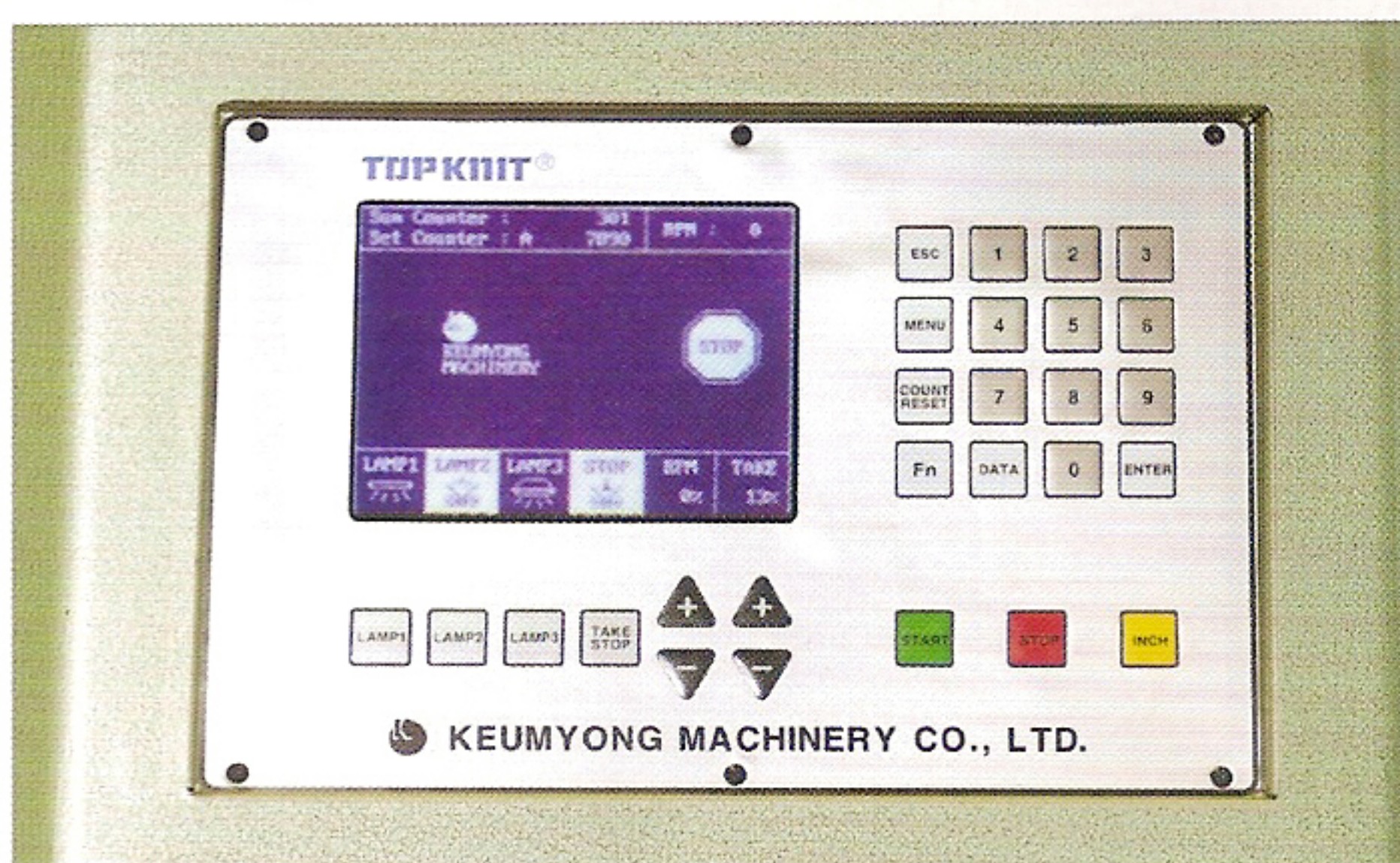
KILM-72AV : Single pique, Interlock, Eightlock, Swiss pique, French pique, Milano Rib, Ponte di roma, Lacoste, and Flat back rib.



MODEL: KILM-72AV

KILM-AV SERIES (Eight-Lock machine)

Interlock circular knitting machine with up to multi-feeders per diametrical inch for the production of normal-size and body-size yard good from 12 inch to 22 inch in diameter.



INTEGRATED CONTROLLER

- * Fully integrated driving control mode with character and graphic.
 - * Self-diagnosis and alarm function.
 - * Auto take-down tension and speed control system.
- Easy setting method and bar-graphic digital indicating for all functions.

KILM-84V, KILM-84AV

High production multi-purpose in rib or interlock knitting machine with the widest stitch range and top quality finish.

DIAMETER	GAUGE(N.P.I)	FEEDS	SPEED(R.P.M)
• 30"	18-32	84F	30-35
33"	18-32	84F	27-30

*KILM-84V : 2 track cylinder, 2 track dial cams.

*KILM-84AV : 4 track cylinder, 2 track dial cams.

*Delayed timing is standard. To change from delayed to synchronized timing, there is no need to exchange the yarn carriers and cams.

STANDARD SPECIFICATIONS

*Cylinder diameter, needles per inch, number of feeds as described above, so please order the machine according to requirements.

*AC motor with inverter control unit.

CYLINDER DIAMETER	12"-28"	30"-38"
AC MOTOR	3.75kw	5.5kw

*Dial and cylinder needle detectors.

*Positive yarn feeding device.

*Tube-side creel with double tie.

*Venti-Cleaner.

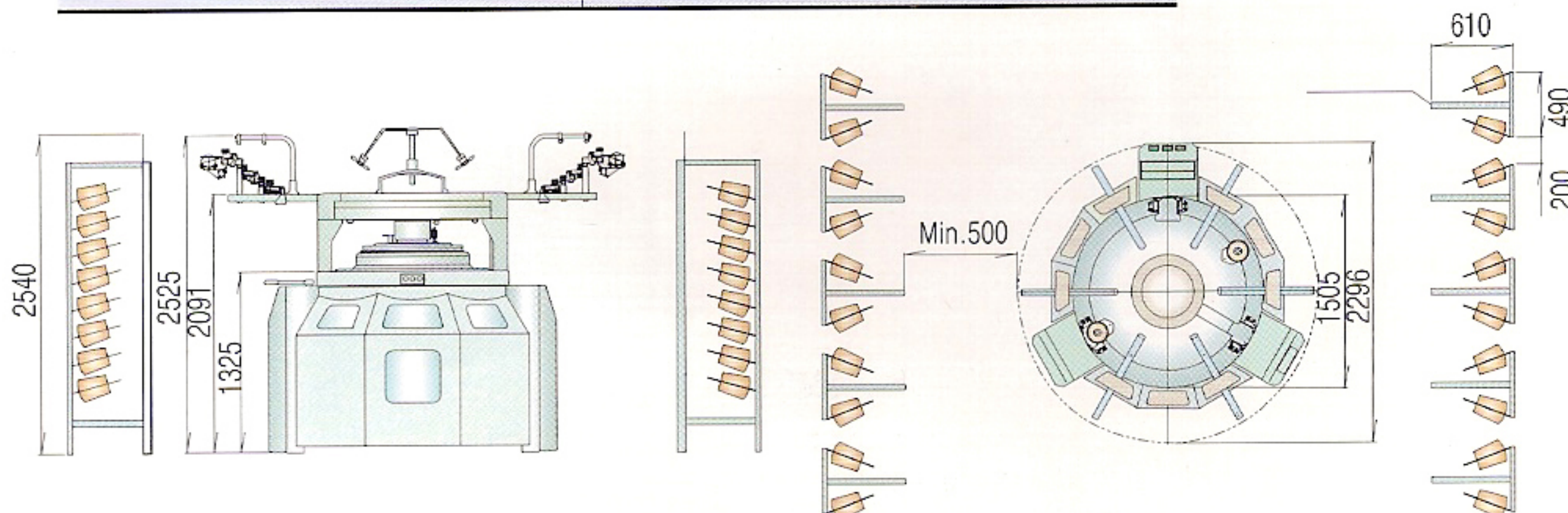
*Oil mist lubricator for needle and cams with dust blower.

*Spreader size ring system.

*Speed of machine is depending upon yarn used, knitting condition, gauge etc, the machine speed can be either increased or decreased. The speed figures on this table are given only as guide.

PACKING DIMENSIONS

KILM - 84AV	30" DIAMETER
Approx.Net weight	2.800Kg
Approx.Gross weight	3.000Kg
Case size(mm)	Length Width Height 2390×2250×2300



MODEL: KILM-84AV / 30"