

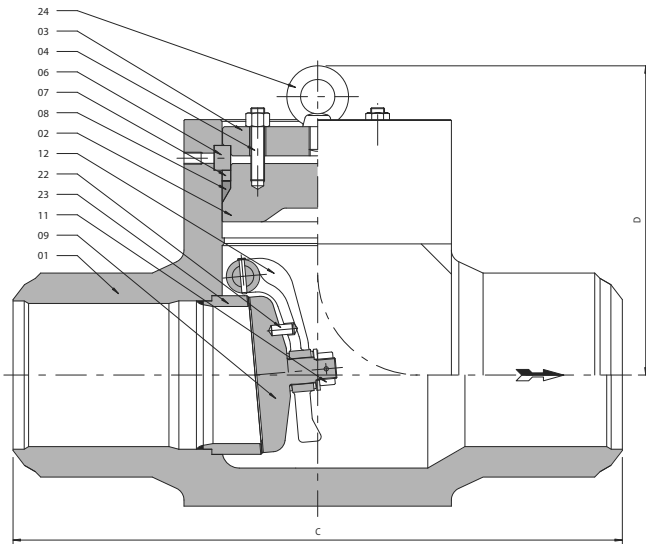
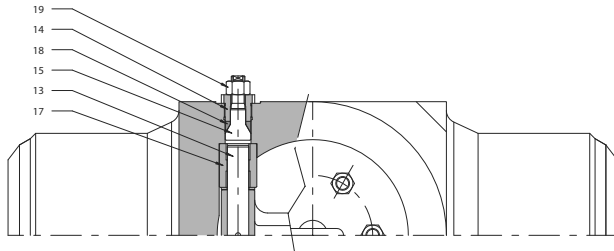
FORGED STEEL CHECK VALVES, PRESSURE SEAL BONNET – FIG KPP

MAKE KEY VALVE TECHNOLOGIES LTD.
 ASME CLASS 1500 / 2500 (3500 & 4500 ALSO AVAILABLE)
 EN CLASS PN250 - PN500 (B760)



STANDARDS

DESIGN	ASME B16.34 - EN 12516 - (BS 1868) - API 6D
BUTTWELDING ENDS	ASME B16.25 - EN 12627 - DIN-EN 9692-1
END-TO-END / FACE-TO-FACE DIM	ASME B16.10 - EN 12982 / EN 558-2
PRESSURE TESTING	ASME B16.34 - EN 12266 - API 598



MATERIALS

01 BODY	(S)A105N (SEE BELOW)
02 BONNET	(S)A105N
03 COVER	A105
04 BONNET BOLTING	A193-B7 / A194-2H
06 SEGMENTAL RING	13CR
07 THRUST RING	13CR
08 GASKET	GRAPHITE/S.S.
09 DISC	A105 + STELLITE
11 DISC NUT	A276 410
12 HINGE	A216 WCB
13 HINGE PIN	A276 410
14 RETAINER	A276 410
15 BONNET	A105
17 HINGE PIN BEARING	13CR + STELLITE
18 HINGE PIN GASKET	GRAPHITE
19 NUT	A194 2H
22 PIN	A276 410
23 SEAT RING	A105 + STELLITE
24 LIFT EYE BOLT	CARBON STEEL

FEATURES

DESIGN	CONSTRUCTION ALTERNATIVES OPTIONS ACCESSORIES	SWING CHECK VALVE WITH PRESSURE SEAL BONNET TILTING DISC OR SPRING ASSISTED PISTON TYPE CHECK VALVES AUXILIARY CONNECTIONS WEIGHT AND DASHPOT (OTHERS ON REQUEST)
MATERIALS	BODY / BONNET EN MATERIALS	(S)A105N - (S)A182-F11 - (S)A182-F22 - (S)A182-F91 - (S)A182-F92 (OTHERS ON REQUEST) 1.0460 - 13CrMo4.5 - 10CrMo9.10 - 1.4903 - 1.4901

MAIN DIMENSIONS IN MM

CLASS	1500				2500			
	NOM. SIZE	C	D	Cv	KG	C	D	Cv
6" (150)	559	352	820	228	610	332	620	280
8" (200)	711	378	1350	360	762	342	1080	430
10" (250)	864	454	2400	560	914	398	1720	610
12" (300)	991	522	3300	960	1041	444	2410	1040
14" (350)	1067	576	4080	1220	1118	495	2900	1480
16" (400)	1194	648	5320	1480	1219	580	3760	1720
18" (450)	1537	706	6740	1810	1346	692	4500	2220
20" (500)	1664	778	8420	2310	1448	750	5700	2680
24" (600)	1943	820	10500	2940				

Key Valve Technologies Ltd.

Phone: +82 31 363 0700, Fax: +82 31 496 0752

Website: www.keyvalve.com