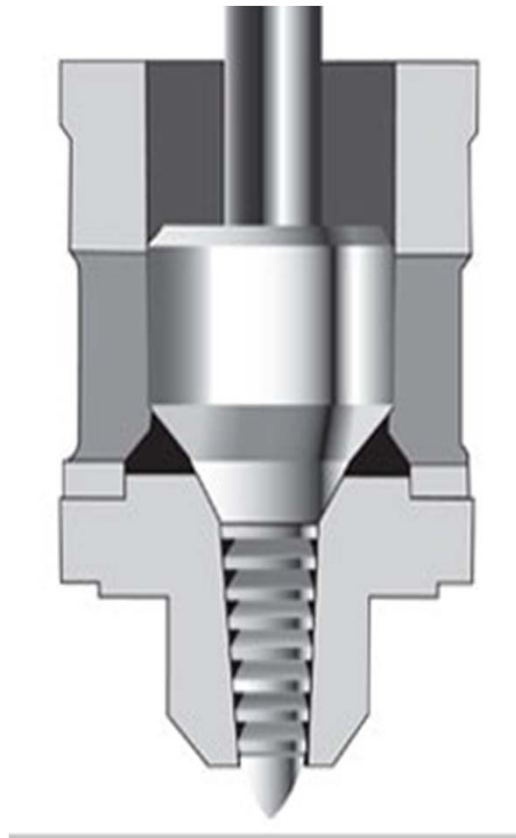


# KVT control valve trim model HSC-III



Trim Type	HSC-III (Micro Flow Scale)
Valve Design	Straight, Angle
Service Function	Low-Flow, High $\Delta P$ , Cavitating Erosion Protection near Seat
Trim Sizes, mm	#A, B, C, 1~11 sizes
<b>Cv Range</b>	<b>0.20 ~ 10.0</b>
Flow Direction	Under
WEB Seal Type	Quick Change
Leakage Class	IV or V
Flow Characteristic	Unique
<b>Cavitation Index Range</b>	<b>1.22</b>
Balance of Trim	Unbalanced
Rangeability	200:1, max.
Typical Applications	Desuperheater Cooling Water Control, Steam PRV Soot blower Thermal Drain, Fuel Oil Control Reheat and Superheat Spray Fluid
Features	<ul style="list-style-type: none"> <li>• Anti-cavitation design trim for high <math>\Delta P</math> in low flow service condition.</li> <li>• Typical stepped pressure drop control trim(in pressure profile).</li> <li>• Recommend that the trim do not use in excessive flow for long running service condition.</li> <li>• Do not apply on flashing service condition.</li> <li>• Carefully select the trim(shapes) according to flow direction.</li> <li>• Valve Body Size Range : upto DN40(1.5")</li> </ul>