



BE10 Process Industrial Pressure Gauge

OUTLINE

This is pressure gauge of the construction which introduction elastic deformation of bourdon tube (movement) into pointer.

The handling is easy, because construction is simple. It is possible to measure wide pressure range, and it is used in a wide field.

FEATURES

- By using sealed cas, it can be used even in the rain or dew condition. (Equivalent to JIS C 0920, Drip-proof, Type II)
- This pressure gauge is provided with wider pressure measuring ranges. When anticorrosion is required, we are pleased to comply with such requirements.

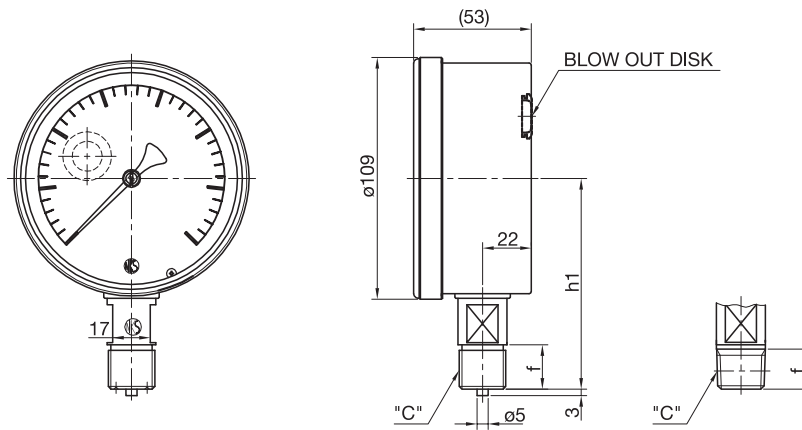
- * In case of selecting pressure gauge, choose the pressure range which can be used in between 30~65% of full scale, so that the gauge can give its full capacity.
- * Also should be confirmed weather the wetted parts material is suitable for the fluid or not.
- * For oxygen service, please order us "USE NO OIL"
- * For acetylene service, please order us "USE NO OIL" with corrosion-proof.

SPECIFICATION

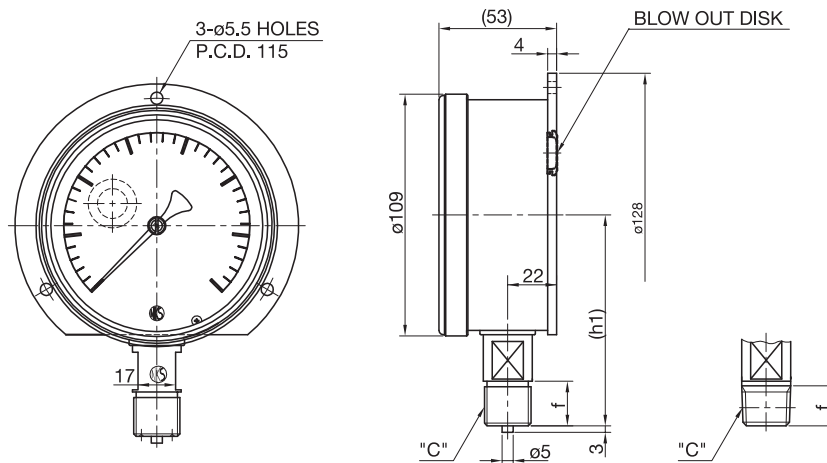
- **Model :** BE10. Process Industrial Pressure Gauge
- **Fluid :**
Gas or Liquid
- **Case construction :** Seal type
IP43 but not sealed completely.
- **Size :**
100 Dia.
- **Mounting :**
A type (Stem mounting)
B type (Surface wall mounting)
- **Connection :** Refer to the document "Screw for JIS pipe" in the technical sheet.
1/4"PF, 3/8"PF, 1/2"PF
1/4"PT, 3/8"PT, 1/2"PT
1/4"NPT, 3/8"NPT, 1/2"NPT
* For other connections, please contact us.
- **Wetted parts materials :**
Wetted parts genegally mean the bourdon tube and socket.
Bourdon tube ----- 316SS
Socket (Shank) ----- 316SS
- **Case and Cover material :**
Aluminium with Black finish
- **Pressure range :**
0 ~ 0.1 → 0 ~ 100 MPa
-0.1 ~ 0 → -0.1 ~ 2 MPa
- **Accuracy :**
±1.0% F.S. (Pressure & Vacuum)
±1.5% F.S. (Compound)
- **Operating temperature :**
Ambient : -5 ~ 40°C
Fluid : -20 ~ 80°C
- **Window :**
Glass
- **Blowout disk :**
When an emergency, bourdon tube exploded, it open up internal-pressure from blowout disk, and blowout disk prevents puncture of window.
Note : To keep normal function, please take a space behind of gauge at least 10mm when installing.
Don't process or stop up the blowout disk.
- **Weight :**
100 Dia. Approx. 0.65kg

Outline dimension & Mounting type (BE10 Series)

BE10-1□□



BE10-2□□



C	f	(h1)
PF1/4	16	92
PF3/8	18	94
PF1/2	20	95
PT1/4	14	92
PT3/8	16	94
PT1/2	18	96
NPT1/4	14	92
NPT3/8	16	94
NPT1/2	18	96

() = Reference dimension

Available pressure range table (BE10 Series)

Division	Scale (MPa)	Min. graduation	Std. accuracy ($\pm\%$ of F.S.)	Order code
Pressure range	0 ~ 0.05	0.001	1.0	A
	0 ~ 0.1	0.002	1.0	B
	0 ~ 0.2	0.005	1.0	C
	0 ~ 0.3	0.01	1.0	D
	0 ~ 0.4	0.01	1.0	E
	0 ~ 0.5	0.01	1.0	F
	0 ~ 0.6	0.02	1.0	G
	0 ~ 1	0.02	1.0	H
	0 ~ 1.5	0.05	1.0	I
	0 ~ 2	0.05	1.0	J
	0 ~ 2.5	0.05	1.0	K
	0 ~ 3.5	0.1	1.0	L
	0 ~ 5	0.1	1.0	M
	0 ~ 7	0.2	1.0	N
	0 ~ 10	0.2	1.0	O
	0 ~ 15	0.5	1.0	P
	0 ~ 25	0.5	1.0	Q
	0 ~ 35	1	1.0	R
	0 ~ 50	1	1.0	S
	0 ~ 70	2	1.0	T
	0 ~ 100	2	1.0	U
Vacuum range	-0.1 ~ 0	0.002	1.0	V
Compound range	-0.1 ~ 0.1	0.005	1.5	1
	-0.1 ~ 0.2	0.01	1.5	2
	-0.1 ~ 0.3	0.01	1.5	3
	-0.1 ~ 0.4	0.01	1.5	4
	-0.1 ~ 0.5	0.02	1.5	5
	-0.1 ~ 0.6	0.02	1.5	6
	-0.1 ~ 1	0.02	1.5	7
	-0.1 ~ 1.5	0.05	1.5	8
	-0.1 ~ 2	0.05	1.5	9

Model number configuration (BE10 Series)

* For ordering, Please specify the model number and each spec.

BE **1** **0** — (1) (2) (3) — (4) (5) (6) (7) (8) (9) (10) (11) (12) (13) (14) (15)

Model		Selective spec.		Option	
Dial size	10	ø100			
① Type of mounting	1	A Type (Bottom connection)			
	2	B Type (Wall mounting connection)			
② Type of connection	1	NPT3/8			
	2	PF1/4			
	3	PF3/8			
	4	PF1/2			
	5	NPT1/4			
	6	NPT1/2			
	7	PT1/4			
	8	PT3/8			
	9	PT1/2			
	0	Other			
③ Wetted parts material	2	304SS			
	3	316SS (Std.)			
	0	Other			
④ Range (MPa)	A ~ 9	Refer to range table			
⑤ Accuracy	0	±1.0% of F.S. (Pressure & Vacuum range)			
	1	±1.5% of F.S. (Compound range)			
⑥ Pointer	0	Standard			
	1	Other			
⑦ Glass	0	Standard			
	1	Other			
⑧ Treatment	0	Nil			
	1	Use no oil			
⑨ Throttle	0	Nil			
	1	FS10-011 or FS10-013 Corrosion-proof use			
	3	FS10-081 (With pipe)			
⑮ Documents	0	Nil			
	1	Required			