



ST42 & ST62 Grade 0.5 Dry Type-Stainless Steel Pressure Gauge

OUTLINE

This pressure gauge has been designed for high-precision application and is equipped with all stainless steel materials. Its case is of dustproof type. As a gauge high-precision measurement for research work, this pressure gauge is used for research and experiment, and for calibrating secondary gauges as a standard pressure gauge.

FEATURES

- A bourdon tube of this gauge has been especially designed for high-precision applications. This bourdon tube is also provided with excellent corrosion resistance.
- To secure safety of operation in case this pressure gauge breaks during direct reading, a blowout disk window is provided as a standard.

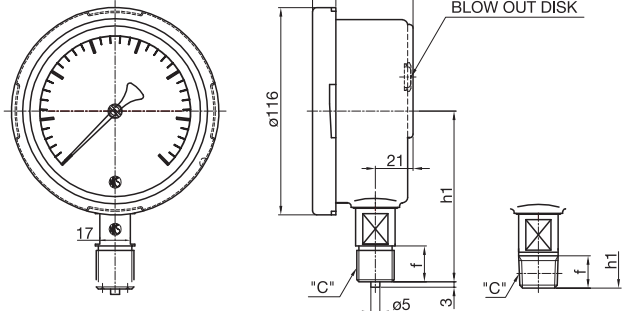
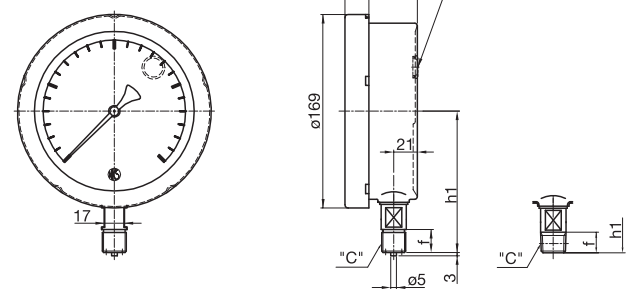
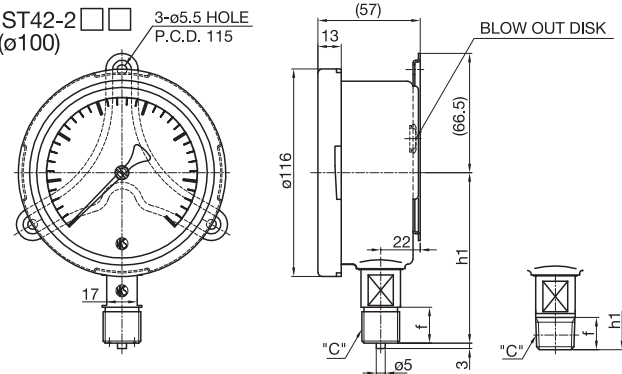
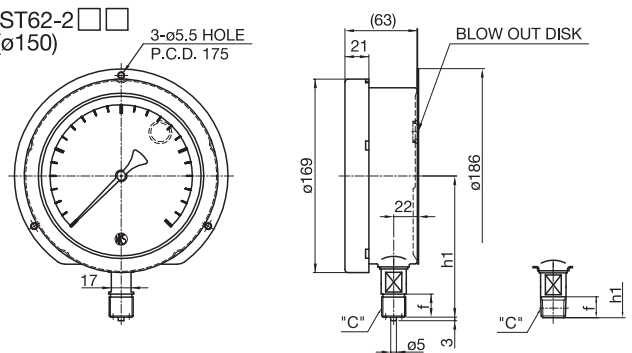
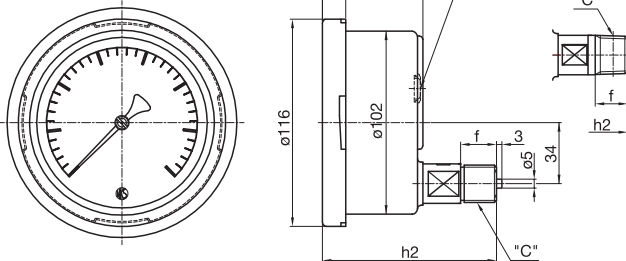
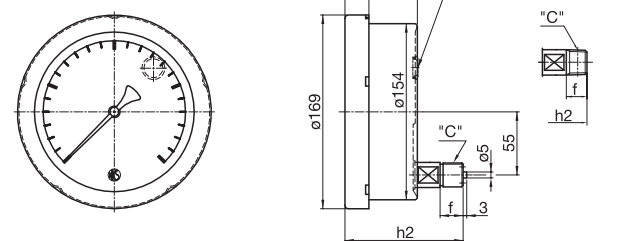
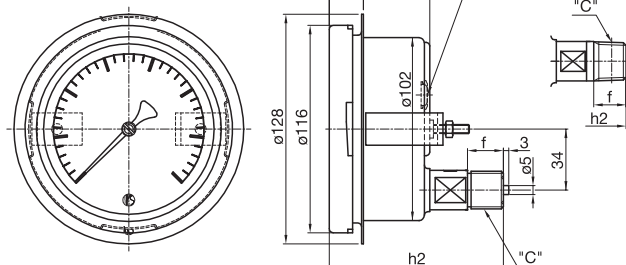
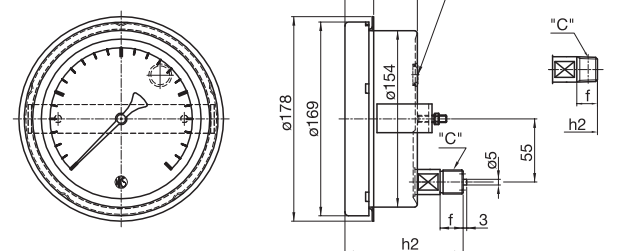
* In case of selecting pressure gauge, choose the pressure range which can be used in between 30~65% of full scale, so that the gauge give its full capacity.

* Also should be confirmed whether the wetted parts material is suitable for the fluid or not.

SPECIFICATION

- **Model :** ST42 & ST62 Series (Grade 0.5)
- **Fluid :** Gas or Liquid
- **Size :**
100 Dia. (ST42 Series)
150 Dia. (ST62 Series)
- **Mounting :**
Stem ----- A type
Surface ----- B type
Direct ----- D type (Back mounting)
Panel ----- BD type (Mounting clamp)
- **Connection :**
1/4"PF, 3/8"PF, 1/2"PF
1/4"PT, 3/8"PT, 1/2"PT
1/4"NPT, 3/8"NPT, 1/2"NPT
* For other connection, please contact us.
- **Wetted parts materials :**
Bourdon tube ----- 316SS
Socket(Shank) ----- 316SS, 304SS (150 Dia. only)
- **Case and Cover material :**
304SS, 316SS (316SS is only request)
- **Protection :** IP43
- **Pressure range :**
0 ~ 0.1 → 0 ~ 5 MPa
-0.1 ~ 0 MPa
- **Accuracy :**
±0.5% F.S.
- **Operating temperature :**
Ambient : -5 ~ 40°C
Fluid : -20 ~ 80°C
- **Window :**
Safety glass
- **Pointer :**
Twist pointer
- **Blowout disk :**
When an emergency, bourdon tube exploded, it open up internal-pressure from blowout disk, and blowout disk prevents puncture of window.
Note : To keep normal function, please take a space behind of gauge at least 10mm when installing.
Don't process or stop up the blowout disk.
- **Weight :** 100 Dia. Approx. 0.75kg
150 Dia. Approx. 1.2kg

Outline dimension & Mounting type (ST42 & ST62 Series)

ST42-1 □ □
(ø100)ST62-1 □ □
(ø150)ST42-2 □ □
(ø100)ST62-2 □ □
(ø150)ST46-3 □ □
(ø100)ST66-3 □ □
(ø150)ST47-4 □ □
(ø100)ST67-4 □ □
(ø150)

C	f	h1	h2	Appli.
PF1/4	16	92	94	ST42 ST46 ST47 (ø100)
PF3/8	18	94	96	
PF1/2	20	95	97	
PT1/4	14	92	94	
PT3/8	16	94	96	
PT1/2	18	96	98	
NPT1/4	14	92	94	
NPT3/8	16	94	96	
NPT1/2	18	96	98	

C	f	h1	h2	Appli.
PF1/4	16	119	101	ST62 ST66 ST67 (ø150)
PF3/8	18	121	103	
PF1/2	20	123	105	
PT1/4	14	116	101	
PT3/8	16	118	103	
PT1/2	18	120	105	
NPT1/4	14	116	101	
NPT3/8	16	118	103	
NPT1/2	18	120	105	

Available pressure range table (ST42 & ST62 Series)

Division	Scale (MPa)	Min. graduation	Std. accuracy ($\pm\%$ of F.S.)	Order code
Pressure range	0 ~ 0.1	0.001	0.5	B
	0 ~ 0.2	0.002	0.5	C
	0 ~ 0.3	0.005	0.5	D
	0 ~ 0.4	0.005	0.5	E
	0 ~ 0.6	0.005	0.5	G
	0 ~ 1	0.01	0.5	H
	0 ~ 1.5	0.02	0.5	I
	0 ~ 2	0.02	0.5	J
	0 ~ 2.5	0.02	0.5	K
	0 ~ 3.5	0.05	0.5	L
	0 ~ 5	0.05	0.5	M
Vacuum range	-0.1 ~ 0	0.001	0.5	V

Model number configuration (ST42 & ST62 Series)

* For ordering, Please specify the model number and each spec.

ST — 3 — 0 0 X X X X X X

① ② ③ ④ ⑤ ⑥ ⑦ ⑧ ⑨ ⑩ ⑪ ⑫ ⑬ ⑭ ⑮

Model		Selective spec.	Option
Dial size	4	ø100	
	6	ø150	
Type	2	Bottom connection (Wall mounting bracket)	
	6	Back connection	
	7	Back connection (Panel mounting bracket)	
① Type of mounting	1	A type	
	2	B type	
	3	D type	
	4	BD type	
② Type of connection	1	NPT3/8	
	2	PF1/4	
	3	PF3/8	
	4	PF1/2	
	5	NPT1/4	
	6	NPT1/2	
	7	PT1/4	
	8	PT3/8	
	9	PT1/2	
	0	Other	
③ Socket material	2	304SS	
	3	316SS	
	0	Other	
④ Range	B ~ V	Refer to range table	
⑤ Accuracy	0	±0.5% F.S.	
⑥ Pointer	0	Standard	
⑦ Glass	0	Standard	
	1	Nil	
	2	Other	
⑧ Treatment	1	Use no oil	
	2	Nil	
	0	Other	
⑮ Document	0	Nil	
	1	Required	