

Outline dimension & Mounting type (FP10 & FP11 Series pipe siphon)



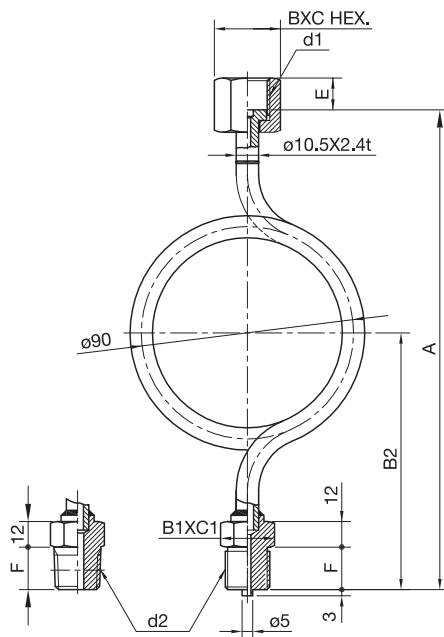
* Pipe siphon (FP)

This pipe siphon is applied to measuring steam pressure or the case where the temperature of measuring fluid is high.

- Model : FP10 & FP11 Series pipe siphon
- Fluid : Gas or liquid
- Connection type : Female thread x Male thread
- Max. allowable working pressure : 20 MPa
- Test pressure : 30 MPa
- Operating temperature : Less than 350°C
- Material : 304SS, 316SS, 316LSS, Other (Request)
- Winding : Single winding & Double winding
- Weight : Approx. 0.5kg

* For ordering, Please specify the model number and each spec.

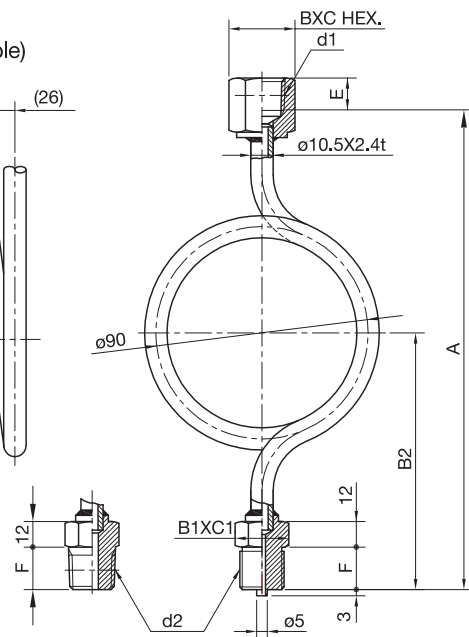
F P		1	2	3	4	5	6	7	8	9	10	11	12	13	14	15
10 Single winding					X						X					
11 Double winding																
		d1			d2				Material		8 Finish				15 Document	
2 PF1/4"		3 PF3/8"	4 PF1/2"	2 PF1/4"				3 316SS	0 Nil				0 Nil			
7 PT1/4"		8 PT3/8"	9 PT1/2"	7 PT1/4"				4 316LSS	1 Use no oil				1 Required			
B NPT1/4"		C NPT3/8"	D NPT1/2"	B NPT1/4"				5 Other	2 Use no water							
									3 Use no oil							



FP10 - □□□

(Single)

(Double)



FP11 - □□□

Model No.		d ₁ x d ₂	A	B2	E	F	BXC HEX.	B1XC1 HEX.
FP10-223	FP11-223	PF1/4 X PF1/4	212	108	10	16	19 X 21.7	19 X 21.9
FP10-333	FP11-333	PF3/8 X PF3/8	215	110	13	18	22 X 25.4	
FP10-383	FP11-383	PF3/8 X PT3/8	217	112	15	20	27 X 31.2	22 X 25.4
FP10-443	FP11-443	PF1/2 X PF1/2						
FP10-493	FP11-493	PF1/2 X PT1/2	215	110	14	18	22 X 25.4	19 X 21.9
FP10-883	FP11-883	PT3/8 X PT3/8						
FP10-993	FP11-993	PT1/2 X PT1/2	219	112	17	20	27 X 31.2	22 X 25.4
FP10-CC3	FP11-CC3	NPT3/8 X NPT3/8	215	110	14	18	22 X 25.4	19 X 21.9
FP10-DD3	FP11-DD3	NPT1/2 X NPT1/2	219	112	17	20	27 X 31.2	22 X 25.4

Outline dimension & Mounting type (FP50 Series flange type pipe siphon)



* Pipe siphon (FP)

This pipe siphon is applied to measuring steam pressure or the case where the temperature of measuring fluid is high.

- Model : FP50 Series flange type pipe siphon
- Fluid : Gas or liquid
- Connection type : Female thread x Flange mounting
- Max. allowable working pressure : 20 MPa
- Test pressure : 30 MPa
- Operating temperature : Less than 350°C
- Material : 304SS, 316SS, 316LSS, Other (Request)
- Winding : Single winding
- Weight : Approx. kg

* For ordering, Please specify the model number and each spec.

FP **5** **0** — (1) (2) (3) — (4) (5) **X** **X** (8) **X** **X** **X** **X** **X** **X** (15)

50 Single winding

Line size			
A	10A(3/8")	F	40A(1 1/2")
B	15A(1/2")	G	50A(2")
C	20A(3/4")	H	65A(2 1/2")
D	25A(1")	I	80A(3")
E	32A(1 1/4")	J	100A(4")

d1		
2	PF1/4"	3
7	PT1/4"	8
B	NPT1/4"	C
		D

Flange rating		
A	JIS 10K	F
B	JIS 16K	G
C	JIS 20K	H
D	JIS 30K	I
E	JIS 40K	J

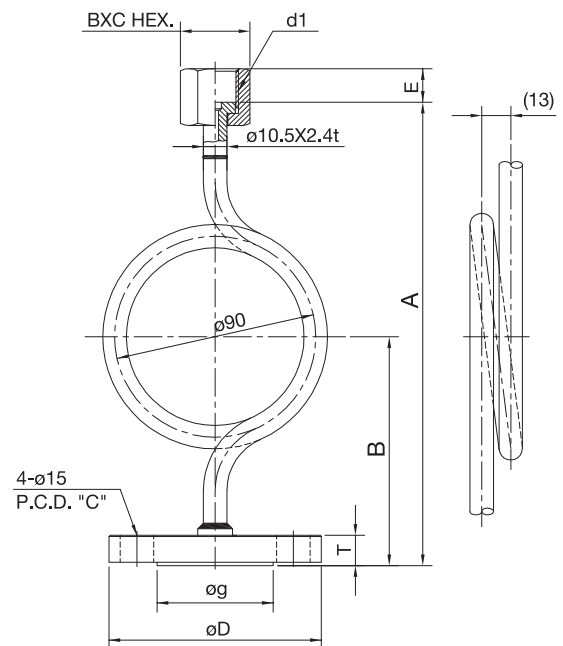
8 Finish		
0	Nil	
1	Use no oil	
2	Use no water	
3	Use no oil & Water	

15 Document	
0	Nil
1	Required

Shape	
1	FF
2	RF
3	RTJ
4	Other

Material	
2	304SS
3	316SS
4	316LSS
5	Other

Model No.	d1 x Flange	A	B	D	T	g	C	E	BXC HEX.
FP50-3AA	PF3/8 X 10K10A	195	90	90	12	46	65	13	22X25.4
FP50-3AB	PF3/8 X 10K15A			95		51	70		
FP50-3AC	PF3/8 X 10K20A			100	14	56	75		
FP50-4AA	PF1/2 X 10K10A			90	12	46	65		
FP50-4AB	PF1/2 X 10K15A			95		51	70		
FP50-4AC	PF1/2 X 10K20A			100	14	56	75		
FP50-3CA	PF3/8 X 20K10A	200	95	90	14	46	65	13	22X25.4
FP50-3CB	PF3/8 X 20K15A			95		51	70		
FP50-3CC	PF3/8 X 20K20A			100	16	56	75		
FP50-4CA	PF1/2 X 10K10A			90	14	46	65		
FP50-4CB	PF1/2 X 20K15A			95		51	70		
FP50-4CC	PF1/2 X 20K20A			100	16	56	75		



FP50 - □□□

Outline dimension & Mounting type (FP51 Series flange type pipe siphon)



* Pipe siphon (FP)

This pipe siphon is applied to measuring steam pressure or the case where the temperature of measuring fluid is high.

- **Model :** FP51 Series flange type pipe siphon
- **Fluid :** Gas or liquid
- **Connection type :** Female thread x Flange mounting
- **Max. allowable working pressure :** 20 MPa
- **Test pressure :** 30 MPa
- **Operating temperature :** Less than 350°C
- **Material :** 304SS, 316SS, 316LSS, Other (Request)
- **Winding :** Double winding
- **Weight :** Approx. kg

* For ordering, Please specify the model number and each spec.

FP 5 1 — (1) (2) (3) — (4) (5) (6) (7) (8) (9) (10) (11) (12) (13) (14) (15)

51 Double winding

A	10A(3/8")	F	40A(1 1/2")
B	15A(1/2")	G	50A(2")
C	20A(3/4")	H	65A(2 1/2")
D	25A(1")	I	80A(3")
E	32A(1 1/4")	J	100A(4")

A	JIS 10K	F	ANSI 150#	K	ANSI 2500#
B	JIS 16K	G	ANSI 300#	L	JPI 150#
C	JIS 20K	H	ANSI 600#	M	JPI 300#
D	JIS 30K	I	ANSI 900#	N	JPI 600#
E	JIS 40K	J	ANSI 1500#	P	JPI 900#

2	PF1/4"	3	PF3/8"	4	PF1/2"
7	PT1/4"	8	PT3/8"	9	PT1/2"
B	NPT1/4"	C	NPT3/8"	D	NPT1/2"

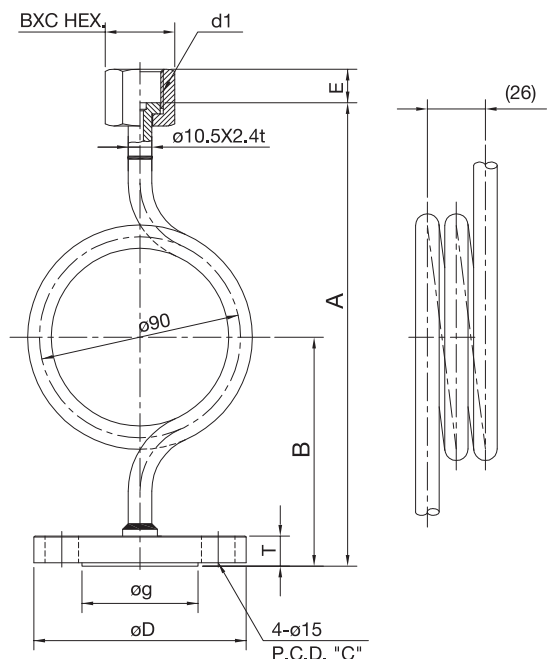
0	Nil
1	Use no oil
2	Use no water
3	Use no oil & Water

0	Nil
1	Required

1	FF
2	RF
3	RTJ
4	Other

2	304SS
3	316SS
4	316LSS
5	Other

Model No.	d1 x Flange	A	B	D	T	g	C	E	BXC HEX.
FP51-3AA	PF3/8 X 10K10A	195	90	90	12	46	65	13	22X25.4
FP51-3AB	PF3/8 X 10K15A			95	12	51	70		
FP51-3AC	PF3/8 X 10K20A			100	14	56	75		
FP51-4AA	PF1/2 X 10K10A			90	12	46	65	15	27X31.2
FP51-4AB	PF1/2 X 10K15A			95	12	51	70		
FP51-4AC	PF1/2 X 10K20A			100	14	56	75		
FP51-3CA	PF3/8 X 20K10A	200	95	90	14	46	65	13	22X25.4
FP51-3CB	PF3/8 X 20K15A			95	14	51	70		
FP51-3CC	PF3/8 X 20K20A			100	16	56	75		
FP51-4CA	PF1/2 X 10K10A			90	14	46	65	15	27X31.2
FP51-4CB	PF1/2 X 20K15A			95	14	51	70		
FP51-4CC	PF1/2 X 20K20A			100	16	56	75		



FP51 - □□□ - □□

Outline dimension & Mounting type (FT10 & FT11 Series tank siphon)



* Tank siphon

This tank siphon is applied to the substitution of measuring fluid and the case where oil is forbidden.

• Fluid : Liquid

• Connection type : Female thread x Male thread

• Max. allowable working pressure :

Std. (FT10) : 20 MPa, High pressure (FT11) : 50 MPa

• Test pressure : FT10 → 20 MPa, FT11 → 50 MPa

• Tank capacity : 80°C

• Operating temperature : Less than 350°C

• Wetted parts material : Stainless steel

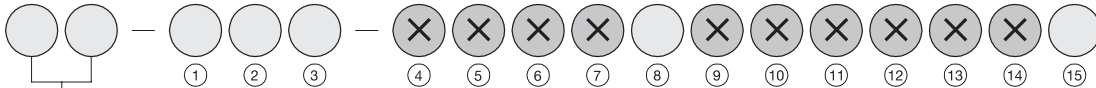
• Weight : Approx. 1.26kg

* Tank siphon is used for testing of pressure gauge for "Use No Oil" which is applied to food or oxygen.

To prevent flow of fluid (oil) into pressure element, pressure is transferred to pressure gauge through substitution liquid in a tank siphon.

* For ordering, Please specify the model number and each spec.

FT



10	Standard
11	High pressure

d1			
2	PF1/4"	3	PF3/8"
4	PF1/2"	7	PT1/4"
8	PT3/8"	9	PT1/2"
B	NPT1/4"	C	NPT3/8"
D	NPT1/2"		

Material	
2	304SS
3	316SS
4	316ISS

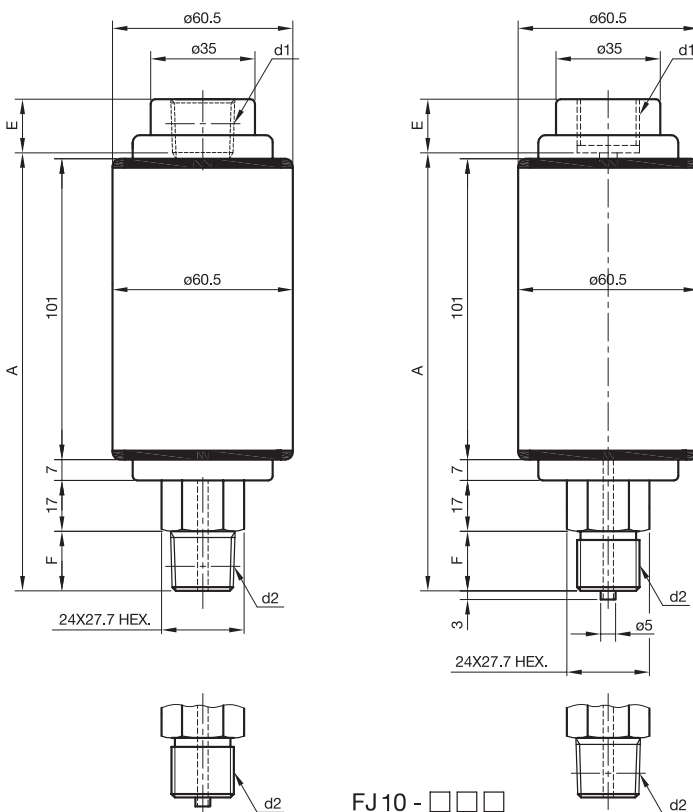
d2			
2	PF1/4"	3	PF3/8"
4	PF1/2"	7	PT1/4"
8	PT3/8"	9	PT1/2"
B	NPT1/4"	C	NPT3/8"
D	NPT1/2"		

8 Finish

0	Nil
1	Use no oil
2	Use no water
3	Use no oil

15 Document

0	Nil
1	Required



Model No.		d1 x d2	A	E	F
FT10-333	FT11-333	PF3/8 X PF3/8	147	16	18
FT10-343	FT11-343	PF3/8 X PF1/2	149	16	20
FT10-383	FT11-383	PF3/8 X PT3/8	145	16	16
FT10-393	FT11-393	PF3/8 X PT1/2	147	16	18
FT10-433	FT11-433	PF1/2 X PF3/8	147	18	18
FT10-443	FT11-443	PF1/2 X PF1/2	149	18	20
FT10-483	FT11-483	PF1/2 X PT3/8	145	18	16
FT10-493	FT11-493	PF1/2 X PT1/2	147	18	18
FT10-833	FT11-833	PT3/8 X PF3/8	147	16	18
FT10-843	FT11-843	PT3/8 X PF1/2	149	16	20
FT10-883	FT11-883	PT3/8 X PT3/8	145	16	16
FT10-893	FT11-893	PT3/8 X PT1/2	147	16	18
FT10-933	FT11-933	PT1/2 X PF3/8	147	18	18
FT10-943	FT11-943	PT1/2 X PF1/2	149	18	20
FT10-983	FT11-983	PT1/2 X PT3/8	145	18	16
FT10-993	FT11-993	PT1/2 X PT1/2	147	18	18

FJ 10 - ☐ ☐ ☐
FJ 11 - ☐ ☐ ☐