

Outline dimension & Mounting type (FJ12 Series nipple)



* Nipple

These joints are applied to the connection between different thread types, different thread diameters and different pipe diameters.

• Connection type :

Male x Male joint

• Wetted part material :

Brass, Stainless steel, Steel

• Finishing :

Brass plain

Stainless steel plain

Steel/Ni gilt

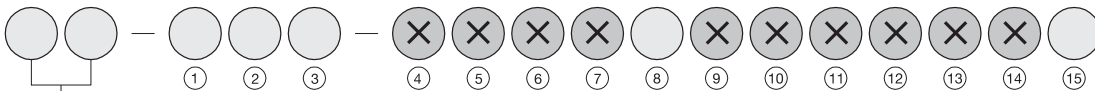
• Max. allowable working pressure :

Model	Brass	Stainless steel	Steel
FJ12	50 MPa	100 MPa	100 MPa

• Weight : Approx. 0.1 ~ 0.2kg

* For ordering, Please specify the model number and each spec.

F J



12 Male X Male

d1			
2	PF1/4"	3	PF3/8"
4	PF1/2"	7	PT1/4"
8	PT3/8"	9	PT1/2"
B	NPT1/4"	C	NPT3/8"
D	NPT1/2"		

d2			
2	PF1/4"	3	PF3/8"
4	PF1/2"	7	PT1/4"
8	PT3/8"	9	PT1/2"
B	NPT1/4"	C	NPT3/8"
D	NPT1/2"		

Material	
1	Brass
2	304SS
3	316SS
4	316LSS
5	Other

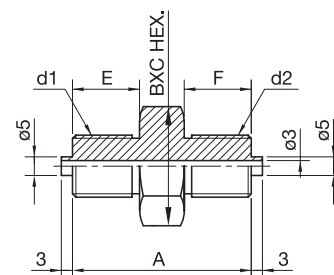
8 Finish

0	Nil
1	Use no oil
2	Use no water
3	Use no oil & Water

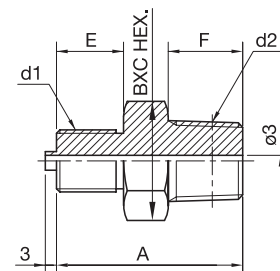
15 Document

0	Nil
1	Required

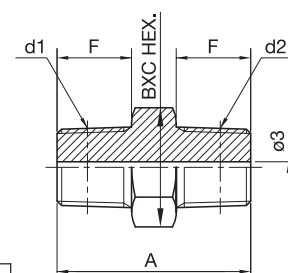
Model No.		d1 X d2	A	E	F	B X C
304SS	316SS					
FJ12-222	FJ12-223	PF1/4 X PF1/4	44	16	14	19X21.9
FJ12-232	FJ12-233	PF1/4 X PF3/8	46		16	
FJ12-242	FJ12-243	PF1/4 X PF1/2	48		18	
FJ12-332	FJ12-333	PF3/8 X PF3/8	48	18	14	19X21.9
FJ12-342	FJ12-343	PF3/8 X PF1/2	50		16	
FJ12-442	FJ12-443	PF1/2 X PF1/2	52	20	18	22X25.4



Model No.		d1 X d2	A	E	F	B X C
304SS	316SS					
FJ12-272	FJ12-273	PF1/4 X PT1/4	44	16	16	19X21.9
FJ12-282	FJ12-283	PF1/4 X PT3/8	46		18	
FJ12-292	FJ12-293	PF1/4 X PT1/2	48		20	
FJ12-372	FJ12-373	PF3/8 X PT1/4	46	18	16	19X21.9
FJ12-382	FJ12-383	PF3/8 X PT3/8	48		18	
FJ12-392	FJ12-393	PF3/8 X PT1/2	50	20	20	22X25.4
FJ12-472	FJ12-473	PF1/2 X PT1/4	48		16	
FJ12-482	FJ12-483	PF1/2 X PT3/8	50		18	
FJ12-492	FJ12-493	PF1/2 X PT1/2	52		20	



Model No.		d1 X d2	A	E	F	B X C
304SS	316SS					
FJ12-772	FJ12-773	PT1/4 X PT1/4	44	16	16	19X21.9
FJ12-782	FJ12-783	PT1/4 X PT3/8	46		18	
FJ12-792	FJ12-793	PT1/4 X PT1/2	48		20	
FJ12-882	FJ12-883	PT3/8 X PT1/4	48	18	18	19X21.9
FJ12-892	FJ12-893	PT3/8 X PT3/8	50		20	
FJ12-992	FJ12-993	PT3/8 X PT1/2	52	20		22X25.4



FJ12 - □□□