

Outline dimension & Mounting type (FJ10 Series union)



* Union

This joints are applied to the connection between different thread types, different thread diameters and different pipe diameters.

• Connection type :
Female x Male joint

• Wetted part material :
Brass, Stainless steel, Steel

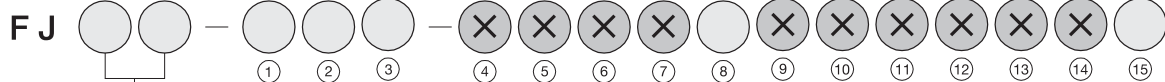
• Finishing :
Brass plain
Stainless steel plain
Steel/Ni gilt

• Max. allowable working pressure :

Model	Brass	Steel	Stainless steel
FJ10	50 MPa	100 MPa	100 MPa

• Weight : Approx. 0.1 ~ 0.2kg

* For ordering, Please specify the model number and each spec.



10 Female X Male

d1			
2	PF1/4"	3	PF3/8"
4	PF1/2"	7	PT1/4"
8	PT3/8"	9	PT1/2"
B	NPT1/4"	C	NPT3/8"
D	NPT1/2"		

d2			
2	PF1/4"	3	PF3/8"
4	PF1/2"	7	PT1/4"
8	PT3/8"	9	PT1/2"
B	NPT1/4"	C	NPT3/8"
D	NPT1/2"		

Material	
1	Brass
2	304SS
3	316SS
4	316LSS
5	Other

8 Finish

0	Nil
1	Use no oil
2	Use no water
3	Use no oil & Water

15 Document

0	Nil
1	Required

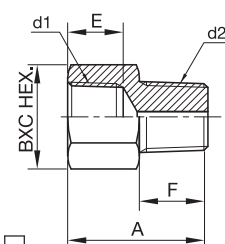
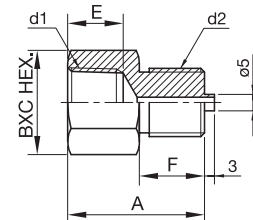
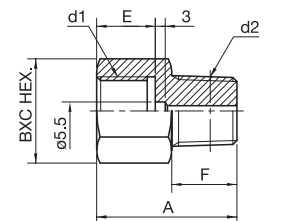
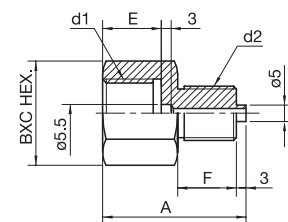
Female- Male union

Model No.	d1 x d2	A	E	F	BXC HEX.
FJ10-233	PF1/4 X PF3/8	36	14	18	19X21.9
FJ10-243	PF1/4 X PF1/2	38		20	22X25.4
FJ10-323	PF3/8 X PF1/4	36	16	16	22X25.4
FJ10-333	PF3/8 X PF1/2	40		20	27X31.2
FJ10-423	PF1/2 X PF1/4	38	18	16	27X31.2
FJ10-433	PF1/2 X PF3/8	40		20	27X31.2

FJ10-273	PF1/4 X PT1/4	34	14	16	19X21.9
FJ10-283	PF1/4 X PT3/8	36		18	19X21.9
FJ10-293	PF1/4 X PT1/2	38	16	20	22X25.4
FJ10-373	PF3/8 X PT1/4	36		16	22X25.4
FJ10-383	PF3/8 X PT3/8	38	18	18	22X25.4
FJ10-393	PF3/8 X PT1/2	40		20	27X31.2
FJ10-473	PF1/2 X PT1/4	38	18	16	27X31.2
FJ10-483	PF1/2 X PT3/8	40		18	27X31.2
FJ10-493	PF1/2 X PT1/2	42	20	20	27X31.2

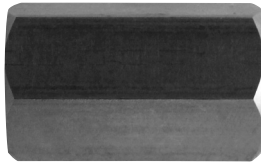
FJ10-733	PT1/4 X PF3/8	36	12	18	19X21.9
FJ10-743	PT1/4 X PF1/2	38		20	22X25.4
FJ10-833	PT3/8 X PF3/8	38	14	18	22X25.4
FJ10-843	PT3/8 X PF1/2	40		20	22X25.4
FJ10-933	PT1/2 X PF3/8	40	17	18	27X31.2
FJ10-943	PT1/2 X PF1/2	42		20	27X31.2

FJ10-773	PT1/4 X PT1/4	34	12	16	19X21.9
FJ10-783	PT1/4 X PT3/8	36		18	19X21.9
FJ10-793	PT1/4 X PT1/2	38	14	20	22X25.4
FJ10-873	PT3/8 X PT1/4	36		16	22X25.4
FJ10-883	PT3/8 X PT3/8	38	18	18	22X25.4
FJ10-893	PT3/8 X PT1/2	40		20	27X31.2
FJ10-973	PT1/2 X PT1/4	38	18	16	27X31.2
FJ10-983	PT1/2 X PT3/8	40		18	27X31.2
FJ10-993	PT1/2 X PT1/2	42	20	20	27X31.2
FJ10-DD3	NPT1/2 X NPT1/2	42	20	20	27X31.2



FJ10 - □□□

Outline dimension & Mounting type (FJ11 Series union)



* Union

This joints are applied to the connection between different thread types, different thread diameters and different pipe diameter.

• Connection type :

* Female x Female joint (FJ12) are available.

• Wetted part material :

Brass, Stainless steel, Steel

• Finishing :

Brass plain

Stainless steel plain

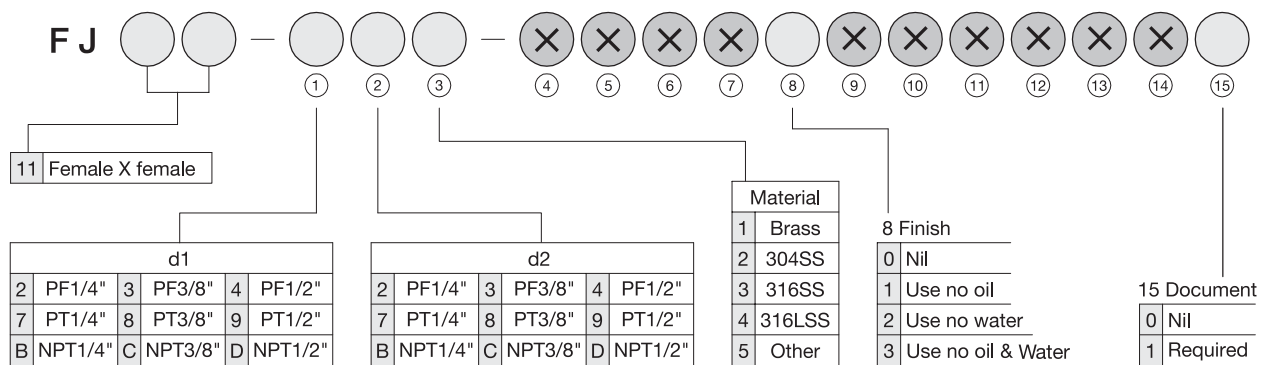
Steel/Ni gilt

• Max. allowable working pressure :

Model	Brass	Stainless steel	Steel
FJ11	50 MPa	100 MPa	100 MPa

• Weight : Approx. 0.1 ~ 0.2kg

* For ordering, Please specify the model number and each spec.

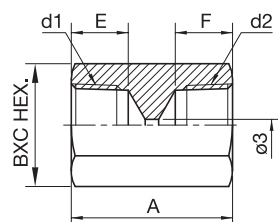
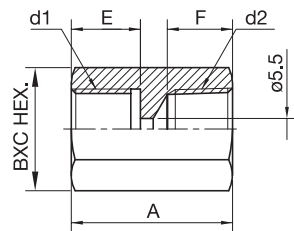
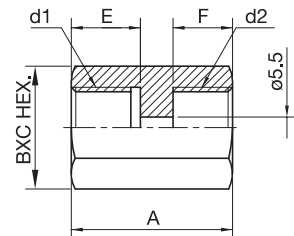


Female- Female union

Model No.	d1 x d2	A	E	F	BXC HEX.
FJ11-223	PF1/4 X PF1/4	33	14	14	19X21.9
FJ11-233	PF1/4 X PF3/8	38		16	22X25.4
FJ11-243	PF1/4 X PF1/2	42		18	27X31.2
FJ11-3B3	PF3/8 X PF1/4	38	16	14	22X25.4
FJ11-333	PF3/8 X PF3/8			16	27X31.2
FJ11-333	PF3/8 X PF1/2			18	
FJ11-423	PF1/2 X PF1/4	42	18	14	
FJ11-433	PF1/2 X PF3/8			16	
FJ11-443	PF1/2 X PF1/2			18	

FJ11-2B3	PF1/4 X NPT1/4	33	14	12	19X21.9
FJ11-2C3	PF1/4 X NPT3/8	38		14	22X25.4
FJ11-2D3	PF1/4 X NPT1/2	42		17	27X31.2
FJ11-3B3	PF3/8 X NPT1/4	38	16	12	22X25.4
FJ11-3C3	PF3/8 X NPT3/8			14	27X31.2
FJ11-3D3	PF3/8 X NPT1/2			17	
FJ11-4B3	PF1/2 X NPT1/4	42	18	12	
FJ11-4C3	PF1/2 X NPT3/8			14	
FJ11-4D3	PF1/2 X NPT1/2			17	

FJ11-773	PT1/4 X PT1/4	32	12	12	19X21.9
FJ11-783	PT1/4 X PT3/8	34		14	22X25.4
FJ11-793	PT1/4 X PT1/2	37		17	27X31.2
FJ11-883	PT3/8 X PT3/8	36	14	14	22X25.4
FJ11-893	PT3/8 X PT1/2	39		17	27X31.2
FJ11-993	PT1/2 X PT1/2	42			



FJ11 - □□□