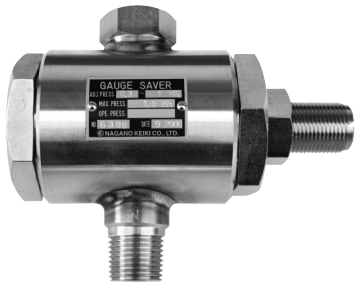


Outline dimension & Mounting type (FG10 & 20 & 30 Series gauge saver)

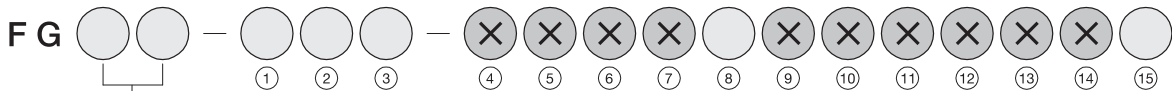


*** Gauge saver**
This gauge saver is applied to the case where pressure fluctuates suddenly and excessively large pressure applied temporarily.

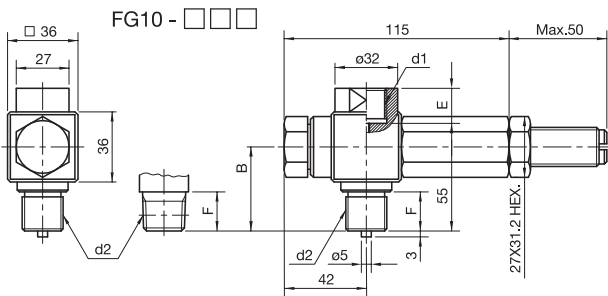
Working Temp. :
Less than 80°C

- **Model :** FG10→Piston type, FG20-30→Bellows type
- **Fluid :** FG10:20→Gas or Liquid, FG30→Gas
- **Test pressure :** FG10→30MPa, FG20→1.5MPa, FG30→1MPa
- **Reproducibility :** FG10:20→5% Max.P., FG30→10% Max.P.
- **Dead band :** 20% Max.P.
- **Wetted parts material (Body) :**
Brass copper alloy (C3604BD) : 316SS, Fluorine rubber
Stainless steel : 316SS, Fluorine rubber, PTFE
- **Weight :** FG10 - Approx. 1kg
FG20 - Approx. 1.8kg
FG30 - Approx. 2.5kg

* For ordering, Please specify the model number and each spec.

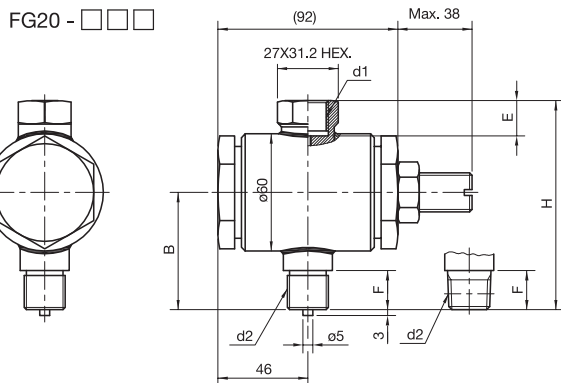


10 High pressure	d1		d2		Material	8 Finish	15 Document
20 Middle pressure	3 PF3/8"	4 PF1/2"	3 PF3/8"	4 PF1/2"			
30 Low pressure	9 PT1/2"	D NPT1/2"	9 PT1/2"	D NPT1/2"	3 316SS	1 Use no oil	0 Nil
					5 Other	2 Use no water	1 Required
						3 Use no oil & Water	

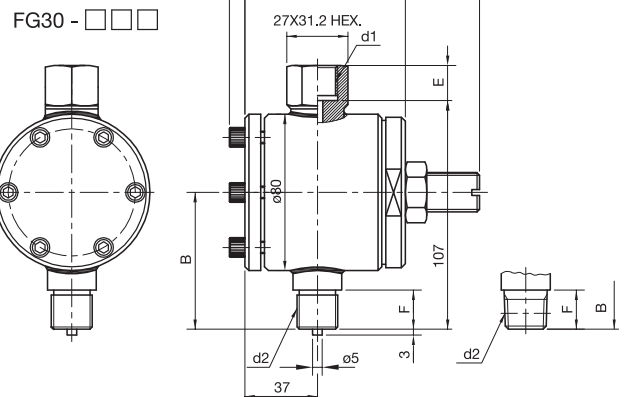


Model No.	d1 x d2	A	E	F	H
FG10-333	PF3/8 X PF3/8	41	16	18	-
FG10-443	PF1/2 X PF1/2	43	18	20	-
FG10-383	PF3/8 X PT3/8	41	16	18	-
FG10-493	PF1/2 X PT1/2	43	18	20	-
FG10-DD3	NPT1/2XNPT1/2	17	17	20	73

Set. pressure adjusting range		
Model	Adjusting range	
FG 10 (High pressure)	0.2 ~ 6 MPa	5 ~ 10 MPa
	1 ~ 3 MPa	7 ~ 15 MPa
	2 ~ 5 MPa	10 ~ 20 MPa
	3 ~ 6 MPa	
FG 20 (Middle pressure)	25 ~ 40 kPa	0.08 ~ 0.2 MPa
	0.03 ~ 0.06 MPa	0.15 ~ 0.3 MPa
	0.04 ~ 0.08 MPa	0.2 ~ 0.6 MPa
FG 30 (Low pressure)	0.06 ~ 0.15 MPa	0.3 ~ 1 MPa
	5 ~ 10 MPa	
	10 ~ 25 MPa	



Model No.	d1 x d2	A	E	F	F
FG20-333	PF3/8 X PF3/8	58	16	18	103
FG20-443	PF1/2 X PF1/2	60	18	20	105
FG20-383	PF3/8 X PT3/8	58	16	18	103
FG20-493	PF1/2 X PT1/2	60	18	20	105
FG20-DD3	NPT1/2XNPT1/2	17	17	20	105



Model No.	d1 x d2	A	E	F
FG30-333	PF3/8 X PF3/8	68	16	18
FG30-443	PF1/2 X PF1/2	70	18	20
FG30-383	PF3/8 X PT3/8	68	16	18
FG30-493	PF1/2 X PT1/2	70	18	20