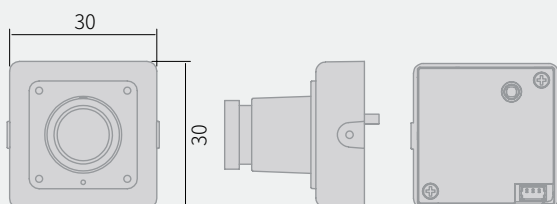


## Analog Camera

# KPC-V700U

- 1/3" 960H SONY Double Scan Super HAD CCD II
- Min. Illumination of 0.2 Lux
- Fixed Board, Pinhole, Varifocal Lens
- WDR, 3DNR, DIS, DSS, BLC
- 12VDC Max. 150mA



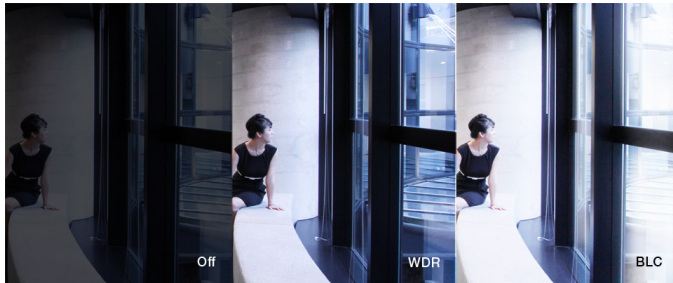
# Features



## KPC-V700U

1/3" 960H SONY Double Scan Super HAD CCD II  
Min. Illumination of 0.2 Lux  
Fixed Board, Pinhole, Varifocal Lens

WDR, 3DNR, DIS, DSS, BLC  
12VDC Max. 150mA

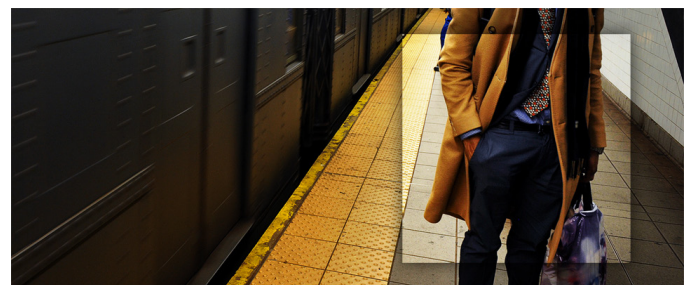
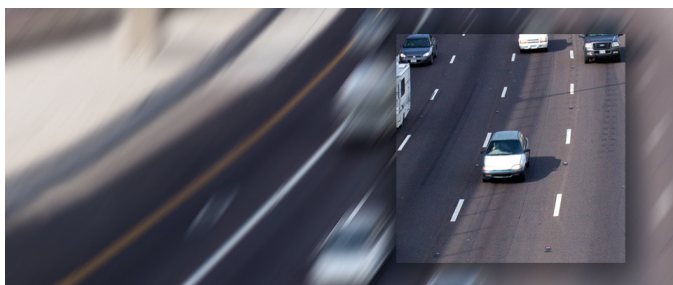


### WDR

WDR technology helps to get detailed information in harsh lighting, by capturing alternate frames using different exposure times. The frame with longer exposure time captures details in darker parts of the scene, while the frame with shorter exposure time captures the brighter areas. The camera combines the optimal portions of these two complementary frames to produce the most detailed image possible.

### 3DNR

DNR technology is crucial for surveillance camera. 3DNR works by analyzing the differences between successive frames in order to adjust pixels and improve.

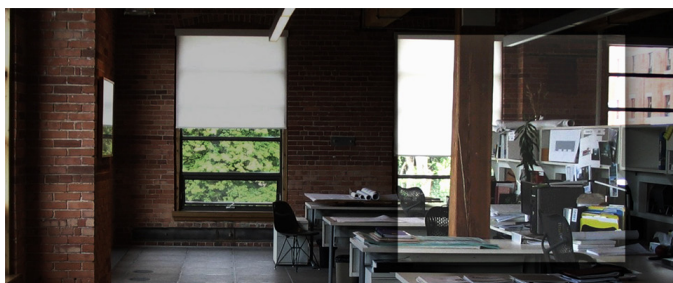


### DIS

Digital Image Stabilization (DIS) uses the motion detection core to stabilize the image from shaking due to external vibrations like oscillation and wind.

### DSS

Digital Slow Shutter (DSS) technology enhances the low light performance of a camera, producing outstanding images in low light conditions. DSS slows the picture frame rate and increases the camera's sensitivity.



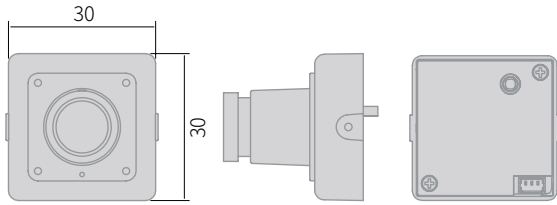
### BLC

BLC technology works by reducing the dynamic range of the entire image, while retaining the overall contrast. By compensating for unbalanced in a scene, detail is restored throughout the field of view so as to provide better visibility to identify an object of interest.

## Analog Camera

# KPC-V700U

### Dimensions



## Specifications

<b>Image Sensor</b>	1/3" 960H SONY Double Scan Super HAD CCD II
<b>Effective Pixels</b>	NTSC: 976(H) x 494(V) / PAL: 976(H) x 582(V)
<b>Max. Video Resolution</b>	1080p@30(25)fps
<b>Lens</b>	Fixed Board, Pinhole, Varifocal Lens
<b>Min. Illumination (AGC Max)</b>	0.2 Lux (F2.0, DSS Off) / 0.03 Lux (DSS Max.)
<b>S/N Ratio</b>	>50 dB (3DNR On, AGC Off)
<b>Shutter Speed</b>	1/60(1/50) s - 1/100,000 s
<b>Flickerless</b>	Auto / On / Off
<b>Day / Night</b>	Electronic D/N
<b>White Balance</b>	ATW / Push / User1 / User2 / Manual / Push lock
<b>WDR</b>	WDR
<b>BLC</b>	Off / BLC / HLC
<b>DNR</b>	3DNR
<b>DSS</b>	Off / Auto
<b>Digital Zoom Ratio</b>	1x - 255x

<b>AGC</b>	6dB - 44.8dB
<b>Other Function(s)</b>	DIS, Defog, Mirror, Brightness, Contrast, Sharpness, Hue, Gain
<b>Privacy Masking</b>	15 Zones
<b>Motion Detection</b>	4 Zones
<b>Transmission Distance</b>	Color 300 m @RG59, BW 500 m @RG59
<b>OSD Control</b>	Built-in Controller / External Control (UTC, RS-485)
<b>OSD Language</b>	English / Spanish / Russian / Portuguese / German / French / Chinese / Japanese
<b>Housing Material</b>	Aluminium
<b>Temperature</b>	Operation: -10°C ~ 50°C (14°F ~ 122°F) Storage: -20°C ~ 60°C (-4°F ~ 140°F)
<b>Max. Power Consumption</b>	12VDC 150mA
<b>Dimensions (W x H x D mm)</b>	30 x 30
<b>Weight</b>	Approx. 35 g (0.08 lbs)

## Ordering Information

KPC-V700U (Not all combinations are possible)

### Signal Type

NTSC  
PAL