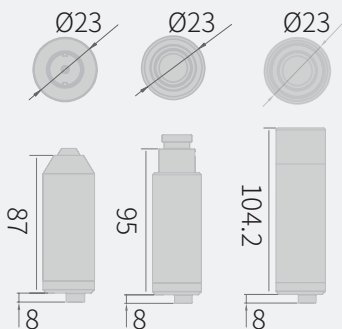


## IP Camera

# KNC-HDBi230

- 1/2.8" 2.43MP Progressive Scan CMOS
- Min. Illumination of 0.2 Lux
- Fixed Board / Pinhole Lens
- 3DNR, DSS, BLC
- Micro-SD up to 32GB
- 12VDC / PoE



# Features

## KNC-HDBi230

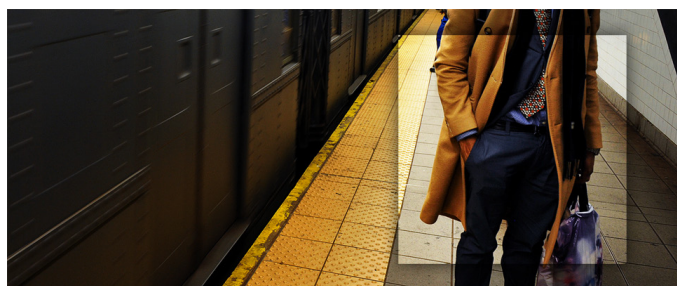
1/2.8" 2.43MP Progressive Scan CMOS  
Min. Illumination of 0.2 Lux  
Fixed Board / Pinhole Lens

3DNR, DSS, BLC  
Micro-SD up to 32GB  
12VDC / PoE



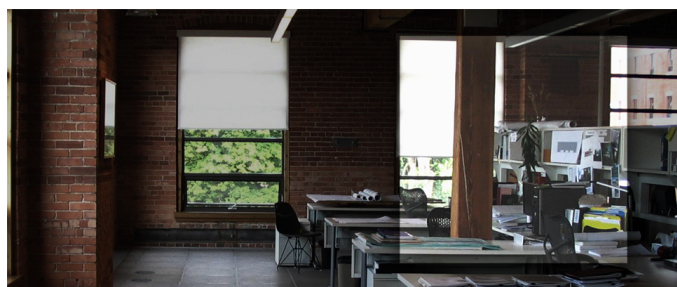
### 3DNR

DNR technology is crucial for surveillance camera. 3DNR works by analyzing the differences between successive frames in order to adjust pixels and improve.



### DSS

Digital Slow Shutter (DSS) technology enhances the low light performance of a camera, producing outstanding images in low light conditions. DSS slows the picture frame rate and increases the camera's sensitivity.



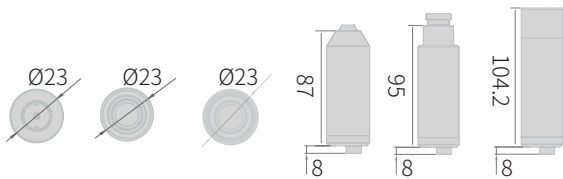
### BLC

BLC technology works by reducing the dynamic range of the entire image, while retaining the overall contrast. By compensating for unbalanced in a scene, detail is restored throughout the field of view so as to provide better visibility to identify an object of interest.

IP Camera

# KNC-HDBi230

## Dimensions



## Specifications

<b>Image Sensor</b>	1/2.8" Progressive Scan CMOS
<b>Effective Pixels</b>	1984(H) x 1225(V), 2.43MP
<b>Video Compression</b>	H.264 / MJPEG
<b>Max. Video Resolution</b>	(1920x1080)@30fps
<b>Multiple Streams</b>	4
<b>Lens</b>	f=3.7mm (3MP) / f=4.3mm (3MP) / f=6mm (3MP) / f=8mm (1.3MP) / f=4.3mmP4 (1.3MP)
<b>FOV</b>	f=3.7mm (116.3°) / f=4.3mm (94.82°) / f=6mm (63.48°) / f=8mm (50.01°) / f=4.3mmP4 (89.54°)
<b>F-Stop</b>	f=3.7mm (F2.5) / f=4.3mm (F1.8) / f=6mm (F2.0) / f=8mm (F1.8) / f=4.3mmP4 (F2.0)
<b>Min. Illumination (AGC Max.)</b>	0.2 Lux (F2.0, DSS Off) / 0.05 Lux (DSS Max.)
<b>Shutter Speed</b>	1/30 s - 1/8,000 s
<b>IR LED</b>	-
<b>IR Distance</b>	-
<b>Day / Night</b>	Electronic D/N
<b>Alarm Input / Output</b>	-
<b>WDR</b>	D-WDR

<b>DNR</b>	3DNR
<b>Function</b>	BLC, AGC, DSS
<b>Privacy Masking</b>	5 zones
<b>Motion Detection</b>	5 zones
<b>Corridor Mode (9:16 aspect ratio)</b>	0
<b>Analog Video Out</b>	Yes
<b>Audio</b>	-
<b>Protocol</b>	IPv4, HTTP, TCP, RTSP, RTP, UDP, IGMP, RTCP, SMTP, FTP, ICMP, DHCP, ARP, DNS, DDNS, HTTPS, UPnP
<b>uSD Max. Capacity</b>	32 GB
<b>Housing Material</b>	Aluminium
<b>IP Rating</b>	IP67 (Waterproof Type)
<b>Operating Temperature</b>	-10°C to 50°C (14°F to 122°F)
<b>Power Source</b>	PoE (IEEE 802.3af)
<b>Max. Power Consumption</b>	12VDC 220mA
<b>Dimensions (W x H x D mm)</b>	Ø23 x 101.2
<b>Weight</b>	Approx. 118 g (0.26 lbs)

## Ordering Information

KNC-HDBi230 (Not all combinations are possible)

Signal Type	Lens	Silk Printing	Color
NTSC	f=3.7mm (3MP)	KT&C-printed	Black
	f=4.3mm (3MP)		
PAL	f=6mm (3MP)	OEM-printed	White
	f=8mm (1.3MP)		
	f=4.3mmP4 (1.3MP)		
		Non-printed	

### Accessory for this product

KA-SB500

