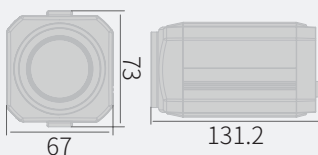


IP Camera

KNC-HZAi302

- 1/2.8" 2.38MP Progressive Scan CMOS
- Min. Illumination of 0.6 Lux
- 30x Optical Zoom Lens
- WDR, TDN, 3DNR, DIS, DSS, BLC
- Bi-audio, (Internal Mic.) / Micro-SD up to 32GB
- 12VDC / PoE

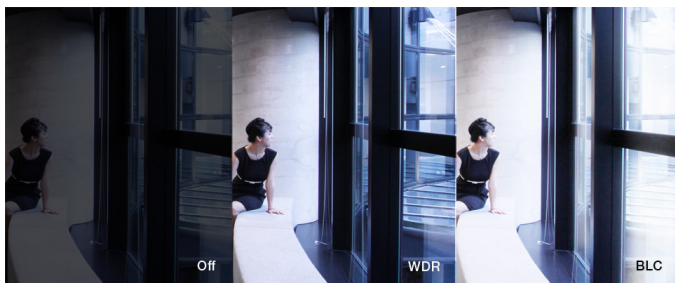


Features

KNC-HZai302

1/2.8" 2.38MP Progressive Scan CMOS
Min. Illumination of 0.6 Lux
30x Optical Zoom Lens

WDR, TDN, 3DNR, DIS, DSS, BLC
Bi-audio, (Internal Mic.) / Micro-SD up to 32GB
12VDC / PoE

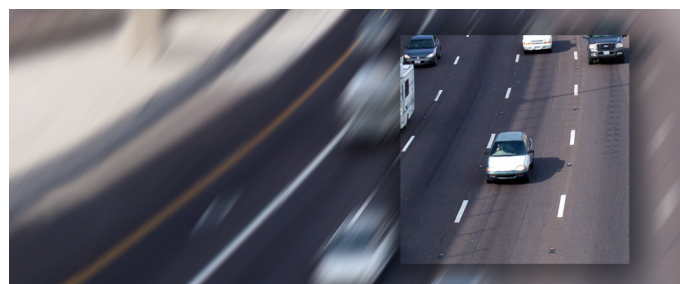


WDR

WDR technology helps to get detailed information in harsh lighting, by capturing alternate frames using different exposure times. The frame with longer exposure time captures details in darker parts of the scene, while the frame with shorter exposure time captures the brighter areas. The camera combines the optimal portions of these two complementary frames to produce the most detailed image possible.

TDN

True Day/Night feature can be used for precise color reproduction. With built-in dual filter system, as known as Infrared Cutfilter Removal (ICR) mechanism, the infrared cutfilter can be used at day time, or in bright lighting conditions, to provide enhanced image in full-color. At night time, or in harsh lighting conditions, it will be removed for greater light sensitivity in monochrome mode.

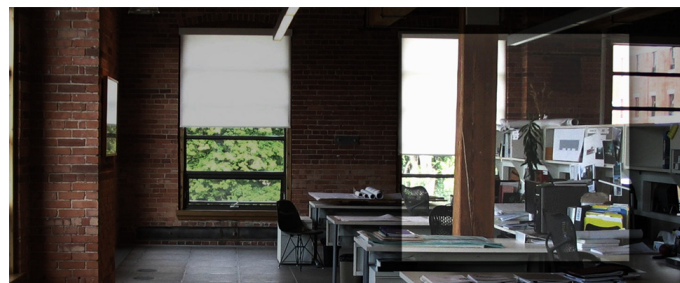
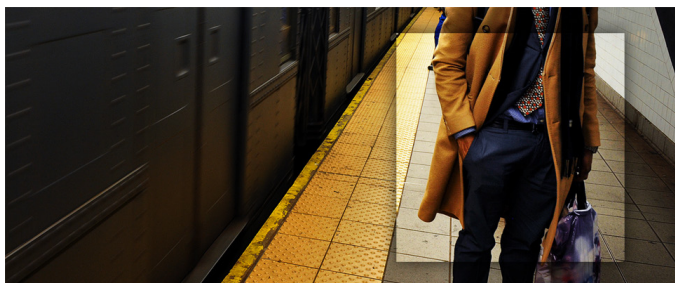


3DNR

DNR technology is crucial for surveillance camera. 3DNR works by analyzing the differences between successive frames in order to adjust pixels and improve.

DIS

Digital Image Stabilization (DIS) uses the motion detection core to stabilize the image from shaking due to external vibrations like oscillation and wind.



DSS

Digital Slow Shutter (DSS) technology enhances the low light performance of a camera, producing outstanding images in low light conditions. DSS slows the picture frame rate and increases the camera's sensitivity.

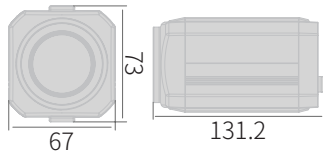
BLC

BLC technology works by reducing the dynamic range of the entire image, while retaining the overall contrast. By compensating for unbalanced in a scene, detail is restored throughout the field of view so as to provide better visibility to identify an object of interest.

IP Camera

KNC-HZAi302

Dimensions



Specifications

Image Sensor	1/2.8" Progressive Scan CMOS
Effective Pixels	1944(H) x 1224(V), 2.38MP
Video Compression	H.264 / MJPEG
Max. Video Resolution	(1920x1080)@30fps
Multiple Streams	4
Lens	f=4.3-129mm AF 30x Optical Zoom Lens (3MP)
FOV	f=4.3-129mm (72.9° - 2.64°)
F-Stop	f=4.3-129mm (F1.6)
Min. Illumination (AGC Max.)	0.6 Lux (F1.6, ICR Off, DSS Off) / 0.02 Lux (DSS Max.) / 0.06 Lux (F1.6, ICR On, DSS Off) / 0.002 Lux (DSS Max.)
Shutter Speed	1/30 s - 1/50,000 s
IR LED	-
IR Distance	-
Day / Night	True D/N
Alarm Input / Output	1/1
WDR	WDR, D-WDR
DNR	3DNR

Function	BLC, HLC, AGC, DSS, DIS
Privacy Masking	5 zones
Motion Detection	4 zones
Corridor Mode (9:16 aspect ratio)	0
Analog Video Out	Yes
Audio	G.711, G.726 (Bi-audio)
Protocol	IPv4, HTTP, TCP, RTSP, RTP, UDP, IGMP, RTCP, SMTP, FTP, ICMP, DHCP, ARP, DNS, DDNS, HTTPS, UPnP
uSD Max. Capacity	32 GB
Housing Material	Aluminium
IP Rating	-
Operating Temperature	-10°C to 50°C (14°F to 122°F)
Power Source	PoE (IEEE 802.3af)
Max. Power Consumption	12VDC 550mA
Dimensions (W x H x D mm)	67 x 73 x 131.2
Weight	Approx. 600 g (1.32 lbs)

Ordering Information

KNC-HZAi302 (Not all combinations are possible)

Signal Type	Silk Printing
NTSC	KT&C-printed
PAL	OEM-printed
	Non-printed