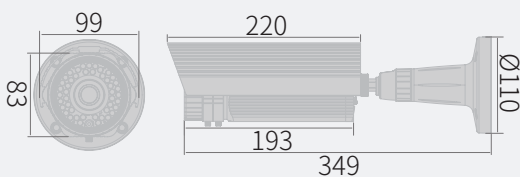


IP Camera

KNC-Ni700HD

- 1/3" 1.39MP Progressive Scan CMOS
- 45 IR LEDs up to 30 m (98ft.)
- Varifocal Lens
- TDN, 2DNR, DSS, BLC
- IP67
- 12VDC / PoE



Features

KNC-Ni700HD

1/3" 1.39MP Progressive Scan CMOS
45 IR LEDs up to 30 m (98ft.)
Varifocal Lens

TDN, 2DNR, DSS, BLC
IP67
12VDC / PoE



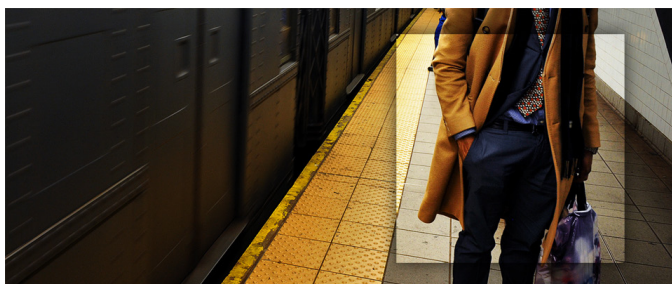
TDN

True Day/Night feature can be used for precise color reproduction. With built-in dual filter system, as known as Infrared Cutoff Removal (ICR) mechanism, the infrared cutfilter can be used at day time, or in bright lighting conditions, to provide enhanced image in full-color. At night time, or in harsh lighting conditions, it will be removed for greater light sensitivity in monochrome mode.



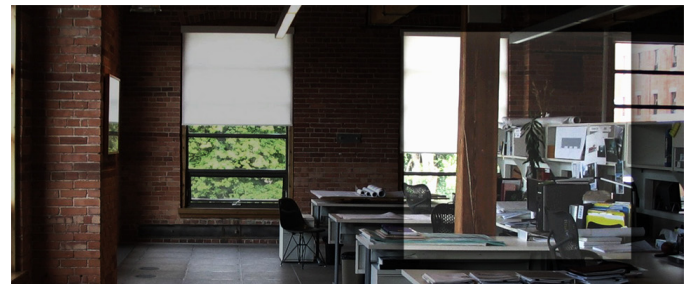
2DNR

DNR technology is crucial for surveillance camera. 2DNR works by analyzing individual frames of video in order to adjust pixels and provide clear image.



DSS

Digital Slow Shutter (DSS) technology enhances the low light performance of a camera, producing outstanding images in low light conditions. DSS slows the picture frame rate and increases the camera's sensitivity.



BLC

BLC technology works by reducing the dynamic range of the entire image, while retaining the overall contrast. By compensating for unbalanced in a scene, detail is restored throughout the field of view so as to provide better visibility to identify an object of interest.



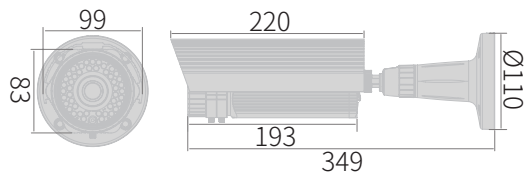
IP67

Ingress Protection (IP) rating defines protection against solid objects and liquid on a 0-6 and 0-8 scale. IP67 housing means it's dust-tight and protected against the effects of temporary submersion in water.

IP Camera

KNC-Ni700HD

Dimensions



Specifications

Image Sensor	1/3" Progressive Scan CMOS
Effective Pixels	1329(H) x 1049(V), 1.39MP
Video Compression	H.264 / MJPEG
Max. Video Resolution	(1280x1024)@30fps
Multiple Streams	2
Lens	f=3-9mm (2MP) / f=3.6-16mm (1.3MP)
FOV	"f=3-9mm (121.2° - 39.6°) / f=3.6-16mm (98.35° - 25.87°)"
F-Stop	f=3-9mm (F1.4) / f=3.6-16mm (F1.2)
Min. Illumination (AGC Max.)	1 Lux (F1.4, ICR Off, DSS Off) / 0.3 Lux (DSS Max.) / 0 Lux (with IR LED On)
Shutter Speed	1/50 s - 1/2,000 s
IR LED	45 LEDs (850nm)
IR Distance	30 m (98 ft.)
Day / Night	True D/N
Alarm Input / Output	1/1
WDR	-
DNR	2DNR

Function	BLC, AGC, DSS
Privacy Masking	2 zones
Motion Detection	5 zones
Corridor Mode (9:16 aspect ratio)	-
Analog Video Out	Yes
Audio	-
Protocol	IPv4, HTTP, TCP, RTSP, RTP, UDP, IGMP, RTCP, SMTP, FTP, ICMP, DHCP, ARP, DNS, DDNS, HTTPS, UPnP
uSD Max. Capacity	-
Housing Material	Aluminium
IP Rating	IP67
Operating Temperature	-10°C to 50°C (14°F to 122°F)
Power Source	PoE (IEEE 802.3af)
Max. Power Consumption	12VDC 680mA
Dimensions (W x H x D mm)	92.7 x 83 x 192.6
Weight	Approx. 2500 g (5.51 lbs)

Ordering Information

KNC-Ni700HD (Not all combinations are possible)

Signal Type	Lens	Silk Printing
NTSC	f=3-9mm (2MP)	KT&C-printed
PAL	f=3.6-16mm (1.3MP)	OEM-printed
		Non-printed