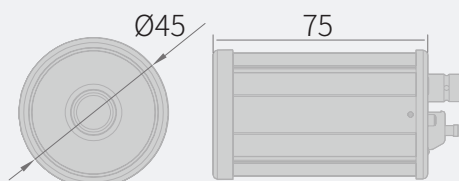


HD-SDI Camera

KPC-HDB450M

- 1/3" 2.12MP Progressive Scan CMOS
- Min. Illumination of 0.1 Lux
- Fixed Board Lens
- WDR, 3DNR, DSS, BLC
- 12VDC Max. 160mA

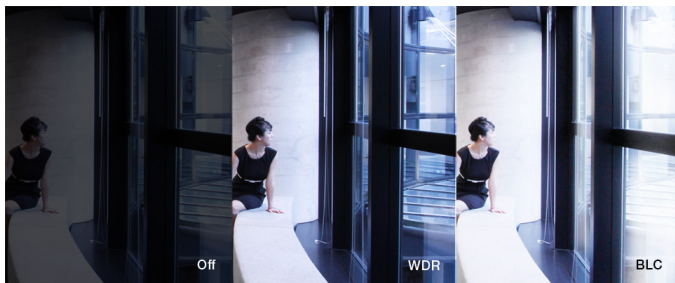


Features

KPC-HDB450M

1/3" 2.12MP Progressive Scan CMOS
Min. Illumination of 0.1 Lux
Fixed Board Lens

WDR, 3DNR, DSS, BLC
12VDC Max. 160mA



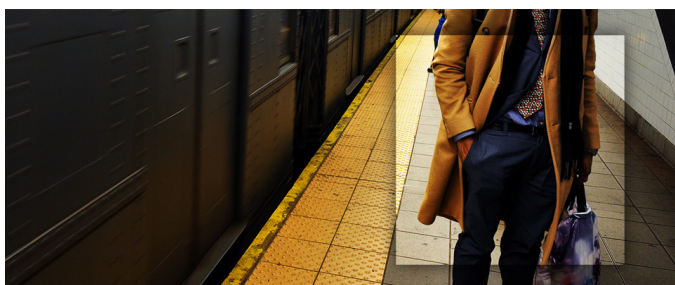
WDR

WDR technology helps to get detailed information in harsh lighting, by capturing alternate frames using different exposure times. The frame with longer exposure time captures details in darker parts of the scene, while the frame with shorter exposure time captures the brighter areas. The camera combines the optimal portions of these two complementary frames to produce the most detailed image possible.



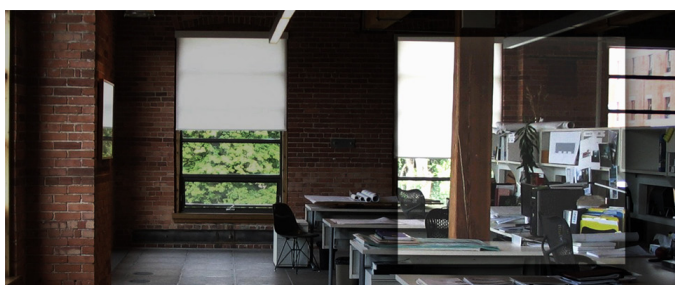
3DNR

DNR technology is crucial for surveillance camera. 3DNR works by analyzing the differences between successive frames in order to adjust pixels and improve.



DSS

Digital Slow Shutter (DSS) technology enhances the low light performance of a camera, producing outstanding images in low light conditions. DSS slows the picture frame rate and increases the camera's sensitivity.



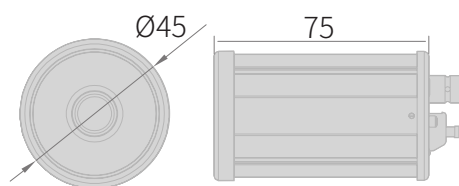
BLC

BLC technology works by reducing the dynamic range of the entire image, while retaining the overall contrast. By compensating for unbalanced in a scene, detail is restored throughout the field of view so as to provide better visibility to identify an object of interest.

HD-SDI Camera

KPC-HDB450M

Dimensions



Specifications

Image Sensor	1/3" Progressive Scan CMOS
Effective Pixels	1944(H) x 1092(V), 2.12MP
Max. Video Resolution	1080p@30(25)fps / 720p@60(50)fps
Lens	f=2.45mm / f=3.6mm / f=6mm
FOV	f=2.45mm (151.78°) / f=3.6mm (99.42°) / f=6mm (59.45°)
F-Stop	f=2.45mm (F2.5) / f=3.6mm (F2.0) / f=6mm (F2.0)
Min. Illumination (AGC Max)	0.1 Lux (F2.0, DSS Off) / 0.03 Lux (DSS Max.)
S/N Ratio	>50dB
Shutter Speed	1/30(1/25) s - 1/30,000 s
IR LED	-
IR Distance	-
Day / Night	Electronic D/N
White Balance	Auto / Push Lock / Manual
Digital Zoom Ratio	1x - 20x
WDR	WDR
BLC	OFF/ON

DNR	3DNR
DSS	Off - 4x
AGC	0 ~ 23dB
Other Function(s)	Mirror(H/V/HV), HLMASK, SHARPNESS
Privacy Masking	16 zones
Motion Detection	Yes
Video Output (Main)	HD-SDI
Video Output (Service)	Composite
OSD Control	Built-in Controller
OSD Language	ENGLISH, RUSSIAN, SPANISH, GERMAN, FRENCH, PORTUGUESE, JAPANESE
Housing Material	Aluminium
IP Rating	-
Operating Temperature	-10°C to 50°C (14°F to 122°F)
Max. Power Consumption	12VDC 160mA
Dimensions (W x H x D mm)	Ø45 x 75
Weight	Approx. 145 g (0.32 lbs)

Ordering Information

KPC-HDB450M (Not all combinations are possible)

Signal Type	Lens	Silk Printing	Color
NTSC	f=2.45mm	KT&C-printed	Black
PAL	f=3.6mm	OEM-printed	White
	f=6mm	Non-printed	Silver

Accessory for this product

KA-SB500	KA-SB730	KA-SB970	KA-SB1500