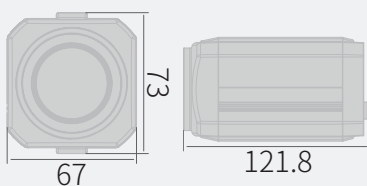


HD-SDI Camera

KPC-HZA302M

- 1/2.8" 2.38MP Progressive Scan CMOS
- Min. Illumination of 0.6 Lux
- 30x Optical Zoom Lens
- WDR, TDN, 3DNR, DIS, DSS, BLC
- 12VDC Max. 550mA



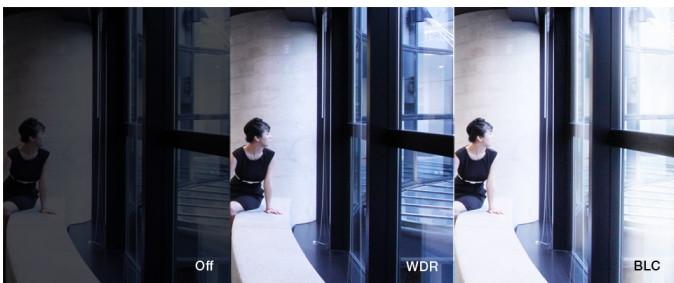
Features



KPC-HZA302M

1/2.8" 2.38MP Progressive Scan CMOS
Min. Illumination of 0.6 Lux
30x Optical Zoom Lens

WDR, TDN, 3DNR, DIS, DSS, BLC
12VDC Max. 550mA

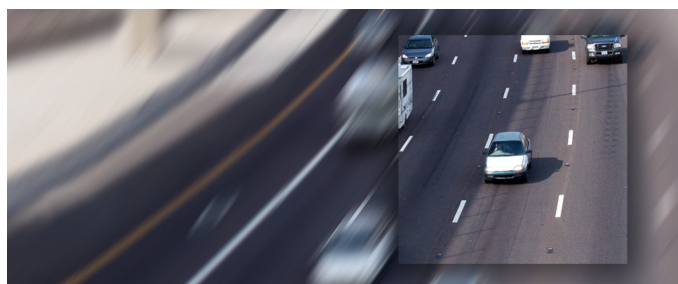


WDR

WDR technology helps to get detailed information in harsh lighting, by capturing alternate frames using different exposure times. The frame with longer exposure time captures details in darker parts of the scene, while the frame with shorter exposure time captures the brighter areas. The camera combines the optimal portions of these two complementary frames to produce the most detailed image possible.

TDN

True Day/Night feature can be used for precise color reproduction. With built-in dual filter system, as known as Infrared Cutfilter Removal (ICR) mechanism, the infrared cutfilter can be used at day time, or in bright lighting conditions, to provide enhanced image in full-color. At night time, or in harsh lighting conditions, it will be removed for greater light sensitivity in monochrome mode.

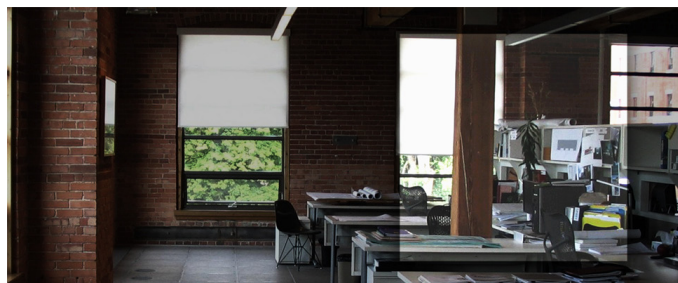
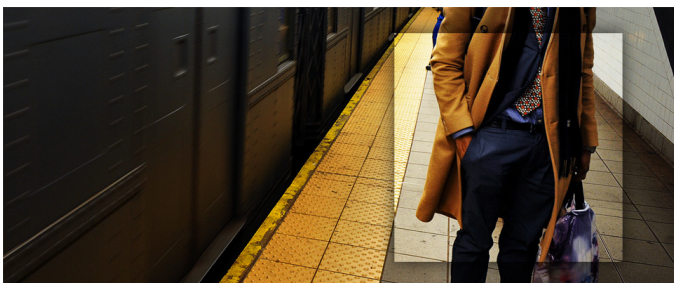


3DNR

DNR technology is crucial for surveillance camera. 3DNR works by analyzing the differences between successive frames in order to adjust pixels and improve.

DIS

Digital Image Stabilization (DIS) uses the motion detection core to stabilize the image from shaking due to external vibrations like oscillation and wind.



DSS

Digital Slow Shutter (DSS) technology enhances the low light performance of a camera, producing outstanding images in low light conditions. DSS slows the picture frame rate and increases the camera's sensitivity.

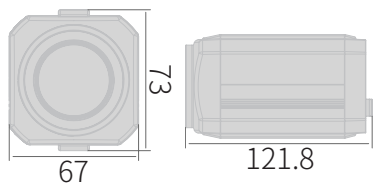
BLC

BLC technology works by reducing the dynamic range of the entire image, while retaining the overall contrast. By compensating for unbalanced in a scene, detail is restored throughout the field of view so as to provide better visibility to identify an object of interest.

HD-SDI Camera

KPC-HZA302M

Dimensions



Specifications

Image Sensor	1/2.8" Progressive Scan CMOS
Effective Pixels	1944(H) x 1224(V), 2.38MP
Max. Video Resolution	1080p@60(50)fps / 720p@60(50)fps
Lens	f=4.3-129mm AF 30x Optical Zoom Lens (3MP)
FOV	f=4.3-129mm (72.9°-2.64°)
F-Stop	f=4.3-129mm (F1.6)
Min. Illumination (AGC Max)	0.6 Lux (F1.6, ICR Off, DSS Off) / 0.02 Lux (DSS Max.) / 0.06 Lux (F1.6, ICR On, DSS Off) / 0.002 Lux (DSS Max.)
S/N Ratio	>50dB
Shutter Speed	1/30(1/25) s - 1/50,000 s
IR LED	-
IR Distance	-
Day / Night	True D/N
White Balance	ATW / AWC / Outdoor / Indoor / Manual
Digital Zoom Ratio	1x - 10x
WDR	WDR
BLC	Off / On (Area Adjustable)

DNR	3DNR
DSS	Off - 30x
AGC	Off - 42dB
Other Function(s)	DIS, PIP, Defog
Privacy Masking	8 zones
Motion Detection	4 zones
Video Output (Main)	HD/3G-SDI / HDMI
Video Output (Service)	Composite
OSD Control	Built-in Controller External Control (A/D Key, RS-485)
OSD Language	English
Housing Material	Aluminium
IP Rating	-
Operating Temperature	-10°C to 50°C (14°F to 122°F)
Max. Power Consumption	12VDC 550mA (Motor Active, 1080P60)
Dimensions (W x H x D mm)	67 x 73 x 121.8
Weight	Approx. 560 g(1.23 lbs)

Ordering Information

KPC-HZA302M (Not all combinations are possible)

Signal Type	Optional Cable	Silk Printing	Color
NTSC	None	KT&C-printed	Ivory
PAL	RS-485	OEM-printed	Gray
	A/D KEY	Non-printed	Silver