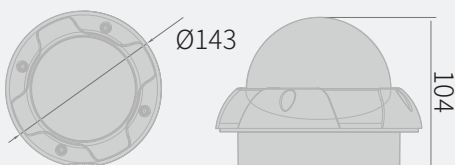


## Analog Camera

# KPC-VNV101U

- 1/3" 960H SONY Double Scan Super HAD CCD II
- 30 IR LEDs up to 40 m (131 ft.)
- Varifocal Lens
- WDR, TDN, 3DNR, DIS, DSS, BLC
- IP66
- 12VDC Max. 400mA



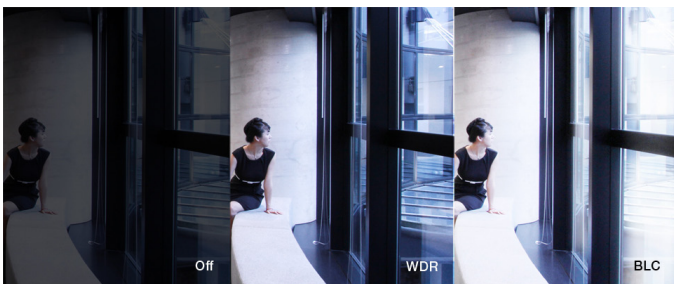
# Features

## KPC-VNV101U

1/3" 960H SONY Double Scan Super HAD CCD II  
30 IR LEDs up to 40 m (131 ft.)  
Varifocal Lens



WDR, TDN, 3DNR, DIS, DSS, BLC  
IP66  
12VDC Max. 400mA

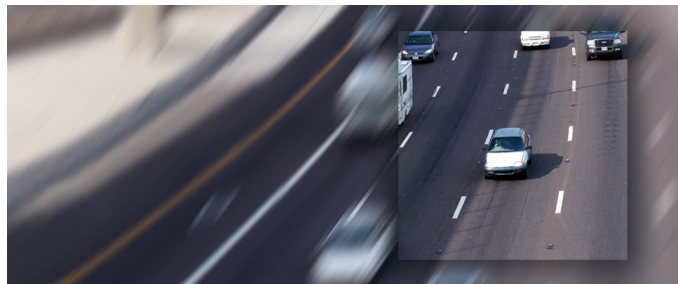


### WDR

WDR technology helps to get detailed information in harsh lighting, by capturing alternate frames using different exposure times. The frame with longer exposure time captures details in darker parts of the scene, while the frame with shorter exposure time captures the brighter areas. The camera combines the optimal portions of these two complementary frames to produce the most detailed image possible.

### TDN

True Day/Night feature can be used for precise color reproduction. With built-in dual filter system, as known as Infrared Cutfilter Removal (ICR) mechanism, the infrared cutfilter can be used at day time, or in bright lighting conditions, to provide enhanced image in full-color. At night time, or in harsh lighting conditions, it will be removed for greater light sensitivity in monochrome mode.

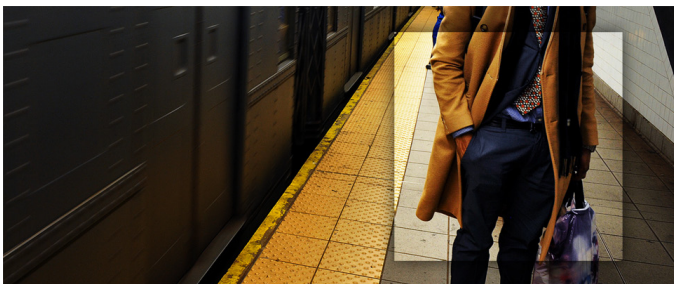


### 3DNR

DNR technology is crucial for surveillance camera. 3DNR works by analyzing the differences between successive frames in order to adjust pixels and improve.

### DIS

Digital Image Stabilization (DIS) uses the motion detection core to stabilize the image from shaking due to external vibrations like oscillation and wind.



### DSS

Digital Slow Shutter (DSS) technology enhances the low light performance of a camera, producing outstanding images in low light conditions. DSS slows the picture frame rate and increases the camera's sensitivity.

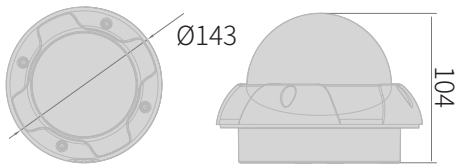
### IP66

Ingress Protection (IP) rating defines protection against solid objects and liquid on a 0-6 and 0-8 scale. IP66 housing means it's dust-tight and protected against strong jet-water.

## Analog Camera

# KPC-VNV101U

### Dimensions



## Specifications

<b>Image Sensor</b>	1/3" 960H SONY Double Scan Super HAD CCD II
<b>Effective Pixels</b>	NTSC: 976(H) x 494(V) PAL: 976(H) x 582(V)
<b>Lens</b>	f=2.8-12mm (2MP) / f=9-22mm
<b>FOV</b>	f=2.8-12mm (109.47° - 38.8°) / f=9-22mm (38° - 16.3°)
<b>F-Stop</b>	f=2.8-12mm (F1.6) / f=9-22mm (F1.6)
<b>Min. Illumination</b>	0 Lux (with IR LED On)
<b>S/N Ratio</b>	>50 dB (3DNR On, AGC Off)
<b>Shutter Speed</b>	1/60(50) s
<b>Flickerless</b>	Auto / On / Off
<b>IR LED</b>	30 LEDs (850 nm)
<b>IR Distance</b>	40 m (131 ft.)
<b>Day/Night</b>	True D/N
<b>White Balance</b>	ATW / Push / User1 / User2 / Manual / Push lock
<b>WDR</b>	WDR
<b>BLC</b>	Off / BLC / HLC
<b>DNR</b>	3DNR
<b>DSS</b>	Off / Auto

<b>AGC</b>	6 - 44.8dB
<b>Other Function(s)</b>	DIS, Defog, Mirror, Brightness, Contrast Sharpness, Hue, Gain
<b>Privacy Masking</b>	15 zones
<b>Motion Detection</b>	4 zones
<b>Digital Zoom Ratio</b>	1x - 255x
<b>OSD Control</b>	Built-in Controller External Control (UTC)
<b>OSD Language</b>	English / Spanish / Russian / Portuguese / German / French / Chinese / Japanese
<b>Service Video Out</b>	Yes
<b>Housing Material</b>	Aluminium (Bubble : Plastic)
<b>IP Rating</b>	IP66
<b>Operating Temperature</b>	-40°C to 60°C (-40°F to 140°F)
<b>Max. Power Consumption</b>	12VDC 400mA 24VAC 5.8W / 12VDC 480mA
<b>Dimensions (W x H x D mm)</b>	Bubble (Ø100) Ø143 X 104
<b>Weight</b>	Approx. 730 g (1.6 lbs)

## Ordering Information

KPC-VNV101U (Not all combinations are possible)

Signal Type	Lens	Voltage	Video Cable	Brackets&Adapters	Silk Printing
NTSC	f=9-22mm	12VDC Only	BNC	Flush Mount	KT&C-printed
PAL	f=2.8-12mm (2MP)	Dual (24VAC/12VDC)	Terminal Block	Surface Mount 34.4T Surface Mount 50.4T	OEM-printed Non-printed

### Accessory for this product

KA-WM100

